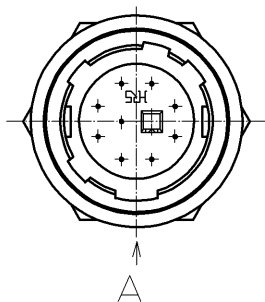
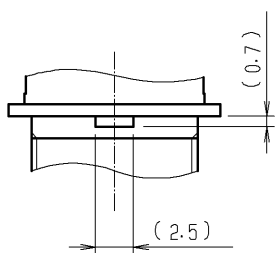
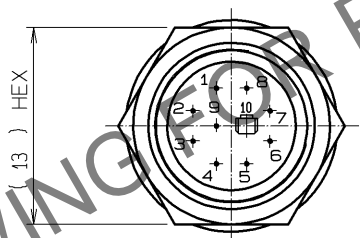
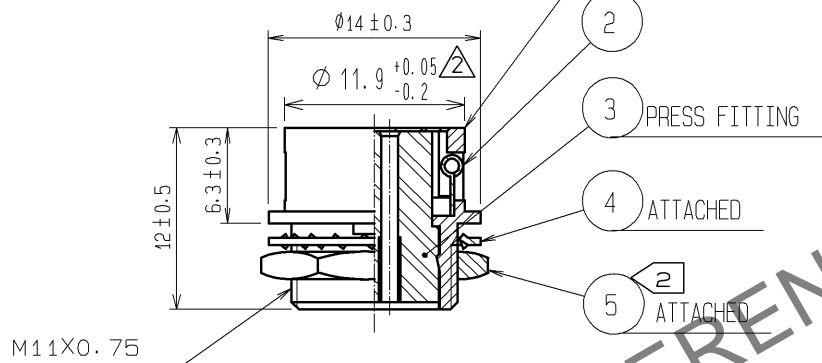
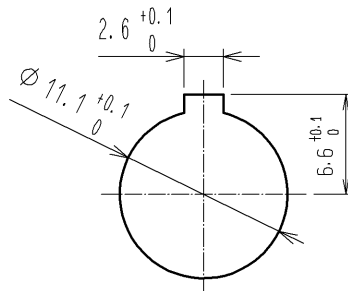


Dec.1.2025 Copyright 2025 HIROSE ELECTRIC CO., LTD. All Rights Reserved.  
In case of consideration for using Automotive equipment / device which demand high reliability, kindly contact our sales window correspondents.

DETAIL OF MOUNTING GUIDE



PANEL CUTOUT  
(t 0.7~2)



- NOTES 1 APPLICABLE CRIMP CONTACT:HR12-SC-212(CL112-0408-9)  
APPLICABLE WIRE:AWG#26 TO #30(COVERED WIRE MAX. OUTSIDE DIA.Ø1)  
APPLICABLE CONTACT REMOVAL TOOL(EXTRACTION TOOL):HR12-SC-TP(CL150-0050-3)  
2 THE RECOMMENDED CLAMP TORQUE OF REF. NO. 5 TO BE 2 N·m.  
LOCTITE 243, HENKEL JAPAN OR EQUIVALENT IS RECOMMENDED TO PREVENT REF. NO. 5 FROM LOOSENING.

3	POLYBUTYLENE TEREPHTHALATE	(BLACK) UL94V-0							
2	STAINLESS STEEL		5	BRASS 1	NICKEL PLATING				
1	ZINC ALLOY	MATTE FINISH NICKEL PLATED	4	PHOSPHOR BRONZE	NICKEL PLATING				
NO.	MATERIAL	FINISH, REMARKS	NO.	MATERIAL	FINISH, REMARKS				
UNITS mm		SCALE 2 : 1	COUNT 2	DESCRIPTION OF REVISIONS DIS-C-003736	DESIGNED HR. SATO	CHECKED HY. KISHI	DATE 14. 11. 25		
HIROSE ELECTRIC CO., LTD.		APPROVED :MO. SATOH	07. 03. 13	DRAWING NO.	EDC4-022885-71				
		CHECKED :EJ. KUNII	07. 03. 12	PART NO.	HR10A-10R-10SC(71)				
		DESIGNED :TO. HORII	07. 03. 09	CODE NO.	CL110-0606-0-71				
		DRAWN :MK. SATO	07. 03. 09						