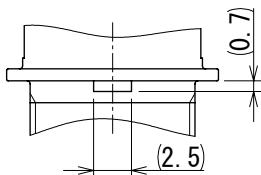
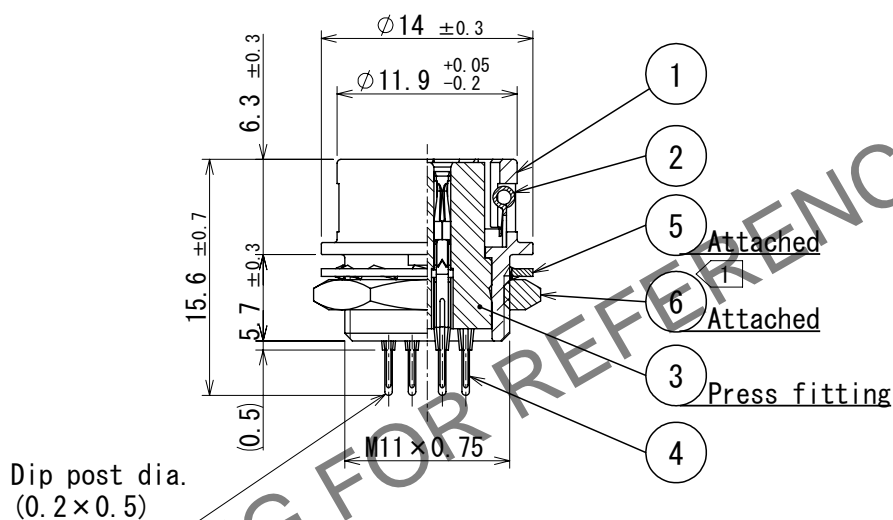
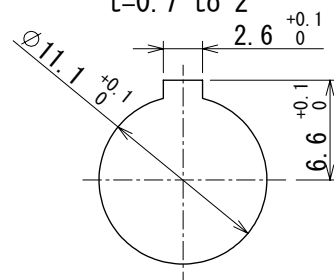


A
Detail of mounting guide

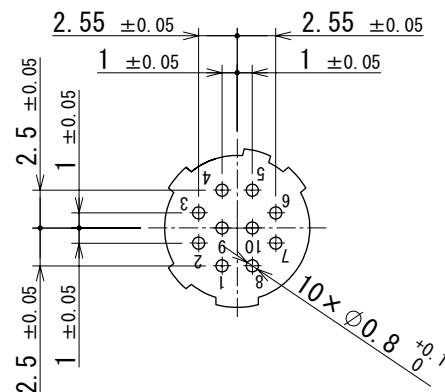


Panel cutout
 $t=0.7$ to 2



PCB Layout

(Indicates the side of the surface to which dip posts are inserted.)



Note 1 The recommended clamp torque of Ref.No. ⑥ to be 2 N · m.
Loctite 243, Henkel Japan or equivalent apply to prevent
Ref.No. ⑥ from loosening.

△ CAD change

3	Polybutylene terephthalate	(Black) UL94V-0	6	Brass	Nickel plating
2	Stainless steel		5	Phosphor bronze	Nickel plating
1	Zinc alloy	Matte finish nickel plated	4	Phosphor bronze	Silver plating 2μm min.
NO.	MATERIAL	FINISH , REMARKS	NO.	MATERIAL	FINISH , REMARKS

UNITS mm		SCALE 2:1	COUNT 2	DESCRIPTION OF REVISIONS DIS-C-00020578	DESIGNED TY. SUZUKI	CHECKED HY. KOBAYASHI	DATE 2025. 08. 12
APPROVED : MR. YOSHIDA 2005. 01. 05				DRAWING NO. EDC-022531-71-71			
CHECKED : MO. SATOH 2005. 01. 05				PART NO. HR10A-10R-10SB (71)			
DESIGNED : YH. YAMADA 2005. 01. 05				CODE NO. CL0110-0413-6-71			
DRAWN : YH. YAMADA 2005. 01. 05				△ 1/1			