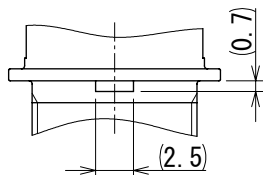
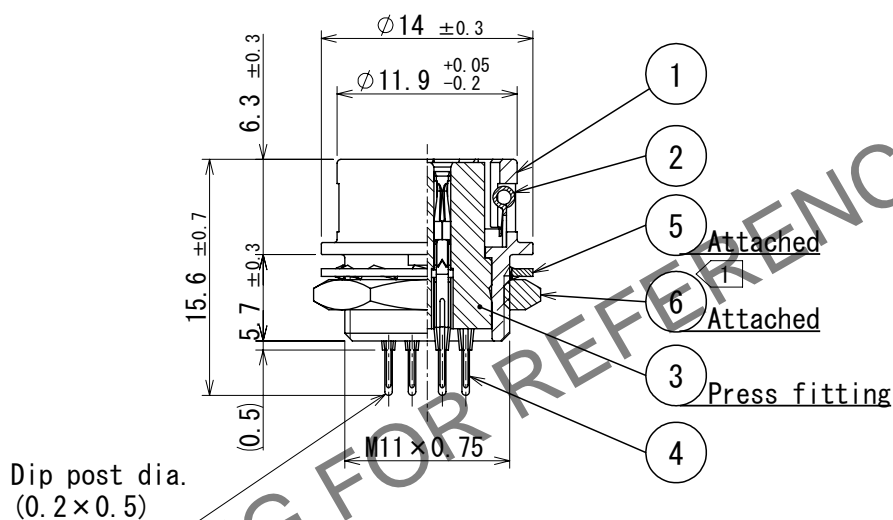
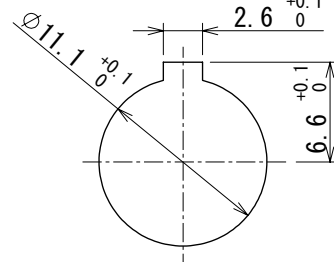


A Detail of mounting guide

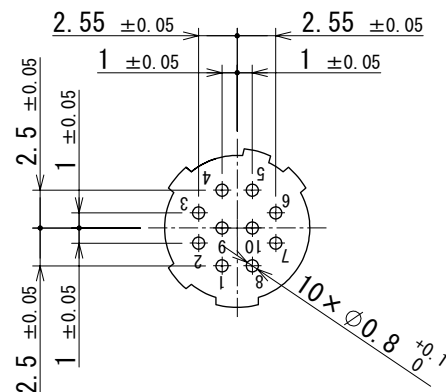


Panel cutout t=0.7 to 2



PCB Layout




(Indicates the side of the surface to which dip posts are inserted.)



△ Note ① The recommended clamp torque of Ref.No. ⑥ to be 2 N · m.
Loctite 243, Henkel Japan or equivalent apply to prevent
Ref.No. ⑥ from loosening.

△ CAD change

3	Polybutylene terephthalate	(Black) UL94V-0	6	Brass	Nickel plating
2	Stainless steel		5	Phosphor bronze	Nickel plating
1	Zinc alloy	Matte finish nickel plated	4	Phosphor bronze	Silver plating 2μm min.
NO.	MATERIAL	FINISH , REMARKS	NO.	MATERIAL	FINISH , REMARKS

UNITS mm		SCALE 2:1	COUNT	DESCRIPTION OF REVISIONS	DESIGNED	CHECKED	DATE
			 2	DIS-C-00020578	TY. SUZUKI	HY. KOBAYASHI	2025. 08. 12
 HIROSE ELECTRIC CO., LTD.			APPROVED : MR. YOSHIDA	2005. 01. 05	DRAWING NO. EDC-022531-71-71		
			CHECKED : MO. SATOH	2005. 01. 05	PART NO. HR10A-10R-10SB (71)		
			DESIGNED : YH. YAMADA	2005. 01. 05	CODE NO. CL0110-0413-6-71		
			DRAWN : YH. YAMADA	2005. 01. 05	