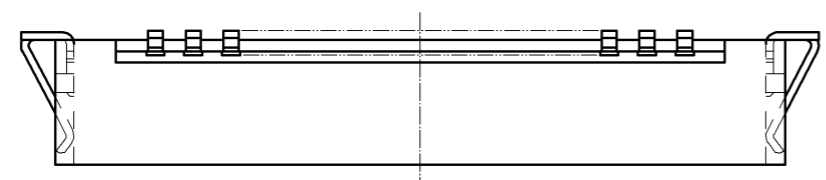
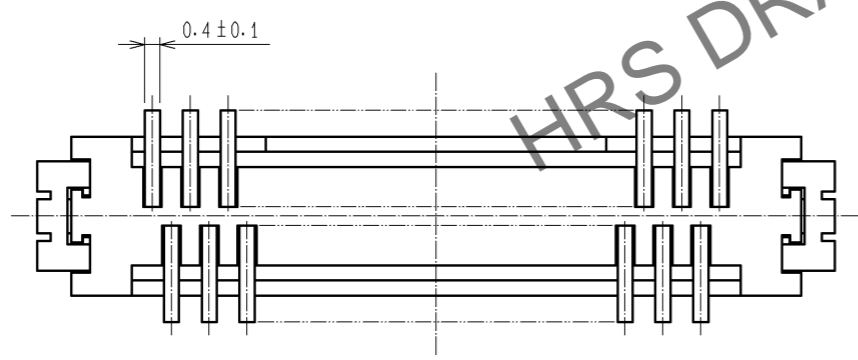
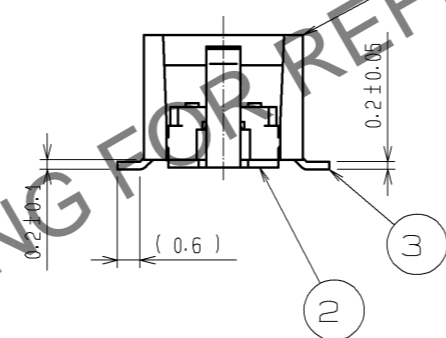
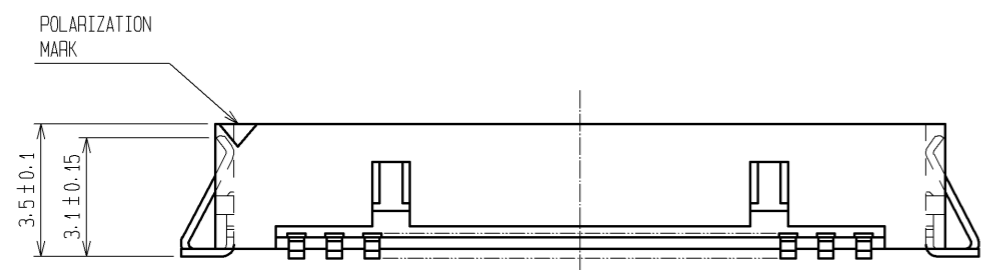
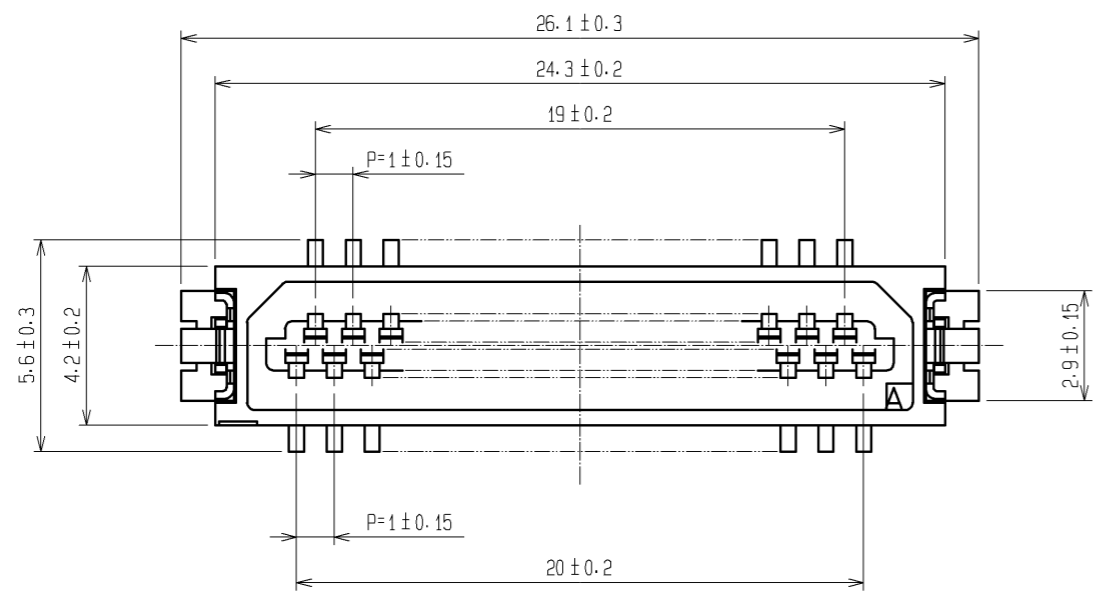
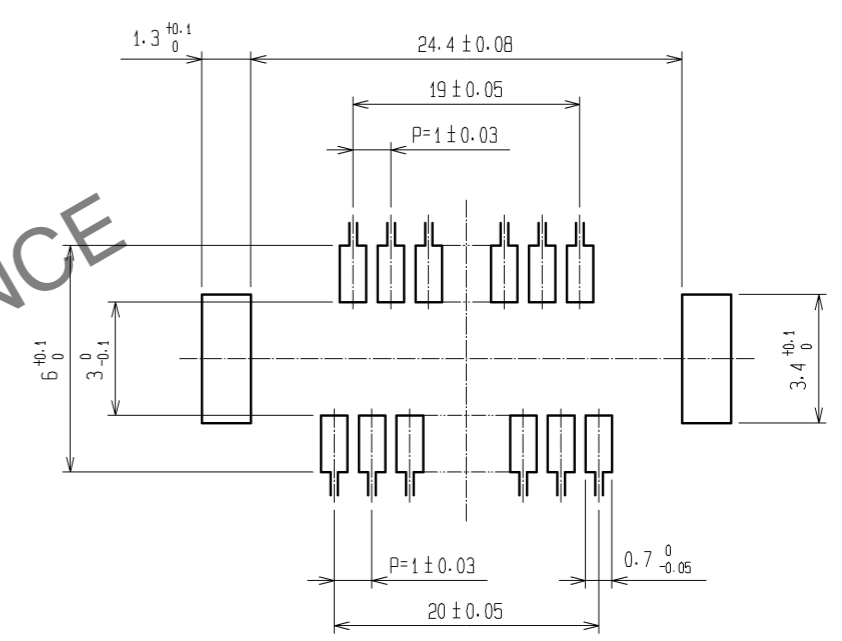


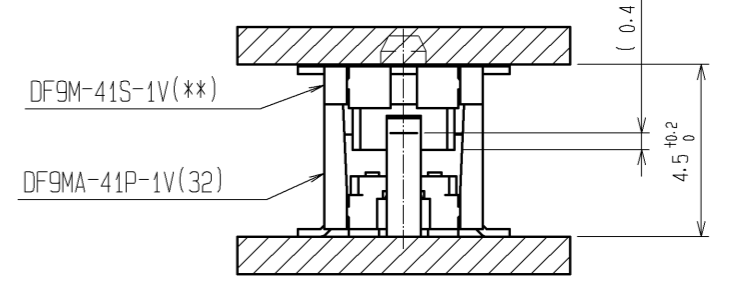
Sep.1.2025 Copyright 2025 HIROSE ELECTRIC CO., LTD. All Rights Reserved.
In case of consideration for using Automotive equipment / device which demand high reliability, kindly contact our sales window correspondents.



RECOMMENDED PATTERN



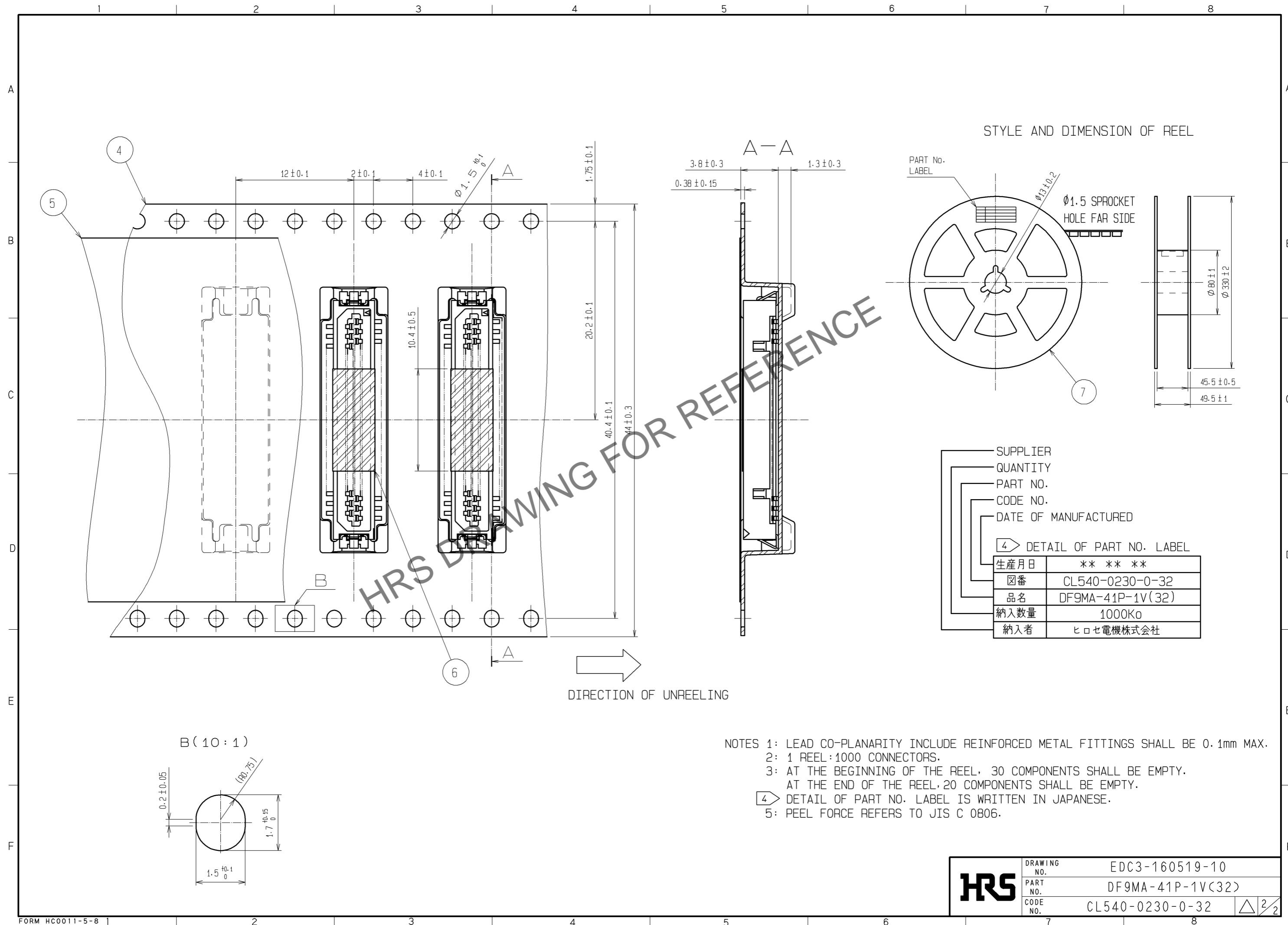
MATED CONNECTORS



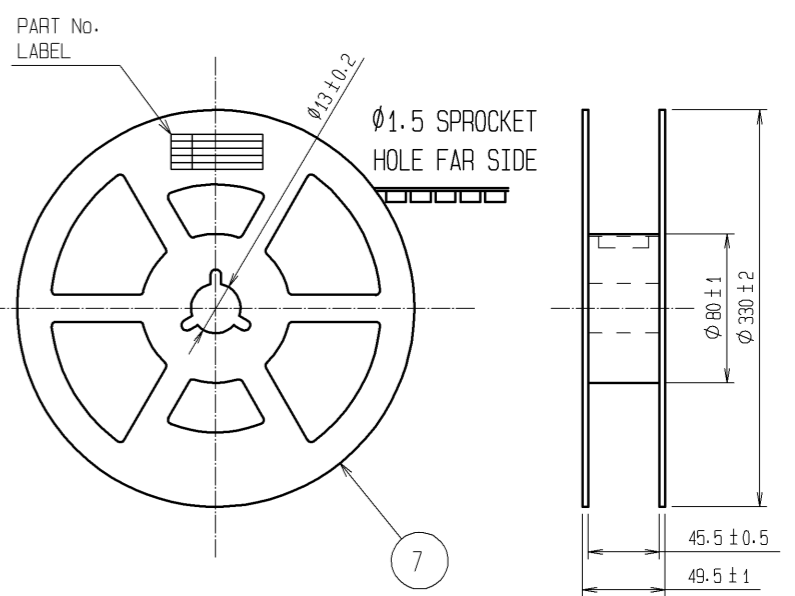
3	PHOSPHOR BRONZE	TIN PLATED (HOT-DIP) 1#m min	7	PS	PLASTIC REEL-BLACK
2	PHOSPHOR BRONZE	TIN PLATED (REFLOW FINISHED)1#m min.	6	POLYIMIDE	BROWN(HEAT-RESISTANT TAPE)
1	POLYAMIDE	BEIGE, UL94V-0	5	POLYESTER	CLEAR(COVER TAPE)
			4	PS	CLEAR(EMBOSSED CARRIER TAPE)
NO.	MATERIAL	FINISH . REMARKS	NO.	MATERIAL	FINISH . REMARKS

UNITS mm		SCALE 5 : 1	COUNT 	DESCRIPTION OF REVISIONS	DESIGNED	CHECKED	DATE
HRS HIROSE ELECTRIC CO., LTD.				APPROVED : KH. IKEDA 10.11.30	DRAWING NO. EDC3-160519-10		
				CHECKED : TS. MIYAZAKI 10.11.30	PART NO. DF9MA-41P-1V(32)		
				DESIGNED : YN. SAKAMOTO 10.11.30	CODE NO. CL540-0230-0-32		
				DRAWN : YN. SAKAMOTO 10.11.30	1/2		

Sep.1.2025 Copyright 2025 HIROSE ELECTRIC CO., LTD. All Rights Reserved.
In case of consideration for using Automotive equipment / device which demand high reliability, kindly contact our sales window correspondents.



STYLE AND DIMENSION OF REEL

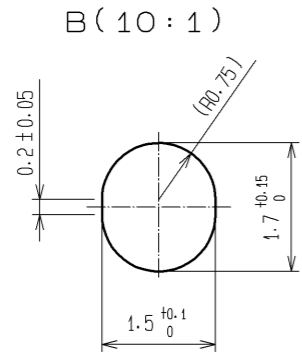


SUPPLIER
QUANTITY
PART NO.
CODE NO.
DATE OF MANUFACTURED
4 → DETAIL OF PART NO. LABEL

生産月日	** ** *
図番	CL540-0230-0-32
品名	DF9MA-41P-1V(32)
納入数量	1000Ko
納入者	ヒロセ電機株式会社

➔ DIRECTION OF UNREELING

- NOTES 1: LEAD CO-PLANARITY INCLUDE REINFORCED METAL FITTINGS SHALL BE 0.1mm MAX.
2: 1 REEL:1000 CONNECTORS.
3: AT THE BEGINNING OF THE REEL, 30 COMPONENTS SHALL BE EMPTY.
AT THE END OF THE REEL, 20 COMPONENTS SHALL BE EMPTY.
4 → DETAIL OF PART NO. LABEL IS WRITTEN IN JAPANESE.
5: PEEL FORCE REFERS TO JIS C 0806.



HRS	DRAWING NO.	EDC3-160519-10
	PART NO.	DF9MA-41P-1V(32)
	CODE NO.	CL540-0230-0-32
	NO.	△ 2/2