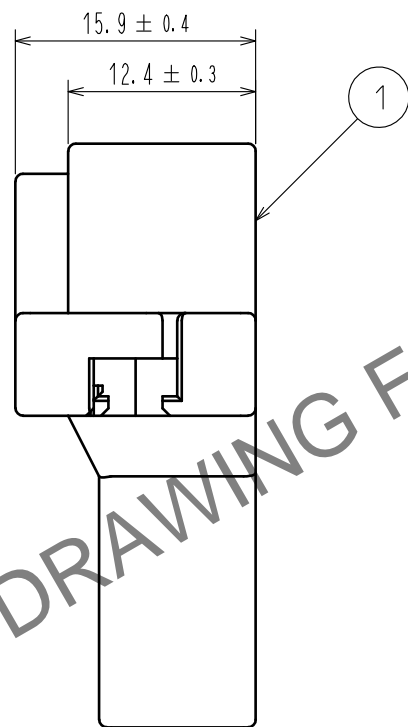
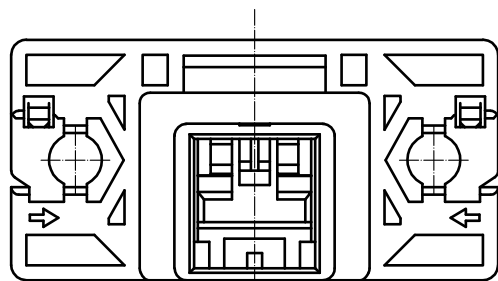
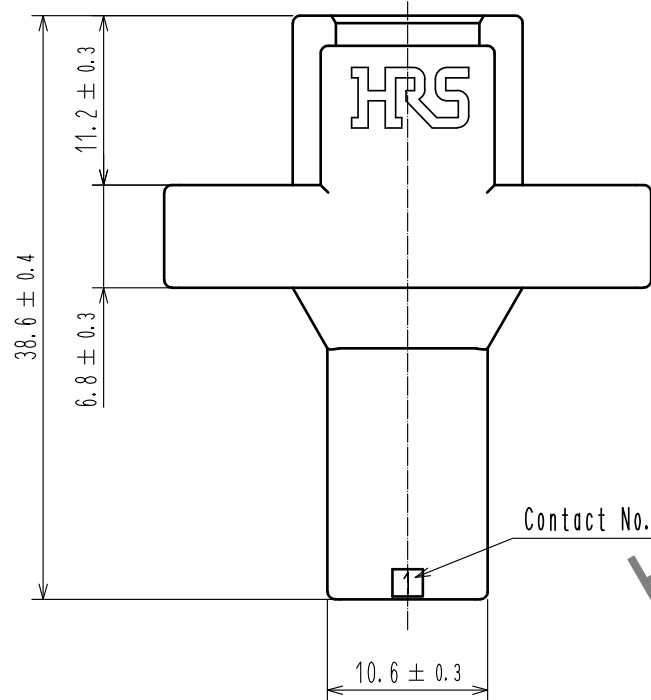
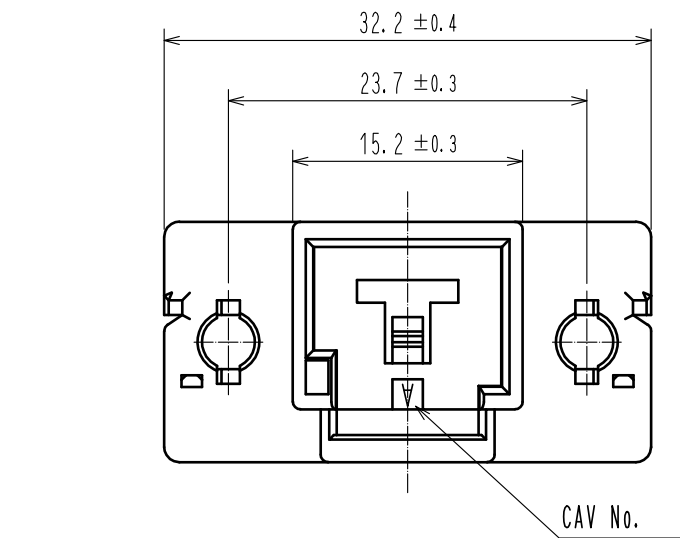
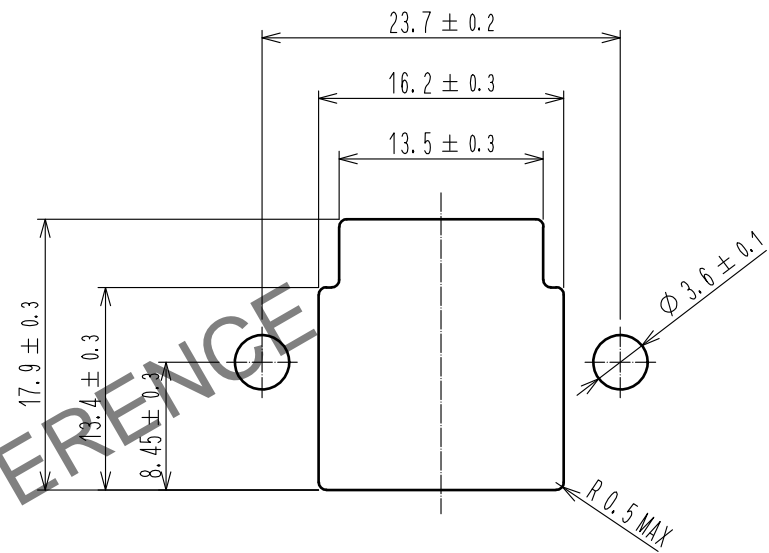


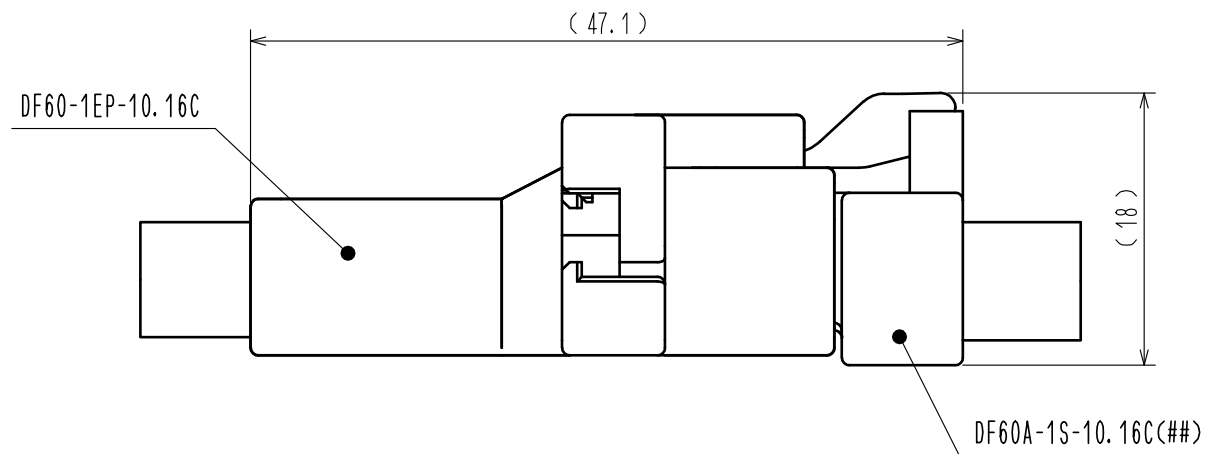
Jul.1.2025 Copyright 2025 HIROSE ELECTRIC CO., LTD. All Rights Reserved.
In case of consideration for using Automotive equipment / device which demand high reliability, kindly contact our sales window correspondents.




Recommended panel cut out dimension



Mating figure



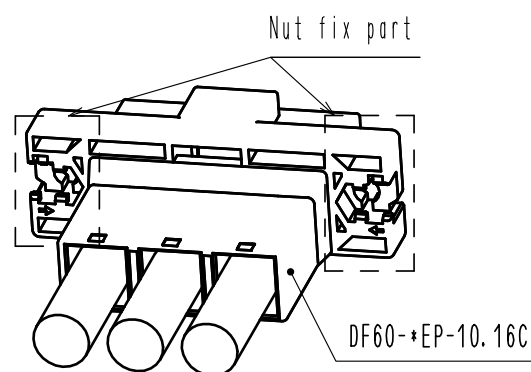
Note 1. Per pack : 100 pieces.

				1	PBT		BLACK, UL94V-0			
NO.	MATERIAL		FINISH , REMARKS		NO.	MATERIAL		FINISH , REMARKS		
UNITS mm		SCALE 2 : 1		COUNT	DESCRIPTION OF REVISIONS		DESIGNED	CHECKED	DATE	
				APPROVED : SJ. OKAMURA		20210727	DRAWING NO.		EDC-360512-00-00	
				CHECKED : SZ. ONO		20210727	PART NO.		DF60-1EP-10.16C	
				DESIGNED : SN. MIWA		20210727	CODE NO.		CL0680-3050-2-00	
 HIROSE ELECTRIC CO., LTD.		DRAWN : NK. OOSHIMA		20210727						

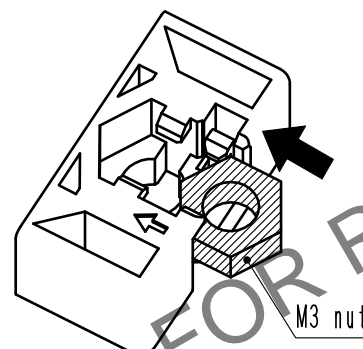
Jul.1.2025 Copyright 2025 HIROSE ELECTRIC CO., LTD. All Rights Reserved.
In case of consideration for using Automotive equipment / device which demand high reliability, kindly contact our sales window correspondents.

DF60 In-Line type recommended panel mounting manual (When nuts uses)

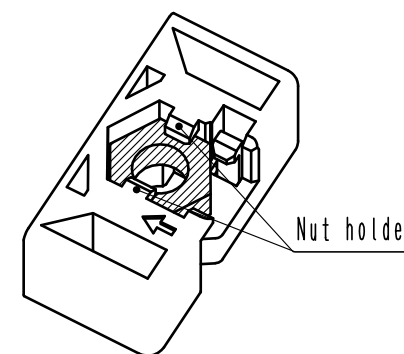
Nut installation process



1. Slide a nut (Size:M3) to nut fix part.

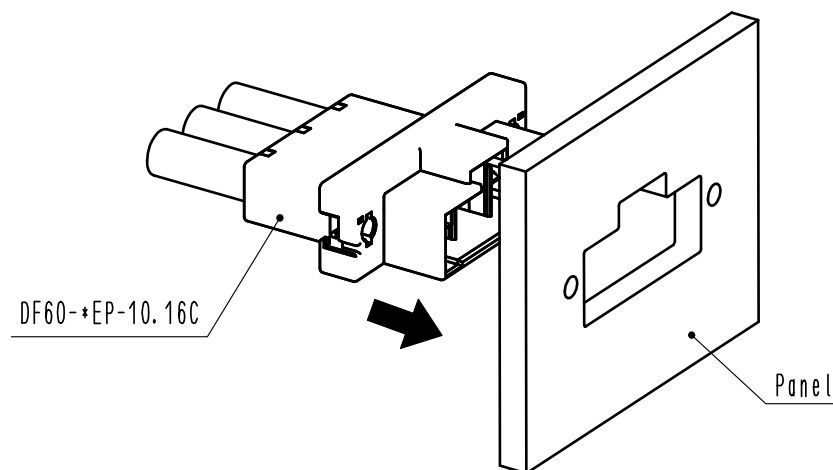


2. Press down the nut until it clicks, then this sound means the nut has inserted into nut holder.

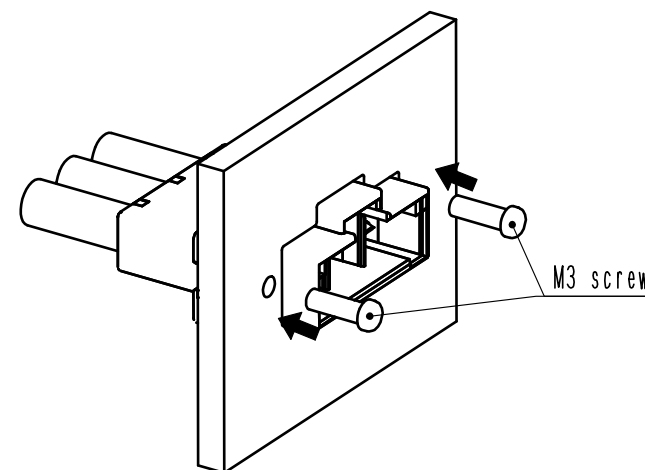


Panel mounting process

1. Insert connector into panel cut out part.



2. Tighten a screw (Size:M3) to fix with panel.
recommended torque : less than 49N・cm



HRS

DRAWING NO.	EDC-360512-00-00
PART NO.	DF60-1EP-10.16C
CODE NO.	CL0680-3050-2-00

2/2