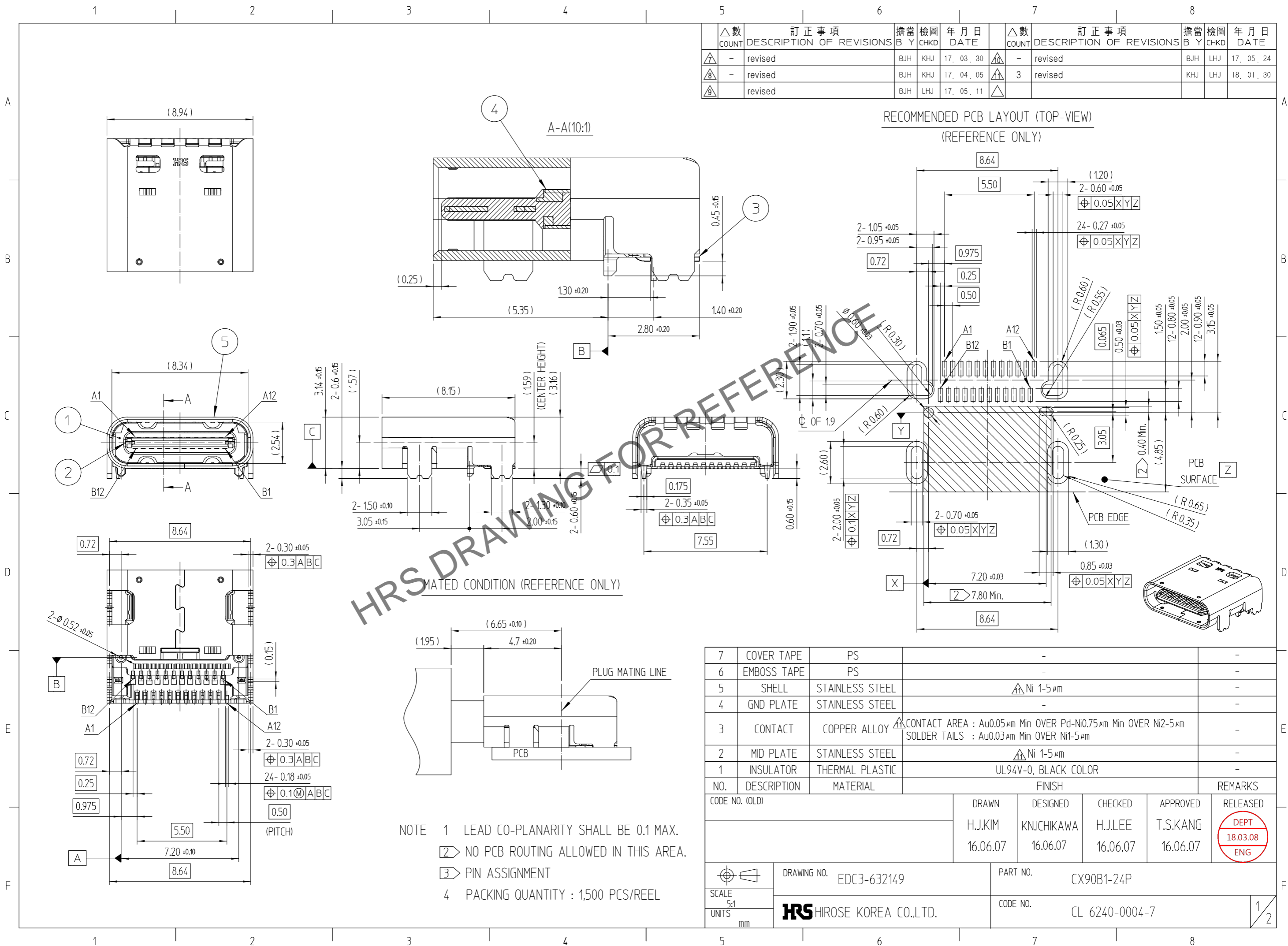
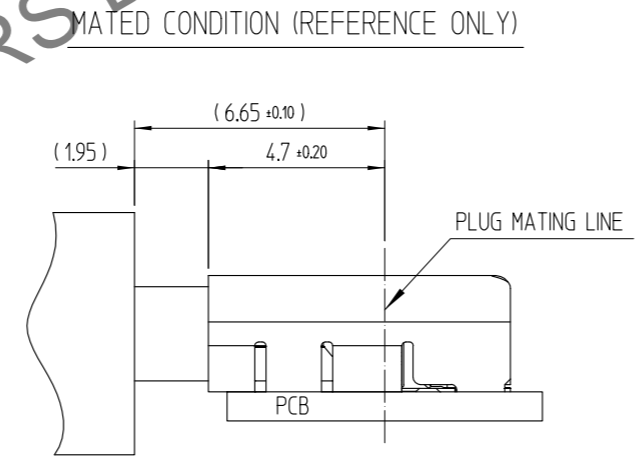


Jun.1.2026 Copyright 2026 HIROSE ELECTRIC CO., LTD. All Rights Reserved.  
 In case of consideration for using Automotive equipment / device which demand high reliability, kindly contact our sales window correspondents.



△數 COUNT	訂正事項 DESCRIPTION OF REVISIONS	擔當 B	檢圖 CHKD	年月日 DATE	△數 COUNT	訂正事項 DESCRIPTION OF REVISIONS	擔當 B	檢圖 CHKD	年月日 DATE
△7	- revised	BJH	KHJ	17. 03. 30	△7	- revised	BJH	LHJ	17. 05. 24
△8	- revised	BJH	KHJ	17. 04. 05	△8	3 revised	KHJ	LHJ	18. 01. 30
△9	- revised	BJH	LHJ	17. 05. 11	△9				

HRS DRAWING FOR REFERENCE



- NOTE
- 1 LEAD CO-PLANARITY SHALL BE 0.1 MAX.
  - 2 NO PCB ROUTING ALLOWED IN THIS AREA.
  - 3 PIN ASSIGNMENT
  - 4 PACKING QUANTITY : 1,500 PCS/REEL

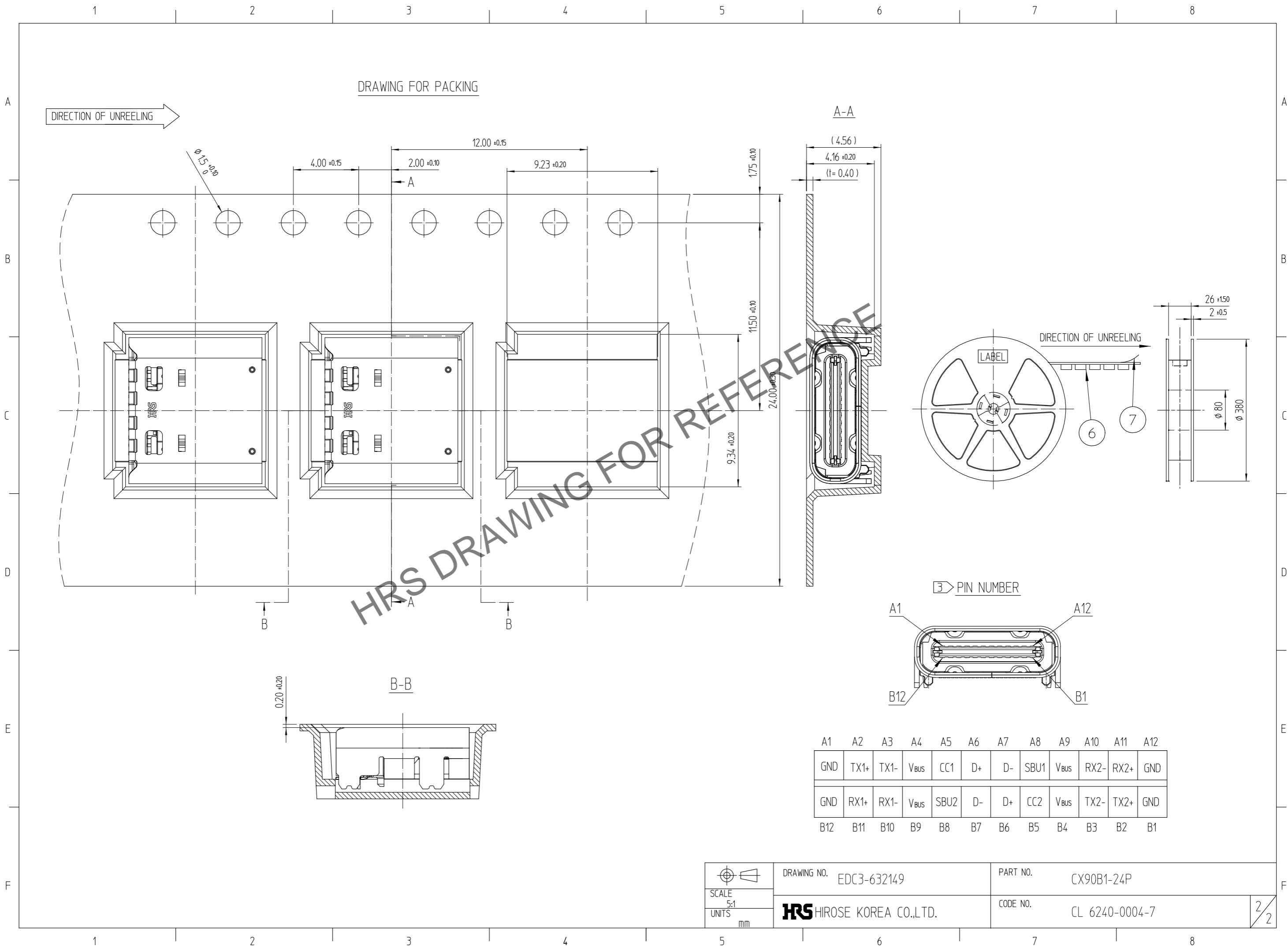
NO.	DESCRIPTION	MATERIAL	FINISH	REMARKS
7	COVER TAPE	PS	-	-
6	EMBOSS TAPE	PS	-	-
5	SHELL	STAINLESS STEEL	△Ni 1-5μm	-
4	GND PLATE	STAINLESS STEEL	-	-
3	CONTACT	COPPER ALLOY	△CONTACT AREA : Au0.05μm Min OVER Pd-Ni0.75μm Min OVER Ni2-5μm SOLDER TAILS : Au0.03μm Min OVER Ni1-5μm	-
2	MID PLATE	STAINLESS STEEL	△Ni 1-5μm	-
1	INSULATOR	THERMAL PLASTIC	UL94V-0, BLACK COLOR	-

CODE NO. (OLD)	DRAWN	DESIGNED	CHECKED	APPROVED	RELEASED
	H.J.KIM	KNJICHIKAWA	H.J.LEE	T.S.KANG	DEPT 18.03.08 ENG
	16.06.07	16.06.07	16.06.07	16.06.07	

DRAWING NO.	PART NO.	CODE NO.
EDC3-632149	CX90B1-24P	CL 6240-0004-7

Jun.1.2026 Copyright 2026 HIROSE ELECTRIC CO., LTD. All Rights Reserved.  
 In case of consideration for using Automotive equipment / device which demand high reliability, kindly contact our sales window correspondents.



 SCALE 5:1 UNITS mm	DRAWING NO.	EDC3-632149	PART NO.	CX90B1-24P
	HIROSE KOREA CO.,LTD.		CODE NO.	CL 6240-0004-7
				2/2