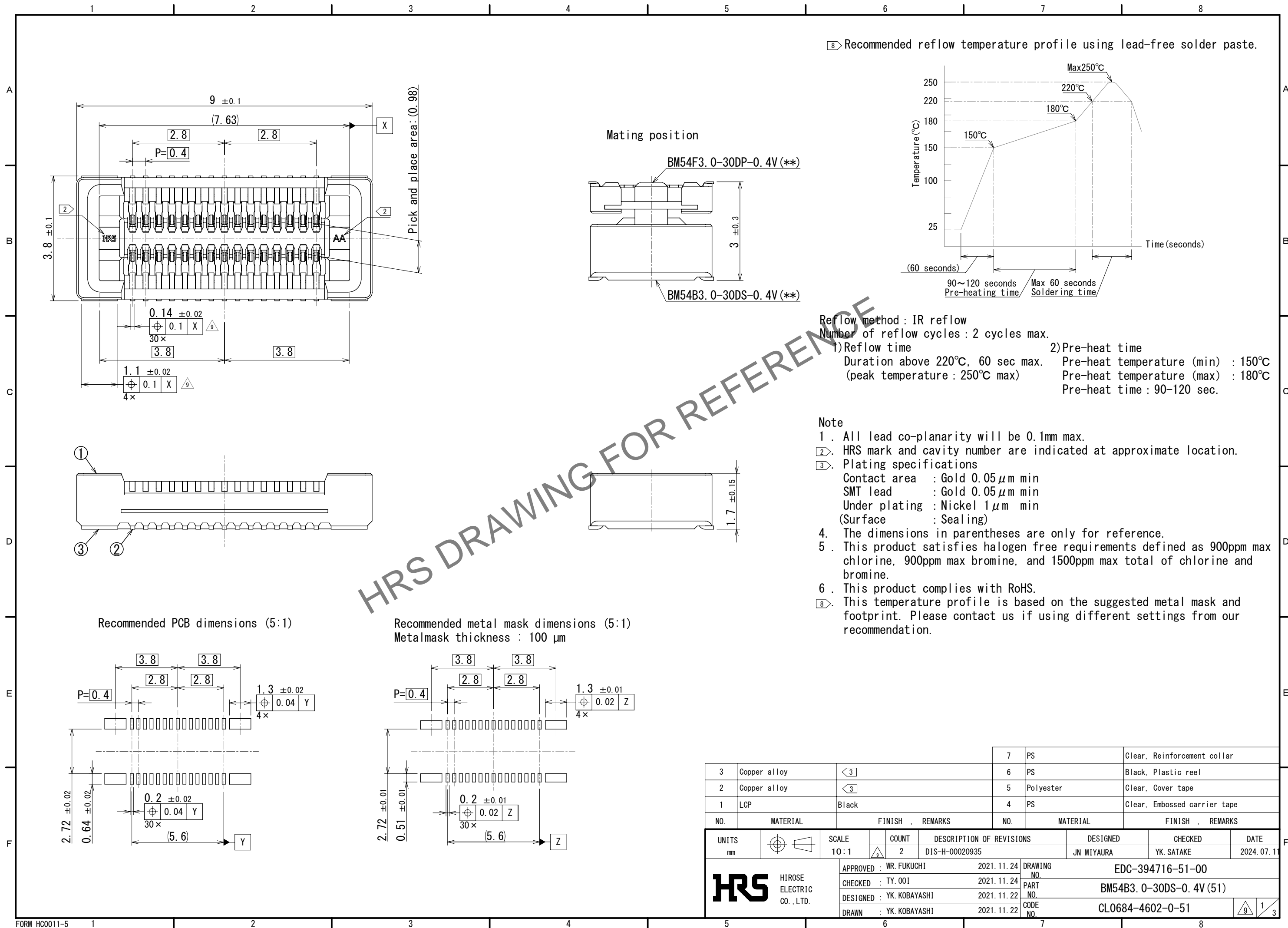
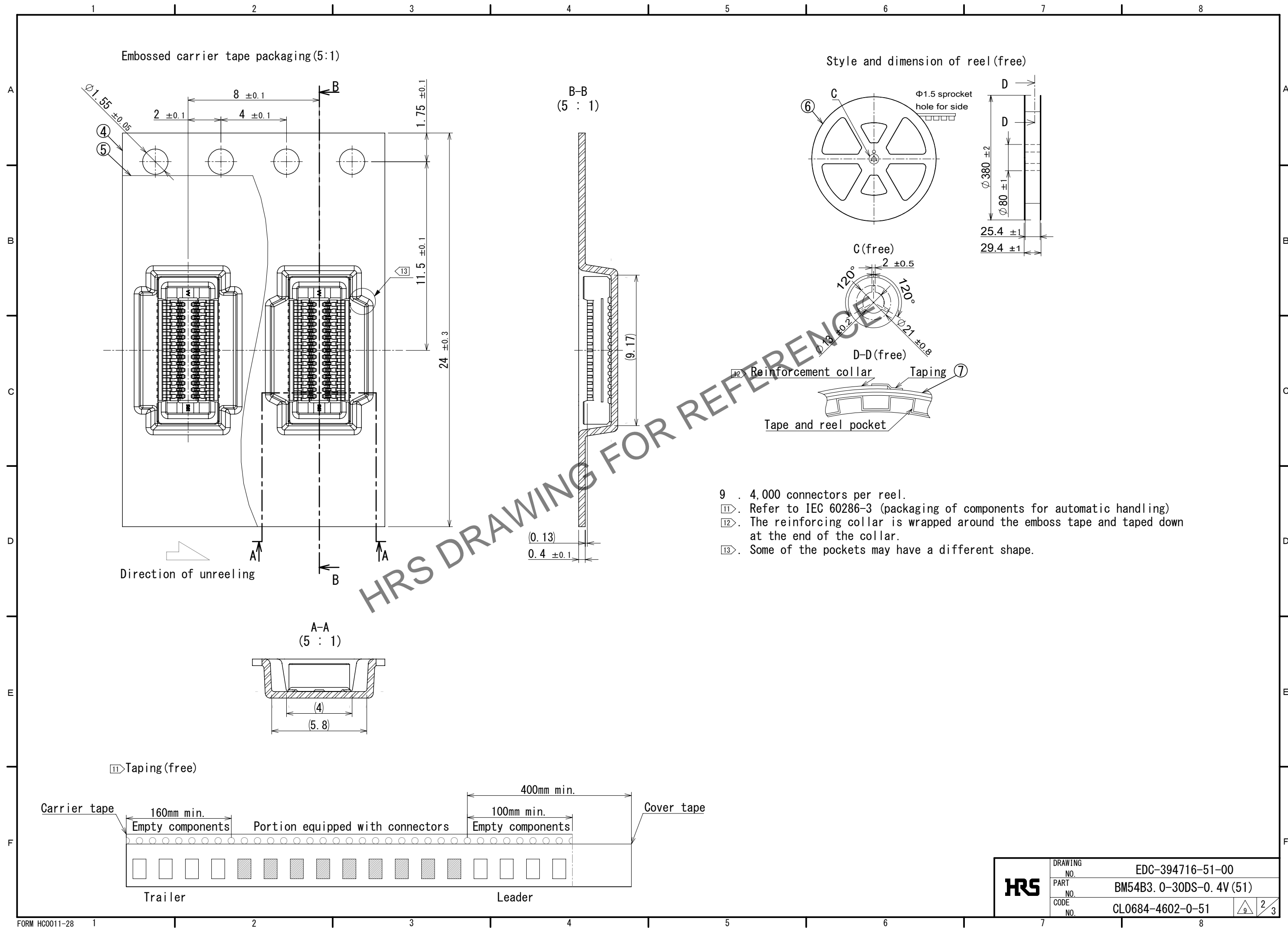


Apr.1.2025 Copyright 2025 HIROSE ELECTRIC CO., LTD. All Rights Reserved.
In case of consideration for using Automotive equipment / device which demand high reliability, kindly contact our sales window correspondents.



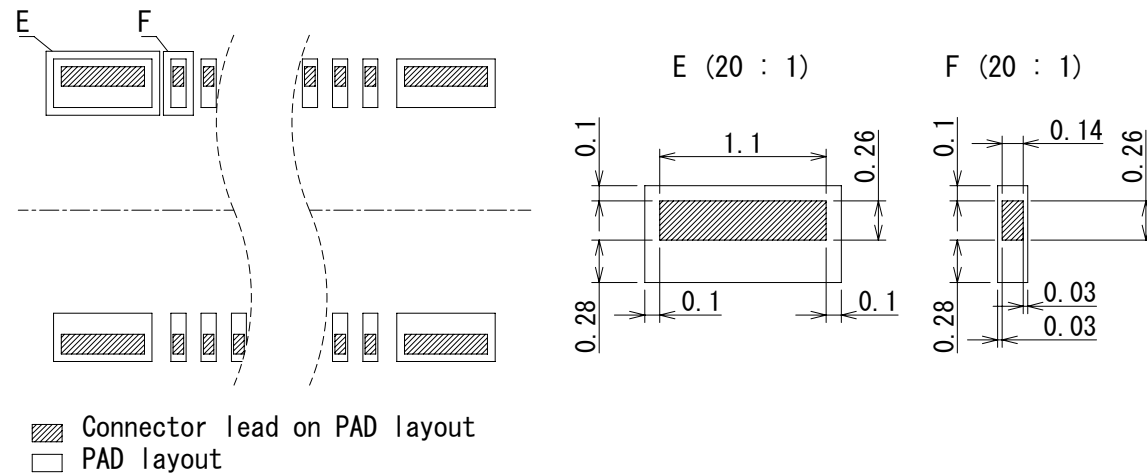
Apr.1.2025 Copyright 2025 HIROSE ELECTRIC CO., LTD. All Rights Reserved.
In case of consideration for using Automotive equipment / device which demand high reliability, kindly contact our sales window correspondents.



Apr.1.2025 Copyright 2025 HIROSE ELECTRIC CO., LTD. All Rights Reserved.
In case of consideration for using Automotive equipment / device which demand high reliability, kindly contact our sales window correspondents.

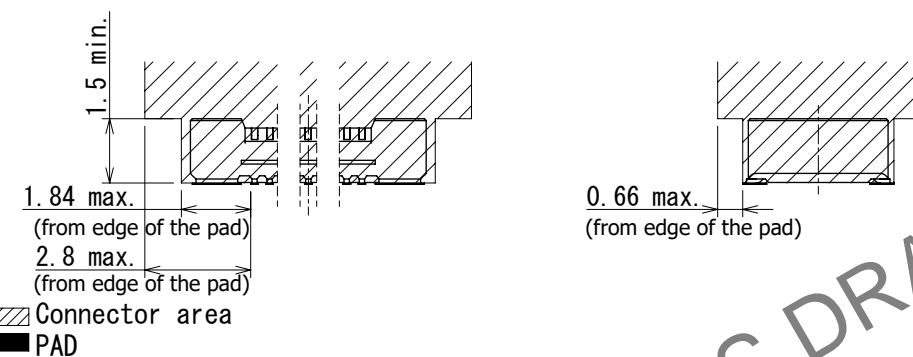
14. Please refer to the product guideline
for detail of connector handling.

The position between the connector and PAD



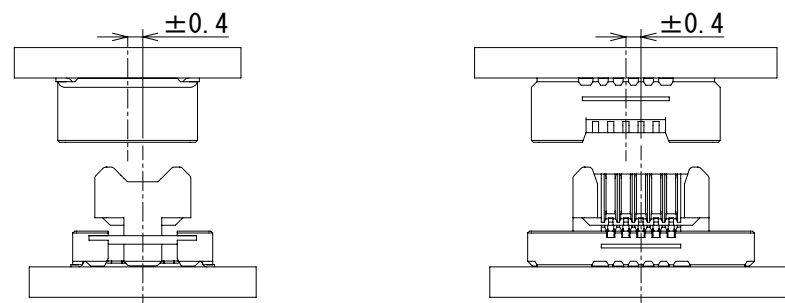
Connector area

(1) is connector area or floating area, if other parts enter this area,
it is possible to affect floating performance.



Mating method

(1) The alignment dimension is ± 0.4 mm in the X and Y directions.
After the start of mating, follow the alignment and mate perpendicularly to the board
without applying an overloading to the connector



Misalignment Allowance in Mated Condition (Floating Range)

(1) Because of floating design, this connector has a ± 0.4 mm board misalignment tolerance
in the X and Y directions when mated. However, it is not suitable for absorption
when the range of misalignment constantly changes due to vibration, etc.
The number of repetitions of floating movable operations is stipulated to be no more than 10 times

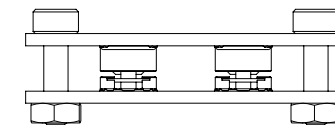


Securing PCBs

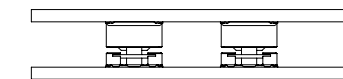
(1) This connector can absorb misalignment between PCBs, but not vibration.
If you support PCBs only with the connectors without taking any fixing measures,
the load on the connectors will be excessive and may cause broken or contact failure.
Be sure to secure PCBs except for the connectors as shown below to prevent the board
from moving. This connector connects the board to the board.
When using mounting to FPC, fasten the board and FPC to the case separately



Fixing PCBs with a spacer or case

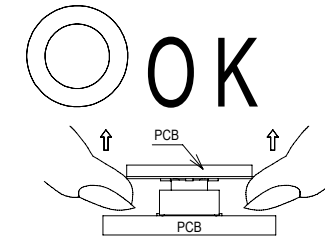
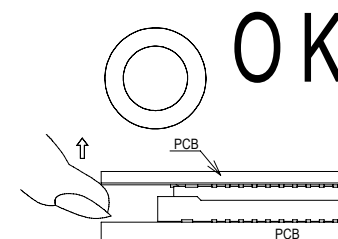


Do not use the product
without fixing PCBs together.



Un-mating method

(1) Un-mate the connectors parallel to each other.



(2) When un-mating the connector, pull it out in parallel.
If it is un-mated in an inclined position, connector may deform.

