

# Customer Information Sheet

DRAWING No.: M30-600XX46

SHEET 2 OF 2

IF IN DOUBT - ASK

©

NOT TO SCALE

THIRD ANGLE PROJECTION

ALL DIMENSIONS IN mm

**SPECIFICATIONS:**

**MATERIAL:**  
 MOULDING = PA6T/66 NATURAL,  
 UL94V-0  
 CONTACT = BRASS  
 RETAINER = PHOSPHOR BRONZE  
**FINISH:**  
 CONTACT = 2.03µ - 2.54µ 100% TIN  
 OVER 0.76µ NICKEL  
 RETAINER = 2.03µ - 2.54µ 100% TIN  
 OVER 0.76µ NICKEL

**ELECTRICAL:**

CURRENT RATING = 1A AC/DC  
 VOLTAGE RATING = 150V AC/DC  
 CONTACT RESISTANCE = 30mΩ MAX  
 INSULATION RESISTANCE = 500 MΩ MIN  
 DIELECTRIC WITHSTANDING VOLTAGE = 500V AC  
 FOR ONE MINUTE

**ENVIRONMENTAL:**

TEMPERATURE RANGE = -25° TO +85°C

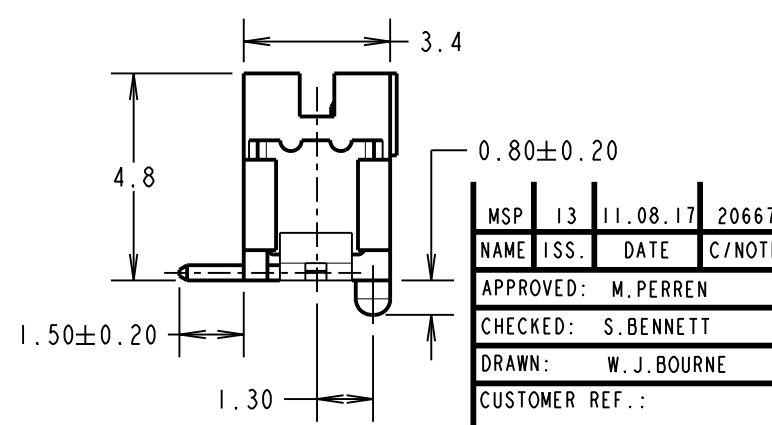
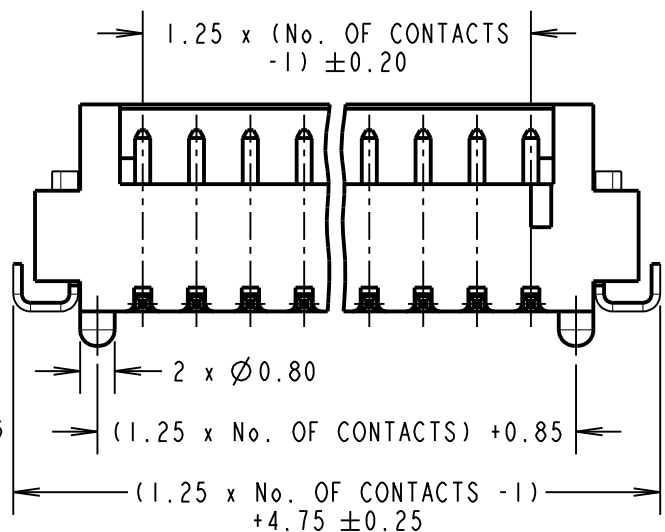
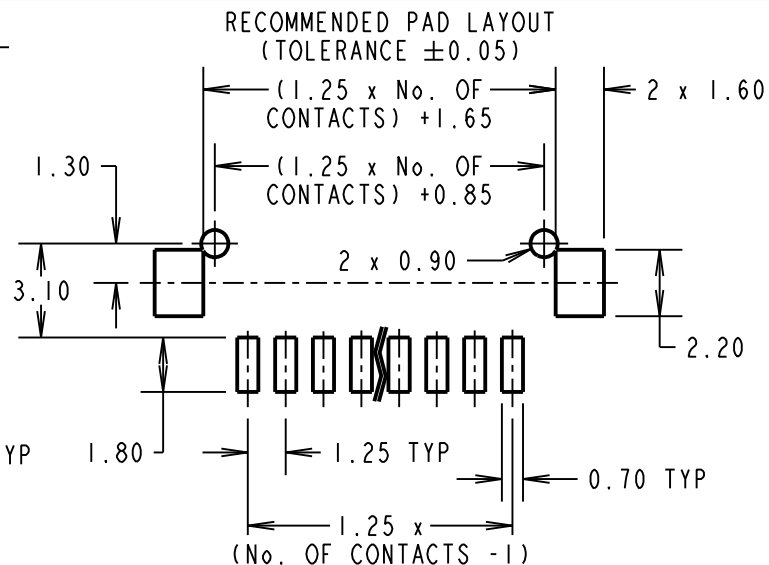
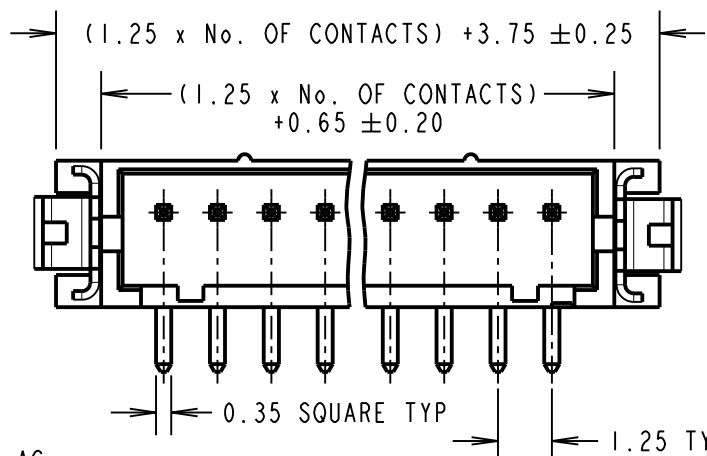
**PACKING: TUBE**

FOR COMPLETE SPECIFICATION,  
 SEE COMPONENT SPECIFICATION  
 C025XX (LATEST ISSUE)

ORDER CODE:  
**M30-600XX46**  
 No. OF CONTACTS  
 02 TO 15  
 FINISH:  
 46 = 100% TIN

**NOTES:**

- MATES WITH M30-1050046 AND M30-1060046 CRIMP CONTACTS, WITH M30-110XX00 CRIMP MOULDING.
- COPLANARITY OF CONTACTS AND RETAINER TO BE 0.1mm MAX.



MSP	13	11.08.17	20667
NAME	ISS.	DATE	C/NOTE
APPROVED: M. PERREN			
CHECKED: S. BENNETT			
DRAWN: W. J. BOURNE			
CUSTOMER REF.:			
ASSEMBLY DRG:			

**HARWIN**

www.harwin.com  
 technical@harwin.com

THIS DRAWING AND ANY INFORMATION OR DESCRIPTIVE MATTER SET OUT HEREON ARE CONFIDENTIAL AND COPYRIGHT PROPERTY OF THE HARWIN GROUP AND MUST NOT BE DISCLOSED, LOANED, COPIED OR USED FOR MANUFACTURING, TENDERING OR FOR ANY OTHER PURPOSE WITHOUT THEIR WRITTEN PERMISSION.

**TOLERANCES**  
 X. = ± 1mm  
 X.X = ± 0.50mm  
 X.XX = ± 0.10mm  
 X.XXX = ± 0.01mm  
 ANGLES = ± 5°  
 UNLESS STATED

**MATERIAL:**

SEE ABOVE

**FINISH:**

SEE ABOVE

**S/AREA:**

mm<sup>2</sup>

**TITLE:**

1.25mm PITCH SIL  
 SMT BOARD MOUNT CONNECTOR

**DRAWING NUMBER:**

**M30-600XX46**

SHT  
 2 OF 2