

SMA Female Bulkhead Connector Solder Attachment
For RG316, RG174, RG188, .235 inch D Hole



LCCN45894

Configuration

- SMA Female Connector
- 50 Ohms
- Straight Body Geometry
- RG316, RG174, RG188 Interface Type
- Solder/Solder Attachment
- Bulkhead

Applications

- General Purpose Test
- Rack and Panel Mount Applications
- Custom Cable Assemblies

Description

L-com's LCCN45894 , SMA, Standard, Connector is part of our full line of RF components available for same-day shipping. This SMA bulkhead connector allows designers to create external connections on their product enclosures, and can be used in a variety of other rack mount and panel mount applications. Our SMA female bulkhead connector LCCN45894 datasheet specifications and drawing with dimensions are shown below in this PDF. L-com's broad catalog of RF, microwave and millimeter wave connectors allows designers to configure and customize their signal connections however they like. Whether the need is to provide an I/O for a board design, or simply create a custom cable assembly configuration, L-com has the right connector for the job. L-com can also expertly build your custom cable assemblies for you and ship same-day.

Mechanical Specifications

Size

Length	0.88 in [22.40 mm]
Width	0.31 in [7.92 mm]
Weight	0.01 lbs [3.63 g]

Material Specifications

Description	Material	Plating
Body	Brass	Nickel

Click the following link (or enter part number in "SEARCH" on website) to obtain additional part information including price, inventory and certifications:
[SMA Female Bulkhead Connector Solder Attachment For RG316, RG174, RG188, .235 inch D Hole LCCN45894](#)

SMA Female Bulkhead Connector Solder Attachment
For RG316, RG174, RG188, .235 inch D Hole



LCCN45894

Environmental Specifications

Compliance Certifications (see [product page](#) for current document)

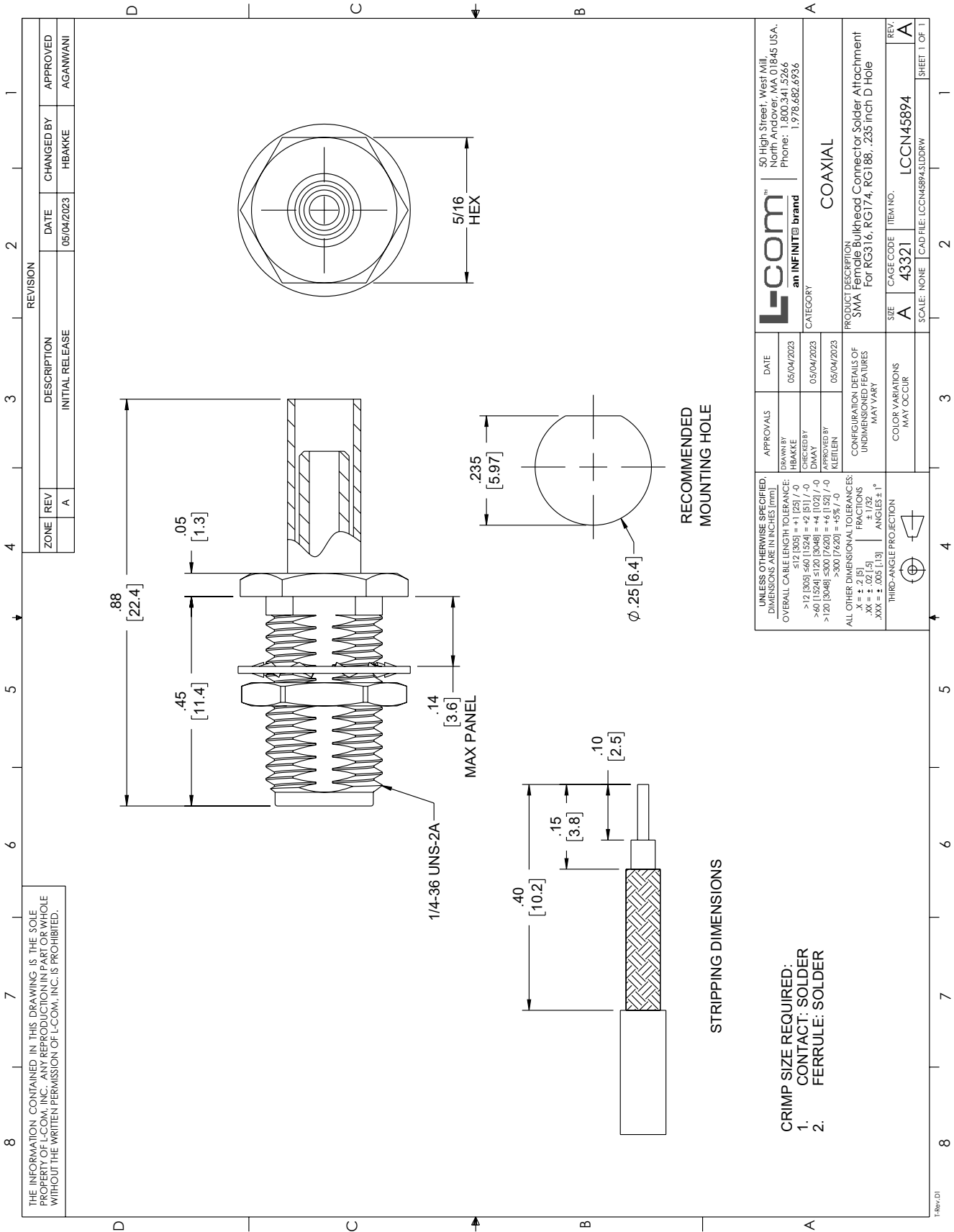
Plotted and Other Data

SMA Female Bulkhead Connector Solder Attachment For RG316, RG174, RG188, .235 inch D Hole from L-com has same day shipment for domestic and International orders. Our portfolio includes coaxial cable assemblies, connectors, adapters and custom products as well as lightning and surge protectors, NEMA rated enclosures, and an RF product line which includes antennas, amplifiers, passive, and active components. Click the following link (or enter part number in "SEARCH" on website) to obtain additional part information including price, inventory and certifications: SMA Female Bulkhead Connector Solder Attachment For RG316, RG174, RG188, .235 inch D Hole LCCN45894

URL: <https://www.l-com.com/sma-female-bulkhead-connector-solder-attachment-rg316-rg174-rg188-.235-inch-d-hole-lccn45894-p.aspx>

The information contained within this document is accurate to the best of our knowledge and representative of the part described herein. It may be necessary to make modifications to the part and/or the documentation of the part in order to impliment improvements. L-com reserves the right to make such changes as required. Unless otherwise stated, all specifications are nominal. L-com does not make any representation or warranty regarding the suitability of the part described herein for any particular purpose, and L-com does not assume liability arising out of the use of any part or document.ontained within this document is accurate to the best of our knowledge and representative of the part described herein. It may be necessary to make modifications to the part and/or the documentation of the part in order to impliment improvements. L-com reserves the right to make such changes as required. Unless otherwise stated, all specifications are nominal. L-com does not make any representation or warranty regarding the suitability of the part described herein for any particular purpose, and L-com does not assume liability arising out of the use of any part or document.

L-com CAD Drawing



THE INFORMATION CONTAINED IN THIS DRAWING IS THE SOLE PROPERTY OF L-COM, INC.. ANY REPRODUCTION IN PART OR WHOLE WITHOUT THE WRITTEN PERMISSION OF L-COM, INC. IS PROHIBITED.

ZONE	REV	DESCRIPTION	DATE	CHANGED BY	APPROVED
A		INITIAL RELEASE	05/04/2023	HBAKKE	AGANWANI

APPROVALS	DATE	DESCRIPTION
DRAWN BY: HBAKKE	05/04/2023	
CHECKED BY: DMAY	05/04/2023	
APPROVED BY: KLEFFEN	05/04/2023	

UNLESS OTHERWISE SPECIFIED, DIMENSIONS ARE IN INCHES (mm):	
OVERALL CABLE LENGTH TOLERANCE:	
<12 [305] = +1 [25] / -0	
>12 [305] <60 [1524] = +2 [51] / -0	
>60 [1524] <120 [3048] = +4 [102] / -0	
>120 [3048] <300 [7620] = +6 [152] / -0	
>300 [7620] = +5% / -0	

ALL OTHER DIMENSIONAL TOLERANCES:	
X = ± .015	
XX = ± .010	
XXX = ± .005 [1.3]	
FRACTIONS	
1/2 = .5	
3/4 = .75	
ANGLES ± 1°	

THIRD-ANGLE PROJECTION	
COLOR VARIATIONS MAY OCCUR	

PRODUCT DESCRIPTION	SMA Female Bulkhead Connector Solder Attachment For RG316, RG174, RG188, .235 inch D Hole
CATEGORY	COAXIAL
ITEM NO.	LCCN45894
CAGE CODE	43321
SCALE	NONE
CAD FILE	LCCN45894.3DDRW
SHEET	1 OF 1

- CRIMP SIZE REQUIRED:
- CONTACT: SOLDER
 - FERRULE: SOLDER

RECOMMENDED MOUNTING HOLE

STRIPPING DIMENSIONS

T:Rev:DI