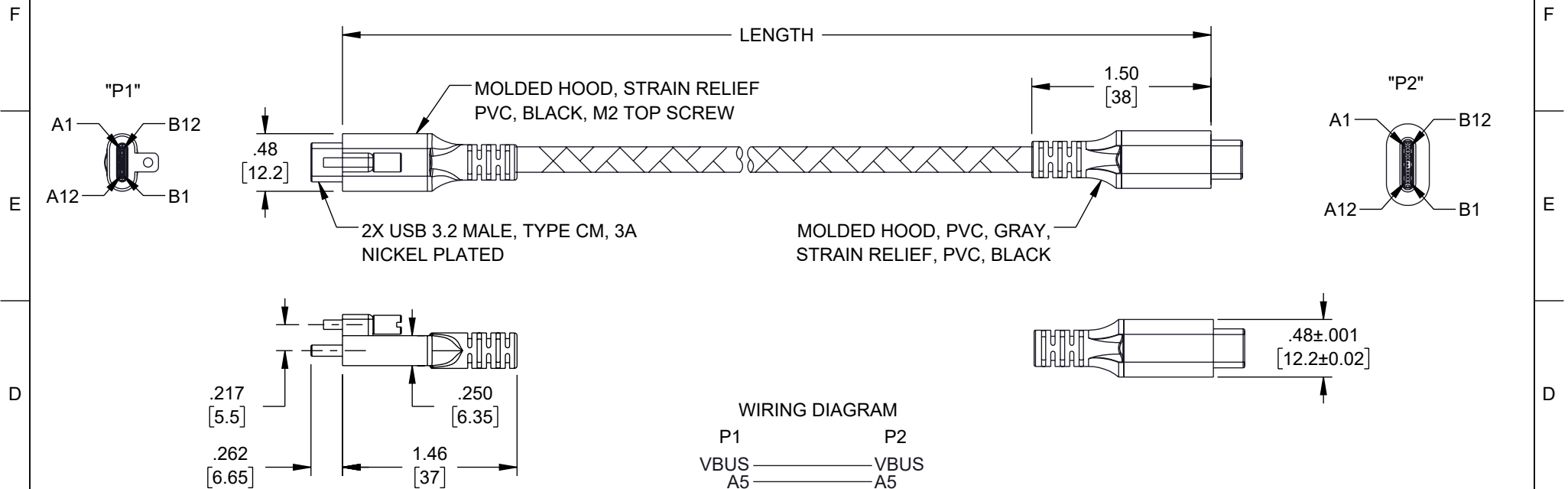
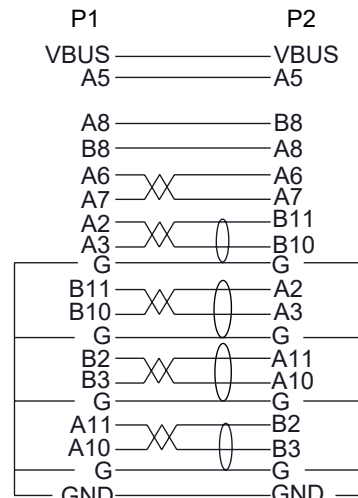


REVISION					
ZONE	REV	DESCRIPTION	DATE	CHANGED BY	APPROVED
	A	INITIAL RELEASE	02/01/2024	KGLEBOVA	GUTTADAURO



WIRING DIAGRAM



NOTES:

1. CABLE: (32AWG*1P+D+AL+HM)*4C+32AWG*1P+32AWG*4C+
+24AWG*2C+F+D(24AWG), OD: 5.2mm \pm 0.2 mm
JACKET: PVC, BLACK, NYLON BRAID, BLACK.

ELECTRICAL TEST:

2. 100% OPEN SHORT MISS WIRE TEST
3. CONTACT RESISTANCE: 5 OHM MAX.
4. INSULATION RESISTANCE: 10M OHM MIN.
5. HI-POT TEST: DC 300V/10 ms
6. PASS 5Gbps/5V3A TEST

MISCELLANEOUS:

7. CABLE ASSEMBLY TO BE TESTED FOR CONTINUITY.
8. CABLE ASSEMBLY SHALL BE INDIVIDUALLY PACKAGED.

ITEM NO	LENGTH [TOL.]	
	METERS [mm]	FEET [IN]
CAU32CC-MLMS-1M	1 [+35/-20]	3.28 [+1.38/-.79]
CAU32CC-MLMS-3M	3 [+35/-30]	9.84 [+1.38/-1.18]

UNLESS OTHERWISE SPECIFIED
LEADING DIMENSIONS ARE INCHES
DIMENSIONS IN [] ARE MILLIMETERS

TOLERANCES:	
.X = ±.2 [5]	FRACTIONS
.XX = ±.02 [0.5]	± 1/32
.XXX = ±.005 [0.13]	ANGLES ± 1°

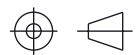
CABLE LENGTH TOLERANCES:

≤ 12	[305]	= +1	[25]	/ -0
> 12	[305]	≤ 60	[1524]	= +2 [51] / -0
> 60	[1524]	≤ 120	[3048]	= +4 [102] / -0
> 120	[3048]	≤ 300	[7620]	= +6 [152] / -0
		> 300	[7620]	= +5% / -0

ALL DIMENSIONS ARE FOR REFERENCE ONLY
AND SUBJECT TO CHANGE WITHOUT NOTICE
UN-DIMENSIONED/NON-CRITICAL FEATURES
MAY VARY IN SIZE AND LOCATION
COLORS MAY VARY



Website: www.L-com.com
Phone: 1.800.341.5266 | 1.978.682.6936



INTERPRET ALL DIMENSIONS AND
TOLERANCES PER ASME Y14.5

SCALE	SHEET
NONE	1 OF 1

DESCRIPTION
USB 3.2 USB C MALE TOP SCREW ONE SIDE, 5V, 3A, 5Gbps

SIZE	CAGE CODE	DRAWN BY	ITEM NO.	REV
A	43321	KGLEBOVA	CAU32CC-MLMS	A