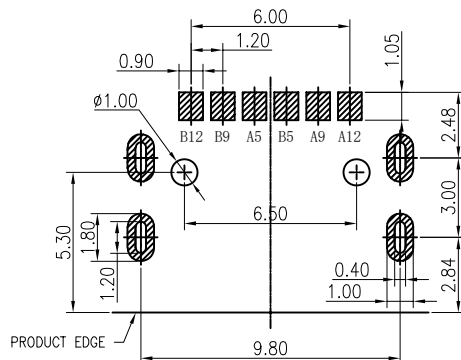
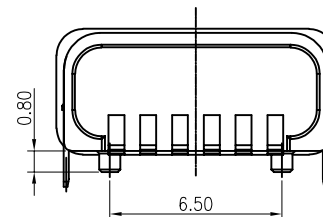
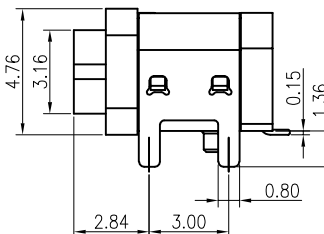
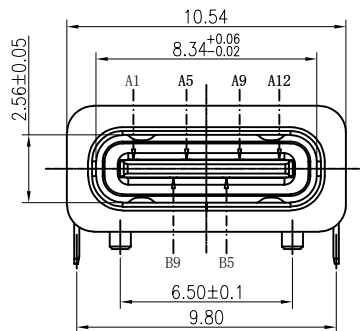
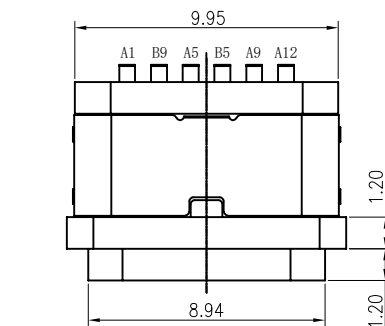


APPROVED: _____

DATE: _____ TITLE: _____



RECOMMENDED PCB LAYOUT



SPECIFICATIONS:

Material:

Insulator: Hi-temp thermoplastic, rated UL 94V-0

Insulator color: Black

Contacts: Copper Steel

Mid Plat: Stainless Steel, Clear Only

Shell: Stainless Steel, Nickel plated

Shielding Plate: Stainless Steel, Nickel plated

Waterproof: Silicone Rubber, Color: Black

Plating:

Gold flash over Nickel underplate on contact area

Tin over Nickel underplate on solder tails

Electrical:

Voltage rating: 3V

Current rating: 3A

LLCR: 40 mohms Max (for VBUS/GND& Other Pins)

50 mohms Max (for Shield)

10 mohms Max (for LLCR Max, Change of all Pins)

Insulation resistance: 100 Mohms min.

Dielectric withstanding: 100V AC For 1 Minute

Mechanical:

Mating force: 0.5~2.0Kg

Unmated force: 0.8~2.0 Kg

Durability: 10,000 Cycles

Temperature Rating:

Operating temperature: -35°C ~ +85°C

Environmental:

Lead free, RoHS compliant.



Rev	AWO #	Description	Date	Appr
-		RELEASED	4/7/22	
A		UPDATE TITTLE	8/19/24	LH/RC
B		UPDATE DRAWING	1/10/25	LH/AC1
C		UPDATE DIM.	1/16/25	WY/AC1
D		UPDATE DRAWING	5/14/25	LW1/AC1

USB TYPE C PIN ASSIGNMENTS

PIN NUMBER	SIGNAL NAME	PIN NUMBER	SIGNAL NAME
A1	GND		
		B9	VBUS
A5	CC1		
		B5	CC2
A9	VBUS		
A12	GND		

PACKAGED ON TAPE & REEL

UNLESS OTHERWISE SPECIFIED ALL DIMENSIONS ARE MILLIMETERS. TOLERANCES: EXCEPT AS NOTED

MM	ANGLE
.X ± .30	X. ±10°
.XX ± .20	.X ±8°
.XXX ± .10	.XX ±5°

DRAWN	WX	4/7/22
CHECKED	LW	4/7/22
APPROVED		

THIS DRAWING CONTAINS INFORMATION THAT IS PROPRIETARY AND SHOULD NOT BE USED WITHOUT PRIOR WRITTEN PERMISSION FROM ADAM TECH

ADAM
TECH

909 Rahway Avenue,
Union, NJ 07083
Phone: 908-687-5000
Fax: 908-687-5710

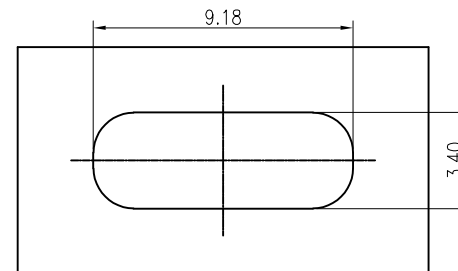
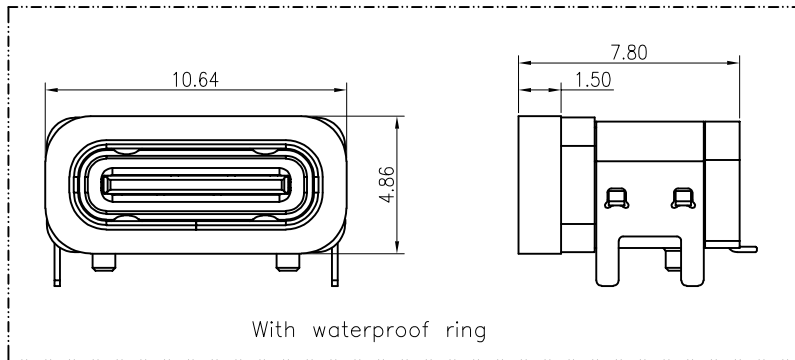
TITLE
**UNIVERSAL SERIAL BUS, TYPE C, RECEPTACLE
RIGHT ANGLE SMT, POWER, 6P, IP68**

SIZE X	PART NO. USB-C20-S-RA-CS22B-SMT-WP-BK-T/R	REV. D
REF: S00181C	SCALE: NTS	SHEET 1 OF 3

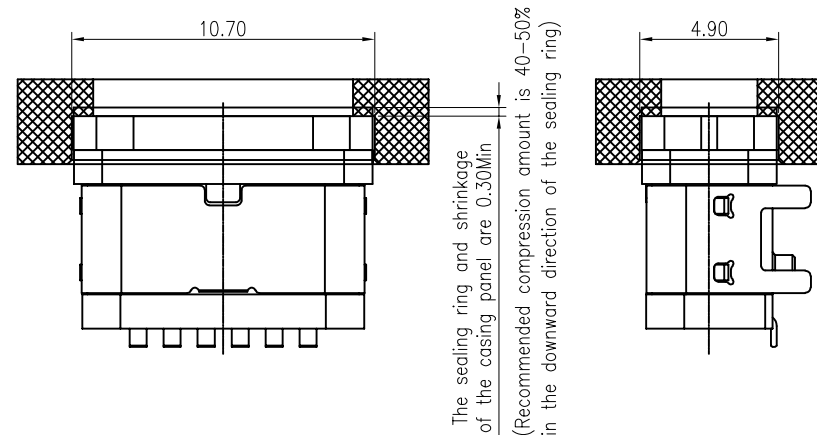
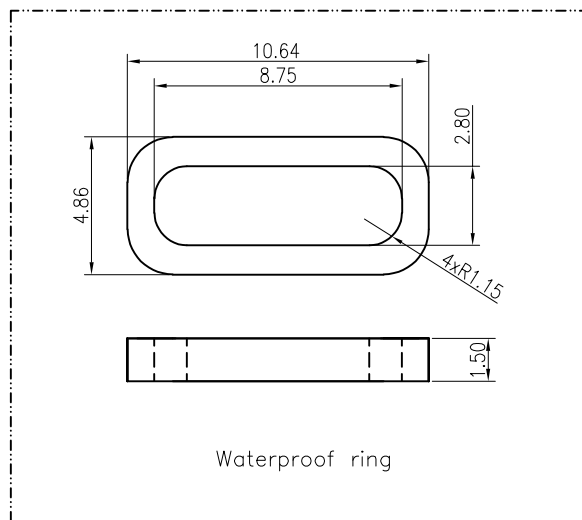
APPROVED: _____

DATE: _____ TITLE: _____

Rev	AWO #	Description	Date	Appr
SEE SHT 1 OF 3 FOR REVISION				



Seal opening reference size
(for reference only)
Environmentally friendly lubricating oil is
required when assembling the shell;



UNLESS OTHERWISE SPECIFIED ALL DIMENSIONS
ARE MILLIMETERS. TOLERANCES: EXCEPT AS NOTED

MM	ANGLE
.X ± .30	X. ± 10°
.XX ± .20	.X ± 8°
.XXX ± .10	.XX ± 5°

DRAWN	WX	4/7/22
CHECKED	LW	4/7/22
APPROVED		

THIS DRAWING CONTAINS INFORMATION THAT IS PROPRIETARY
AND SHOULD NOT BE USED WITHOUT PRIOR WRITTEN
PERMISSION FROM ADAM TECH

ADAM
TECH

909 Rahway Avenue,
Union, NJ 07083
Phone: 908-687-5000
Fax: 908-687-5710

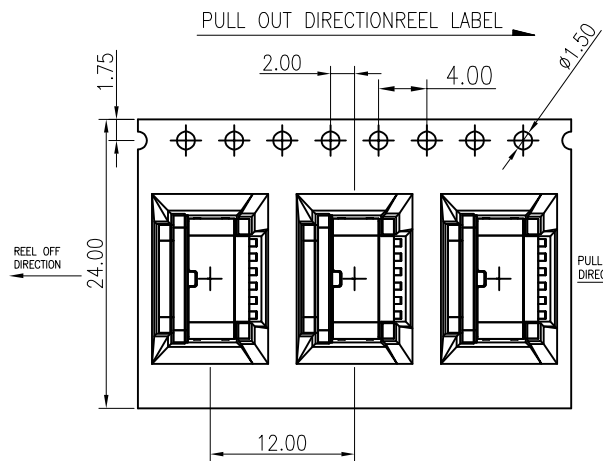
TITLE	UNIVERSAL SERIAL BUS, TYPE C, RECEPTACLE RIGHT ANGLE SMT, POWER, 6P, IP68		
-------	--	--	--

SIZE	PART NO.	REV.
X	USB-C20-S-RA-CS22B-SMT-WP-BK-T/R	D
REF:	S00181C	SHEET 2 OF 3

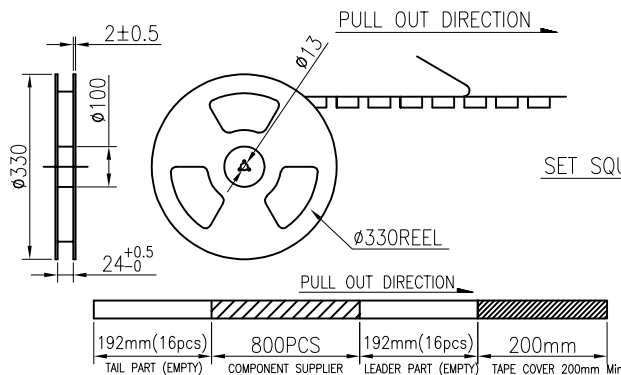
APPROVED: _____

DATE: _____ TITLE: _____

Rev	AWO #	Description	Date	Appr
SEE SHT 1 OF 3 FOR REVISION				

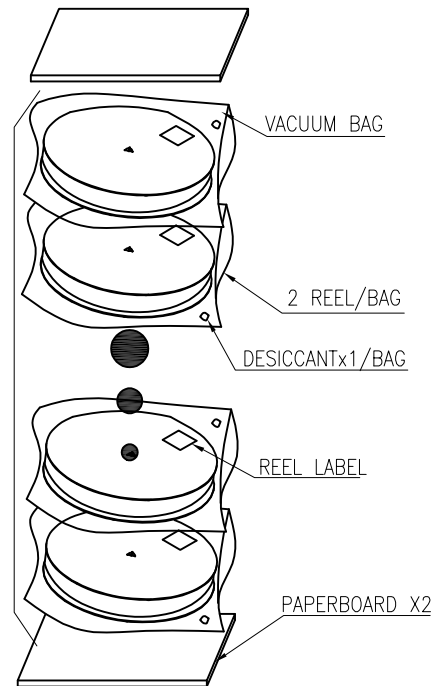


REEL



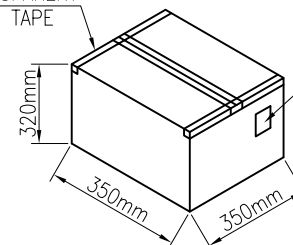
SET SQUARE X4

PE BAGx1



TRANSPARENT
GULE TAPE

SIDE LABEL



NOTES:

- MATERIAL:
 - TAPE:PS,T=0.50±0.05mm,BLUE,ESD
 - REEL:PS,
 - COVER TAPE:PE,CLEAR.
- PRIMARY PACKING:800PCS/REEL.
- SECONDARY PACKING:800PCS/10REEL/CARTON
- PEELING RESISTANCE: 0.2N(20gf)MIN;
PEELING ANGLE: 165°~180°;
PEELING SPEED: 300mm/minutes.

WEIGHT INFORMATION:

- PART MASS: 0.725g
- GROSS WEIGHT: 9.58 KG
- NET WEIGHT: 5.8 KG

UNLESS OTHERWISE SPECIFIED ALL DIMENSIONS
ARE MILLIMETERS. TOLERANCES: EXCEPT AS NOTED

MM	ANGLE
.X ±.30	X. ±10°
.XX ±.20	.X ±8°
.XXX ±.10	.XX ±5°

DRAWN	WX	4/7/22
CHECKED	LW	4/7/22
APPROVED		

THIS DRAWING CONTAINS INFORMATION THAT IS PROPRIETARY
AND SHOULD NOT BE USED WITHOUT PRIOR WRITTEN
PERMISSION FROM ADAM TECH

**ADAM
TECH**

909 Rahway Avenue,
Union, NJ 07083
Phone: 908-687-5000
Fax: 908-687-5710

TITLE UNIVERSAL SERIAL BUS, TYPE C, RECEPTACLE RIGHT ANGLE SMT, POWER, 6P, IP68		
SIZE X	PART NO. USB-C20-S-RA-CS22B-SMT-WP-BK-T/R	REV. D

REF: S00181C	SCALE: NTS	SHEET 3 OF 3
--------------	------------	--------------