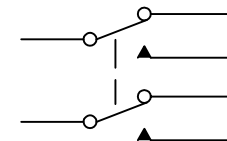
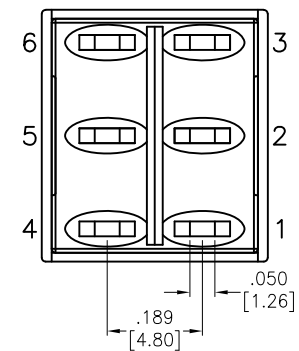
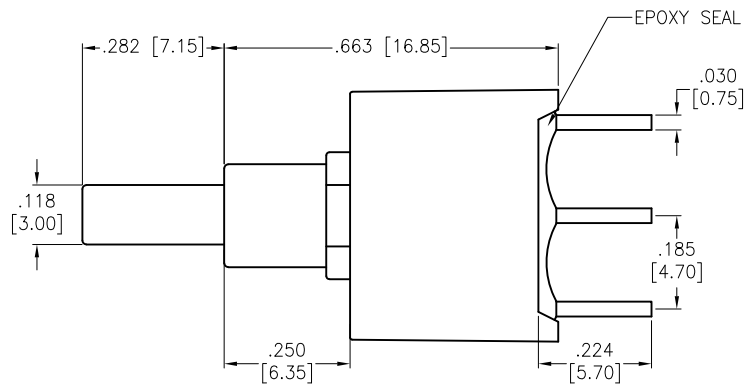
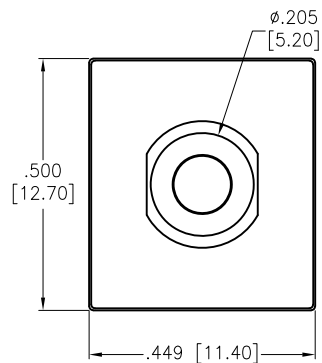


APPROVED: \_\_\_\_\_

DATE: \_\_\_\_\_ TITLE: \_\_\_\_\_

Rev	AWO #	Description	Date	Appr
-		RELEASED	9/30/21	



CIRCUIT DIAGRAM  
(DPDT) ON-MOMENTARY

#### SPECIFICATIONS:

##### Material:

Movable Contact: Copper Alloy, Silver Plated

Terminal: Copper Alloy, Silver Plated with outer layer in gold plating

##### Electrical:

Voltage rating: 120VAC or 38VDC

Current rating: 1 Amps

Contact resistance: 10 mΩ max

Insulation resistance: 1,000 Mohms min

Dielectric withstanding voltage: 1,500V RMS @Sea level

##### Mechanical:

Waterproof: IP68

Temperature Rating:

Operating temperature: -30°C to +85°C

Environmental:

Lead free, RoHS compliant



UNLESS OTHERWISE SPECIFIED ALL DIMENSIONS  
ARE INCHES [MM]. TOLERANCES: EXCEPT AS NOTED

INCHES	HOLES
.X ± .10	Ø.X ± .10
.XX ± .020	Ø.XX ± .015
.XXX ± .015	Ø.XXX ± .010

DRAWN JJ 9/30/21

CHECKED RC 9/30/21

APPROVED

THIS DRAWING CONTAINS INFORMATION THAT IS PROPRIETARY  
AND SHOULD NOT BE USED WITHOUT PRIOR WRITTEN  
PERMISSION FROM ADAM TECH

**ADAM  
TECH**

909 Rahway Avenue,  
Union, NJ 07083  
Phone: 908-687-5000  
Fax: 908-687-5710

TITLE  
PUSHBUTTON SWITCH, ON-MOMENTARY, DPDT  
GOLD OVER SILVER PLATED, PCB TYPE, IP68

SIZE X PART NO. SW-PB8-BA00B2GE-2D REV. -

REF: S00198T SCALE: NTS SHEET 1 OF 1