



FEATURES:

- 2.3 Watt SIP Package
- Efficiency to 65%
- 100% Burned In
- UL 94V-0 Package Material
- Custom Solutions Available
- Regulated Output Types
- UL Recognized
- RoHS Compliant



2.3 Watt DC-DC Converter
RD7-05S033R3

Wide Input Voltage Range
2.3 Watt DC/DC Converter

Input Specifications

Input Voltage:	5Vdc
Input Voltage Range:	4.5-9Vdc

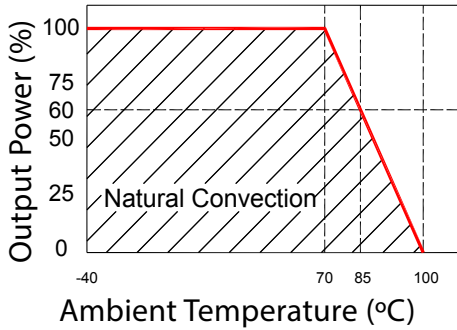
Output Specifications

Output Voltage:	±3.3Vdc	
Output Voltage Accuracy:	±3%	@Vout=3.201~3.399Vdc@Vin=4.5-9Vdc
Output Current:	700mA	
Efficiency:	65% TYP	
Ripple / Noise:	100mVp-p MAX	@20MHz Band width
Short Circuit Protection:	Continuous	@Automatics Recovery
Line Regulation:	±0.5% MAX	@LL to HL at full Load
Load Regulation:	±1.0% MAX	@0% to 100% full load

General Specifications

Operating Temperature Range:	-40°C ~ +85°C	
Storage Temperature:	-40°C ~ +100°C	
Switching Frequency:	200KHz TYP	
Humidity:	95% MAX	
Isolation Voltage:	3000Vdc	@Input to Output (60 sec/ 0.5mA)
Isolation Resistance:	1000MΩ MIN	@ 500Vdc
Cooling:	Free air convection	
MTBF:	>1,500,000 Hours	MIL-HDBK-217F@25°C, Ground Benign
Case Material:	DAP	
Weight:	4.5g TYP	
Remote Control:		
Turn On	0 ~ 0.8Vdc or open circuit	
Turn Off	2.5 ~ 12Vdc	

Temperature Derating Graph

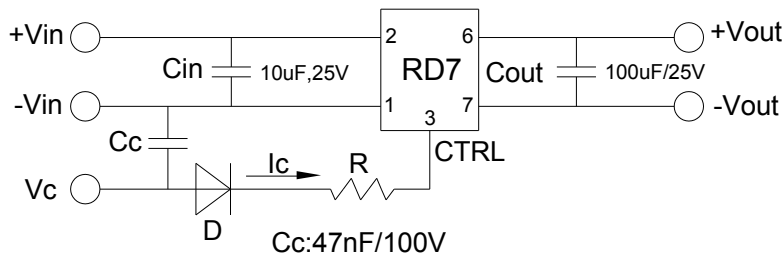


Part Number

RD7 - **05** **S** **03** **3** **R** **3**
A **B** **C** **D** **E** **F** **G**

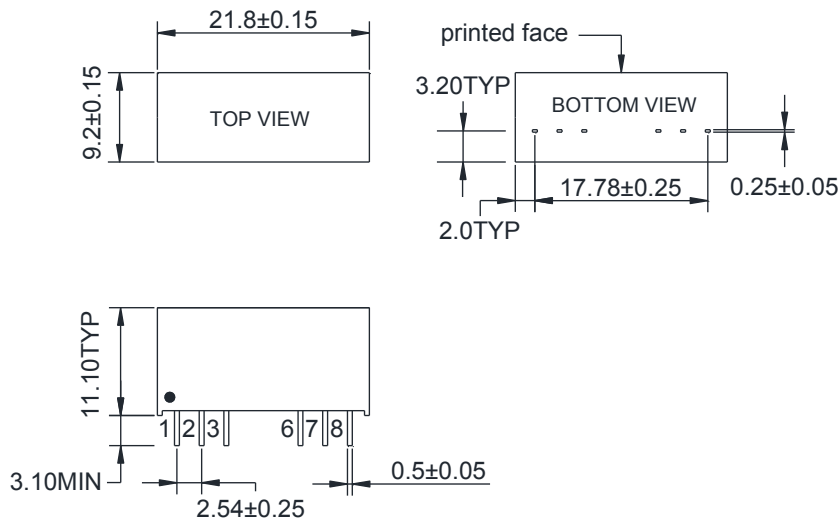
- A: Series
- B: Input Voltage
- C: Single Output (S)
- D: Output Voltage
- E: Output Power
- F: Regulated (R)
- G: Isolation Voltage

Recommended Test Circuit



1. When open or high impedance, the converter works well; when this pin is 'high', the converter shuts down. It should be noted that the input current should be between 5-10mA, exceeding the maximum 20mA will cause permanent damage to the converter
2. To make sure the product works at perfect operation status, a full loading external capacitor is necessary and it is recommended to use a high frequency low resistance electrolytic capacitor.

Outline Dimensions

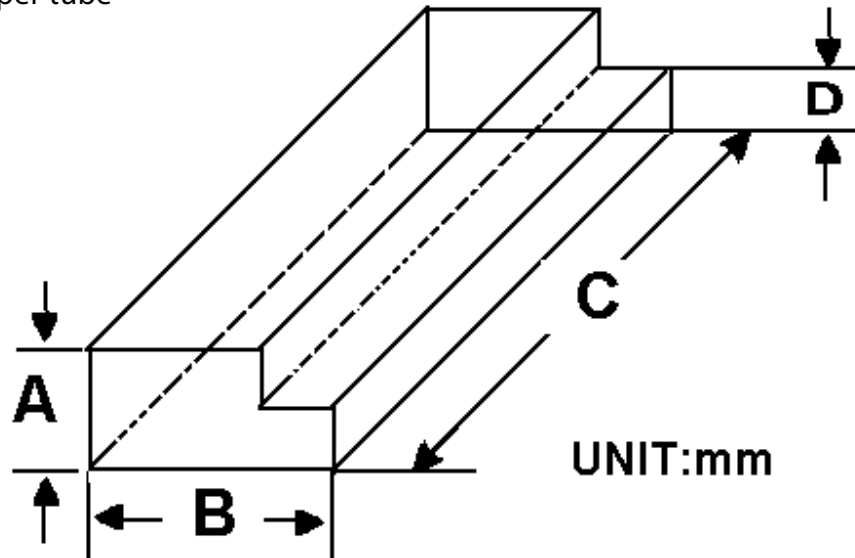


UNIT: mm TYP tolerances are ±0.50

Pin	1	2	3	6	7	8
Single	-Vin	+Vin	Ctrl-Control input can (can be left open)	+Vout	-Vout	NC

Packaging Information

Weight: 4.5 grams/pcs
 TUBE: 22 pcs
 Weight: 134.5g per tube



Size (mm)			
A	B	C	D
12.0	28.55	550	6.00

Outer carton unit: 1760pcs/80Tubes/box
 Weight: 11.8 kg per carton

