

**FEATURES:**

- 3 Watt SIP Package
- 2:1 Wide Input Voltages
- Efficiency to 70%
- 100% Burned In
- UL 94V-0 Package Material
- Custom Solutions Available
- Regulated Output Types
- UL Recognized
- RoHS Compliant



**3 Watt DC-DC Converter**  
**RD7-05D053R**

**Wide Input Voltage Range**  
**3 Watt DC/DC Converter**



**Input Specifications**

<b>Input Voltage:</b>	5Vdc
<b>Input Voltage Range:</b>	4.5-9Vdc

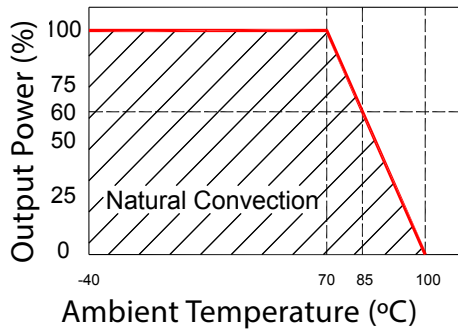
**Output Specifications**

<b>Output Voltage:</b>	±5Vdc	
<b>Output Voltage Accuracy:</b>	±2%	@Vout= ±4.85~±5.15Vdc@Vin=4.5-9Vdc
<b>Output Current:</b>	±300mA	
<b>Efficiency:</b>	70% TYP	
<b>Ripple / Noise:</b>	100mVp-p MAX	@20MHz Band width
<b>Short Circuit Protection:</b>	Continuous	@Automatics Recovery
<b>Line Regulation:</b>	±0.5% TYP	@LL to HL at full Load
<b>Load Regulation:</b>	±0.8% TYP	@0% to 100% full load

**General Specifications**

<b>Operating Temperature Range:</b>	-40°C ~ +85°C	
<b>Storage Temperature:</b>	-40°C ~ +100°C	
<b>Switching Frequency:</b>	200KHz TYP	
<b>Humidity:</b>	95% MAX	
<b>Isolation Voltage:</b>	1500Vdc	@Input to Output (60 sec/ 0.5mA)
<b>Isolation Resistance:</b>	1000MΩ MIN	@ 500Vdc
<b>Cooling:</b>	Free air convection	
<b>MTBF:</b>	>1,500,000 Hours	MIL-HDBK-217F@25°C, Ground Benign
<b>Case Material:</b>	DAP	
<b>Weight:</b>	4.5g TYP	
<b>Remote Control:</b>		
Turn On	0 ~ 0.8Vdc or open circuit	
Turn Off	2.5 ~ 12Vdc	

## Temperature Derating Graph

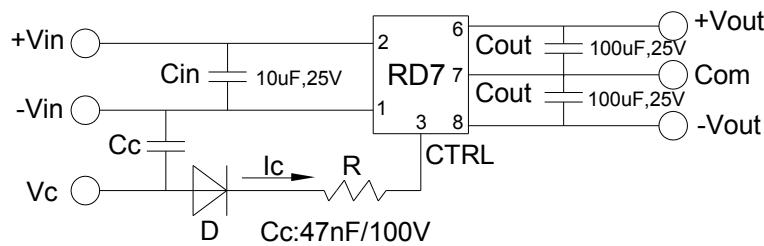


## Part Number

RD7 - 05 D 05 3 R  
A B C D E F

A: Series  
B: Input Voltage  
C: Dual Output (D)  
D: Output Voltage  
E: Output Power  
F: Regulated (R)

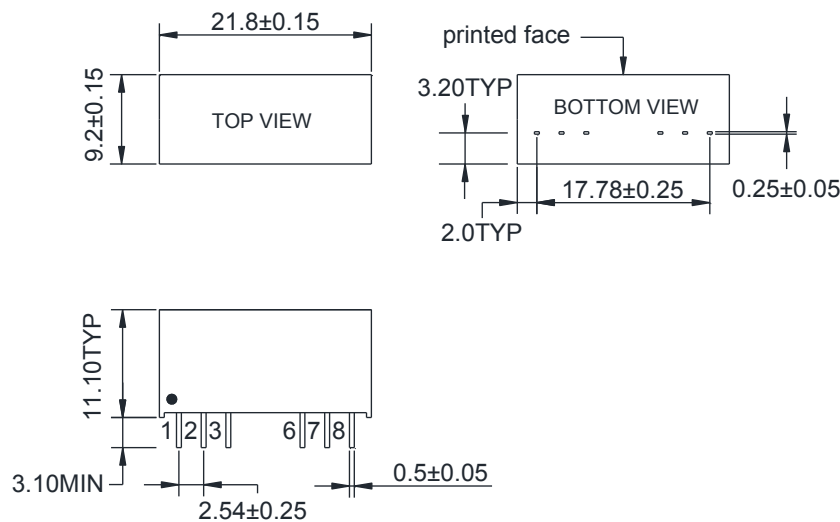
## Recommended Test Circuit



1. When open or high impedance, the converter works well; when this pin is 'high', the converter shuts down. It should be noted that the input current should be between 5-10mA, exceeding the maximum 20mA will cause permanent damage to the converter.

2. To make sure the product works at perfect operation status, a full loading external capacitor is necessary and it is recommended to use a high frequency low resistance electrolytic capacitor.

## Outline Dimensions

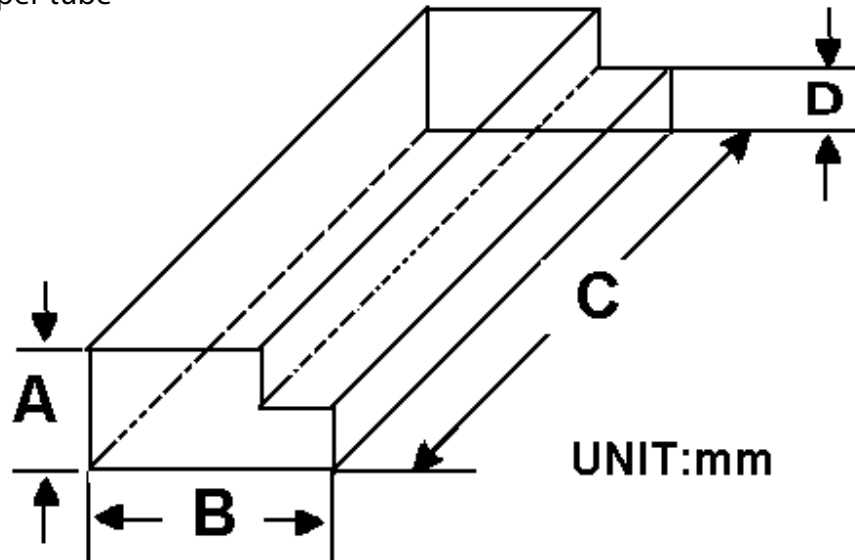


UNIT: mm TYP tolerances are ±0.50

Pin	1	2	3	6	7	8
Dual	-Vin	+Vin	Ctrl-Control input can (can be left open)	+Vout	COM	-Vout

**Packaging Information**

Weight: 4.5 grams/pcs  
 TUBE: 22 pcs  
 Weight: 134.5g per tube



Size (mm)			
A	B	C	D
12.0	28.55	550	6.00

Outer carton unit: 1760pcs/80Tubes/box  
 Weight: 11.8 kg per carton

