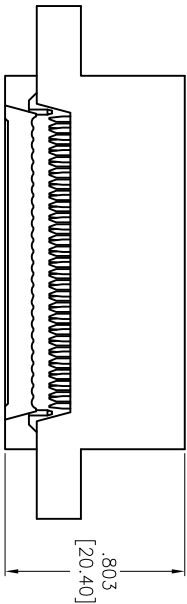
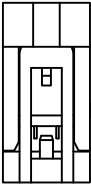
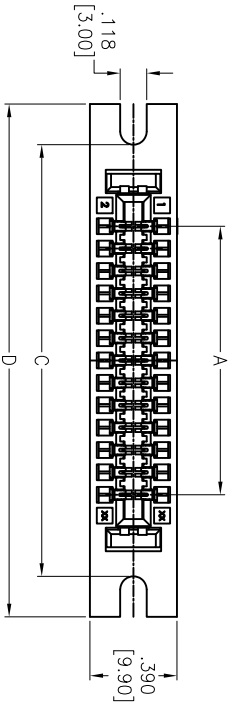
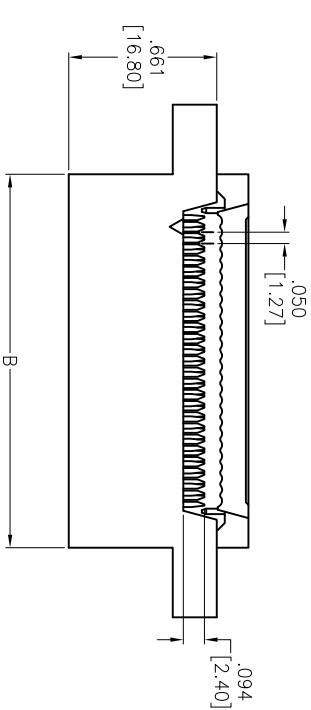


APPROVED: _____
DATE: _____ TITLE: _____

Rev	AWO #	Description	Date	Appr
-		RELEASED	8/28/06	
A		UPDATED DRAWING	2/2/15	HR/JAC



SPECIFICATIONS:

Material:
Insulator: PBT, glass reinforced, rated UL 94V-0
Insulator color: Black
Contacts: Copper Alloy
Plating:
Gold flash over Nickel underplate on mating area,
Tin over Copper underplate on IDC area
Electrical:
Current rating: 1.0 Amp
Contact resistance: 20 mohms max.
Insulation resistance: 1,000 Mohms min.
Dielectric withstanding voltage: 500 VAC for 1 minute
Temperature Rating:
Operating temperature: -40°C to +105°C
Environmental:
Lead free, RoHS compliant

Positions: 10 thru 60
A= .100 [2.54] x No. of Space
B= .100 [2.54] x No. of No. of Positions per Row + .369 [9.38]
C= .100 [2.54] x No. of No. of Positions per Row + .629 [15.98]
D= .100 [2.54] x No. of No. of Positions per Row + .991 [25.18]

Gold flash over Nickel underplate on mating area,
Tin over Copper underplate on IDC area

Electrical:

Current rating: 1.0 Amp

Contact resistance: 20 mohms max.

Insulation resistance: 1,000 Mohms min.

Dielectric withstanding voltage: 500 VAC for 1 minute

Temperature Rating:

Operating temperature: -40°C to +105°C

Environmental:

Lead free, RoHS compliant



ADAM TECH

909 Rahway Avenue, Union, NJ 07083
Phone: 908-687-5000 Fax: 908-687-5710

TITLE
.100 [2.54] IDC CARD EDGE SOCKET

MOUNTING EARS W/SLOTTED HOLES

UNLESS OTHERWISE SPECIFIED ALL DIMENSIONS ARE INCHES [MM] TOLERANCES: EXCEPT AS NOTED INCHES	HOLES	DATE	SIZE	PART NO.	REV.
.X ± .10 .XX ± .020 .XXX ± .015	ØX ± .10 ØXXX ± .015 ØXXX ± .010		X	FCE-XX-SG-E	A
DRAWN	SS	8/28/06			
CHECKED					
APPROVED					

REF: S00019C SCALE: NTS SHEET 1 OF 1