

MK Series

4 and 6 Digit Electromechanical Totalizers



MK Series counters offer an exceptionally long count life of at least 250 million counts, ensuring absolute accuracy even with a 10% voltage variation. Available in 4 or 6-digit models with manual or electric reset options, these counters feature varied mounting styles, including a spring clip mount that ensures a clean, uncluttered panel. Installation is quick and easy, thanks to 0.020" x 0.11" quick push-on connectors, making the MK Series a reliable and efficient choice for a wide range of applications.

Key Features

- CE Certified
- Rugged Case
- Varied Mounting Styles
- 4 and 6 Digits with Reset Options
- Many Standard Voltages
- 250 Million Count Life, Minimum

Applications

- Production counting,
- line counting (printers),
- events,
- fees,
- where count must be retained even if power is lost.

Dimensions

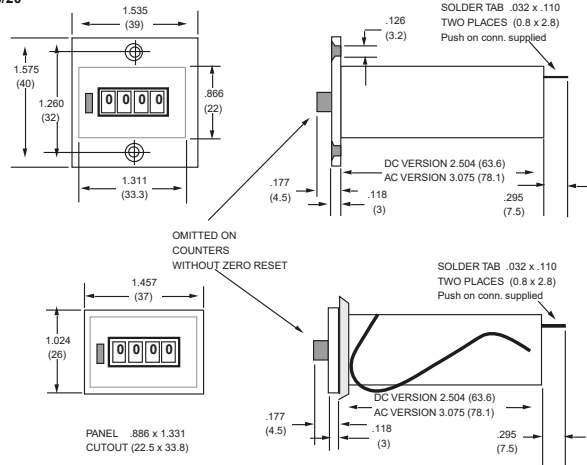
Display	4-digit, 6-digit
Reset	4-digit: manual 6-digit: none, manual, electric, manual and electric
Digits	.160" white on black wheels
Operating Voltages	5, 6, 12, 24, 48, 110, 220 VDC; 12, 24, 48, 115, 230 VAC
Count Speed	10, 25, CPS VDC; 18 CPS VAC only
Temperature	+14°F to +114°F (-10°C to +45°C)
Housing	Rugged, black, polycarbonate
Termination	Terminal pins 0.110" x 0.032 connectors supplied
Weight	3 oz
Max. Count Time	Continuous, 50/50 or 60/40 on/off pulse ratio
Approvals	CE Approved

Count Input

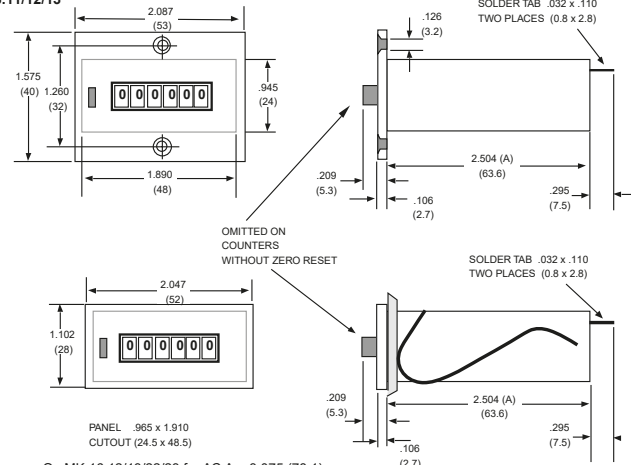
Voltage	Count per second	Time in millisecond on	Time in millisecond off	Pulse Ratio	Power Consumption	
					Count	Reset
DC	10 25	50 24	50 16	1:1 3:2	2W 2W	9W
AC	18	27	27	1:1	3VA	14VA

Dimensions

MKS 14.11/21
MKS 16.10/20



MK 16.10/02/03
MK 18.10
MK 16.11/12/13



Part Number

EXAMPLE:

MK16 1 2 24 VDC 25 CPS TB

Series

MK14 = 4 digits with reset (1.32" wide cut out)
MK16 = 6 digits with/without reset (1.89" wide cut out)

Mounting

0 = Rear mount
1 = Screw panel
2 = Spring clip

Reset

0 = Non-reset (6 digit only)
1 = Manual push button
2 = Electric (6 digit only)
3 = Both (6 digit only)

Voltages (specify)

5, 6, 12, 24, 48, 115 and 230 VDC 12, 24, 48, 115 and 230 VAC

Count Speeds (specify)

10, 25 CPS DC; 18 CPS AC

Available Options (add to end of part number)

FL - 6" wire leads (MOQ of 100pc)
LT - Low temperature (-22°F to +115°F)
HT - High temperature (+14°F to +140°F)
TB - Terminal block