

Structural profiles

Slot stones and screws

Order instruction:

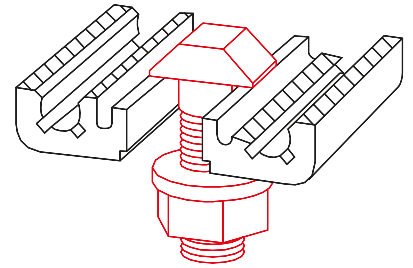
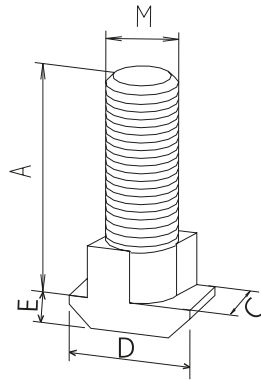
- Purchase only in lot sizes and a multiple of that see product table below

T-head bolt



- For fixing mitre joints and angle brackets
- Can be inserted into any position in the profile slot
- The action of tightening turns it into the final clamping position

Material: Galvanised steel
Includes: Complete with nut and washer



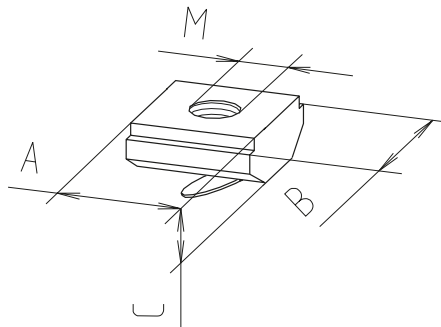
| Code No. | Type | lot sizes | Slot geometry | A | C | D | E | M |
|----------|-------|-------------------|---------------|----|-----|------|---|----|
| 4016201 | M8x25 | 10, 20, 30... pcs | 40 | 25 | 9.8 | 15.5 | 4 | M8 |

[mm]

Slot stone -F-

- Simply slid/inserted edge-first into the profile slot
- Fixed in the desired position by the spring clip

Material: Galvanised steel



| Code No. | Type | lot sizes | Slot geometry | A | B | C | M |
|----------|------|-------------------|---------------|----|----|---|----|
| 4006710 | M3 | 10, 20, 30... pcs | 30 | 10 | 12 | 4 | M3 |
| 4006716 | M4 | 10, 20, 30... pcs | 30 | 10 | 12 | 4 | M4 |
| 4006711 | M5 | 10, 20, 30... pcs | 30 | 10 | 12 | 4 | M5 |
| 4006712 | M6 | 10, 20, 30... pcs | 30 | 10 | 12 | 4 | M6 |
| 4006715 | M4 | 10, 20, 30... pcs | 40 | 10 | 14 | 4 | M4 |
| 4006713 | M5 | 10, 20, 30... pcs | 40 | 10 | 14 | 4 | M5 |
| 4006714 | M6 | 10, 20, 30... pcs | 40 | 10 | 14 | 4 | M6 |

[mm]