

## Accessories

### Bracing plate



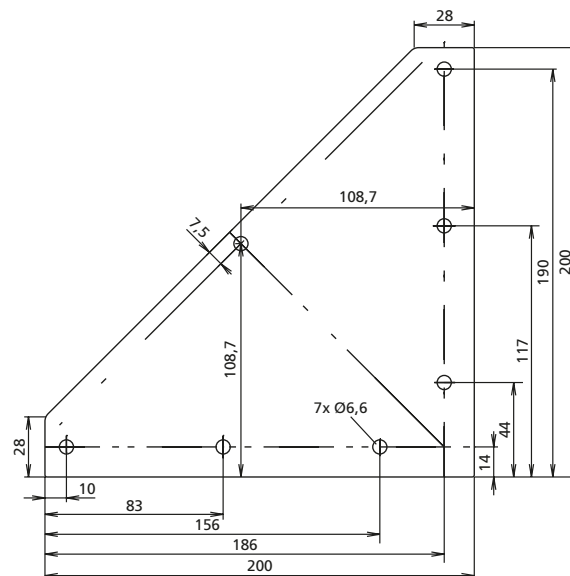
- For additional reinforcement if required

**Material:**

Black powder-coated steel, galvanised fastenings

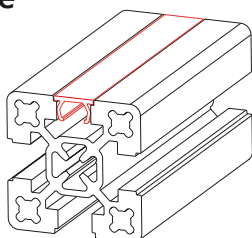
**Includes:**

Complete with fixing set



Code No.	Slot geometry
4012112	40

### Cover profile



- For the flush covering of longitudinal slots.
- Due to the geometry of type 1, it is possible to route leads in the slot. Type 2, on the other hand, is easier to take out of the profile slot (without leaving residues).

**Material:**

Plastic, further special colours available on request

White  
RAL 9006



Grey  
RAL 7035



Yellow  
RAL 1021



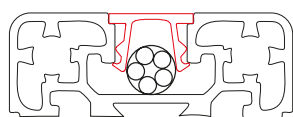
Red  
RAL 3020



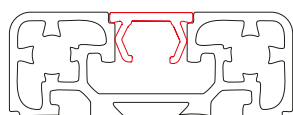
Blue  
RAL 5005



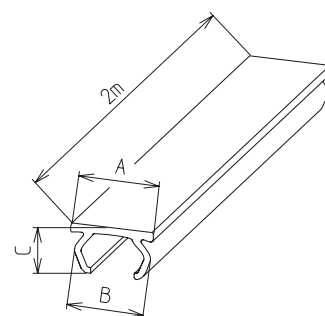
Black  
RAL 9005



Type 1



Type 2



Code No.	Type	Colour	A	B	C
4000575	2	Grey	12	11.2	6.4
4000577	2	White	12	11.2	6.4
4000579	2	Yellow	12	11.2	6.4
4000581	2	Red	12	11.2	6.4
4000583	2	Blue	12	11.2	6.4
4000570	2	Black	12	11.2	6.4
4000585	1	Yellow	12	11.2	6.4
4008570	1	Black	12	11.2	6.4
4000586	1	Transparent	12	11.2	6.4

Please note that, for typographical reasons, the colours illustrated here are only an approximation of the RAL colours.