



Energy Conservation Timer Solid-State Output

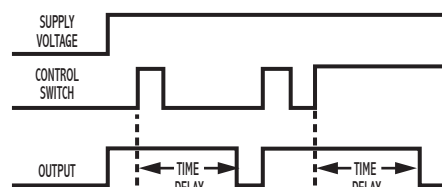


SPECIFICATIONS

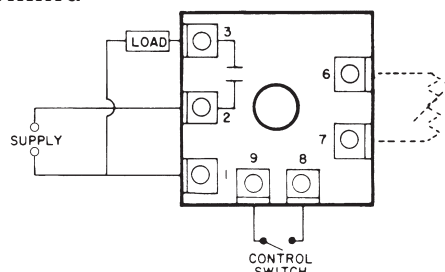
TIMING RANGES	Virtually unlimited See page 77 for standard ranges available.	
OUTPUT RATING	Solid-state, SPST-N.O. 1 amp resistive; 1 amp 25VA @ 24VAC 1 amp 125VA @ 120VAC .5 amp 125VA @ 240 VAC	
TIMING TOLERANCES	Minimum Setting	+0 – 20%
	Maximum Setting	±10%.
REPEATABILITY	1% maximum; no first cycle effect	
RESET TIMES	Before Time Out	100 mSEC
	After Time Out	50 mSEC
RECYCLE TIME	40 mSEC	
SUPPLY VOLTAGE	24, 120 or 240 VAC, 50/60 Hz; ±10%	
FALSE TRANSFER	No	
REVERSE POLARITY	Yes	
ENCLOSURE	Surface mounted; totally encapsulated with a high quality epoxy for environmental protection.	
TEMPERATURE RATING	Operate	32° to 131°F (0° to +55°C)
	Storage	-49° to 185°F (-45° to +85°C)
TERMINATIONS	1/4" quick disconnect terminals	
WEIGHT	NET: 1.28 oz Shipping: 1.6 oz.	

OPERATION

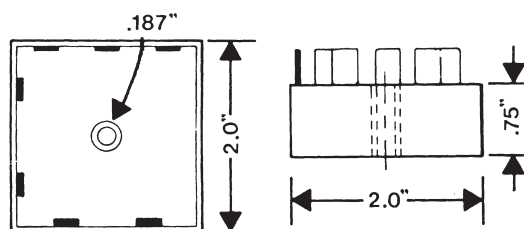
When voltage is applied to the input, the internal relay picks up and the time delay begins regardless of the position of the control switch. With the switch in the open position, when voltage is applied, the timer will complete its time delay period and the internal relay will drop out if the switch is not closed before the completion of the time delay period. With the switch in the closed position, when voltage is applied, the timer will complete its time delay period and the internal relay will drop out if the switch is not opened and reclosed before the completion of the time delay period. After voltage has been applied, closing of the control switch initiates the time delay period. Reset is accomplished by interrupting the supply voltage or re-closing the control switch.



WIRING



DIMENSIONS (INCHES)



MODEL NUMBER

MODEL NUMBER	TSM		A		C	
SUPPLY VOLTAGE						
24 VAC		24				
120 VAC		120				
240 VAC		240				
TYPE OF OPERATION						
Fixed				F		
External Resistor Adjustable; See page 82 for resistor selection.				R		
DELAY PERIOD						
See page 82 for standard ranges available						

Example: TSM-120-ARC-060—Energy conservation timer, 120 VAC, external resistor adjustable from 0.6 to 60 seconds, UL recognized.