
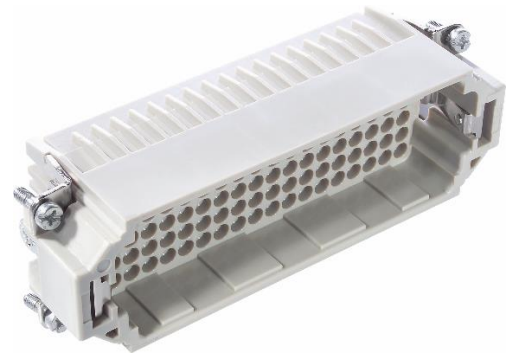


11285300	DATA SHEET	
Valid from: 27.11.2024	EPIC® H-DD 108 SCM / H-DD 108 BCM machined	

Description

- The H-DD series with machined crimp contacts - for a high number of pin in very tight spaces.
- The H-DD series with machined contacts is designed for a high number of pins in very tight spaces. This allows for smaller housing types to be chosen.



General Characteristics

Series	H-DD 108
Version	H-DD 108 male (Article 11285300)
	H-DD 108 female (Article 11286300)
	H-DD 108 male (Article 11285500)
	H-DD 108 female (Article 11286500)
Number of Contacts	108 + PE (216 + 2PE)
Termination Methods	Crimp termination: 0.14 - 2.5 mm ²
Temperature Range	-40°C to +100°C, short-term up to +125°C

Mechanical Characteristics

Cycle of mechanical operation	100
-------------------------------	-----

Electrical Characteristics

Rated Voltage, IEC	250 V
Rated Voltage, UL	600 V
Rated Voltage, CSA	600 V
Rated Impulse Voltage	2.5 kV
Rated Current, IEC	10 A
Rated Current, UL	8.5 A
Rated Current, CSA	8.5 A
Contact Resistance	< 3 mOhm
Degree of Soiling	2

Materials and Surfaces

Contacts	H-D 1.6 series, copper alloy, hard silver/gold-plated
Insulating Body	PC
Flammability Class according to UL 94	V0

Approvals

UL-Approval, E-File-Number	E75770
VDE-Approval, VDE-REG.-Nr.	B437

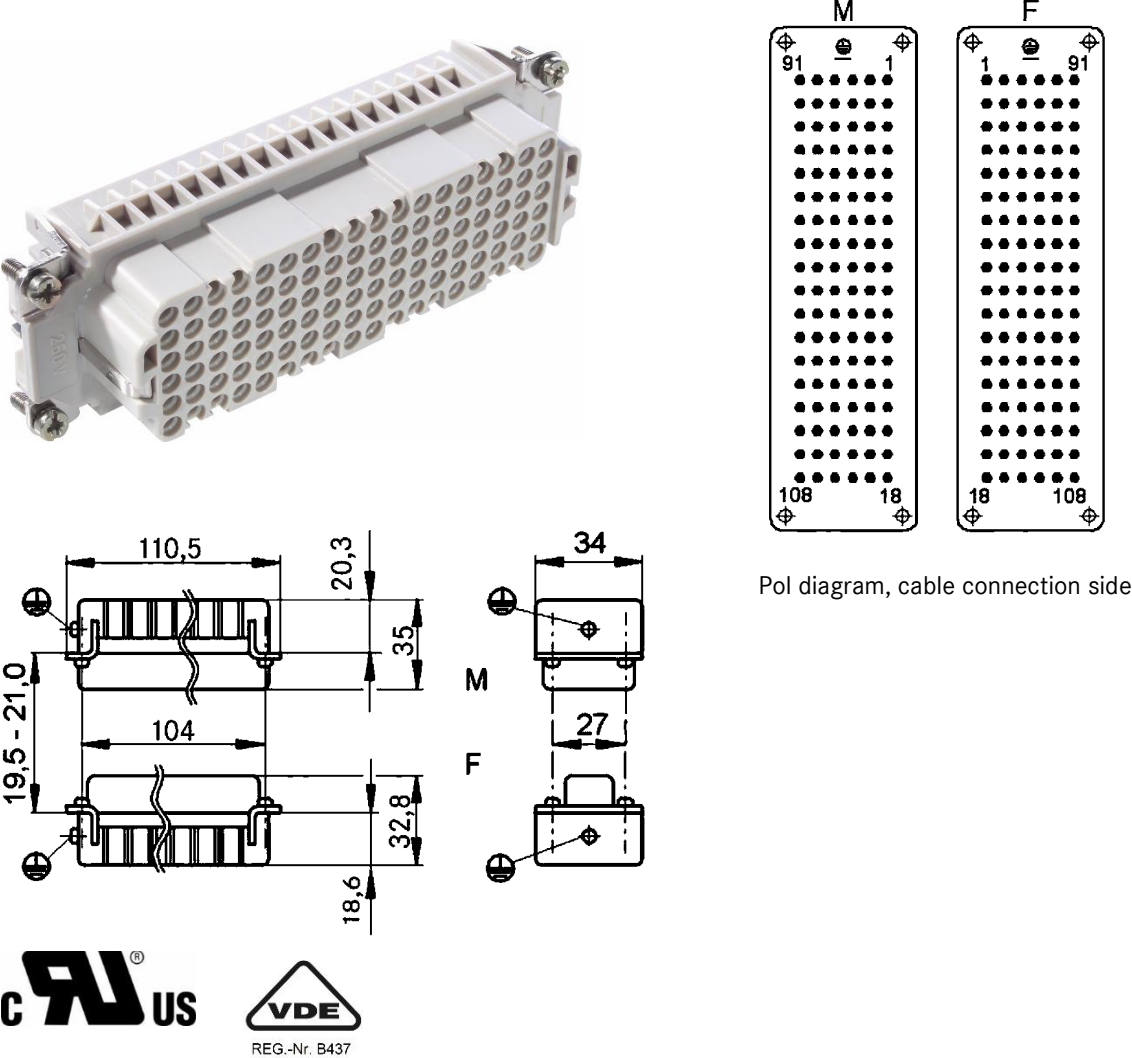
Creator: THB01/BU EPIC Released: TODV1/BU EPIC	Document: DB11285300EN Version: 04	Page 1 of 2
---	---------------------------------------	-------------

11285300	DATA SHEET	
Valid from: 27.11.2024	EPIC® H-DD 108 SCM / H-DD 108 BCM machined	

Standard

Safety Standard IEC 61984, UL 1977, C22.2 182.3

Technical Drawings



Industrial machinery and plant engineering



Space requirement

Info

Highest packing density for compact connectors
Also as EPIC® H-DD 216 available

Application range

- Mechanical engineering
- Light & sound technology
- Plastics industry

Remark

Photographs are not to scale and do not represent detailed images of the respective products.

Creator: THB01/BU EPIC Released: TODV1/BU EPIC	Document: DB11285300EN Version: 04	Page 2 of 2
---	---------------------------------------	-------------