
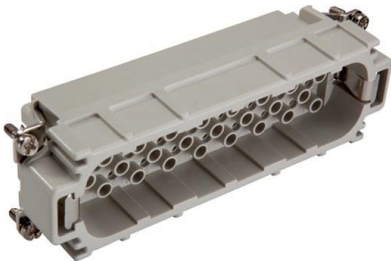


| | | |
|---------------------------|---|---|
| 11272000 | DATA SHEET |  |
| Valid from: 03.07.2024 | EPIC® H-D 64 SCM / H-D 64 BCM machined | |

Description

- H-D inserts for stamped and machined crimp contacts
- Inserts of the connector series H-D are designed for applications in which a high number of contacts are required.



General Characteristics

| | |
|---------------------|--|
| Series | H-D 64 |
| Version | Male (Article 11272000) /Female (Article 11273000) |
| Number of Contacts | 64 + PE |
| Termination Methods | Crimp termination: 0.14 - 2.5 mm ² |
| Temperature Range | -40°C to +100°C, short-term up to +125°C |

Mechanical Characteristics

| | |
|-------------------------------|-----|
| Cycle of mechanical operation | 100 |
|-------------------------------|-----|

Electrical Characteristics

| | |
|-----------------------|----------|
| Rated Voltage, IEC | 250 V |
| Rated Voltage, UL | 250 V |
| Rated Impulse Voltage | 2.5 kV |
| Rated Current, IEC | 10 A |
| Rated Current, UL | 10 A |
| Contact Resistance | < 2 mOhm |
| Degree of Soiling | 3 |

Materials and Surfaces

| | |
|---------------------------------------|---------------------------------------|
| Contacts | Copper alloy, hard silver/gold-plated |
| Insulating Body | PBT |
| Flammability Class according to UL 94 | V0 |


Approvals

| | |
|----------------------------|--------|
| UL-Approval, E-File-Number | E75770 |
|----------------------------|--------|

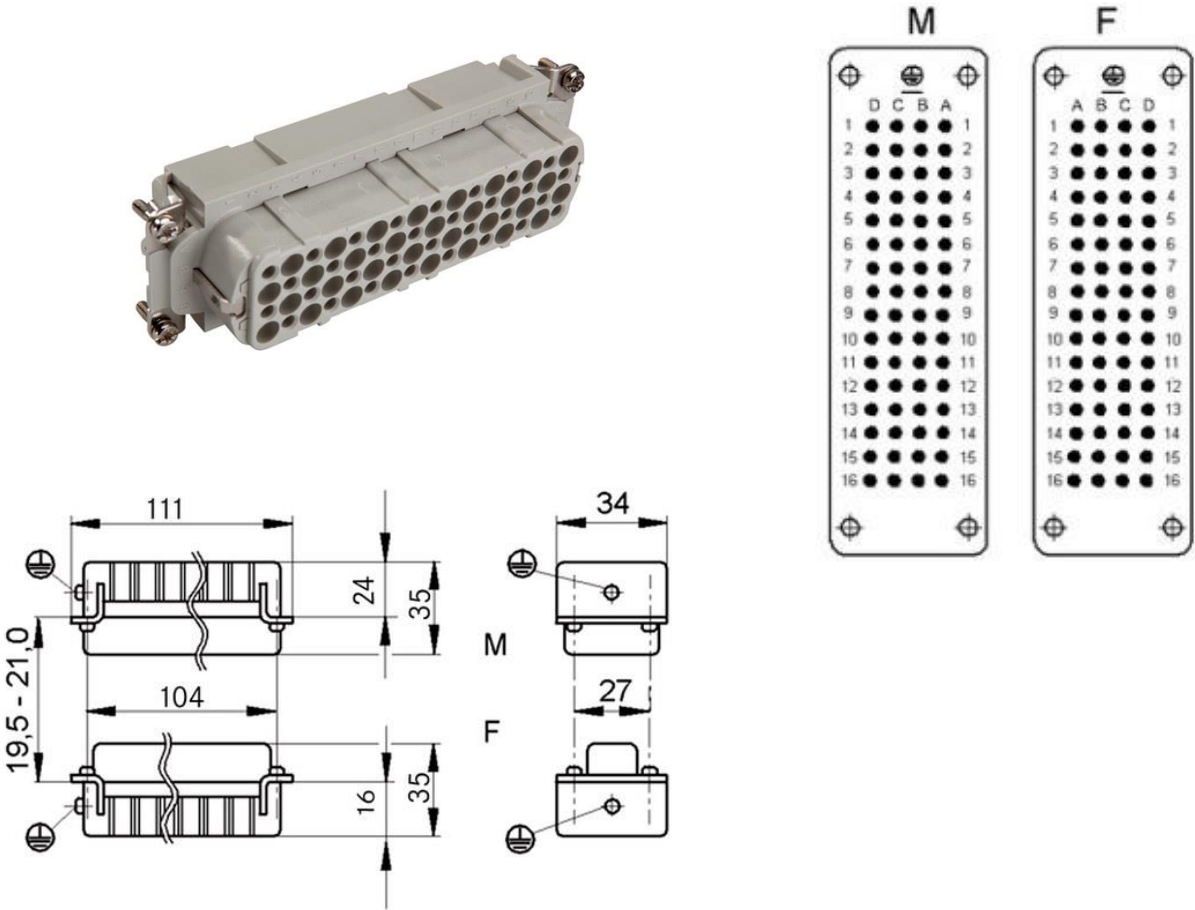
Standard

| | |
|-----------------|--------------------|
| Safety Standard | IEC 61984, UL 1977 |
|-----------------|--------------------|

| | | |
|---|---------------------------------------|-------------|
| Creator: MANA2/PDP Released: IVSE1/PDP | Document: DB11272000EN Version: 02 | Page 1 of 2 |
|---|---------------------------------------|-------------|

| | | |
|---------------------------|---|---|
| 11272000 | DATA SHEET |  |
| Valid from: 03.07.2024 | EPIC® H-D 64 SCM / H-D 64 BCM machined | |

Technical Drawings



Industrial machinery and plant engineering



Space requirement

Application range

Plant engineering
Light & sound technology

Remark

Photographs are not to scale and do not represent detailed images of the respective products.

| | | |
|---|---------------------------------------|-------------|
| Creator: MANA2/PDP Released: IVSE1/PDP | Document: DB11272000EN Version: 02 | Page 2 of 2 |
|---|---------------------------------------|-------------|