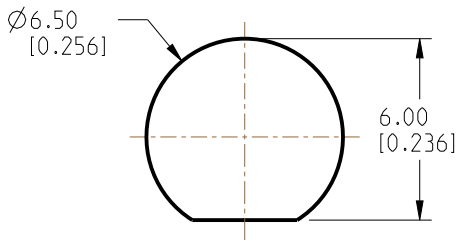
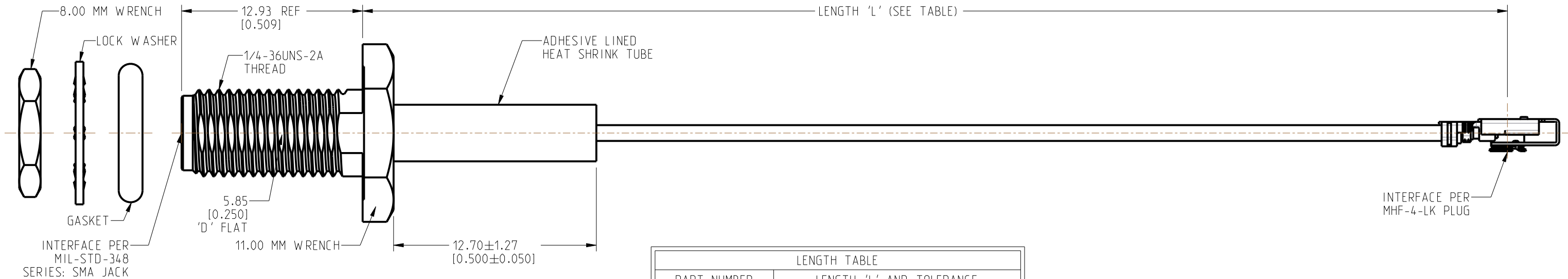


1. MATERIALS AND FINISHES:
SMA STR BHD JACK IP 67 - BRASS, GOLD PLATING
CABLE - IPEX MHF 4L LK RA PLUG ON 1.37MM CABLE
2. ELECTRICAL:
A. IMPEDANCE: 50 OHM
3. PACKAGING:
A. QUANTITY: SINGLE PACK
B. MARKING: BAG TO BE MARKED
"AMPHENOL RF, 95-902-600-XXX AND DATE CODE

SCALE 1.000



RECOMMENDED MOUNTING HOLE DIMENSIONS



LENGTH TABLE	
PART NUMBER (METRIC)	LENGTH 'L' AND TOLERANCE IN MM (INCHES)
95-902-600-050	50.00 ± 3.81 [1.969 ± 0.150]
95-902-600-100	100.00 ± 3.81 [3.937 ± 0.150]
95-902-600-150	150.00 ± 3.81 [5.906 ± 0.150]
95-902-600-200	200.00 ± 5.08 [7.874 ± 0.200]
95-902-600-250	250.00 ± 5.08 [9.843 ± 0.200]
95-902-600-300	300.00 ± 5.08 [11.811 ± 0.200]
95-902-600-350	350.00 ± 5.08 [13.780 ± 0.200]
95-902-600-400	400.00 ± 5.08 [15.748 ± 0.200]

<input checked="" type="checkbox"/> FREQUENCY: DC - 7.1 GHz	<input checked="" type="checkbox"/> CONTINUITY
<input type="checkbox"/> VSWR: ____ MAX.	<input checked="" type="checkbox"/> HI-POT: 200 VRMS
<input type="checkbox"/> INS. LOSS: ____ dB MAX.	<input type="checkbox"/> OTHER:

CUSTOMER OUTLINE DRAWING

ALL OTHER SHEETS ARE FOR INTERNAL USE ONLY

NOTICE: These drawings, specifications, or other data (1) are, and remain the property of Amphenol Corp., (2) must be returned upon request; and (3) are confidential and not to be disclosed to any person other than those to whom they are given by Amphenol Corp. The furnishing of these drawings, specifications, or other data by Amphenol Corp., or to any other person to anyone for any purpose is not to be regarded by implication or otherwise in any manner licensing, granting rights to permitting such holder or any other person to manufacture, use or sell any product, process or design, patented or otherwise, that may in any way be related to or disclosed by said drawings, specifications, or other data.

UNLESS OTHERWISE SPECIFIED
DIMENSIONS ARE METRIC [INCHES] AND TOLERANCES ARE:

<0.5mm = ±0.05mm	[<0.020 = ±0.002]
0.5 - 6mm = ±0.1mm	[0.020 - 0.236 = ±0.004]
>6.0 - 30mm = ±0.2mm	[>0.236 - 1.181 = ±0.008]
>30.0 - 120mm = ±0.3mm	[>1.181 - 4.725 = ±0.012]

MATERIAL

SEE NOTES

TITLE
SMA STR BHD JACK IP 67 TO
MHF-4L-LK RA PLUG USING
1.37 MM CABLE

Amphenol RF

SIZE B	DRAWING NO.	95-902-600-XXX	REV A
	ITEM NO.	95-902-600-XXX	
	PART NO.	95-902-600-XXX	

THIRD ANGLE PROJ. 

REFERENCE

EAR#
12551

ANGLES = $\pm 1^\circ$

ENGR.1
SIBI R

ENGR.2

DATE
08-JUL-24

SHEET NO. 2 OF 2

SCALE: 3.6:1.0