

# UM 72-SEFE/L LBGY - Lateral element

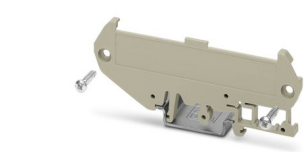


2915960

<https://www.phoenixcontact.com/us/products/2915960>

Please be informed that the data shown in this PDF document is generated from our online catalog. Please find the complete data in the user documentation. Our general terms of use for downloads are valid.

Press-drawn section housings, DIN rail mounting, Lateral element (left), with snap-on foot, width: 5 mm, height: 89.6 mm, depth: 37.6 mm



## Your advantages

- Easy installation
- Flexible size and shape
- Inexpensive as a result of reducing the number of separate housing parts

## Commercial data

Item number	2915960
Packing unit	10 pc
Minimum order quantity	250 pc
Note	Made to order (non-returnable)
Product key	ACHDBA
GTIN	4046356177955
Weight per piece (including packing)	6.63 g
Weight per piece (excluding packing)	6.63 g
Country of origin	PL

# UM 72-SEFE/L LBGY - Lateral element



2915960

<https://www.phoenixcontact.com/us/products/2915960>

## Technical data

### Product properties

Product type	Panel mounting base side part
Housing type	Press-drawn section housings
Housing series	UM
Product family	UM72
Ventilation openings present	no

### Dimensions

Width	5 mm
Height	89.6 mm
Depth	37.6 mm

### Material specifications

Color (Housing)	beige (RAL 7032)
Flammability rating according to UL 94	V0
Housing material	PA
Surface characteristics	untreated

### Environmental and real-life conditions

#### Ambient conditions

Ambient temperature (operation)	-40 °C ... 105 °C (depending on power dissipation)
Ambient temperature (storage/transport)	-40 °C ... 55 °C
Ambient temperature (assembly)	-5 °C ... 100 °C
Relative humidity (storage/transport)	80 %

### Mounting

Mounting type	DIN rail mounting
---------------	-------------------


# UM 72-SEFE/L LBGY - Lateral element



2915960

<https://www.phoenixcontact.com/us/products/2915960>

## Approvals

 To download certificates, visit the product detail page: <https://www.phoenixcontact.com/us/products/2915960>



**UL Recognized**

Approval ID: E240868

# UM 72-SEFE/L LBGY - Lateral element



2915960

<https://www.phoenixcontact.com/us/products/2915960>

## Classifications

### ECLASS

ECLASS-13.0	27190602
-------------	----------

### ETIM

ETIM 9.0	EC002779
----------	----------

### UNSPSC

UNSPSC 21.0	31261500
-------------	----------

# UM 72-SEFE/L LBGY - Lateral element



2915960  
<https://www.phoenixcontact.com/us/products/2915960>

## Environmental product compliance

EU RoHS	
Fulfills EU RoHS substance requirements	Yes, No exemptions
China RoHS	
Environment friendly use period (EFUP)	EFUP-E
	No hazardous substances above the limits
EU REACH SVHC	
REACH candidate substance (CAS No.)	No substance above 0.1 wt%

Phoenix Contact 2025 © - all rights reserved  
<https://www.phoenixcontact.com>

Phoenix Contact USA  
586 Fulling Mill Road  
Middletown, PA 17057, United States  
(+717) 944-1300  
[info@phoenixcon.com](mailto:info@phoenixcon.com)