

Please be informed that the data shown in this PDF document is generated from our online catalog. Please find the complete data in the user documentation. Our general terms of use for downloads are valid.



Component housing, Lower housing part with metal foot catch, without vents, width: 45 mm, height: 75 mm, color: green (similar RAL 6021), cross connection: without bus connector, number of positions cross connector: not relevant

Your advantages

- Tool-free mounting

Commercial data

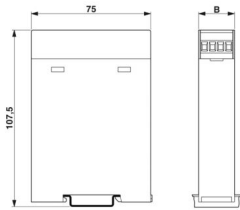
| | |
|--------------------------------------|---------------|
| Item number | 2764849 |
| Packing unit | 10 pc |
| Minimum order quantity | 10 pc |
| Sales key | AC11 |
| Product key | ACHCGA |
| GTIN | 4017918131906 |
| Weight per piece (including packing) | 64.47 g |
| Weight per piece (excluding packing) | 62.118 g |
| Customs tariff number | 85389099 |
| Country of origin | PL |

Technical data

Product properties

| | |
|------------------------------|---|
| Product type | Lower housing part |
| Housing type | Component housing |
| Housing series | EG |
| Product family | EG...G |
| Type | Lower housing part closed, housing cover necessary to complete the module |
| Number of positions | 16 |
| Max. number of positions | 0) |
| Ventilation openings present | no |

Dimensions

| | |
|---------------------|---|
| Dimensional drawing |  |
| Width | 45 mm |
| Height | 75 mm |

PCB design

| | |
|---------------|-------------------|
| PCB thickness | 1.4 mm ... 1.8 mm |
|---------------|-------------------|

Material specifications

| | |
|--|------------------|
| Color (Lower housing part) | green (RAL 6021) |
| Material | PC |
| Flammability rating according to UL 94 | V0 |
| Surface characteristics | untreated |

Environmental and real-life conditions

Ambient conditions

| | |
|---|--|
| Max. IP code to attain | IP20 |
| Ambient temperature (operation) | -40 °C ... 105 °C (depending on power dissipation) |
| Ambient temperature (storage/transport) | -40 °C ... 70 °C |
| Ambient temperature (assembly) | -5 °C ... 100 °C |

PCB data

| | |
|----------------------|-------------------|
| Thickness of the PCB | 1.4 mm ... 1.8 mm |
|----------------------|-------------------|

Mounting

EG 45-GMF/PC GN - Mounting base housing

2764849

<https://www.phoenixcontact.com/us/products/2764849>



| | |
|---------------|-------------------|
| Mounting type | DIN rail mounting |
|---------------|-------------------|

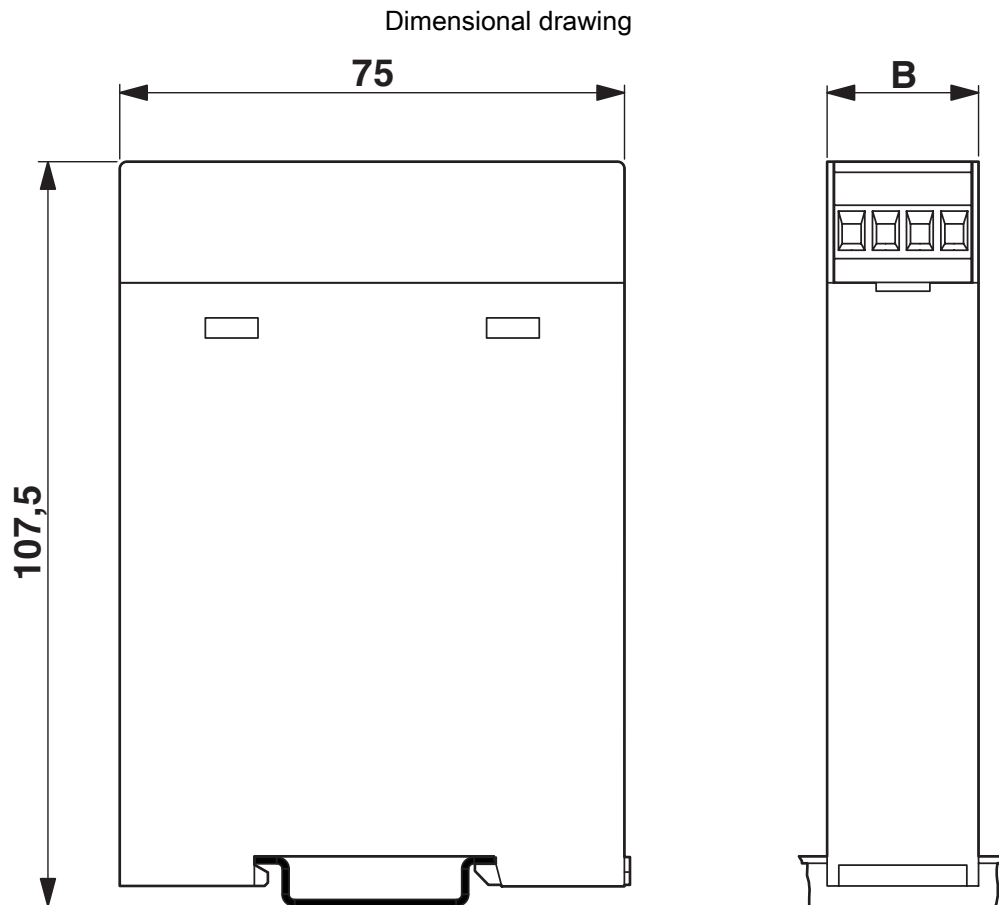
EG 45-GMF/PC GN - Mounting base housing

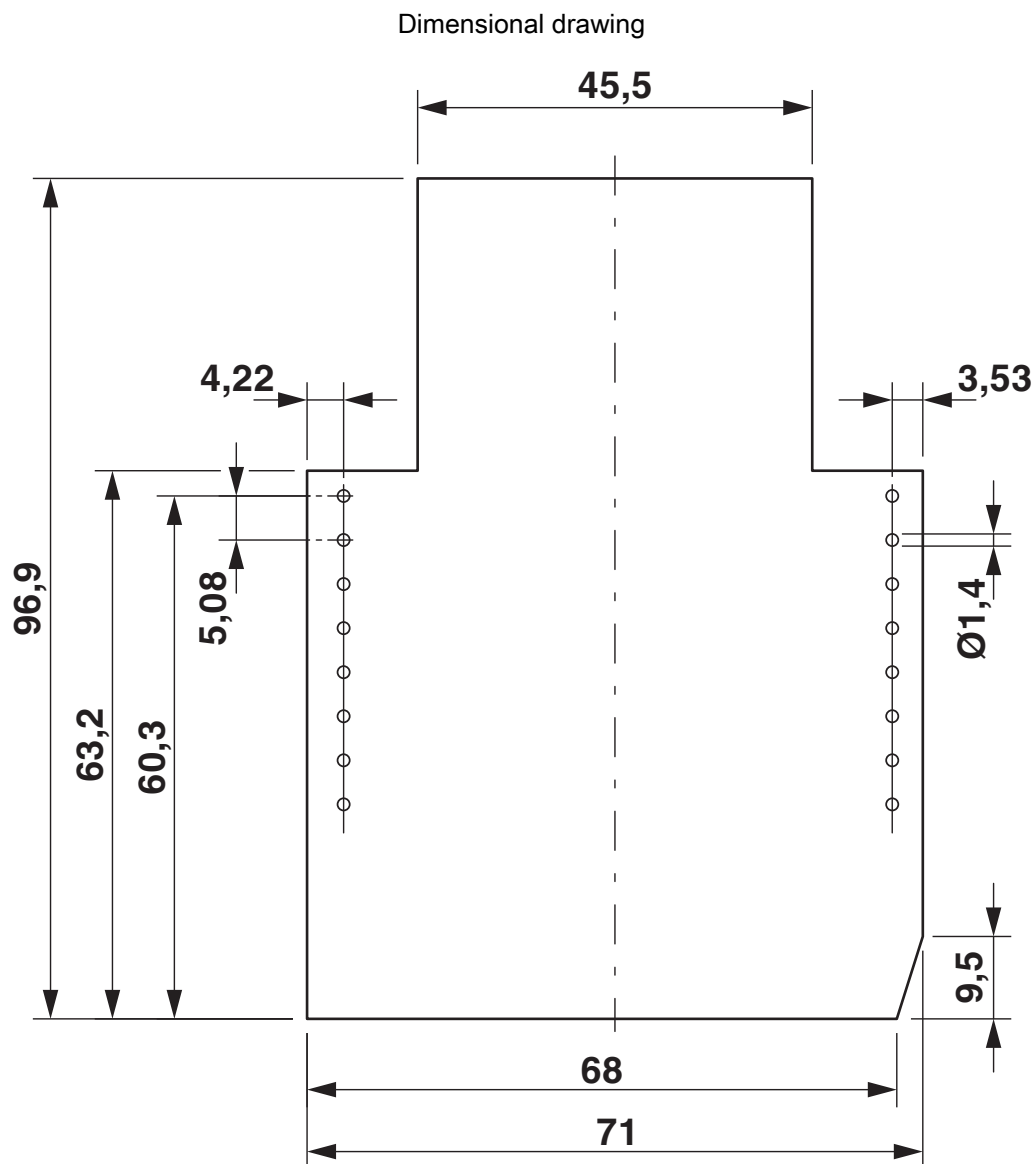
2764849

<https://www.phoenixcontact.com/us/products/2764849>



Drawings



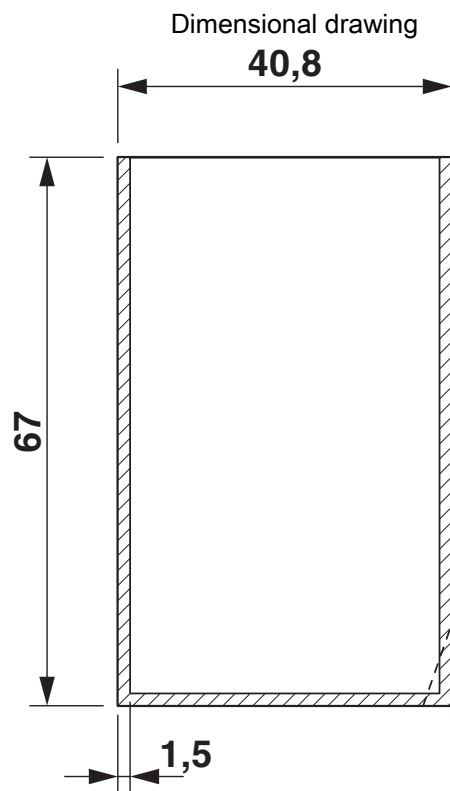


Component mounting side, if the double-level upper part is used

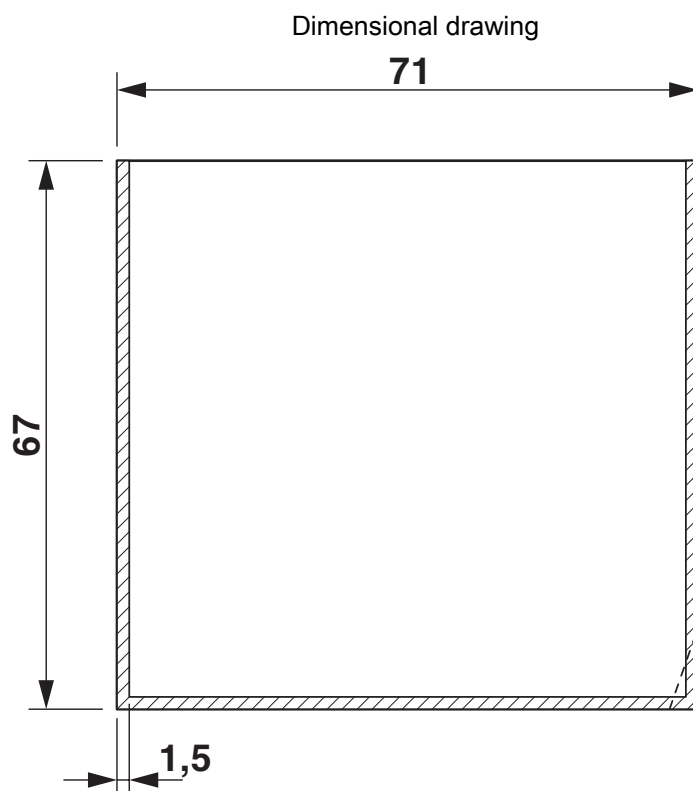
EG 45-GMF/PC GN - Mounting base housing

2764849

<https://www.phoenixcontact.com/us/products/2764849>



valid for PCB 1; 3; 5 and 6, see explosion drawing

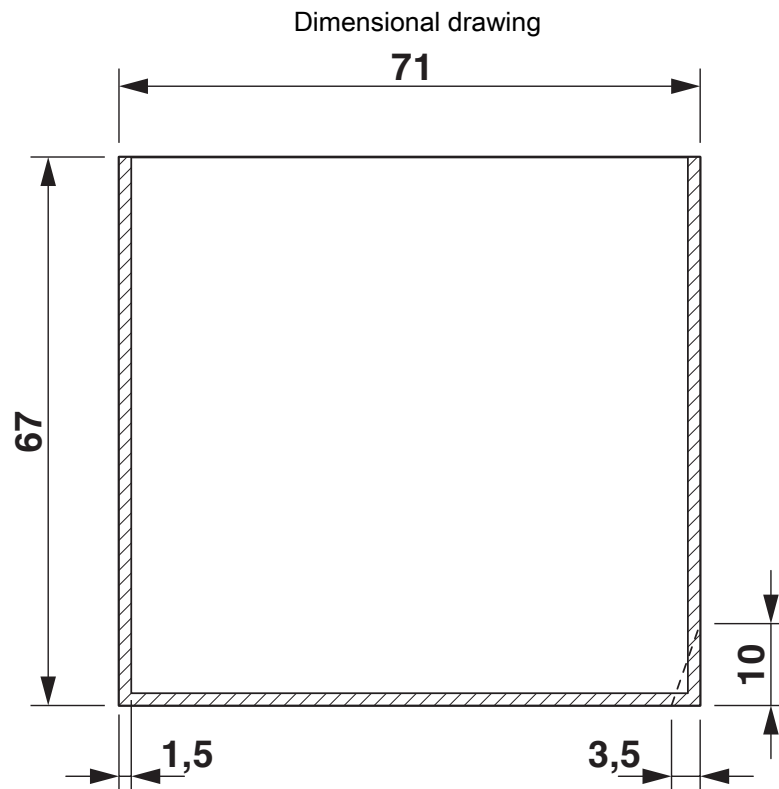


valid for PCB 7 and 12, see explosion drawing

EG 45-GMF/PC GN - Mounting base housing

2764849

<https://www.phoenixcontact.com/us/products/2764849>

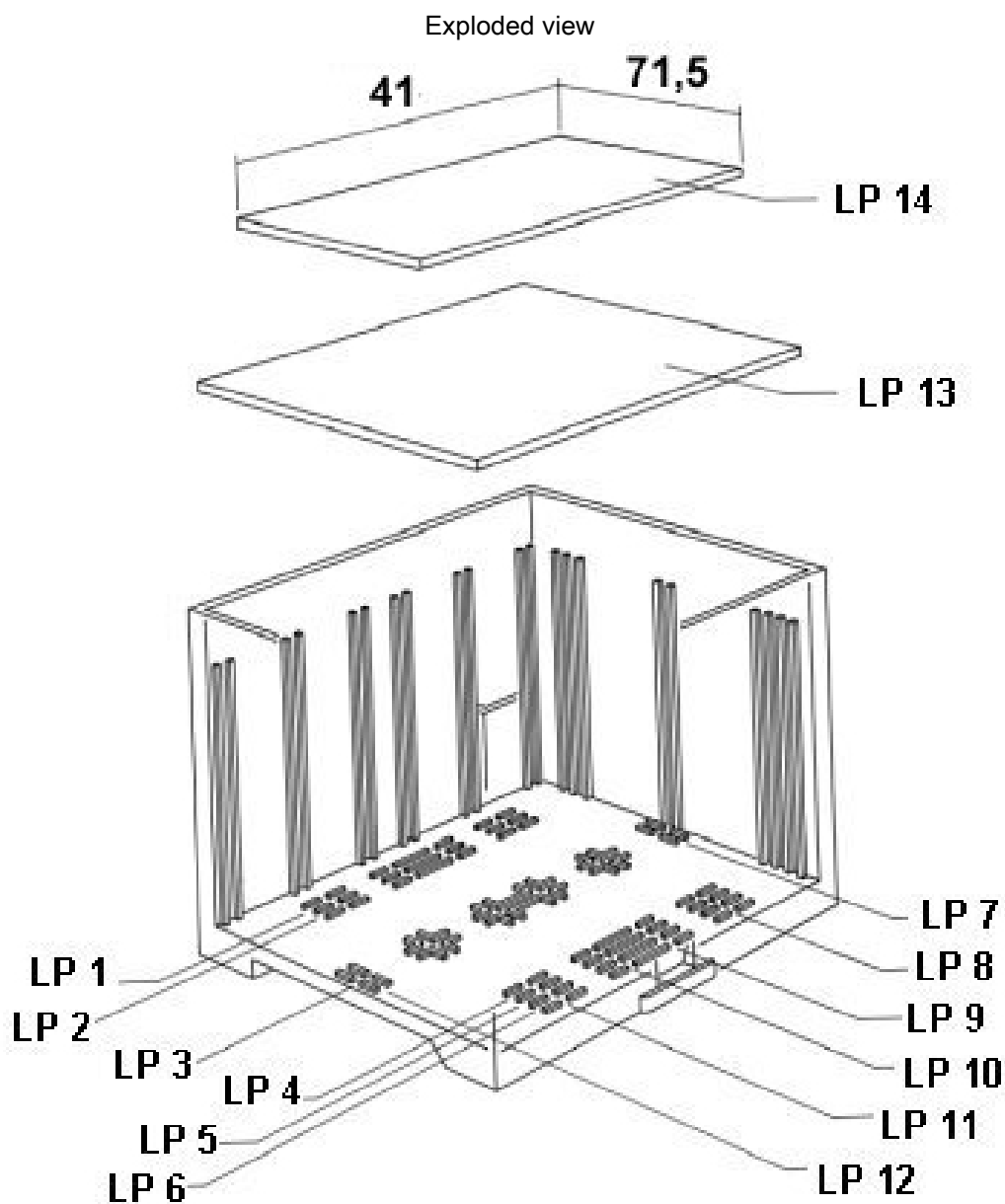


valid for PCB 10, see explosion drawing

EG 45-GMF/PC GN - Mounting base housing

2764849

<https://www.phoenixcontact.com/us/products/2764849>

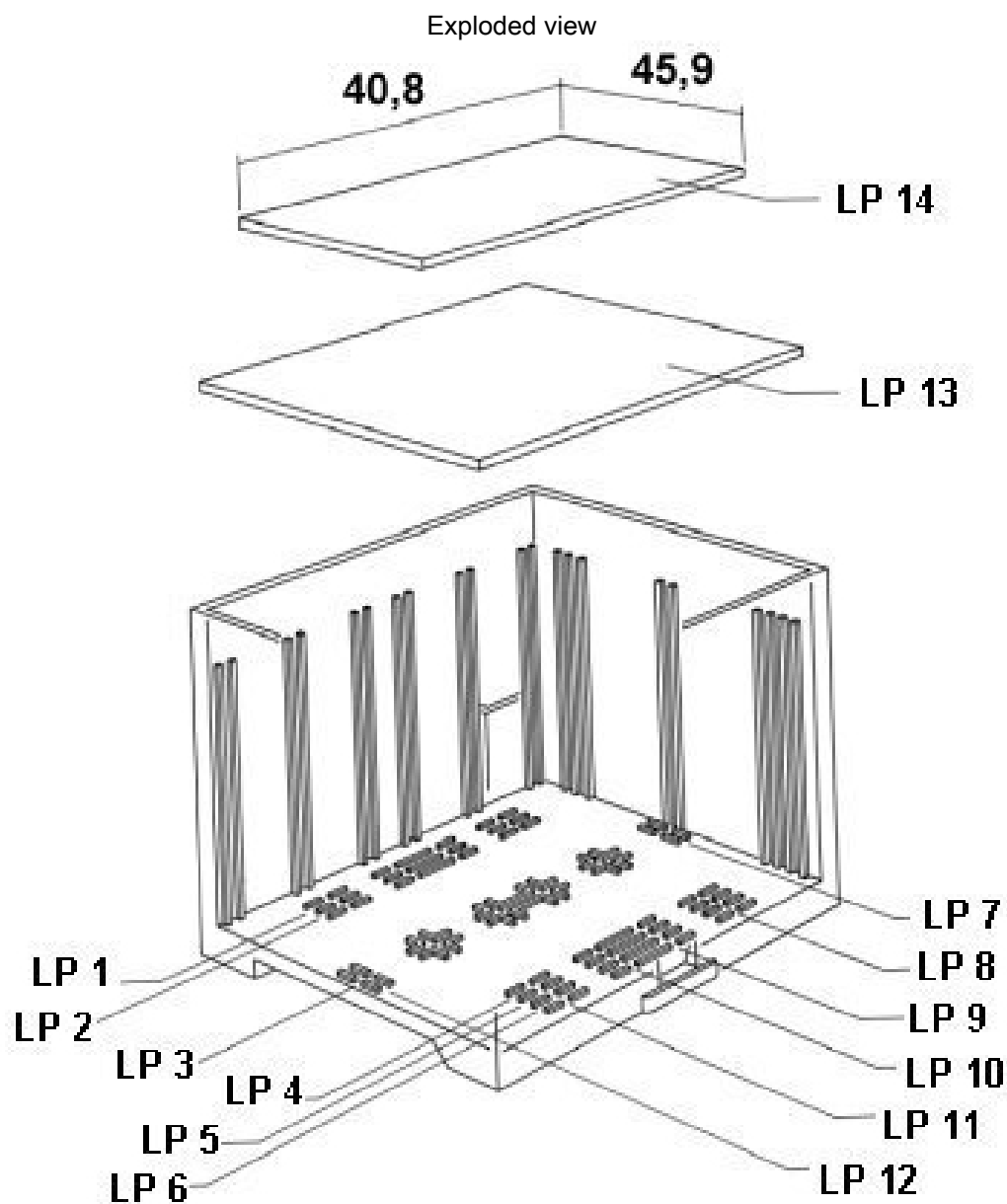


valid for PCB 13

EG 45-GMF/PC GN - Mounting base housing

2764849

<https://www.phoenixcontact.com/us/products/2764849>



valid for PCB 14

EG 45-GMF/PC GN - Mounting base housing



2764849

<https://www.phoenixcontact.com/us/products/2764849>

Approvals

🔗 To download certificates, visit the product detail page: <https://www.phoenixcontact.com/us/products/2764849>



UL Recognized

Approval ID: E240868

EG 45-GMF/PC GN - Mounting base housing



2764849

<https://www.phoenixcontact.com/us/products/2764849>

Classifications

ECLASS

| | |
|-------------|----------|
| ECLASS-13.0 | 27190601 |
| ECLASS-15.0 | 27190601 |

ETIM

| | |
|----------|----------|
| ETIM 9.0 | EC002779 |
|----------|----------|

UNSPSC

| | |
|-------------|----------|
| UNSPSC 21.0 | 31261500 |
|-------------|----------|

Environmental product compliance

| | |
|---|--|
| EU RoHS | |
| Fulfills EU RoHS substance requirements | Yes, No exemptions |
| China RoHS | |
| Environment friendly use period (EFUP) | EFUP-E |
| | No hazardous substances above the limits |
| EU REACH SVHC | |
| REACH candidate substance (CAS No.) | No substance above 0.1 wt% |