

DR-S-DB-ORCL - Building management system

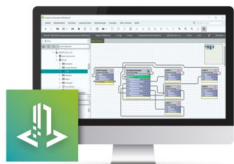


2404172

<https://www.phoenixcontact.com/us/products/2404172>

Please be informed that the data shown in this PDF document is generated from our online catalog. Please find the complete data in the user documentation. Our general terms of use for downloads are valid.

Emalytics Supervisor license for Oracle 11g database driver



Commercial data

Item number	2404172
Packing unit	1 pc
Note	Made to order (non-returnable)
Sales key	DR18
Product key	DRHBAA
GTIN	4055626349220
Weight per piece (including packing)	23.4 g
Weight per piece (excluding packing)	23.4 g
Customs tariff number	49119900
Country of origin	US

Technical data

Product properties

Product type	Building management system
Area of application	Building technology

System properties

Type of software	On-premises
Intended use for the software	Automation

License information

Type of license	Driver license
License duration	not relevant

Functionality

Integrated function	Analysis
	Data acquisition
	Diagnostics
	Startup
	Communication
	Configuration
	Project planning
	Simulation
Target system	Server
Supported controllers	ILC 2050 BI
Number of data points	not relevant
Number of clients	nicht relevant

System requirements

Operating system	Windows® 10
	Windows® 8.1 Enterprise (64-Bit)
	Windows® Server 2012 Standard
	Windows® Server 2012 R2 Standard
Hard disk memory	min. 4 GByte (more recommended depending on the archiving requirements)
Interfaces	1 x Ethernet (10/100 Mbps), RJ45
Languages supported	German, English
Screen resolution	1024 x 768 pixel(s) ,or higher

Classifications

ECLASS

ECLASS-13.0	27242590
ECLASS-15.0	27242590

ETIM

ETIM 9.0	EC001435
----------	----------

UNSPSC

UNSPSC 21.0	43233600
-------------	----------

Environmental product compliance

EU RoHS	
Fulfills EU RoHS substance requirements	Not applicable, No electrical and electronic equipment (EEE), cannot be used in EEE
EU REACH SVHC	
REACH candidate substance (CAS No.)	No substance above 0.1 wt%

Phoenix Contact 2025 © - all rights reserved
<https://www.phoenixcontact.com>

Phoenix Contact USA
586 Fulling Mill Road
Middletown, PA 17057, United States
(+717) 944-1300
info@phoenixcon.com