

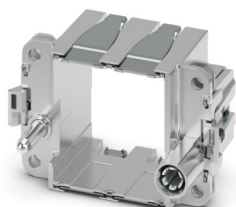
HC-M-B06-MFH-H-CI - Module carrier frame



1721367

<https://www.phoenixcontact.com/us/products/1721367>

Please be informed that the data shown in this PDF document is generated from our online catalog. Please find the complete data in the user documentation. Our general terms of use for downloads are valid.



Module carrier frame, size: B06, type : for the sleeve side (A, B, C, ...), Push-in connection, 0.5 mm² ... 6 mm², application: Module carrier frame

Your advantages

- Significant time savings and improved handling: Consistent and easy tool-free installation and mounting with Push-in connection technology and innovative Click-in latching
- Tool-free installation and mounting of the PE connection with Push-in connection technology
- Shortest installation time compared to other connection technologies
- Quick and effortless wiring, in particular when space is tight
- Secure installation: Audible and tangible latching of the contact inserts in the connector housing
- Reliable connection: The Click-in contact insert latches into the housing creating a shock- and vibration-resistant connection in accordance with DIN EN 61373
- Easy integration: Click-in contact inserts fit in all plastic and metal housings of the HEAVYCON STANDARD and EVO series
- Safe wiring and operation with color-coded actuators
- Shock and vibration-resistant in accordance with DIN EN 61373

Commercial data

Item number	1721367
Packing unit	1 pc
Minimum order quantity	1 pc
Sales key	BF62
Product key	AF7ACD
GTIN	4067923274648
Weight per piece (including packing)	73 g
Weight per piece (excluding packing)	123.6 g
Customs tariff number	85389099
Country of origin	CN

HC-M-B06-MFH-H-CI - Module carrier frame



1721367

<https://www.phoenixcontact.com/us/products/1721367>

Technical data

Notes

General	Connectors may be operated only when there is no load/voltage.
---------	--

Product properties

Product type	Module carrier frame
Series	HC-M-B
	HC-M-02
	HC-M-03
	HC-M-03/04
	HC-M-04
	HC-M-05
	HC-M-06
	HC-M-08
	HC-M-08-GBIT
	HC-M-12
	HC-M-17
	HC-M-20
	HC-M-25
	HC-M-DSUB
	HC-M-EMV
	HC-M-HV
	HC-M-HS
	HC-M-00
Application	Module carrier frame
Type	B6
Number of module slots	2
Frame type	Module carrier frame

Connection data

Conductor connection	
Conductor cross section	0.5 mm ² ... 6 mm ² (for PE conductor)
Stripping length	8 mm ... 10 mm (for PE conductor)

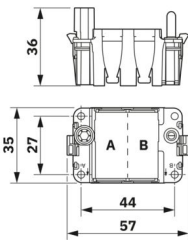
Dimensions

HC-M-B06-MFH-H-CI - Module carrier frame



1721367

<https://www.phoenixcontact.com/us/products/1721367>

Dimensional drawing	
	
Width	34.9 mm
Height	36 mm
Length	51 mm

Material specifications

Contact carrier material	Die-cast zinc alloy
--------------------------	---------------------

Mechanical properties

Mechanical data	
Insertion/withdrawal cycles	≥ 500

Environmental and real-life conditions

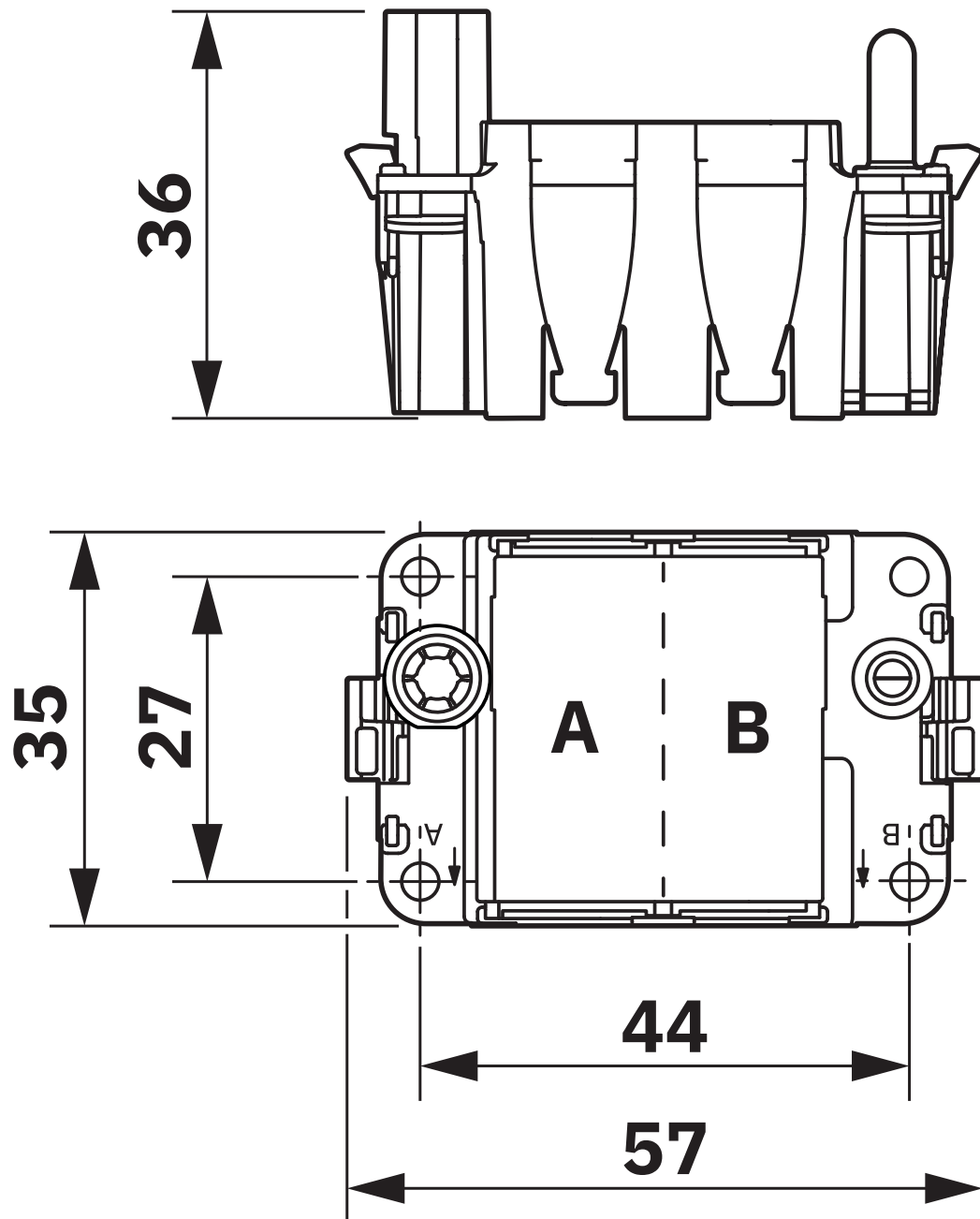
Ambient conditions	
Ambient temperature (operation)	-40 °C ... 125 °C

Mounting

Assembly note	To ensure correct use, installation in housing with IP54 protection or better is required
	tool-free snap-in into all plastic and metal housings of the HEAVYCON STANDARD and EVO series, and into metal housings of the HEAVYCON ADVANCED series

Drawings

Dimensional drawing



Dimensional drawing

HC-M-B06-MFH-H-CI - Module carrier frame



1721367

<https://www.phoenixcontact.com/us/products/1721367>

Classifications

ECLASS

ECLASS-13.0	27440206
ECLASS-15.0	27440206

ETIM

ETIM 9.0	EC002312
----------	----------

UNSPSC

UNSPSC 21.0	31261500
-------------	----------

HC-M-B06-MFH-H-CI - Module carrier frame



1721367

<https://www.phoenixcontact.com/us/products/1721367>

Environmental product compliance

EU RoHS	
Fulfills EU RoHS substance requirements	Yes, No exemptions
China RoHS	
Environment friendly use period (EFUP)	EFUP-E
	No hazardous substances above the limits
EU REACH SVHC	
REACH candidate substance (CAS No.)	No substance above 0.1 wt%

Phoenix Contact 2025 © - all rights reserved
<https://www.phoenixcontact.com>

Phoenix Contact USA
586 Fulling Mill Road
Middletown, PA 17057, United States
(+717) 944-1300
info@phoenixcon.com