

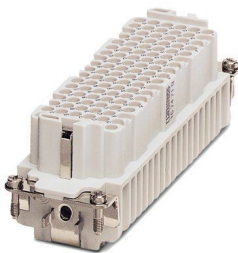
HC-DD 108-EBUC - Contact insert

1674710

<https://www.phoenixcontact.com/us/products/1674710>



Please be informed that the data shown in this PDF document is generated from our online catalog. Please find the complete data in the user documentation. Our general terms of use for downloads are valid.



HEAVYCON female insert, DD108 series, 108-pos., crimp connection

Commercial data

Item number	1674710
Packing unit	1 pc
Note	Made to order (non-returnable)
Sales key	BF61
Product key	AF7ABF
GTIN	4017918144869
Weight per piece (including packing)	107.91 g
Weight per piece (excluding packing)	104.22 g
Customs tariff number	85366990
Country of origin	DE

HC-DD 108-EBUC - Contact insert

1674710

<https://www.phoenixcontact.com/us/products/1674710>



Technical data

Notes

General	For HEAVYCON ADVANCE and HEAVYCON housing of B24 type, crimp contacts CK 1,6-ED (crimp contacts not included in the scope of supply). Plug-in connections may only be operated only when there is no load/voltage.
---------	--

Mounting

Assembly note	-Housing heights with $h \geq 72$ mm are recommended in the case of a large number of wires. -Use of HC-CST (1676857) coding pins and HC-CBU (1676860) coding sockets has been prescribed.
---------------	---

Product properties

Product type	Contact insert with a fixed no. of positions
Type	DD108
Number of positions	108
Connection profile	108+PE

Insulation characteristics

Overvoltage category	III
Degree of pollution	3

Dimensions

Dimensional drawing	
Width	34 mm
Height	36.5 mm
Length	111 mm

Connection data

Connection technology

Connection technology	Crimp connection
Connection in acc. with standard	IEC / EN

Conductor connection

Conductor cross section	0.14 mm ² ... 2.5 mm ²
Connection cross section AWG	26 ... 14
Stripping length of the individual wire	8 mm 6 mm (2.5 mm ²)

Electrical properties

HC-DD 108-EBUC - Contact insert



1674710

<https://www.phoenixcontact.com/us/products/1674710>

Rated voltage (III/3)	250 V
Rated surge voltage	4 kV
Rated current	10 A

Mechanical properties

Mechanical data

Insertion/withdrawal cycles	≥ 500
-----------------------------	-------

Material specifications

Flammability rating according to UL 94	V0
Contact material	Copper alloy
Contact surface material	Ag (alternatively Au)
Contact carrier material	PA

Environmental and real-life conditions

Ambient conditions

Ambient temperature (operation)	-40 °C ... 125 °C (including heating up of contacts)
---------------------------------	--

Standards and regulations

Constructional and testing regulations	DIN VDE 0627/86
	DIN VDE 0110/02.79
	DIN VDE 0110-1/04.97
	IEC 60664-1, DIN IEC 60512
	IEC 60352
Tests	DIN VDE 0627/86
	DIN VDE 0110/02.79
	DIN VDE 0110-1/04.97
	IEC 60664-1, DIN IEC 60512
	IEC 60352

HC-DD 108-EBUC - Contact insert

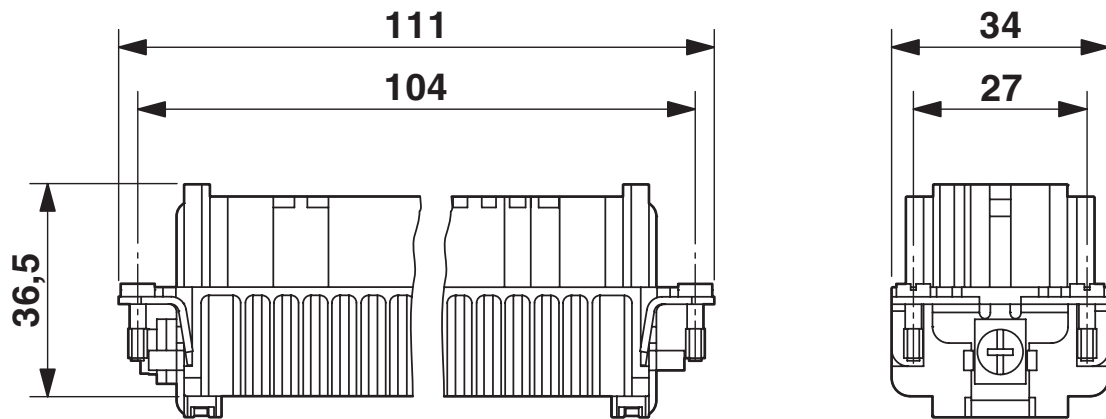
1674710

<https://www.phoenixcontact.com/us/products/1674710>



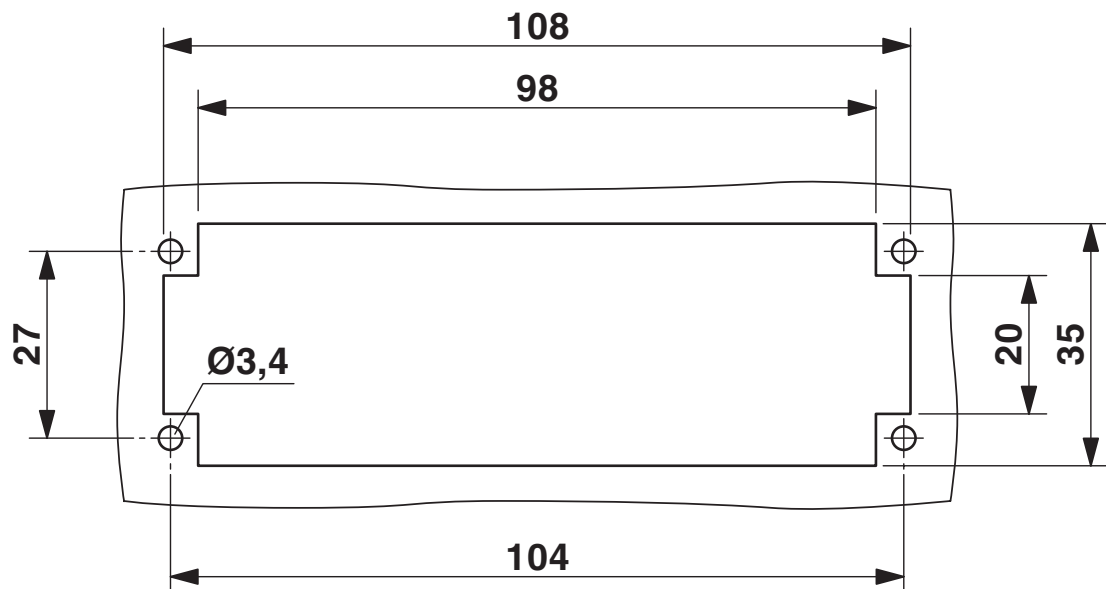
Drawings

Dimensional drawing



Female insert

Dimensional drawing



Mounting cutout

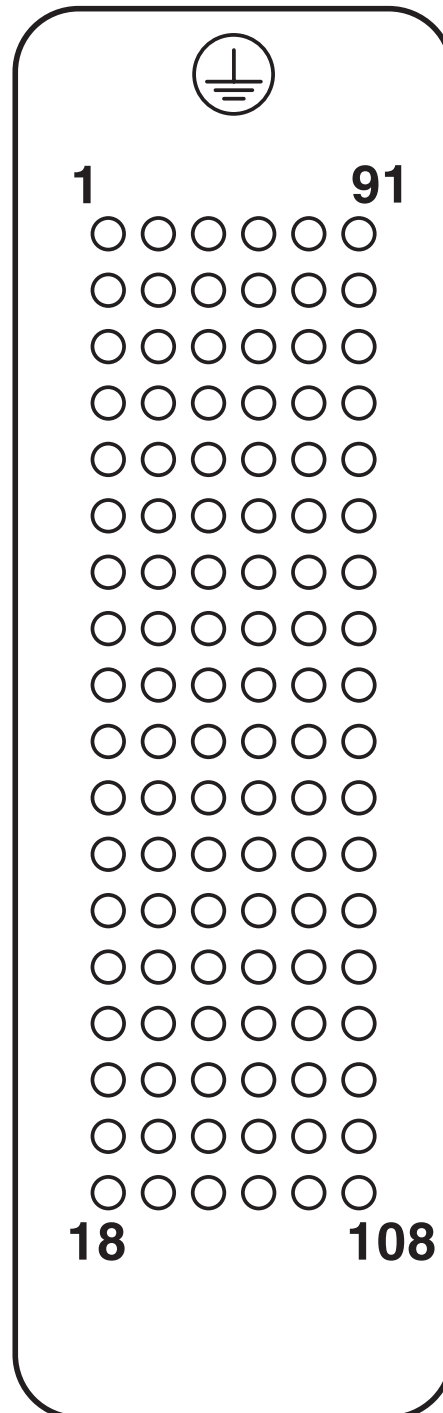
HC-DD 108-EBUC - Contact insert

1674710

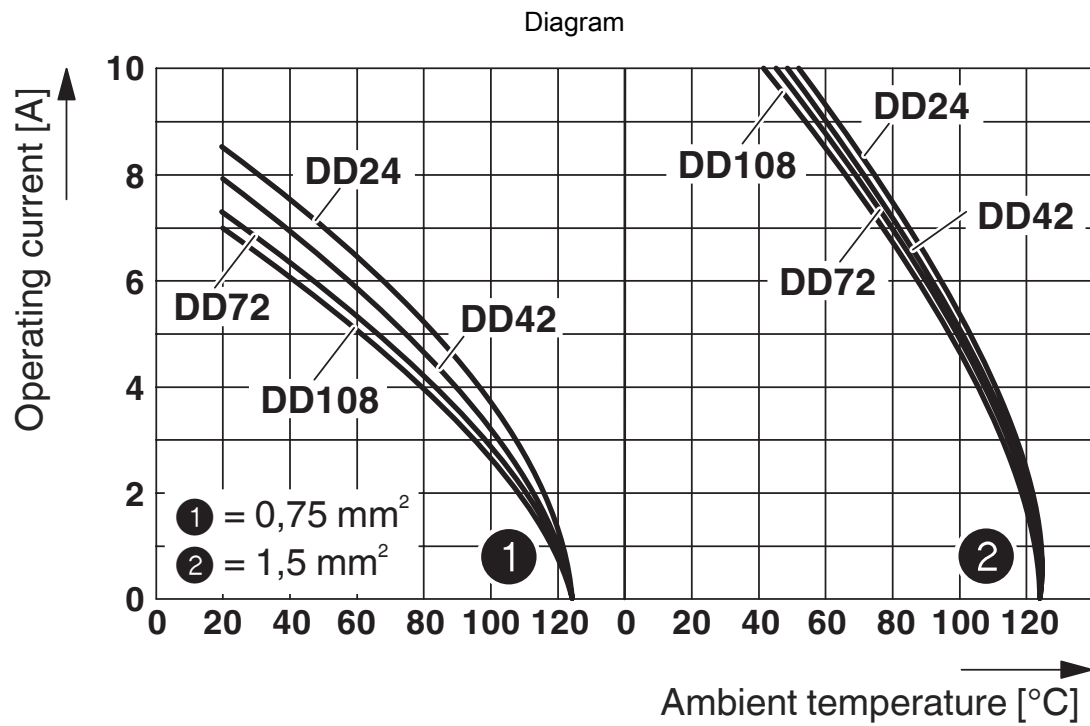
<https://www.phoenixcontact.com/us/products/1674710>



Schematic diagram



Connector pin assignment, connection side



Derating diagram

HC-DD 108-EBUC - Contact insert



1674710

<https://www.phoenixcontact.com/us/products/1674710>

Classifications

ECLASS

ECLASS-13.0	27440205
ECLASS-15.0	27440205

HC-DD 108-EBUC - Contact insert



1674710

<https://www.phoenixcontact.com/us/products/1674710>

Environmental product compliance

EU REACH SVHC

REACH candidate substance (CAS No.)	No substance above 0.1 wt%
-------------------------------------	----------------------------

Phoenix Contact 2025 © - all rights reserved
<https://www.phoenixcontact.com>

Phoenix Contact USA
586 Fulling Mill Road
Middletown, PA 17057, United States
(+717) 944-1300
info@phoenixcon.com