

# RC-12P1N1280EF - Cable connector

1597009

<https://www.phoenixcontact.com/us/products/1597009>



Please be informed that the data shown in this PDF document is generated from our online catalog. Please find the complete data in the user documentation. Our general terms of use for downloads are valid.



M23, Cable connector, straight, Screw locking mechanism, No. of pos.: 12, Direction of rotation: Standard, contact connection type: Pin, Solder cup, cable diameter range: 5.5 mm ... 6.5 mm, coding: N

## Commercial data

Item number	1597009
Packing unit	20 pc
Minimum order quantity	1 pc
Note	Made to order (non-returnable)
Product key	ABRAFA
GTIN	4046356213875
Weight per piece (including packing)	71.69 g
Weight per piece (excluding packing)	71.69 g
Country of origin	DE

# RC-12P1N1280EF - Cable connector

1597009

<https://www.phoenixcontact.com/us/products/1597009>



## Technical data

### Product properties

Product type	Circular connector (cable-side)
--------------	---------------------------------

### Connector

#### Insulating body

Coding	N
Material (Insulating body)	PBT
Material (Contact)	CuZn
Material (Contact surface)	Ni/Au
Insertion/withdrawal cycles	100
Connection method	Solder cup
Contact switching type	Pin
Application	Signal
Number of positions	12
Direction of rotation	Standard
Connection profile	12
Number Contact (Contact group 1)	12
Diameter Contact (Contact group 1)	1 mm
Litz wire cross-section min. Contact (Contact group 1)	0.08 mm <sup>2</sup>
Litz wire cross-section max. Contact (Contact group 1)	1 mm <sup>2</sup>
Rated current Contact (Contact group 1)	8 A (for max. connection cross section)
Rated voltage Contact (Contact group 1)	48 V AC
	74 V DC
Rated surge voltage	1.5 kV
Overvoltage category	III
Degree of pollution	3

#### Housing

Note	Order contact inserts separately
Type	Cable connector housing
Thread type	M23
Design	straight
Type of locking	Screw locking mechanism
Pg screw connection	none
Material (Housing)	Metal
Degree of protection (plugged in)	IP65
	IP67
	IP68

#### Seal

External cable diameter	5.5 mm ... 6.5 mm
Seal material	NBR

# RC-12P1N1280EF - Cable connector

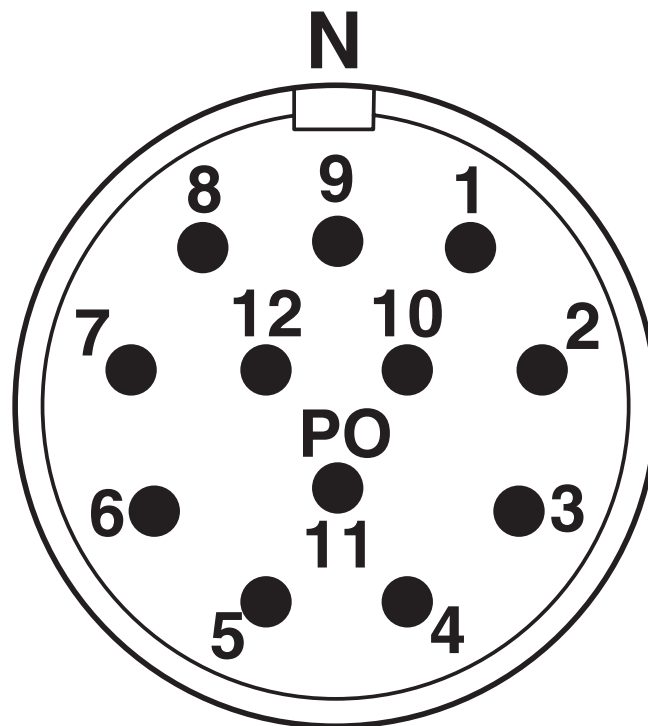
1597009

<https://www.phoenixcontact.com/us/products/1597009>



## Drawings

Schematic diagram



Connector pin assignment

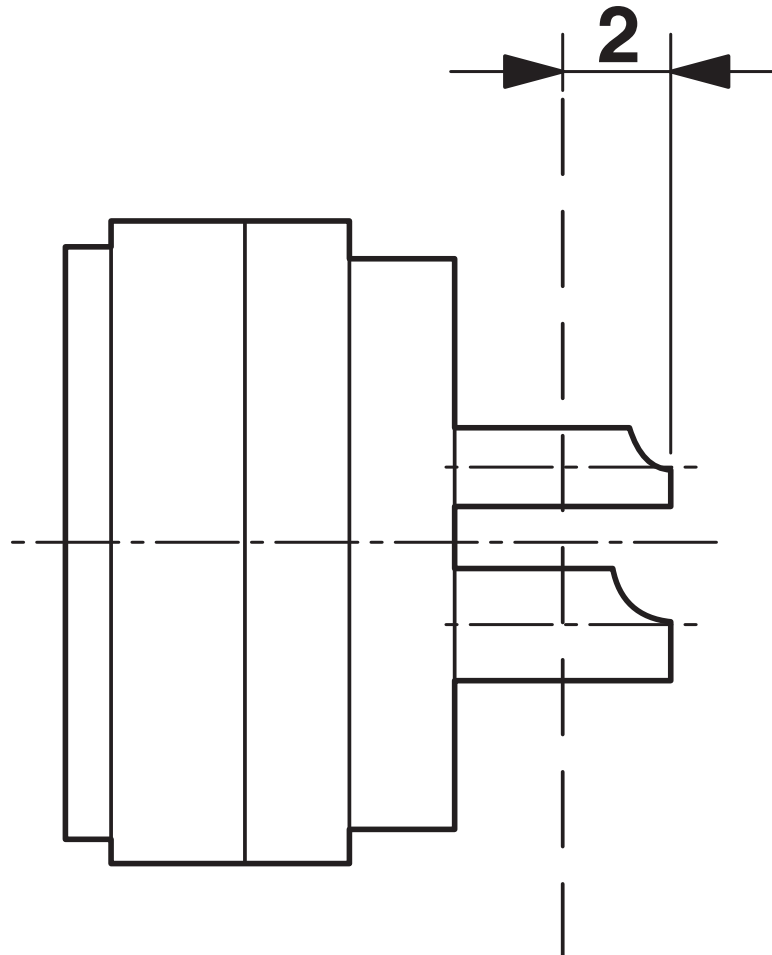
# RC-12P1N1280EF - Cable connector



1597009

<https://www.phoenixcontact.com/us/products/1597009>

Schematic diagram



Dimensional drawing

Phoenix Contact 2025 © - all rights reserved  
<https://www.phoenixcontact.com>

Phoenix Contact USA  
586 Fulling Mill Road  
Middletown, PA 17057, United States  
(+717) 944-1300  
[info@phoenixcon.com](mailto:info@phoenixcon.com)