

Please be informed that the data shown in this PDF document is generated from our online catalog. Please find the complete data in the user documentation. Our general terms of use for downloads are valid.



Printed circuit board terminal, nominal current: 18 A, rated voltage (III/2): 300 V, nominal cross section: 2.5 mm², number of potentials: 4, number of rows: 1, number of positions per row: 4, product range: ICC...TP2,5/..R5,0, pitch: 5 mm, connection method: Push-in spring connection, mounting: Wave soldering, conductor/PCB connection direction: 0 °, color: light gray, Pin layout: Linear pinning, Solder pin [P]: 3.15 mm, number of solder pins per potential: 1, type of packaging: packed in cardboard. Product with pin output on right side

Your advantages

- Orthogonal alignment of the terminal block with the PCB for optimum accessibility in DIN-rail-mounted devices
- Push-in technology for quick and easy wiring
- Fixed wiring and a reduced number of individual parts
- Choice between different pitches
- Intuitive operation due to color-coded actuating push button

Commercial data

Item number	1474491
Packing unit	50 pc
Minimum order quantity	50 pc
Sales key	AC08
Product key	ACHAFA
GTIN	4063151885991
Weight per piece (including packing)	7.24 g
Weight per piece (excluding packing)	5.88 g
Customs tariff number	85369010
Country of origin	PL

ICC25-TP2,5/4R5,0-7035 - PCB terminal block



1474491

<https://www.phoenixcontact.com/us/products/1474491>

Technical data

Product properties

Product type	Printed circuit board terminal
Product family	ICC...-TP2,5/...R5,0
Product line	COMBICON Terminals M
Number of positions	4
Pitch	5 mm
Number of connections	4
Number of rows	1
Number of potentials	4
Pin layout	Linear pinning
Solder pins per potential	1

Electrical properties

Properties

Nominal current I_N	18 A
Nominal voltage U_N	300 V
Rated voltage (III/3)	250 V
Rated surge voltage (III/3)	4 kV
Rated voltage (III/2)	300 V
Rated surge voltage (III/2)	4 kV
Rated voltage (II/2)	600 V
Rated surge voltage (II/2)	4 kV

Connection data

Connection technology

Nominal cross section	2.5 mm ²
-----------------------	---------------------

Interlock

Locking type	without
--------------	---------

Conductor connection

Connection method	Push-in spring connection
Conductor cross-section rigid	0.2 mm ² ... 2.5 mm ²
Conductor cross-section flexible	0.2 mm ² ... 2.5 mm ²
Conductor cross-section AWG	24 ... 14
Conductor cross-section flexible, with ferrule without plastic sleeve	0.25 mm ² ... 2.5 mm ²
Conductor cross-section, flexible, with ferrule, with plastic sleeve	0.25 mm ² ... 2.5 mm ²
2 conductors with the same cross section, flexible, with TWIN ferrule with plastic sleeve	0.5 mm ² ... 1.5 mm ²
Stripping length	10 mm

ICC25-TP2,5/4R5,0-7035 - PCB terminal block



1474491

<https://www.phoenixcontact.com/us/products/1474491>

Mounting

Mounting type	Wave soldering
Pin layout	Linear pinning

Processing notes

Process	Wave soldering
---------	----------------

Material specifications

Material data - contact

Note	WEEE/RoHS-compliant, free of whiskers according to IEC 60068-2-82/JEDEC JESD 201
Contact material	Cu alloy
Surface characteristics	Tin-plated
Metal surface terminal point (top layer)	Tin (Sn)
Metal surface terminal point (middle layer)	Nickel (1.3 - 3 µm Ni)
Metal surface contact area (top layer)	Tin (Sn)
Metal surface contact area (middle layer)	Nickel (1.3 - 3 µm Ni)
Metal surface soldering area (top layer)	Tin (Sn)
Metal surface soldering area (middle layer)	Nickel (Ni)

Material data - housing

Color (Housing)	light gray (7035)
Insulating material	PA
Insulating material group	I
CTI according to IEC 60112	600
Flammability rating according to UL 94	V0
Glow wire flammability index GWFI according to EN 60695-2-12	850
Glow wire ignition temperature GWIT according to EN 60695-2-13	775
Temperature for the ball pressure test according to EN 60695-10-2	125 °C

Material data – actuating element

Color (Actuating element)	orange (2003)
Insulating material	PBT GF
Insulating material group	IIIa
CTI according to IEC 60112	275
Flammability rating according to UL 94	V0

Notes

Recommendation	Further information and detailed dimensions are available in the download area.
General	We recommend using a soldering frame.

Dimensions

Pitch	5 mm
-------	------

ICC25-TP2,5/4R5,0-7035 - PCB terminal block



1474491

<https://www.phoenixcontact.com/us/products/1474491>

Width [w]	25 mm
Height [h]	22.4 mm
Length [l]	23.05 mm
Solder pin length [P]	3.15 mm
Pin dimensions	0.8 x 1 mm

PCB design

Hole diameter	1.4 mm
---------------	--------

Mechanical tests

Test for conductor damage and slackening

Specification	IEC 60999-1:1999-11
Result	Test passed

Repeated connection and disconnection

Specification	IEC 60999-1:1999-11
Result	Test passed

Pull-out test

Specification	IEC 60999-1:1999-11
Conductor cross-section/conductor type/tractive force setpoint/actual value	0.2 mm ² / solid / > 10 N
	0.2 mm ² / flexible / > 10 N
	2.5 mm ² / solid / > 50 N
	2.5 mm ² / flexible / > 50 N

Electrical tests

Temperature-rise test

Specification	IEC 60947-7-4:2019-01
Requirement temperature-rise test	The sum of ambient temperature and temperature rise of the PCB terminal block shall not exceed the upper limiting temperature.

Short-time withstand current

Specification	IEC 60947-7-4:2019-01
---------------	-----------------------

Insulation resistance

Specification	IEC 60512-3-1:2002-02
Insulation resistance, neighboring positions	> 5 MΩ

Temperature cycles

Specification	IEC 60999-1:1999-11
Result	Test passed

Air clearances and creepage distances |

Specification	IEC 60947-1:2007-06 + A1:2010-12 + A2:2014-09
Insulating material group	I
Comparative tracking index (IEC 60112)	CTI 600

ICC25-TP2,5/4R5,0-7035 - PCB terminal block



1474491

<https://www.phoenixcontact.com/us/products/1474491>

Rated insulation voltage (III/3)	250 V
Rated surge voltage (III/3)	4 kV
minimum clearance value - non-homogenous field (III/3)	3 mm
minimum creepage distance (III/3)	3.2 mm
Rated insulation voltage (III/2)	300 V
Rated surge voltage (III/2)	4 kV
minimum clearance value - non-homogenous field (III/2)	3 mm
minimum creepage distance (III/2)	1.6 mm
Rated insulation voltage (II/2)	600 V
Rated surge voltage (II/2)	4 kV
minimum clearance value - non-homogenous field (II/2)	3 mm
minimum creepage distance (II/2)	3.2 mm

Environmental and real-life conditions

Vibration test

Specification	IEC 60068-2-6:2007-12
Frequency	10 - 150 - 10 Hz
Sweep speed	1 octave/min
Amplitude	0.35 mm (10 Hz ... 60.1 Hz)
Acceleration	20 m/s ² (60.1 Hz ... 150 Hz)
Test duration per axis	2.5 h
Test directions	X-, Y- and Z-axis

Glow-wire test

Specification	IEC 60695-2-10:2013-04
Temperature	850 °C
Time of exposure	5 s

Aging

Specification	IEC 60947-7-4:2019-01
---------------	-----------------------

Ambient conditions

Ambient temperature (operation)	-40 °C ... 105 °C (Depending on the current carrying capacity/derating curve)
Ambient temperature (storage/transport)	-40 °C ... 55 °C
Relative humidity (storage/transport)	30 % ... 70 %
Ambient temperature (assembly)	-5 °C ... 100 °C

Packaging specifications

Type of packaging	packed in cardboard
-------------------	---------------------

ICC25-TP2,5/4R5,0-7035 - PCB terminal block

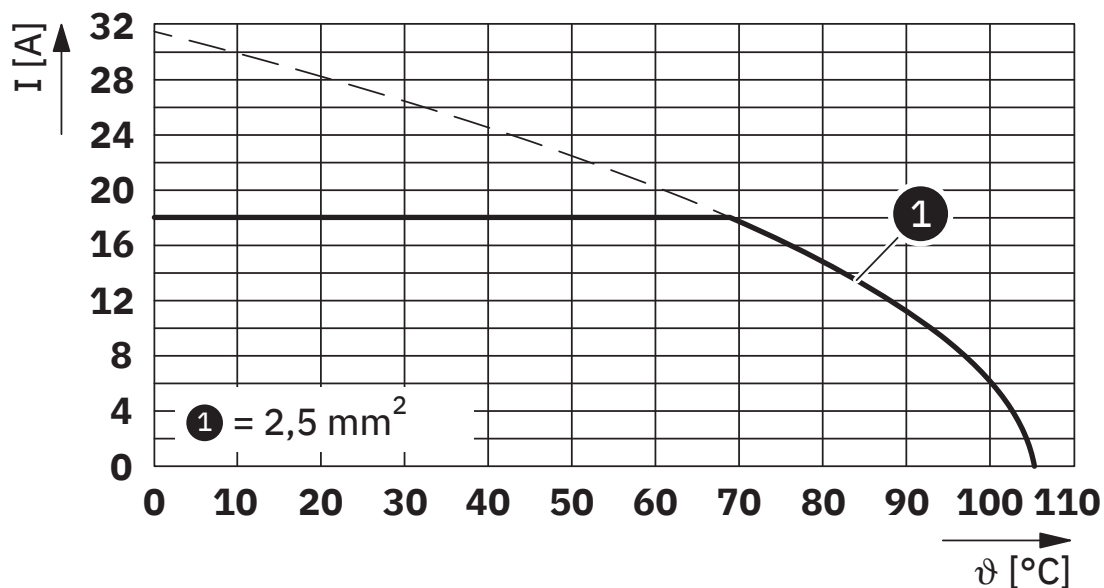


1474491

<https://www.phoenixcontact.com/us/products/1474491>

Drawings

Diagram



Type: ICC...-TP2,5/...

ICC25-TP2,5/4R5,0-7035 - PCB terminal block



1474491

<https://www.phoenixcontact.com/us/products/1474491>

Classifications

ECLASS

ECLASS-13.0	27460101
ECLASS-15.0	27460101

ETIM

ETIM 9.0	EC002643
----------	----------

Environmental product compliance

EU RoHS	
Fulfills EU RoHS substance requirements	Yes, No exemptions
China RoHS	
Environment friendly use period (EFUP)	EFUP-E
	No hazardous substances above the limits
EU REACH SVHC	
REACH candidate substance (CAS No.)	No substance above 0.1 wt%

ICC25-TP2,5/4R5,0-7035 - PCB terminal block



1474491

<https://www.phoenixcontact.com/us/products/1474491>

Accessories

ICS-FE-CONTACT - Functional ground contact

2203904

<https://www.phoenixcontact.com/us/products/2203904>

Functional ground contact, for ICS series electronics housings

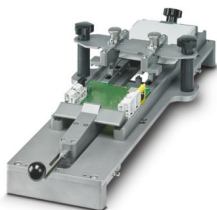


ICS MOUNTING DEVICE - Assembly tool

1118354

<https://www.phoenixcontact.com/us/products/1118354>

Equipment for fast, serial-production attachment of printed circuit boards in ICS 20 and ICS 25 housings



ICC25-TP2,5/4R5,0-7035 - PCB terminal block



1474491

<https://www.phoenixcontact.com/us/products/1474491>

ICS25-B77X75-O-5015 - Mounting base housing

1072454

<https://www.phoenixcontact.com/us/products/1072454>



DIN rail housing, Lower housing part with metal foot catch, width: 25 mm, height: 77.5 mm, depth: 85.8 mm, color: blue (similar RAL 5015), cross connection: DIN rail bus connector (optional), number of positions cross connector: 8

ICS25-B77X75-O-9005 - Mounting base housing

1072560

<https://www.phoenixcontact.com/us/products/1072560>



DIN rail housing, Lower housing part with metal foot catch, width: 25 mm, height: 77.5 mm, depth: 85.8 mm, color: black (similar RAL 9005), cross connection: DIN rail bus connector (optional), number of positions cross connector: 8

ICC25-TP2,5/4R5,0-7035 - PCB terminal block



1474491

<https://www.phoenixcontact.com/us/products/1474491>

ICS25-B77X75-O-7035 - Mounting base housing

2203876

<https://www.phoenixcontact.com/us/products/2203876>



DIN rail housing, Lower housing part with metal foot catch, width: 25 mm, height: 77.5 mm, depth: 85.8 mm, color: light gray (similar RAL 7035), cross connection: DIN rail bus connector (optional), number of positions cross connector: 8

ICS25-B100X98-V-9005 - Mounting base housing

1072534

<https://www.phoenixcontact.com/us/products/1072534>



DIN rail housing, Lower housing part with metal foot catch, Level 1: with vents, width: 25 mm, height: 100 mm, depth: 108.35 mm, color: black (similar RAL 9005), cross connection: DIN rail bus connector (optional), number of positions cross connector: 8

ICC25-TP2,5/4R5,0-7035 - PCB terminal block



1474491

<https://www.phoenixcontact.com/us/products/1474491>

ICS25-B100X98-V-7035 - Mounting base housing

2203881

<https://www.phoenixcontact.com/us/products/2203881>



DIN rail housing, Lower housing part with metal foot catch, Level 1: with vents, width: 25 mm, height: 100 mm, depth: 108.35 mm, color: light gray (similar RAL 7035), cross connection: DIN rail bus connector (optional), number of positions cross connector: 8

ICS25-B100X98-V-5015 - Mounting base housing

1072379

<https://www.phoenixcontact.com/us/products/1072379>



DIN rail housing, Lower housing part with metal foot catch, Level 1: with vents, width: 25 mm, height: 100 mm, depth: 108.35 mm, color: blue (similar RAL 5015), cross connection: DIN rail bus connector (optional), number of positions cross connector: 8

ICC25-TP2,5/4R5,0-7035 - PCB terminal block



1474491

<https://www.phoenixcontact.com/us/products/1474491>

ICS25-B100X98-V-1018 - Mounting base housing

1091366

<https://www.phoenixcontact.com/us/products/1091366>



DIN rail housing, Lower housing part with metal foot catch, Level 1: with vents, width: 25 mm, height: 100 mm, depth: 108.35 mm, color: yellow (similar RAL 1018), cross connection: DIN rail bus connector (optional), number of positions cross connector: 8

ICS25-B100X98-O-9005 - Mounting base housing

1105223

<https://www.phoenixcontact.com/us/products/1105223>



DIN rail housing, Lower housing part with metal foot catch, width: 25 mm, height: 100 mm, depth: 108.35 mm, color: black (similar RAL 9005), cross connection: DIN rail bus connector (optional), number of positions cross connector: 8

ICC25-TP2,5/4R5,0-7035 - PCB terminal block



1474491

<https://www.phoenixcontact.com/us/products/1474491>

ICS25-B100X98-O-7035 - Mounting base housing

1105221

<https://www.phoenixcontact.com/us/products/1105221>



DIN rail housing, Lower housing part with metal foot catch, width: 25 mm, height: 100 mm, depth: 108.35 mm, color: light gray (similar RAL 7035), cross connection: DIN rail bus connector (optional), number of positions cross connector: 8

ICS25-B100X120-V-9005 - Mounting base housing

1072527

<https://www.phoenixcontact.com/us/products/1072527>



DIN rail housing, Lower housing part with metal foot catch, Level 1: with vents, width: 25 mm, height: 100 mm, depth: 130.9 mm, color: black (similar RAL 9005), cross connection: DIN rail bus connector (optional), number of positions cross connector: 8

ICC25-TP2,5/4R5,0-7035 - PCB terminal block



1474491

<https://www.phoenixcontact.com/us/products/1474491>

ICS25-B100X120-V-7035 - Mounting base housing

2203884

<https://www.phoenixcontact.com/us/products/2203884>



DIN rail housing, Lower housing part with metal foot catch, Level 1: with vents, width: 25 mm, height: 100 mm, depth: 130.9 mm, color: light gray (similar RAL 7035), cross connection: DIN rail bus connector (optional), number of positions cross connector: 8

ICS25-B100X120-O-9005 - Mounting base housing

1355951

<https://www.phoenixcontact.com/us/products/1355951>



DIN rail housing, Lower housing part with metal foot catch, width: 25 mm, height: 100 mm, depth: 130.9 mm, color: black (similar RAL 9005), cross connection: DIN rail bus connector (optional), number of positions cross connector: 8

ICC25-TP2,5/4R5,0-7035 - PCB terminal block



1474491

<https://www.phoenixcontact.com/us/products/1474491>

ICS25-B100X120-O-7035 - Mounting base housing

1355945

<https://www.phoenixcontact.com/us/products/1355945>



DIN rail housing, Lower housing part with metal foot catch, width: 25 mm, height: 100 mm, depth: 130.9 mm, color: light gray (similar RAL 7035), cross connection: DIN rail bus connector (optional), number of positions cross connector: 8

ICS25-B100X120-O-5015 - Mounting base housing

1355948

<https://www.phoenixcontact.com/us/products/1355948>



DIN rail housing, Lower housing part with metal foot catch, width: 25 mm, height: 100 mm, depth: 130.9 mm, color: blue (similar RAL 5015), cross connection: DIN rail bus connector (optional), number of positions cross connector: 8

ICC25-TP2,5/4R5,0-7035 - PCB terminal block



1474491

<https://www.phoenixcontact.com/us/products/1474491>

ICS25-B100X120-O-1018 - Mounting base housing

1355954

<https://www.phoenixcontact.com/us/products/1355954>

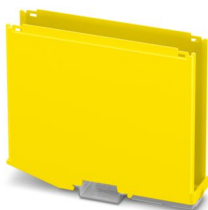


DIN rail housing, Lower housing part with metal foot catch, width: 25 mm, height: 100 mm, depth: 130.9 mm, color: yellow (similar RAL 1018), cross connection: DIN rail bus connector (optional), number of positions cross connector: 8

ICS25-B122X98-O-1018 - Mounting base housing

1355955

<https://www.phoenixcontact.com/us/products/1355955>



DIN rail housing, Lower housing part with metal foot catch, width: 25 mm, height: 122.5 mm, depth: 108.35 mm, color: yellow (similar RAL 1018), cross connection: DIN rail bus connector (optional), number of positions cross connector: 8

ICC25-TP2,5/4R5,0-7035 - PCB terminal block



1474491

<https://www.phoenixcontact.com/us/products/1474491>

ICS25-B122X98-O-5015 - Mounting base housing

1355949

<https://www.phoenixcontact.com/us/products/1355949>



DIN rail housing, Lower housing part with metal foot catch, width: 25 mm, height: 122.5 mm, depth: 108.35 mm, color: blue (similar RAL 5015), cross connection: DIN rail bus connector (optional), number of positions cross connector: 8

ICS25-B122X98-O-7035 - Mounting base housing

1355946

<https://www.phoenixcontact.com/us/products/1355946>



DIN rail housing, Lower housing part with metal foot catch, width: 25 mm, height: 122.5 mm, depth: 108.35 mm, color: light gray (similar RAL 7035), cross connection: DIN rail bus connector (optional), number of positions cross connector: 8

ICC25-TP2,5/4R5,0-7035 - PCB terminal block



1474491

<https://www.phoenixcontact.com/us/products/1474491>

ICS25-B122X98-O-9005 - Mounting base housing

1355952

<https://www.phoenixcontact.com/us/products/1355952>



DIN rail housing, Lower housing part with metal foot catch, width: 25 mm, height: 122.5 mm, depth: 108.35 mm, color: light gray (similar RAL 7035), cross connection: DIN rail bus connector (optional), number of positions cross connector: 8

ICS25-B122X98-V-5015 - Mounting base housing

1072372

<https://www.phoenixcontact.com/us/products/1072372>



DIN rail housing, Lower housing part with metal foot catch, Level 1: with vents, width: 25 mm, height: 122.5 mm, depth: 108.35 mm, color: blue (similar RAL 5015), cross connection: DIN rail bus connector (optional), number of positions cross connector: 8

ICC25-TP2,5/4R5,0-7035 - PCB terminal block



1474491

<https://www.phoenixcontact.com/us/products/1474491>

ICS25-B122X98-V-7035 - Mounting base housing

2203885

<https://www.phoenixcontact.com/us/products/2203885>



DIN rail housing, Lower housing part with metal foot catch, Level 1: with vents, width: 25 mm, height: 122.5 mm, depth: 108.35 mm, color: light gray (similar RAL 7035), cross connection: DIN rail bus connector (optional), number of positions cross connector: 8

ICS25-B122X98-V-9005 - Mounting base housing

1072526

<https://www.phoenixcontact.com/us/products/1072526>



DIN rail housing, Lower housing part with metal foot catch, Level 1: with vents, width: 25 mm, height: 122.5 mm, depth: 108.35 mm, color: black (similar RAL 9005), cross connection: DIN rail bus connector (optional), number of positions cross connector: 8

ICC25-TP2,5/4R5,0-7035 - PCB terminal block



1474491

<https://www.phoenixcontact.com/us/products/1474491>

ICS50-B100X98-O-O-5015 - Mounting base housing

1118656

<https://www.phoenixcontact.com/us/products/1118656>



DIN rail housing, Lower housing part with metal foot catch, width: 50.1 mm, height: 100 mm, depth: 108.35 mm, color: blue (similar RAL 5015), cross connection: DIN rail bus connector (optional), number of positions cross connector: 8

ICS50-B100X98-O-O-7035 - Mounting base housing

1118644

<https://www.phoenixcontact.com/us/products/1118644>



DIN rail housing, Lower housing part with metal foot catch, width: 50.1 mm, height: 100 mm, depth: 108.35 mm, color: light gray (similar RAL 7035), cross connection: DIN rail bus connector (optional), number of positions cross connector: 8

ICC25-TP2,5/4R5,0-7035 - PCB terminal block



1474491

<https://www.phoenixcontact.com/us/products/1474491>

ICS50-B100X98-O-O-9005 - Mounting base housing

1118654

<https://www.phoenixcontact.com/us/products/1118654>



DIN rail housing, Lower housing part with metal foot catch, width: 50.1 mm, height: 100 mm, depth: 108.35 mm, color: black (similar RAL 9005), cross connection: DIN rail bus connector (optional), number of positions cross connector: 8

ICS50-B100X98-V-V-1018 - Mounting base housing

1305039

<https://www.phoenixcontact.com/us/products/1305039>



DIN rail housing, Lower housing part with metal foot catch, Level 1: with vents, width: 50.1 mm, height: 100 mm, depth: 108.35 mm, color: yellow (similar RAL 1018), cross connection: DIN rail bus connector (optional), number of positions cross connector: 8

ICC25-TP2,5/4R5,0-7035 - PCB terminal block



1474491

<https://www.phoenixcontact.com/us/products/1474491>

ICS50-B100X98-V-V-5015 - Mounting base housing

1076921

<https://www.phoenixcontact.com/us/products/1076921>



DIN rail housing, Lower housing part with metal foot catch, Level 1: with vents, width: 50.1 mm, height: 100 mm, depth: 108.35 mm, color: blue (similar RAL 5015), cross connection: DIN rail bus connector (optional), number of positions cross connector: 8

ICS50-B100X98-V-V-7035 - Mounting base housing

1076998

<https://www.phoenixcontact.com/us/products/1076998>



DIN rail housing, Lower housing part with metal foot catch, Level 1: with vents, width: 50.1 mm, height: 100 mm, depth: 108.35 mm, color: light gray (similar RAL 7035), cross connection: DIN rail bus connector (optional), number of positions cross connector: 8

ICC25-TP2,5/4R5,0-7035 - PCB terminal block



1474491

<https://www.phoenixcontact.com/us/products/1474491>

ICS50-B100X98-V-V-9005 - Mounting base housing

1076893

<https://www.phoenixcontact.com/us/products/1076893>



DIN rail housing, Lower housing part with metal foot catch, Level 1: with vents, width: 50.1 mm, height: 100 mm, depth: 108.35 mm, color: black (similar RAL 9005), cross connection: DIN rail bus connector (optional), number of positions cross connector: 8

ICS50-B122X98-O-O-5015 - Mounting base housing

1118652

<https://www.phoenixcontact.com/us/products/1118652>



DIN rail housing, Lower housing part with metal foot catch, width: 50.1 mm, height: 122.5 mm, depth: 108.35 mm, color: blue (similar RAL 5015), cross connection: DIN rail bus connector (optional), number of positions cross connector: 8

ICC25-TP2,5/4R5,0-7035 - PCB terminal block



1474491

<https://www.phoenixcontact.com/us/products/1474491>

ICS50-B122X98-O-O-7035 - Mounting base housing

1118647

<https://www.phoenixcontact.com/us/products/1118647>



DIN rail housing, Lower housing part with metal foot catch, width: 50.1 mm, height: 122.5 mm, depth: 108.35 mm, color: light gray (similar RAL 7035), cross connection: DIN rail bus connector (optional), number of positions cross connector: 8

ICS50-B122X98-O-O-9005 - Mounting base housing

1118643

<https://www.phoenixcontact.com/us/products/1118643>



DIN rail housing, Lower housing part with metal foot catch, width: 50.1 mm, height: 122.5 mm, depth: 108.35 mm, color: black (similar RAL 9005), cross connection: DIN rail bus connector (optional), number of positions cross connector: 8

ICC25-TP2,5/4R5,0-7035 - PCB terminal block



1474491

<https://www.phoenixcontact.com/us/products/1474491>

ICS50-B122X98-V-V-5015 - Mounting base housing

1076907

<https://www.phoenixcontact.com/us/products/1076907>



DIN rail housing, Lower housing part with metal foot catch, Level 1: with vents, width: 50.1 mm, height: 122.5 mm, depth: 108.35 mm, color: blue (similar RAL 5015), cross connection: DIN rail bus connector (optional), number of positions cross connector: 8

ICS50-B122X98-V-V-7035 - Mounting base housing

1077064

<https://www.phoenixcontact.com/us/products/1077064>



DIN rail housing, Lower housing part with metal foot catch, Level 1: with vents, width: 50.1 mm, height: 122.5 mm, depth: 108.35 mm, color: light gray (similar RAL 7035), cross connection: DIN rail bus connector (optional), number of positions cross connector: 8

ICC25-TP2,5/4R5,0-7035 - PCB terminal block



1474491

<https://www.phoenixcontact.com/us/products/1474491>

ICS50-B122X98-V-V-9005 - Mounting base housing

1076880

<https://www.phoenixcontact.com/us/products/1076880>



DIN rail housing, Lower housing part with metal foot catch, Level 1: with vents, width: 50.1 mm, height: 122.5 mm, depth: 108.35 mm, color: black (similar RAL 9005), cross connection: DIN rail bus connector (optional), number of positions cross connector: 8

ICS25-TL77X12-7035 - Upper housing part

1019570

<https://www.phoenixcontact.com/us/products/1019570>



DIN rail housing, Upper part, with transparent hinged cover, Housing cover, width: 25 mm, height: 78.5 mm, depth: 14.35 mm, color: light gray (similar RAL 7035)

ICC25-TP2,5/4R5,0-7035 - PCB terminal block



1474491

<https://www.phoenixcontact.com/us/products/1474491>

ICS25-C77X12-7035 - Upper housing part

1019703

<https://www.phoenixcontact.com/us/products/1019703>

DIN rail housing, Upper part, closed, Housing cover, width: 25 mm, height: 77.5 mm, depth: 14.35 mm, color: light gray (similar RAL 7035)

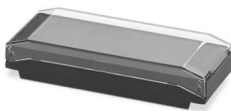


ICS25-TL77X12-9005 - Upper housing part

1072555

<https://www.phoenixcontact.com/us/products/1072555>

DIN rail housing, Upper part, with transparent hinged cover, Housing cover, width: 25 mm, height: 78.5 mm, depth: 14.35 mm, color: black (similar RAL 9005)



ICC25-TP2,5/4R5,0-7035 - PCB terminal block



1474491

<https://www.phoenixcontact.com/us/products/1474491>

ICS25-C77X12-9005 - Upper housing part

1072559

<https://www.phoenixcontact.com/us/products/1072559>

DIN rail housing, Upper part, closed, Housing cover, width: 25 mm, height: 77.5 mm, depth: 14.35 mm, color: black (similar RAL 9005)



ICS25-TL77X12-5015 - Upper housing part

2203877

<https://www.phoenixcontact.com/us/products/2203877>

DIN rail housing, Upper part, with transparent hinged cover, Housing cover, width: 25 mm, height: 78.5 mm, depth: 14.35 mm, color: blue (similar RAL 5015)



ICC25-TP2,5/4R5,0-7035 - PCB terminal block



1474491

<https://www.phoenixcontact.com/us/products/1474491>

ICS25-C100X12-7035 - Upper housing part

2203882

<https://www.phoenixcontact.com/us/products/2203882>

DIN rail housing, Upper part, closed, Housing cover, width: 25 mm, height: 100 mm, depth: 14.35 mm, color: light gray (similar RAL 7035)



ICS25-C100X12-9005 - Upper housing part

1072531

<https://www.phoenixcontact.com/us/products/1072531>

DIN rail housing, Upper part, closed, Housing cover, width: 25 mm, height: 100 mm, depth: 14.35 mm, color: black (similar RAL 9005)



ICC25-TP2,5/4R5,0-7035 - PCB terminal block



1474491

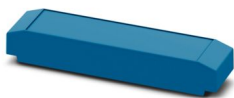
<https://www.phoenixcontact.com/us/products/1474491>

ICS25-C100X12-5015 - Upper housing part

1072378

<https://www.phoenixcontact.com/us/products/1072378>

DIN rail housing, Upper part, closed, Housing cover, width: 25 mm, height: 100 mm, depth: 14.35 mm, color: blue (similar RAL 5015)



ICS25-C100X12-1018 - Upper housing part

1099162

<https://www.phoenixcontact.com/us/products/1099162>

DIN rail housing, Upper part, closed, Housing cover, width: 25 mm, height: 100 mm, depth: 14.35 mm, color: yellow (similar RAL 1018)



ICC25-TP2,5/4R5,0-7035 - PCB terminal block



1474491

<https://www.phoenixcontact.com/us/products/1474491>

ICS25-C100X12-DKP-7035 - Upper housing part with display

1215686

<https://www.phoenixcontact.com/us/products/1215686>

DIN rail housing, Upper part, integrated 0.96" display, resolution: 80 x 160 Pixel(s), interface: 4-wire SPI half duplex, Housing cover, width: 25 mm, height: 100 mm, depth: 14.35 mm



ICS25-C100X12-DKP-9005 - Upper housing part with display

1524410

<https://www.phoenixcontact.com/us/products/1524410>

DIN rail housing, Upper part, integrated 0.96" display, resolution: 80 x 160 Pixel(s), interface: 4-wire SPI half duplex, Housing cover, width: 25 mm, height: 100 mm, depth: 14.35 mm



ICC25-TP2,5/4R5,0-7035 - PCB terminal block



1474491

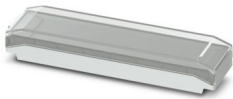
<https://www.phoenixcontact.com/us/products/1474491>

ICS25-TL100X12-7035 - Upper housing part

2203883

<https://www.phoenixcontact.com/us/products/2203883>

DIN rail housing, Upper part, with transparent hinged cover, Housing cover, width: 25 mm, height: 101 mm, depth: 14.35 mm, color: light gray (similar RAL 7035)



ICS25-TL100X12-9005 - Upper housing part

1072528

<https://www.phoenixcontact.com/us/products/1072528>

DIN rail housing, Upper part, with transparent hinged cover, Housing cover, width: 25 mm, height: 101 mm, depth: 14.35 mm, color: black (similar RAL 9005)



ICC25-TP2,5/4R5,0-7035 - PCB terminal block



1474491

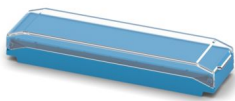
<https://www.phoenixcontact.com/us/products/1474491>

ICS25-TL100X12-5015 - Upper housing part

1072377

<https://www.phoenixcontact.com/us/products/1072377>

DIN rail housing, Upper part, with transparent hinged cover, Housing cover, width: 25 mm, height: 101 mm, depth: 14.35 mm, color: blue (similar RAL 5015)

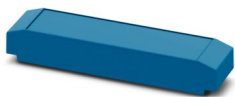


ICS25-C122X12-5015 - Upper housing part

1072375

<https://www.phoenixcontact.com/us/products/1072375>

DIN rail housing, Upper part, closed, Housing cover, width: 25 mm, height: 122.5 mm, depth: 14.35 mm, color: blue (similar RAL 5015)



ICC25-TP2,5/4R5,0-7035 - PCB terminal block



1474491

<https://www.phoenixcontact.com/us/products/1474491>

ICS25-C122X12-9005 - Upper housing part

1072525

<https://www.phoenixcontact.com/us/products/1072525>

DIN rail housing, Upper part, closed, Housing cover, width: 25 mm, height: 122.5 mm, depth: 14.35 mm, color: black (similar RAL 9005)



ICS25-C122X12-DKP-7035 - Upper housing part with display

1215685

<https://www.phoenixcontact.com/us/products/1215685>

DIN rail housing, Upper part, integrated 0.96" display, resolution: 80 x 160 Pixel(s), interface: 4-wire SPI half duplex, Housing cover, width: 25 mm, height: 122 mm



ICC25-TP2,5/4R5,0-7035 - PCB terminal block



1474491

<https://www.phoenixcontact.com/us/products/1474491>

ICS25-C122X12-7035 - Upper housing part

2203886

<https://www.phoenixcontact.com/us/products/2203886>

DIN rail housing, Upper part, closed, Housing cover, width: 25 mm, height: 122.5 mm, depth: 14.35 mm, color: light gray (similar RAL 7035)



ICS25-TL122X12-7035 - Upper housing part

2203887

<https://www.phoenixcontact.com/us/products/2203887>

DIN rail housing, Upper part, with transparent hinged cover, Housing cover, width: 25 mm, height: 123.5 mm, depth: 14.35 mm, color: light gray (similar RAL 7035)



ICC25-TP2,5/4R5,0-7035 - PCB terminal block



1474491

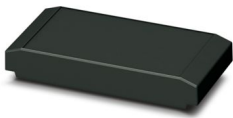
<https://www.phoenixcontact.com/us/products/1474491>

ICS50-C100X12-9005 - Upper housing part

1076892

<https://www.phoenixcontact.com/us/products/1076892>

DIN rail housing, Upper part, closed, Housing cover, width: 50.1 mm, height: 100 mm, depth: 14.35 mm, color: black (similar RAL 9005)



ICS50-C100X12-5015 - Upper housing part

1076919

<https://www.phoenixcontact.com/us/products/1076919>

DIN rail housing, Upper part, closed, Housing cover, width: 50.1 mm, height: 100 mm, depth: 14.35 mm, color: blue (similar RAL 5015)



ICC25-TP2,5/4R5,0-7035 - PCB terminal block



1474491

<https://www.phoenixcontact.com/us/products/1474491>

ICS50-C100X12-7035 - Upper housing part

1076995

<https://www.phoenixcontact.com/us/products/1076995>

DIN rail housing, Upper part, closed, Housing cover, width: 50.1 mm, height: 100 mm, depth: 14.35 mm, color: light gray (similar RAL 7035)



ICS50-C100X12-D2,4-TRG-7035 - Upper housing part with touch display

1077656

<https://www.phoenixcontact.com/us/products/1077656>

DIN rail housing, Upper part, integrated 2.4" resistive touch display, resolution: 320 x 240 Pixel(s), interface: 4-wire SPI half duplex, Housing cover, width: 50.1 mm, height: 100 mm, depth: 14.35 mm



ICC25-TP2,5/4R5,0-7035 - PCB terminal block

1474491

<https://www.phoenixcontact.com/us/products/1474491>



ICS50-C100X12-D2,4-TRG-7035-VPE1 - Upper housing part with touch display

1226370

<https://www.phoenixcontact.com/us/products/1226370>

DIN rail housing, Upper part, integrated 2.4" resistive touch display, resolution: 320 x 240 Pixel(s), interface: 4-wire SPI half duplex, Housing cover, width: 50.1 mm, height: 100 mm, depth: 14.35 mm



ICS50-C100X12-D2,4-TRG-1018 - Upper housing part with touch display

1304990

<https://www.phoenixcontact.com/us/products/1304990>

DIN rail housing, Upper part, integrated 2.4" resistive touch display, resolution: 320 x 240 Pixel(s), interface: 4-wire SPI half duplex, Housing cover, width: 50 mm, height: 100 mm, depth: 12 mm



ICC25-TP2,5/4R5,0-7035 - PCB terminal block



1474491

<https://www.phoenixcontact.com/us/products/1474491>

ICS50-TL100X12-9005 - Upper housing part

1076882

<https://www.phoenixcontact.com/us/products/1076882>

DIN rail housing, Upper part, with transparent hinged cover, Housing cover, width: 50.1 mm, height: 101 mm, depth: 14.35 mm, color: black (similar RAL 9005)



ICS50-TL100X12-5015 - Upper housing part

1076913

<https://www.phoenixcontact.com/us/products/1076913>

DIN rail housing, Upper part, with transparent hinged cover, Housing cover, width: 50.1 mm, height: 101 mm, depth: 14.35 mm, color: blue (similar RAL 5015)



ICC25-TP2,5/4R5,0-7035 - PCB terminal block



1474491

<https://www.phoenixcontact.com/us/products/1474491>

ICS50-TL100X12-7035 - Upper housing part

1076994

<https://www.phoenixcontact.com/us/products/1076994>

DIN rail housing, Upper part, with transparent hinged cover, Housing cover, width: 50.1 mm, height: 101 mm, depth: 14.35 mm, color: light gray (similar RAL 7035)

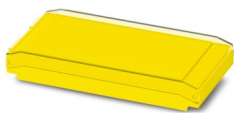


ICS50-TL100X12-1018 - Upper housing part

1308377

<https://www.phoenixcontact.com/us/products/1308377>

DIN rail housing, Upper part, with transparent hinged cover, Housing cover, width: 50 mm, height: 100 mm, depth: 14.35 mm, color: yellow (similar RAL 1018)



ICC25-TP2,5/4R5,0-7035 - PCB terminal block



1474491

<https://www.phoenixcontact.com/us/products/1474491>

ICS50-TL122X12-9005 - Upper housing part

1076870

<https://www.phoenixcontact.com/us/products/1076870>

DIN rail housing, Upper part, with transparent hinged cover, Housing cover, width: 50.1 mm, height: 123.5 mm, depth: 14.35 mm, color: black (similar RAL 9005)



ICS50-C122X12-9005 - Upper housing part

1076876

<https://www.phoenixcontact.com/us/products/1076876>

DIN rail housing, Upper part, closed, Housing cover, width: 50.1 mm, height: 122.5 mm, depth: 14.35 mm, color: black (similar RAL 9005)



ICC25-TP2,5/4R5,0-7035 - PCB terminal block



1474491

<https://www.phoenixcontact.com/us/products/1474491>

ICS50-TL122X12-5015 - Upper housing part

1076903

<https://www.phoenixcontact.com/us/products/1076903>

DIN rail housing, Upper part, with transparent hinged cover, Housing cover, width: 50.1 mm, height: 123.5 mm, depth: 14.35 mm, color: blue (similar RAL 5015)



ICS50-C122X12-5015 - Upper housing part

1076904

<https://www.phoenixcontact.com/us/products/1076904>

DIN rail housing, Upper part, closed, Housing cover, width: 50.1 mm, height: 122.5 mm, depth: 14.35 mm, color: blue (similar RAL 5015)



ICC25-TP2,5/4R5,0-7035 - PCB terminal block



1474491

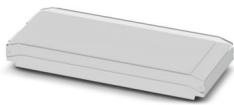
<https://www.phoenixcontact.com/us/products/1474491>

ICS50-TL122X12-7035 - Upper housing part

1076991

<https://www.phoenixcontact.com/us/products/1076991>

DIN rail housing, Upper part, with transparent hinged cover, Housing cover, width: 50.1 mm, height: 123.5 mm, depth: 14.35 mm, color: light gray (similar RAL 7035)



ICS50-C122X12-7035 - Upper housing part

1076992

<https://www.phoenixcontact.com/us/products/1076992>

DIN rail housing, Upper part, closed, Housing cover, width: 50.1 mm, height: 122.5 mm, depth: 14.35 mm, color: light gray (similar RAL 7035)



ICC25-TP2,5/4R5,0-7035 - PCB terminal block



1474491

<https://www.phoenixcontact.com/us/products/1474491>

ICS50-C122X12-D2,4-TRG-7035 - Upper housing part with touch display

1357462

<https://www.phoenixcontact.com/us/products/1357462>

DIN rail housing, Upper part, integrated 2.4" resistive touch display, resolution: 320 x 240 Pixel(s), interface: 4-wire SPI half duplex, Housing cover, width: 50.1 mm, height: 122.5 mm, depth: 14.35 mm



ICS50-C122X12-D2,4-TRG-7035 VPE1 - Upper housing part with touch display

1525286

<https://www.phoenixcontact.com/us/products/1525286>

DIN rail housing, Upper part, integrated 2.4" resistive touch display, resolution: 320 x 240 Pixel(s), interface: 4-wire SPI half duplex, Housing cover, width: 50.1 mm, height: 122.5 mm, depth: 14.35 mm



ICC25-TP2,5/4R5,0-7035 - PCB terminal block



1474491

<https://www.phoenixcontact.com/us/products/1474491>

ICS25-F22A-7035 - Connection plate

2203894

<https://www.phoenixcontact.com/us/products/2203894>

DIN rail housing, ICS filler, with antenna function cutout, width: 25 mm, height: 7.25 mm, depth: 22.4 mm, color: light gray (similar RAL 7035)



ICS25-F22A6-7035 - Connection plate

1287369

<https://www.phoenixcontact.com/us/products/1287369>

DIN rail housing, ICS filler, with antenna function cutout, width: 25 mm, height: 7.25 mm, depth: 22.4 mm, color: light gray (similar RAL 7035)



ICC25-TP2,5/4R5,0-7035 - PCB terminal block



1474491

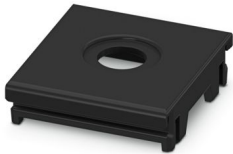
<https://www.phoenixcontact.com/us/products/1474491>

ICS25-F22A6-9005 - Connection plate

1287367

<https://www.phoenixcontact.com/us/products/1287367>

DIN rail housing, ICS filler, with antenna function cutout, width: 25 mm, height: 7.25 mm, depth: 22.4 mm, color: black (similar RAL 9005)

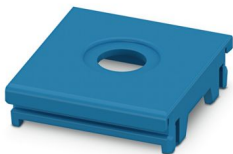


ICS25-F22A6-5015 - Connection plate

1287368

<https://www.phoenixcontact.com/us/products/1287368>

DIN rail housing, ICS filler, with antenna function cutout, width: 25 mm, height: 7.25 mm, depth: 22.4 mm, color: blue (similar RAL 5015)



ICC25-TP2,5/4R5,0-7035 - PCB terminal block



1474491

<https://www.phoenixcontact.com/us/products/1474491>

ICS25-F45D9-7035 - Connection plate

1053054

<https://www.phoenixcontact.com/us/products/1053054>

DIN rail housing, ICS filler, with D-SUB 9 function cutout, width: 25 mm, height: 7.25 mm, depth: 44.9 mm, color: light gray (similar RAL 7035)

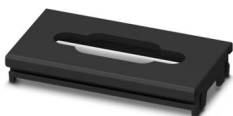


ICS25-F45D9-9005 - Connection plate

1072500

<https://www.phoenixcontact.com/us/products/1072500>

DIN rail housing, ICS filler, with D-SUB 9 function cutout, width: 25 mm, height: 7.25 mm, depth: 44.9 mm, color: black (similar RAL 9005)



ICC25-TP2,5/4R5,0-7035 - PCB terminal block



1474491

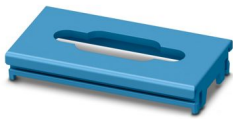
<https://www.phoenixcontact.com/us/products/1474491>

ICS25-F45D9-5015 - Connection plate

1071639

<https://www.phoenixcontact.com/us/products/1071639>

DIN rail housing, ICS filler, with D-SUB 9 function cutout, width: 25 mm, height: 7.25 mm, depth: 44.9 mm, color: blue (similar RAL 5015)



ICS25-F45D15-7035 - Connection plate

2203896

<https://www.phoenixcontact.com/us/products/2203896>

DIN rail housing, ICS filler, with D-SUB 15 function cutout, width: 25 mm, height: 7.25 mm, depth: 44.9 mm, color: light gray (similar RAL 7035)



ICC25-TP2,5/4R5,0-7035 - PCB terminal block



1474491

<https://www.phoenixcontact.com/us/products/1474491>

ICS25-F22J-7035 - Connection plate

2203895

<https://www.phoenixcontact.com/us/products/2203895>

DIN rail housing, ICS filler, with RJ45 function cutout, width: 25 mm, height: 7.25 mm, depth: 22.4 mm, color: light gray (similar RAL 7035)



ICS25-F22J-9005 - Connection plate

1072501

<https://www.phoenixcontact.com/us/products/1072501>

DIN rail housing, ICS filler, with RJ45 function cutout, width: 25 mm, height: 7.25 mm, depth: 22.4 mm, color: black (similar RAL 9005)



ICC25-TP2,5/4R5,0-7035 - PCB terminal block



1474491

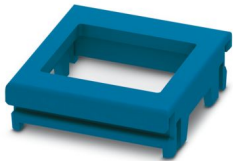
<https://www.phoenixcontact.com/us/products/1474491>

ICS25-F22J-5015 - Connection plate

1071641

<https://www.phoenixcontact.com/us/products/1071641>

DIN rail housing, ICS filler, with RJ45 function cutout, width: 25 mm, height: 7.25 mm, depth: 22.4 mm, color: blue (similar RAL 5015)

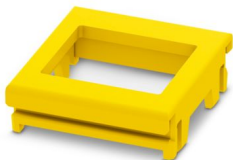


ICS25-F22J-1018 - Connection plate

1287378

<https://www.phoenixcontact.com/us/products/1287378>

DIN rail housing, ICS filler, with RJ45 function cutout, width: 25 mm, height: 7.25 mm, depth: 22.4 mm, color: yellow (similar RAL 1018)



ICC25-TP2,5/4R5,0-7035 - PCB terminal block



1474491

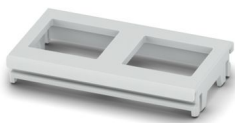
<https://www.phoenixcontact.com/us/products/1474491>

ICS25-F45-2J-7035 - Connection plate

1754070

<https://www.phoenixcontact.com/us/products/1754070>

DIN rail housing, ICS filler, with RJ45 function cutout, width: 25 mm, height: 7.25 mm, depth: 44.9 mm, color: light gray (similar RAL 7035)



ICS25-F22M12-7035 - Connection plate

1558623

<https://www.phoenixcontact.com/us/products/1558623>

DIN rail housing, ICS filler, with M12 function cutout, width: 25 mm, height: 7.25 mm, depth: 22.4 mm, color: light gray (similar RAL 7035)



ICC25-TP2,5/4R5,0-7035 - PCB terminal block



1474491

<https://www.phoenixcontact.com/us/products/1474491>

ICS25-F45-2M12-7035 - Connection plate

1754086

<https://www.phoenixcontact.com/us/products/1754086>

DIN rail housing, ICS filler, with M12 function cutout, width: 25 mm, height: 7.25 mm, depth: 44.9 mm, color: light gray (similar RAL 7035)



ICS25-F22U-7035 - Connection plate

1053046

<https://www.phoenixcontact.com/us/products/1053046>

DIN rail housing, ICS filler, with USB function cutout, width: 25 mm, height: 7.25 mm, depth: 22.4 mm, color: light gray (similar RAL 7035)



ICC25-TP2,5/4R5,0-7035 - PCB terminal block



1474491

<https://www.phoenixcontact.com/us/products/1474491>

ICS25-F22U-9005 - Connection plate

1072494

<https://www.phoenixcontact.com/us/products/1072494>

DIN rail housing, ICS filler, with USB function cutout, width: 25 mm, height: 7.25 mm, depth: 22.4 mm, color: black (similar RAL 9005)

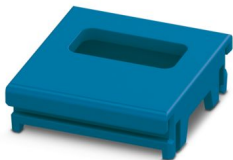


ICS25-F22U-5015 - Connection plate

1071629

<https://www.phoenixcontact.com/us/products/1071629>

DIN rail housing, ICS filler, with USB function cutout, width: 25 mm, height: 7.25 mm, depth: 22.4 mm, color: blue (similar RAL 5015)



ICC25-TP2,5/4R5,0-7035 - PCB terminal block



1474491

<https://www.phoenixcontact.com/us/products/1474491>

ICS25-F112V-9005 - Connection plate

1287399

<https://www.phoenixcontact.com/us/products/1287399>

DIN rail housing, ICS filler, with vents, width: 25 mm, height: 7.25 mm, depth: 112.3 mm, color: black (similar RAL 9005)



ICS25-F112V-7035 - Connection plate

1287401

<https://www.phoenixcontact.com/us/products/1287401>

DIN rail housing, ICS filler, with vents, width: 25 mm, height: 7.25 mm, depth: 112.3 mm, color: light gray (similar RAL 7035)



ICC25-TP2,5/4R5,0-7035 - PCB terminal block



1474491

<https://www.phoenixcontact.com/us/products/1474491>

ICS25-F22V-7035 - Connection plate

1079495

<https://www.phoenixcontact.com/us/products/1079495>

DIN rail housing, ICS filler, with vents, width: 25 mm, height: 7.25 mm, depth: 22.4 mm, color: light gray (similar RAL 7035)



ICS25-F22V-9005 - Connection plate

1104313

<https://www.phoenixcontact.com/us/products/1104313>

DIN rail housing, ICS filler, with vents, width: 25 mm, height: 7.25 mm, depth: 22.4 mm, color: black (similar RAL 9005)



ICC25-TP2,5/4R5,0-7035 - PCB terminal block



1474491

<https://www.phoenixcontact.com/us/products/1474491>

ICS25-F22V-5015 - Connection plate

1104318

<https://www.phoenixcontact.com/us/products/1104318>

DIN rail housing, ICS filler, with vents, width: 25 mm, height: 7.25 mm, depth: 22.4 mm, color: blue (similar RAL 5015)



ICS25-F22V-1018 - Connection plate

1287382

<https://www.phoenixcontact.com/us/products/1287382>

DIN rail housing, ICS filler, with vents, width: 25 mm, height: 7.25 mm, depth: 22.4 mm, color: yellow (similar RAL 1018)



ICC25-TP2,5/4R5,0-7035 - PCB terminal block



1474491

<https://www.phoenixcontact.com/us/products/1474491>

ICS25-F45V-7035 - Connection plate

1079492

<https://www.phoenixcontact.com/us/products/1079492>

DIN rail housing, ICS filler, with vents, width: 25 mm, height: 7.25 mm, depth: 44.9 mm, color: light gray (similar RAL 7035)



ICS25-F45V-9005 - Connection plate

1104312

<https://www.phoenixcontact.com/us/products/1104312>

DIN rail housing, ICS filler, with vents, width: 25 mm, height: 7.25 mm, depth: 44.9 mm, color: black (similar RAL 9005)



ICC25-TP2,5/4R5,0-7035 - PCB terminal block



1474491

<https://www.phoenixcontact.com/us/products/1474491>

ICS25-F45V-5015 - Connection plate

1104317

<https://www.phoenixcontact.com/us/products/1104317>

DIN rail housing, ICS filler, with vents, width: 25 mm, height: 7.25 mm, depth: 44.9 mm, color: blue (similar RAL 5015)



ICS25-F45V-1018 - Connection plate

1287380

<https://www.phoenixcontact.com/us/products/1287380>

DIN rail housing, ICS filler, with vents, width: 25 mm, height: 7.25 mm, depth: 44.9 mm, color: yellow (similar RAL 1018)



ICC25-TP2,5/4R5,0-7035 - PCB terminal block



1474491

<https://www.phoenixcontact.com/us/products/1474491>

ICS25-F67V-9005 - Connection plate

1287407

<https://www.phoenixcontact.com/us/products/1287407>

DIN rail housing, ICS filler, with vents, width: 25 mm, height: 7.25 mm, depth: 67.3 mm, color: black (similar RAL 9005)



ICS25-F67V-7035 - Connection plate

1287409

<https://www.phoenixcontact.com/us/products/1287409>

DIN rail housing, ICS filler, with vents, width: 25 mm, height: 7.25 mm, depth: 67.3 mm, color: light gray (similar RAL 7035)



ICC25-TP2,5/4R5,0-7035 - PCB terminal block



1474491

<https://www.phoenixcontact.com/us/products/1474491>

ICS25-F90V-9005 - Connection plate

1287403

<https://www.phoenixcontact.com/us/products/1287403>

DIN rail housing, ICS filler, with vents, width: 25 mm, height: 7.25 mm, depth: 89.8 mm, color: black (similar RAL 9005)



ICS25-F90V-7035 - Connection plate

1287405

<https://www.phoenixcontact.com/us/products/1287405>

DIN rail housing, ICS filler, with vents, width: 25 mm, height: 7.25 mm, depth: 89.8 mm, color: light gray (similar RAL 7035)



ICC25-TP2,5/4R5,0-7035 - PCB terminal block



1474491

<https://www.phoenixcontact.com/us/products/1474491>

ICS25-F112S-7035 - Connection plate

1287413

<https://www.phoenixcontact.com/us/products/1287413>

DIN rail housing, ICS filler, closed, width: 25 mm, height: 7.25 mm, depth: 112.3 mm, color: light gray (similar RAL 7035)



ICS25-F22S-7035 - Connection plate

2203890

<https://www.phoenixcontact.com/us/products/2203890>

DIN rail housing, ICS filler, closed, width: 25 mm, height: 7.25 mm, depth: 22.4 mm, color: light gray (similar RAL 7035)



ICC25-TP2,5/4R5,0-7035 - PCB terminal block



1474491

<https://www.phoenixcontact.com/us/products/1474491>

ICS25-F22S-9005 - Connection plate

1072520

<https://www.phoenixcontact.com/us/products/1072520>

DIN rail housing, ICS filler, closed, width: 25 mm, height: 7.25 mm, depth: 22.4 mm, color: black (similar RAL 9005)



ICS25-F22S-5015 - Connection plate

1071794

<https://www.phoenixcontact.com/us/products/1071794>

DIN rail housing, ICS filler, closed, width: 25 mm, height: 7.25 mm, depth: 22.4 mm, color: blue (similar RAL 5015)



ICC25-TP2,5/4R5,0-7035 - PCB terminal block



1474491

<https://www.phoenixcontact.com/us/products/1474491>

ICS25-F22S-1018 - Connection plate

1099531

<https://www.phoenixcontact.com/us/products/1099531>

DIN rail housing, ICS filler, closed, width: 25 mm, height: 7.25 mm, depth: 22.4 mm, color: yellow (similar RAL 1018)



ICS25-F45S-7035 - Connection plate

2203891

<https://www.phoenixcontact.com/us/products/2203891>

DIN rail housing, ICS filler, closed, width: 25 mm, height: 7.25 mm, depth: 44.9 mm, color: light gray (similar RAL 7035)



ICC25-TP2,5/4R5,0-7035 - PCB terminal block



1474491

<https://www.phoenixcontact.com/us/products/1474491>

ICS25-F45S-9005 - Connection plate

1072519

<https://www.phoenixcontact.com/us/products/1072519>

DIN rail housing, ICS filler, closed, width: 25 mm, height: 7.25 mm, depth: 44.9 mm, color: black (similar RAL 9005)



ICS25-F45S-5015 - Connection plate

1071767

<https://www.phoenixcontact.com/us/products/1071767>

DIN rail housing, ICS filler, closed, width: 25 mm, height: 7.25 mm, depth: 44.9 mm, color: blue (similar RAL 5015)



ICC25-TP2,5/4R5,0-7035 - PCB terminal block



1474491

<https://www.phoenixcontact.com/us/products/1474491>

ICS25-F45S-1018 - Connection plate

1099555

<https://www.phoenixcontact.com/us/products/1099555>

DIN rail housing, ICS filler, closed, width: 25 mm, height: 7.25 mm, depth: 44.9 mm, color: yellow (similar RAL 1018)



ICS25-F67S-7035 - Connection plate

1287434

<https://www.phoenixcontact.com/us/products/1287434>

DIN rail housing, ICS filler, closed, width: 25 mm, height: 7.25 mm, depth: 67.3 mm, color: light gray (similar RAL 7035)



ICC25-TP2,5/4R5,0-7035 - PCB terminal block



1474491

<https://www.phoenixcontact.com/us/products/1474491>

ICS25-F67S-9005 - Connection plate

1287431

<https://www.phoenixcontact.com/us/products/1287431>

DIN rail housing, ICS filler, closed, width: 25 mm, height: 7.25 mm, depth: 67.3 mm, color: black (similar RAL 9005)



ICS25-F90S-7035 - Connection plate

1287425

<https://www.phoenixcontact.com/us/products/1287425>

DIN rail housing, ICS filler, closed, width: 25 mm, height: 7.25 mm, depth: 89.8 mm, color: light gray (similar RAL 7035)



ICC25-TP2,5/4R5,0-7035 - PCB terminal block



1474491

<https://www.phoenixcontact.com/us/products/1474491>

ICS25-F90S-9005 - Connection plate

1287415

<https://www.phoenixcontact.com/us/products/1287415>

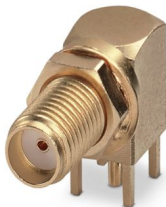
DIN rail housing, ICS filler, closed, width: 25 mm, height: 7.25 mm, depth: 89.8 mm, color: black (similar RAL 9005)



CUC-COX-J1M-A/KBS - Coaxial PCB connector

1340153

<https://www.phoenixcontact.com/us/products/1340153>



Coaxial PCB connector, degree of protection: IP20, number of positions: 1, 12 Gbps, material: Metal, connection method: Solder connection, cable outlet: straight, for additional information, see the product range drawing in the Download Center

ICC25-TP2,5/4R5,0-7035 - PCB terminal block

1474491

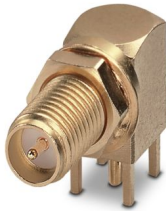
<https://www.phoenixcontact.com/us/products/1474491>



CUC-COX-J1M-A/LBS - Coaxial PCB connector

1340152

<https://www.phoenixcontact.com/us/products/1340152>



Coaxial PCB connector, degree of protection: IP20, number of positions: 1, 12 Gbps, material: Metal, connection method: Solder connection, cable outlet: straight

CUC-USB2.0-J1ST-AH/UAF-THT - USB PCB connectors

1332631

<https://www.phoenixcontact.com/us/products/1332631>



USB PCB connectors, connection direction of the connector to the PCB: 90 °, number of positions: 4, 480 Mbps, Wave soldering

ICC25-TP2,5/4R5,0-7035 - PCB terminal block



1474491

<https://www.phoenixcontact.com/us/products/1474491>

CUC-USB2.0-J1ST-AH/UAF-SMD - USB PCB connectors

1332634

<https://www.phoenixcontact.com/us/products/1332634>



USB PCB connectors, connection direction of the connector to the PCB: 90 °,
number of positions: 4, 480 Mbps, SMD soldering

CUC-USB3.0-J1ST-AH/UAF-THT - USB PCB connectors

1332637

<https://www.phoenixcontact.com/us/products/1332637>



USB PCB connectors, connection direction of the connector to the PCB: 90 °,
number of positions: 9, 5 GBit/s, Wave soldering

ICC25-TP2,5/4R5,0-7035 - PCB terminal block



1474491

<https://www.phoenixcontact.com/us/products/1474491>

CUC-SP-J1ST-AR4LB - Modular RJ45 PCB connectors

1149868

<https://www.phoenixcontact.com/us/products/1149868>



Modular RJ45 PCB connectors, 1x1 single-port, connection direction of the connector to the PCB: 90 °, Tab down, Shielded, number of positions: 8, 10 Gbps, PoE++, THT, Wave, type of packaging: Tray

CUC-SP-J1ST-AR4LB-LED - Modular RJ45 PCB connectors

1149866

<https://www.phoenixcontact.com/us/products/1149866>



Modular RJ45 PCB connectors, 1x1 single-port, connection direction of the connector to the PCB: 90 °, Tab down, Shielded, LED (green, yellow), number of positions: 8, 10 Gbps, PoE++, THT, Wave, type of packaging: Tray

ICC25-TP2,5/4R5,0-7035 - PCB terminal block



1474491

<https://www.phoenixcontact.com/us/products/1474491>

VS-09-ST-DSUB-ER - D-SUB connector

1688382

<https://www.phoenixcontact.com/us/products/1688382>



D-SUB contact insert, shell size 1, with 9 signal contacts, type of contact pin, for PCB mounting, angled, fixing with M3 thread and solder pins, for panel mounting frame VS-09-...

VS-09-BU-DSUB-ER - D-SUB connector

1688405

<https://www.phoenixcontact.com/us/products/1688405>



D-SUB contact insert, shell size 1, with 9 signal contacts, type of contact socket, for PCB mounting, angled, fixing with M3 thread and solder pins, for panel mounting frame VS-09-...

ICC25-TP2,5/4R5,0-7035 - PCB terminal block



1474491

<https://www.phoenixcontact.com/us/products/1474491>

VS-15-ST-DSUB-ER - D-SUB connector

1688081

<https://www.phoenixcontact.com/us/products/1688081>

D-SUB contact insert, shell size 2, with 15 signal contacts, type of contact pin, for PCB mounting, angled, fixing with M3 thread and solder pins, for panel mounting frame VS-15-...



VS-15-BU-DSUB-ER - D-SUB connector

1688120

<https://www.phoenixcontact.com/us/products/1688120>

D-SUB contact insert, shell size 2, with 15 signal contacts, type of contact socket, for PCB mounting, angled, fixing with M3 thread and solder pins, for panel mounting frame VS-15-...



ICC25-TP2,5/4R5,0-7035 - PCB terminal block



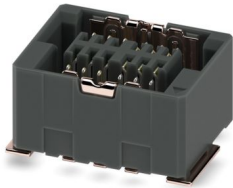
1474491

<https://www.phoenixcontact.com/us/products/1474491>

FP 0,8/ 12-FV-SH 4,85 - SMD female connector shielded

1043710

<https://www.phoenixcontact.com/us/products/1043710>

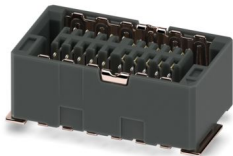


Shielded SMD female connector, nominal current: 1.7 A, test voltage: 500 V AC, number of positions: 12, pitch: 0.8 mm, color: black, contact surface: Au, contact connection type: Socket, mounting: SMD soldering

FP 0,8/ 20-FV-SH 4,85 - SMD female connector shielded

1053612

<https://www.phoenixcontact.com/us/products/1053612>



Shielded SMD female connector, nominal current: 1.7 A, test voltage: 500 V AC, number of positions: 20, pitch: 0.8 mm, color: black, contact surface: Au, contact connection type: Socket, mounting: SMD soldering

ICC25-TP2,5/4R5,0-7035 - PCB terminal block



1474491

<https://www.phoenixcontact.com/us/products/1474491>

FP 0,8/ 32-FV-SH 4,85 - SMD female connector shielded

1043711

<https://www.phoenixcontact.com/us/products/1043711>

Shielded SMD female connector, nominal current: 1.7 A, test voltage: 500 V AC, number of positions: 32, pitch: 0.8 mm, color: black, contact surface: Au, contact connection type: Socket, mounting: SMD soldering



FP 0,8/ 52-FV-SH 4,85 - SMD female connector shielded

1043713

<https://www.phoenixcontact.com/us/products/1043713>

Shielded SMD female connector, nominal current: 1.7 A, test voltage: 500 V AC, number of positions: 52, pitch: 0.8 mm, color: black, contact surface: Au, contact connection type: Socket, mounting: SMD soldering



ICC25-TP2,5/4R5,0-7035 - PCB terminal block



1474491

<https://www.phoenixcontact.com/us/products/1474491>

FP 0,8/ 80-FV-SH 4,85 - SMD female connector shielded

1043714

<https://www.phoenixcontact.com/us/products/1043714>

Shielded SMD female connector, nominal current: 1.7 A, test voltage: 500 V AC, number of positions: 80, pitch: 0.8 mm, color: black, contact surface: Au, contact connection type: Socket, mounting: SMD soldering



FP 0,8/ 12-MV-SH 8,65 - SMD male connector, shielded

1154119

<https://www.phoenixcontact.com/us/products/1154119>

shielded SMD male connector, nominal current: 1.7 A, test voltage: 500 V AC, number of positions: 12, pitch: 0.8 mm, color: black, contact surface: Au, contact connection type: Pin, mounting: SMD soldering



ICC25-TP2,5/4R5,0-7035 - PCB terminal block



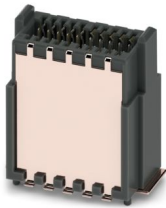
1474491

<https://www.phoenixcontact.com/us/products/1474491>

FP 0,8/ 20-MV-SH 8,65 - SMD male connector, shielded

1154120

<https://www.phoenixcontact.com/us/products/1154120>

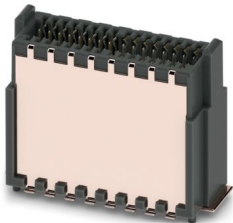


shielded SMD male connector, nominal current: 1.7 A, test voltage: 500 V AC, number of positions: 20, pitch: 0.8 mm, color: black, contact surface: Au, contact connection type: Pin, mounting: SMD soldering

FP 0,8/ 32-MV-SH 8,65 - SMD male connector, shielded

1154121

<https://www.phoenixcontact.com/us/products/1154121>



shielded SMD male connector, nominal current: 1.7 A, test voltage: 500 V AC, number of positions: 32, pitch: 0.8 mm, color: black, contact surface: Au, contact connection type: Pin, mounting: SMD soldering

ICC25-TP2,5/4R5,0-7035 - PCB terminal block



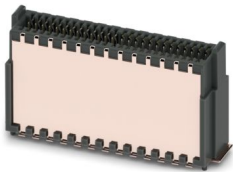
1474491

<https://www.phoenixcontact.com/us/products/1474491>

FP 0,8/ 52-MV-SH 8,65 - SMD male connector, shielded

1154122

<https://www.phoenixcontact.com/us/products/1154122>

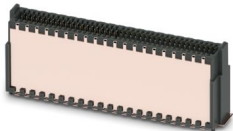


shielded SMD male connector, nominal current: 1.7 A, test voltage: 500 V AC, number of positions: 52, pitch: 0.8 mm, color: black, contact surface: Au, contact connection type: Pin, mounting: SMD soldering

FP 0,8/ 80-MV-SH 8,65 - SMD male connector, shielded

1154123

<https://www.phoenixcontact.com/us/products/1154123>



shielded SMD male connector, nominal current: 1.7 A, test voltage: 500 V AC, number of positions: 80, pitch: 0.8 mm, color: black, contact surface: Au, contact connection type: Pin, mounting: SMD soldering

ICC25-TP2,5/4R5,0-7035 - PCB terminal block



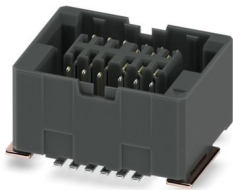
1474491

<https://www.phoenixcontact.com/us/products/1474491>

FP 0,8/ 12-FV 4,85 - SMD female connectors

1061643

<https://www.phoenixcontact.com/us/products/1061643>

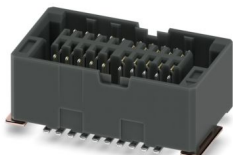


SMD female connector, nominal current: 1.7 A, test voltage: 500 V AC, number of positions: 12, pitch: 0.8 mm, color: black, contact surface: Au, contact connection type: Socket, mounting: SMD soldering

FP 0,8/ 20-FV 4,85 - SMD female connectors

1061660

<https://www.phoenixcontact.com/us/products/1061660>



SMD female connector, nominal current: 1.7 A, test voltage: 500 V AC, number of positions: 20, pitch: 0.8 mm, color: black, contact surface: Au, contact connection type: Socket, mounting: SMD soldering

ICC25-TP2,5/4R5,0-7035 - PCB terminal block



1474491

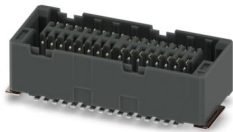
<https://www.phoenixcontact.com/us/products/1474491>

FP 0,8/ 32-FV 4,85 - SMD female connectors

1061662

<https://www.phoenixcontact.com/us/products/1061662>

SMD female connector, nominal current: 1.7 A, test voltage: 500 V AC, number of positions: 32, pitch: 0.8 mm, color: black, contact surface: Au, contact connection type: Socket, mounting: SMD soldering



FP 0,8/ 52-FV 4,85 - SMD female connectors

1061666

<https://www.phoenixcontact.com/us/products/1061666>

SMD female connector, nominal current: 1.7 A, test voltage: 500 V AC, number of positions: 52, pitch: 0.8 mm, color: black, contact surface: Au, contact connection type: Socket, mounting: SMD soldering



ICC25-TP2,5/4R5,0-7035 - PCB terminal block



1474491

<https://www.phoenixcontact.com/us/products/1474491>

FP 0,8/ 80-FV 4,85 - SMD female connectors

1061667

<https://www.phoenixcontact.com/us/products/1061667>

SMD female connector, nominal current: 1.7 A, test voltage: 500 V AC, number of positions: 80, pitch: 0.8 mm, color: black, contact surface: Au, contact connection type: Socket, mounting: SMD soldering



FP 0,8/ 12-MV 8,65 - SMD male connectors

1154012

<https://www.phoenixcontact.com/us/products/1154012>

SMD male connector, nominal current: 1.7 A, test voltage: 500 V AC, number of positions: 12, pitch: 0.8 mm, color: black, contact surface: Au, contact connection type: Pin, mounting: SMD soldering



ICC25-TP2,5/4R5,0-7035 - PCB terminal block



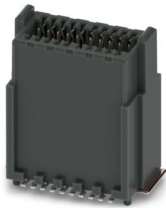
1474491

<https://www.phoenixcontact.com/us/products/1474491>

FP 0,8/ 20-MV 8,65 - SMD male connectors

1154013

<https://www.phoenixcontact.com/us/products/1154013>



SMD male connector, nominal current: 1.7 A, test voltage: 500 V AC, number of positions: 20, pitch: 0.8 mm, color: black, contact surface: Au, contact connection type: Pin, mounting: SMD soldering

FP 0,8/ 32-MV 8,65 - SMD male connectors

1154014

<https://www.phoenixcontact.com/us/products/1154014>



SMD male connector, nominal current: 1.7 A, test voltage: 500 V AC, number of positions: 32, pitch: 0.8 mm, color: black, contact surface: Au, contact connection type: Pin, mounting: SMD soldering

ICC25-TP2,5/4R5,0-7035 - PCB terminal block



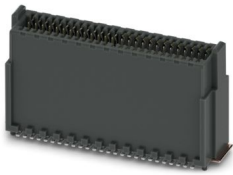
1474491

<https://www.phoenixcontact.com/us/products/1474491>

FP 0,8/ 52-MV 8,65 - SMD male connectors

1154015

<https://www.phoenixcontact.com/us/products/1154015>

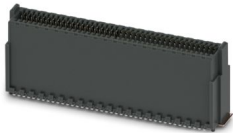


SMD male connector, nominal current: 1.7 A, test voltage: 500 V AC, number of positions: 52, pitch: 0.8 mm, color: black, contact surface: Au, contact connection type: Pin, mounting: SMD soldering

FP 0,8/ 80-MV 8,65 - SMD male connectors

1154016

<https://www.phoenixcontact.com/us/products/1154016>



SMD male connector, nominal current: 1.7 A, test voltage: 500 V AC, number of positions: 80, pitch: 0.8 mm, color: black, contact surface: Au, contact connection type: Pin, mounting: SMD soldering

ICC25-TP2,5/4R5,0-7035 - PCB terminal block



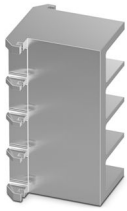
1474491

<https://www.phoenixcontact.com/us/products/1474491>

ICE25-F45H-A1 - Heatsink

1328703

<https://www.phoenixcontact.com/us/products/1328703>

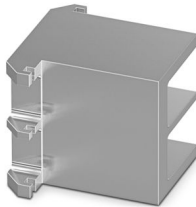


Heatsink for housing series: ICS, type: Heatsink fillers, material: Aluminum, anodized, product range: ICS25, width: 44.9 mm, height: 25 mm, Individual milling possible.

ICE25-F22H-A1 - Heatsink

1328704

<https://www.phoenixcontact.com/us/products/1328704>



Heatsink for housing series: ICS, type: Heatsink fillers, material: Aluminum, anodized, product range: ICS25, width: 22.4 mm, height: 25 mm, Individual milling possible.

ICC25-TP2,5/4R5,0-7035 - PCB terminal block



1474491

<https://www.phoenixcontact.com/us/products/1474491>

ICE25-R100X45-A1 - Heatsink

1328714

<https://www.phoenixcontact.com/us/products/1328714>

Heatsink for housing series: ICS, material: Aluminum, anodized, product range: ICS25-..100X.., width: 44.9 mm, height: 25 mm, Individual milling possible.



ICE25-R100X22-A1 - Heatsink

1328715

<https://www.phoenixcontact.com/us/products/1328715>

Heatsink for housing series: ICS, material: Aluminum, anodized, product range: ICS25-..100X.., width: 22.4 mm, height: 25 mm, Individual milling possible.



ICC25-TP2,5/4R5,0-7035 - PCB terminal block



1474491

<https://www.phoenixcontact.com/us/products/1474491>

ICE25-R122X45-A1 - Heatsink

1328708

<https://www.phoenixcontact.com/us/products/1328708>

Heatsink for housing series: ICS, material: Aluminum, anodized, product range: ICS25-..122X.., width: 44.9 mm, height: 25 mm, Individual milling possible.



ICE25-R122X22-A1 - Heatsink

1328711

<https://www.phoenixcontact.com/us/products/1328711>

Heatsink for housing series: ICS, material: Aluminum, anodized, product range: ICS25-..122X.., width: 22.4 mm, height: 25 mm, Individual milling possible.



ICC25-TP2,5/4R5,0-7035 - PCB terminal block



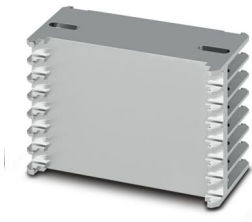
1474491

<https://www.phoenixcontact.com/us/products/1474491>

ICE50-R100X67-A1 - Heatsink

1118306

<https://www.phoenixcontact.com/us/products/1118306>



Heatsink for housing series: ICS, material: Aluminum, anodized, product range: ICS50-..100X.., width: 67.4 mm, height: 50.1 mm, Individual milling possible.

ICE50-R100X45-A1 - Heatsink

1328712

<https://www.phoenixcontact.com/us/products/1328712>



Heatsink for housing series: ICS, material: Aluminum, anodized, product range: ICS50-..100X.., width: 44.9 mm, height: 50.1 mm, Individual milling possible.

ICC25-TP2,5/4R5,0-7035 - PCB terminal block



1474491

<https://www.phoenixcontact.com/us/products/1474491>

ICE50-R100X22-A1 - Heatsink

1328713

<https://www.phoenixcontact.com/us/products/1328713>

Heatsink for housing series: ICS, material: Aluminum, anodized, product range: ICS50-..100X.., width: 22.4 mm, height: 50.1 mm, Individual milling possible.

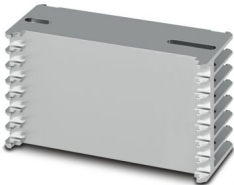


ICE50-R122X67-A1 - Heatsink

1118305

<https://www.phoenixcontact.com/us/products/1118305>

Heatsink for housing series: ICS, material: Aluminum, anodized, product range: ICS50-..122X.., width: 67.4 mm, height: 50.1 mm, Individual milling possible.



ICC25-TP2,5/4R5,0-7035 - PCB terminal block



1474491

<https://www.phoenixcontact.com/us/products/1474491>

ICE50-R122X45-A1 - Heatsink

1328706

<https://www.phoenixcontact.com/us/products/1328706>

Heatsink for housing series: ICS, material: Aluminum, anodized, product range: ICS50-..122X.., width: 44.9 mm, height: 50.1 mm, Individual milling possible.



ICE50-R122X22-A1 - Heatsink

1328707

<https://www.phoenixcontact.com/us/products/1328707>

Heatsink for housing series: ICS, material: Aluminum, anodized, product range: ICS50-..122X.., width: 22.4 mm, height: 50.1 mm, Individual milling possible.



ICC25-TP2,5/4R5,0-7035 - PCB terminal block



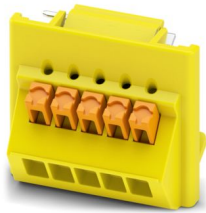
1474491

<https://www.phoenixcontact.com/us/products/1474491>

ICC25-TP1,5/5L3,5-1018 - PCB terminal block

1477248

<https://www.phoenixcontact.com/us/products/1477248>

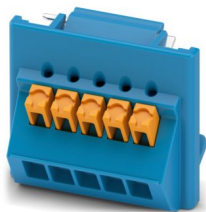


Printed circuit board terminal, nominal current: 8 A, rated voltage (III/2): 150 V, nominal cross section: 1.5 mm², number of potentials: 5, number of rows: 1, number of positions per row: 5, product range: ICC...-TP1,5/..L3,5, pitch: 3.5 mm, connection method: Push-in spring connection, mounting: Wave soldering, conductor/PCB connection direction: 0 °, color: yellow, Pin layout: Linear pinning, Solder pin [P]: 2.8 mm, number of solder pins per potential: 1, type of packaging: packed in cardboard. Product with pin output on left side

ICC25-TP1,5/5L3,5-5015 - PCB terminal block

1477246

<https://www.phoenixcontact.com/us/products/1477246>



Printed circuit board terminal, nominal current: 8 A, rated voltage (III/2): 150 V, nominal cross section: 1.5 mm², number of potentials: 5, number of rows: 1, number of positions per row: 5, product range: ICC...-TP1,5/..L3,5, pitch: 3.5 mm, connection method: Push-in spring connection, mounting: Wave soldering, conductor/PCB connection direction: 0 °, color: blue, Pin layout: Linear pinning, Solder pin [P]: 2.8 mm, number of solder pins per potential: 1, type of packaging: packed in cardboard. Product with pin output on left side

ICC25-TP2,5/4R5,0-7035 - PCB terminal block



1474491

<https://www.phoenixcontact.com/us/products/1474491>

ICC25-TP1,5/5L3,5-7035 - PCB terminal block

1474497

<https://www.phoenixcontact.com/us/products/1474497>



Printed circuit board terminal, nominal current: 8 A, rated voltage (III/2): 150 V, nominal cross section: 1.5 mm², number of potentials: 5, number of rows: 1, number of positions per row: 5, product range: ICC...-TP1,5/..L3,5, pitch: 3.5 mm, connection method: Push-in spring connection, mounting: Wave soldering, conductor/PCB connection direction: 0 °, color: light gray, Pin layout: Linear pinning, Solder pin [P]: 2.8 mm, number of solder pins per potential: 1, type of packaging: packed in cardboard. Product with pin output on left side

ICC25-TP1,5/5L3,5-9005 - PCB terminal block

1477245

<https://www.phoenixcontact.com/us/products/1477245>



Printed circuit board terminal, nominal current: 8 A, rated voltage (III/2): 150 V, nominal cross section: 1.5 mm², number of potentials: 5, number of rows: 1, number of positions per row: 5, product range: ICC...-TP1,5/..L3,5, pitch: 3.5 mm, connection method: Push-in spring connection, mounting: Wave soldering, conductor/PCB connection direction: 0 °, color: black, Pin layout: Linear pinning, Solder pin [P]: 2.8 mm, number of solder pins per potential: 1, type of packaging: packed in cardboard. Product with pin output on left side

ICC25-TP2,5/4R5,0-7035 - PCB terminal block

1474491

<https://www.phoenixcontact.com/us/products/1474491>



ICC25-TP1,5/5R3,5-1018 - PCB terminal block

1477331

<https://www.phoenixcontact.com/us/products/1477331>



Printed circuit board terminal, nominal current: 8 A, rated voltage (III/2): 150 V, nominal cross section: 1.5 mm², number of potentials: 5, number of rows: 1, number of positions per row: 5, product range: ICC...-TP1,5/..R3,5, pitch: 3.5 mm, connection method: Push-in spring connection, mounting: Wave soldering, conductor/PCB connection direction: 0 °, color: yellow, Pin layout: Linear pinning, Solder pin [P]: 2.8 mm, number of solder pins per potential: 1, type of packaging: packed in cardboard. Product with pin output on right side

ICC25-TP1,5/5R3,5-5015 - PCB terminal block

1477330

<https://www.phoenixcontact.com/us/products/1477330>



Printed circuit board terminal, nominal current: 8 A, rated voltage (III/2): 150 V, nominal cross section: 1.5 mm², number of potentials: 5, number of rows: 1, number of positions per row: 5, product range: ICC...-TP1,5/..R3,5, pitch: 3.5 mm, connection method: Push-in spring connection, mounting: Wave soldering, conductor/PCB connection direction: 0 °, color: blue, Pin layout: Linear pinning, Solder pin [P]: 2.8 mm, number of solder pins per potential: 1, type of packaging: packed in cardboard. Product with pin output on right side

ICC25-TP2,5/4R5,0-7035 - PCB terminal block



1474491

<https://www.phoenixcontact.com/us/products/1474491>

ICC25-TP1,5/5R3,5-7035 - PCB terminal block

1474499

<https://www.phoenixcontact.com/us/products/1474499>



Printed circuit board terminal, nominal current: 8 A, rated voltage (III/2): 150 V, nominal cross section: 1.5 mm², number of potentials: 5, number of rows: 1, number of positions per row: 5, product range: ICC...-TP1,5/..R3,5, pitch: 3.5 mm, connection method: Push-in spring connection, mounting: Wave soldering, conductor/PCB connection direction: 0 °, color: light gray, Pin layout: Linear pinning, Solder pin [P]: 2.8 mm, number of solder pins per potential: 1, type of packaging: packed in cardboard. Product with pin output on right side

ICC25-TP1,5/5R3,5-9005 - PCB terminal block

1477328

<https://www.phoenixcontact.com/us/products/1477328>



Printed circuit board terminal, nominal current: 8 A, rated voltage (III/2): 150 V, nominal cross section: 1.5 mm², number of potentials: 5, number of rows: 1, number of positions per row: 5, product range: ICC...-TP1,5/..R3,5, pitch: 3.5 mm, connection method: Push-in spring connection, mounting: Wave soldering, conductor/PCB connection direction: 0 °, color: black, Pin layout: Linear pinning, Solder pin [P]: 2.8 mm, number of solder pins per potential: 1, type of packaging: packed in cardboard. Product with pin output on right side

ICC25-TP2,5/4R5,0-7035 - PCB terminal block



1474491

<https://www.phoenixcontact.com/us/products/1474491>

ICC25-TP2,5/4L5,0-1018 - PCB terminal block

1477323

<https://www.phoenixcontact.com/us/products/1477323>



Printed circuit board terminal, nominal current: 18 A, rated voltage (III/2): 300 V, nominal cross section: 2.5 mm², number of potentials: 4, number of rows: 1, number of positions per row: 4, product range: ICC...-TP2,5/..L5,0, pitch: 5 mm, connection method: Push-in spring connection, mounting: Wave soldering, conductor/PCB connection direction: 0 °, color: yellow, Pin layout: Linear pinning, Solder pin [P]: 3.15 mm, number of solder pins per potential: 1, type of packaging: packed in cardboard. Product with pin output on left side

ICC25-TP2,5/4L5,0-5015 - PCB terminal block

1477322

<https://www.phoenixcontact.com/us/products/1477322>



Printed circuit board terminal, nominal current: 18 A, rated voltage (III/2): 300 V, nominal cross section: 2.5 mm², number of potentials: 4, number of rows: 1, number of positions per row: 4, product range: ICC...-TP2,5/..L5,0, pitch: 5 mm, connection method: Push-in spring connection, mounting: Wave soldering, conductor/PCB connection direction: 0 °, color: blue, Pin layout: Linear pinning, Solder pin [P]: 3.15 mm, number of solder pins per potential: 1, type of packaging: packed in cardboard. Product with pin output on left side

ICC25-TP2,5/4R5,0-7035 - PCB terminal block



1474491

<https://www.phoenixcontact.com/us/products/1474491>

ICC25-TP2,5/4L5,0-7035 - PCB terminal block

1474487

<https://www.phoenixcontact.com/us/products/1474487>



Printed circuit board terminal, nominal current: 18 A, rated voltage (III/2): 300 V, nominal cross section: 2.5 mm², number of potentials: 4, number of rows: 1, number of positions per row: 4, product range: ICC...-TP2,5/..L5,0, pitch: 5 mm, connection method: Push-in spring connection, mounting: Wave soldering, conductor/PCB connection direction: 0 °, color: light gray, Pin layout: Linear pinning, Solder pin [P]: 3.15 mm, number of solder pins per potential: 1, type of packaging: packed in cardboard. Product with pin output on left side

ICC25-TP2,5/4L5,0-9005 - PCB terminal block

1477321

<https://www.phoenixcontact.com/us/products/1477321>



Printed circuit board terminal, nominal current: 18 A, rated voltage (III/2): 300 V, nominal cross section: 2.5 mm², number of potentials: 4, number of rows: 1, number of positions per row: 4, product range: ICC...-TP2,5/..L5,0, pitch: 5 mm, connection method: Push-in spring connection, mounting: Wave soldering, conductor/PCB connection direction: 0 °, color: black, Pin layout: Linear pinning, Solder pin [P]: 3.15 mm, number of solder pins per potential: 1, type of packaging: packed in cardboard. Product with pin output on left side

ICC25-TP2,5/4R5,0-7035 - PCB terminal block



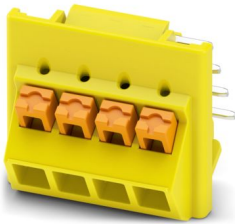
1474491

<https://www.phoenixcontact.com/us/products/1474491>

ICC25-TP2,5/4R5,0-1018 - PCB terminal block

1477327

<https://www.phoenixcontact.com/us/products/1477327>

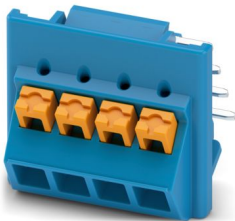


Printed circuit board terminal, nominal current: 18 A, rated voltage (III/2): 300 V, nominal cross section: 2.5 mm², number of potentials: 4, number of rows: 1, number of positions per row: 4, product range: ICC..-TP2,5/..R5,0, pitch: 5 mm, connection method: Push-in spring connection, mounting: Wave soldering, conductor/PCB connection direction: 0 °, color: yellow, Pin layout: Linear pinning, Solder pin [P]: 3.15 mm, number of solder pins per potential: 1, type of packaging: packed in cardboard. Product with pin output on right side

ICC25-TP2,5/4R5,0-5015 - PCB terminal block

1477325

<https://www.phoenixcontact.com/us/products/1477325>



Printed circuit board terminal, nominal current: 18 A, rated voltage (III/2): 300 V, nominal cross section: 2.5 mm², number of potentials: 4, number of rows: 1, number of positions per row: 4, product range: ICC..-TP2,5/..R5,0, pitch: 5 mm, connection method: Push-in spring connection, mounting: Wave soldering, conductor/PCB connection direction: 0 °, color: blue, Pin layout: Linear pinning, Solder pin [P]: 3.15 mm, number of solder pins per potential: 1, type of packaging: packed in cardboard. Product with pin output on right side

ICC25-TP2,5/4R5,0-7035 - PCB terminal block



1474491

<https://www.phoenixcontact.com/us/products/1474491>

ICC25-TP2,5/4R5,0-7035 - PCB terminal block

1474491

<https://www.phoenixcontact.com/us/products/1474491>



Printed circuit board terminal, nominal current: 18 A, rated voltage (III/2): 300 V, nominal cross section: 2.5 mm², number of potentials: 4, number of rows: 1, number of positions per row: 4, product range: ICC..-TP2,5/..R5,0, pitch: 5 mm, connection method: Push-in spring connection, mounting: Wave soldering, conductor/PCB connection direction: 0 °, color: light gray, Pin layout: Linear pinning, Solder pin [P]: 3.15 mm, number of solder pins per potential: 1, type of packaging: packed in cardboard. Product with pin output on right side

ICC25-TP2,5/4R5,0-9005 - PCB terminal block

1477324

<https://www.phoenixcontact.com/us/products/1477324>



Printed circuit board terminal, nominal current: 18 A, rated voltage (III/2): 300 V, nominal cross section: 2.5 mm², number of potentials: 4, number of rows: 1, number of positions per row: 4, product range: ICC..-TP2,5/..R5,0, pitch: 5 mm, connection method: Push-in spring connection, mounting: Wave soldering, conductor/PCB connection direction: 0 °, color: black, Pin layout: Linear pinning, Solder pin [P]: 3.15 mm, number of solder pins per potential: 1, type of packaging: packed in cardboard. Product with pin output on right side

ICC25-TP2,5/4R5,0-7035 - PCB terminal block



1474491

<https://www.phoenixcontact.com/us/products/1474491>

ICC25-TS1,5/5L3,5-1018 - PCB terminal block

1380328

<https://www.phoenixcontact.com/us/products/1380328>



Printed circuit board terminal, nominal current: 16 A, rated voltage (III/2): 150 V, nominal cross section: 1.5 mm², number of potentials: 5, number of rows: 1, number of positions per row: 5, product range: ICC...-TS1,5/..L3,5, pitch: 3.5 mm, connection method: Screw connection with tension sleeve, screw head form: L Slotted, mounting: Wave soldering, conductor/PCB connection direction: 0 °, color: yellow, Pin layout: Linear pinning, Solder pin [P]: 2.8 mm, number of solder pins per potential: 1, type of packaging: packed in cardboard. Product with pin output on left side

ICC25-TS1,5/5L3,5-5015 - PCB terminal block

1380316

<https://www.phoenixcontact.com/us/products/1380316>



Printed circuit board terminal, nominal current: 16 A, rated voltage (III/2): 150 V, nominal cross section: 1.5 mm², number of potentials: 5, number of rows: 1, number of positions per row: 5, product range: ICC...-TS1,5/..L3,5, pitch: 3.5 mm, connection method: Screw connection with tension sleeve, screw head form: L Slotted, mounting: Wave soldering, conductor/PCB connection direction: 0 °, color: blue, Pin layout: Linear pinning, Solder pin [P]: 2.8 mm, number of solder pins per potential: 1, type of packaging: packed in cardboard. Product with pin output on left side

ICC25-TP2,5/4R5,0-7035 - PCB terminal block



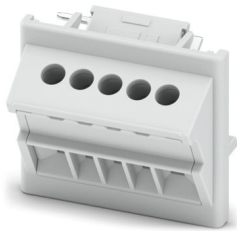
1474491

<https://www.phoenixcontact.com/us/products/1474491>

ICC25-TS1,5/5L3,5-7035 - PCB terminal block

1380295

<https://www.phoenixcontact.com/us/products/1380295>



Printed circuit board terminal, nominal current: 16 A, rated voltage (III/2): 150 V, nominal cross section: 1.5 mm², number of potentials: 5, number of rows: 1, number of positions per row: 5, product range: ICC...-TS1,5/..L3,5, pitch: 3.5 mm, connection method: Screw connection with tension sleeve, screw head form: L Slotted, mounting: Wave soldering, conductor/PCB connection direction: 0 °, color: light gray, Pin layout: Linear pinning, Solder pin [P]: 2.8 mm, number of solder pins per potential: 1, type of packaging: packed in cardboard. Product with pin output on left side

ICC25-TS1,5/5L3,5-9005 - PCB terminal block

1380308

<https://www.phoenixcontact.com/us/products/1380308>



Printed circuit board terminal, nominal current: 16 A, rated voltage (III/2): 150 V, nominal cross section: 1.5 mm², number of potentials: 5, number of rows: 1, number of positions per row: 5, product range: ICC...-TS1,5/..L3,5, pitch: 3.5 mm, connection method: Screw connection with tension sleeve, screw head form: L Slotted, mounting: Wave soldering, conductor/PCB connection direction: 0 °, color: black, Pin layout: Linear pinning, Solder pin [P]: 2.8 mm, number of solder pins per potential: 1, type of packaging: packed in cardboard. Product with pin output on left side

ICC25-TP2,5/4R5,0-7035 - PCB terminal block



1474491

<https://www.phoenixcontact.com/us/products/1474491>

ICC25-TS1,5/5R3,5-1018 - PCB terminal block

1380329

<https://www.phoenixcontact.com/us/products/1380329>



Printed circuit board terminal, nominal current: 16 A, rated voltage (III/2): 150 V, nominal cross section: 1.5 mm², number of potentials: 5, number of rows: 1, number of positions per row: 5, product range: ICC...-TS1,5/..R3,5, pitch: 3.5 mm, connection method: Screw connection with tension sleeve, screw head form: L Slotted, mounting: Wave soldering, conductor/PCB connection direction: 0 °, color: yellow, Pin layout: Linear pinning, Solder pin [P]: 2.8 mm, number of solder pins per potential: 1, type of packaging: packed in cardboard. Product with pin output on right side

ICC25-TS1,5/5R3,5-5015 - PCB terminal block

1380317

<https://www.phoenixcontact.com/us/products/1380317>



Printed circuit board terminal, nominal current: 16 A, rated voltage (III/2): 150 V, nominal cross section: 1.5 mm², number of potentials: 5, number of rows: 1, number of positions per row: 5, product range: ICC...-TS1,5/..R3,5, pitch: 3.5 mm, connection method: Screw connection with tension sleeve, screw head form: L Slotted, mounting: Wave soldering, conductor/PCB connection direction: 0 °, color: blue, Pin layout: Linear pinning, Solder pin [P]: 2.8 mm, number of solder pins per potential: 1, type of packaging: packed in cardboard. Product with pin output on right side

ICC25-TP2,5/4R5,0-7035 - PCB terminal block



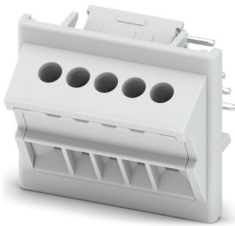
1474491

<https://www.phoenixcontact.com/us/products/1474491>

ICC25-TS1,5/5R3,5-7035 - PCB terminal block

1380298

<https://www.phoenixcontact.com/us/products/1380298>



Printed circuit board terminal, nominal current: 16 A, rated voltage (III/2): 150 V, nominal cross section: 1.5 mm², number of potentials: 5, number of rows: 1, number of positions per row: 5, product range: ICC...-TS1,5/..R3,5, pitch: 3.5 mm, connection method: Screw connection with tension sleeve, screw head form: L Slotted, mounting: Wave soldering, conductor/PCB connection direction: 0 °, color: light gray, Pin layout: Linear pinning, Solder pin [P]: 2.8 mm, number of solder pins per potential: 1, type of packaging: packed in cardboard. Product with pin output on right side

ICC25-TS1,5/5R3,5-9005 - PCB terminal block

1380309

<https://www.phoenixcontact.com/us/products/1380309>



Printed circuit board terminal, nominal current: 16 A, rated voltage (III/2): 150 V, nominal cross section: 1.5 mm², number of potentials: 5, number of rows: 1, number of positions per row: 5, product range: ICC...-TS1,5/..R3,5, pitch: 3.5 mm, connection method: Screw connection with tension sleeve, screw head form: L Slotted, mounting: Wave soldering, conductor/PCB connection direction: 0 °, color: black, Pin layout: Linear pinning, Solder pin [P]: 2.8 mm, number of solder pins per potential: 1, type of packaging: packed in cardboard. Product with pin output on right side

ICC25-TP2,5/4R5,0-7035 - PCB terminal block



1474491

<https://www.phoenixcontact.com/us/products/1474491>

ICC25-TS2,5/4L5,0-1018 - PCB terminal block

1380324

<https://www.phoenixcontact.com/us/products/1380324>



Printed circuit board terminal, nominal current: 24 A, rated voltage (III/2): 300 V, nominal cross section: 2.5 mm², number of potentials: 4, number of rows: 1, number of positions per row: 4, product range: ICC...-TS2,5/..L5,0, pitch: 5 mm, connection method: Screw connection with tension sleeve, screw head form: H1L Slotted Phillips recess, mounting: Wave soldering, conductor/PCB connection direction: 0 °, color: yellow, Pin layout: Linear pinning, Solder pin [P]: 3.15 mm, number of solder pins per potential: 1, type of packaging: packed in cardboard. Product with pin output on left side

ICC25-TS2,5/4L5,0-5015 - PCB terminal block

1380314

<https://www.phoenixcontact.com/us/products/1380314>



Printed circuit board terminal, nominal current: 24 A, rated voltage (III/2): 300 V, nominal cross section: 2.5 mm², number of potentials: 4, number of rows: 1, number of positions per row: 4, product range: ICC...-TS2,5/..L5,0, pitch: 5 mm, connection method: Screw connection with tension sleeve, screw head form: H1L Slotted Phillips recess, mounting: Wave soldering, conductor/PCB connection direction: 0 °, color: blue, Pin layout: Linear pinning, Solder pin [P]: 3.15 mm, number of solder pins per potential: 1, type of packaging: packed in cardboard. Product with pin output on left side

ICC25-TP2,5/4R5,0-7035 - PCB terminal block



1474491

<https://www.phoenixcontact.com/us/products/1474491>

ICC25-TS2,5/4L5,0-7035 - PCB terminal block

1380293

<https://www.phoenixcontact.com/us/products/1380293>



Printed circuit board terminal, nominal current: 24 A, rated voltage (III/2): 300 V, nominal cross section: 2.5 mm², number of potentials: 4, number of rows: 1, number of positions per row: 4, product range: ICC...-TS2,5/..L5,0, pitch: 5 mm, connection method: Screw connection with tension sleeve, screw head form: H1L Slotted Phillips recess, mounting: Wave soldering, conductor/PCB connection direction: 0 °, color: light gray, Pin layout: Linear pinning, Solder pin [P]: 3.15 mm, number of solder pins per potential: 1, type of packaging: packed in cardboard. Product with pin output on left side

ICC25-TS2,5/4L5,0-9005 - PCB terminal block

1380305

<https://www.phoenixcontact.com/us/products/1380305>



Printed circuit board terminal, nominal current: 24 A, rated voltage (III/2): 300 V, nominal cross section: 2.5 mm², number of potentials: 4, number of rows: 1, number of positions per row: 4, product range: ICC...-TS2,5/..L5,0, pitch: 5 mm, connection method: Screw connection with tension sleeve, screw head form: H1L Slotted Phillips recess, mounting: Wave soldering, conductor/PCB connection direction: 0 °, color: black, Pin layout: Linear pinning, Solder pin [P]: 3.15 mm, number of solder pins per potential: 1, type of packaging: packed in cardboard. Product with pin output on left side

ICC25-TP2,5/4R5,0-7035 - PCB terminal block



1474491

<https://www.phoenixcontact.com/us/products/1474491>

ICC25-TS2,5/4R5,0-1018 - PCB terminal block

1380326

<https://www.phoenixcontact.com/us/products/1380326>

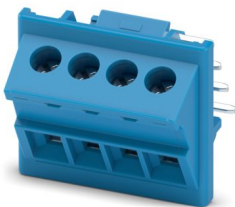


Printed circuit board terminal, nominal current: 24 A, rated voltage (III/2): 300 V, nominal cross section: 2.5 mm², number of potentials: 4, number of rows: 1, number of positions per row: 4, product range: ICC..-TS2,5/..R5,0, pitch: 5 mm, connection method: Screw connection with tension sleeve, screw head form: H1L Slotted Phillips recess, mounting: Wave soldering, conductor/PCB connection direction: 0 °, color: yellow, Pin layout: Linear pinning, Solder pin [P]: 3.15 mm, number of solder pins per potential: 1, type of packaging: packed in cardboard. Product with pin output on right side

ICC25-TS2,5/4R5,0-5015 - PCB terminal block

1380315

<https://www.phoenixcontact.com/us/products/1380315>



Printed circuit board terminal, nominal current: 24 A, rated voltage (III/2): 300 V, nominal cross section: 2.5 mm², number of potentials: 4, number of rows: 1, number of positions per row: 4, product range: ICC..-TS2,5/..R5,0, pitch: 5 mm, connection method: Screw connection with tension sleeve, screw head form: H1L Slotted Phillips recess, mounting: Wave soldering, conductor/PCB connection direction: 0 °, color: blue, Pin layout: Linear pinning, Solder pin [P]: 3.15 mm, number of solder pins per potential: 1, type of packaging: packed in cardboard. Product with pin output on right side

ICC25-TP2,5/4R5,0-7035 - PCB terminal block



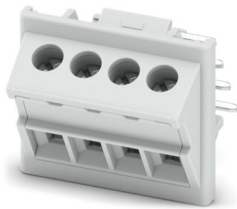
1474491

<https://www.phoenixcontact.com/us/products/1474491>

ICC25-TS2,5/4R5,0-7035 - PCB terminal block

1380294

<https://www.phoenixcontact.com/us/products/1380294>



Printed circuit board terminal, nominal current: 24 A, rated voltage (III/2): 300 V, nominal cross section: 2.5 mm², number of potentials: 4, number of rows: 1, number of positions per row: 4, product range: ICC..-TS2,5/..R5,0, pitch: 5 mm, connection method: Screw connection with tension sleeve, screw head form: H1L Slotted Phillips recess, mounting: Wave soldering, conductor/PCB connection direction: 0 °, color: light gray, Pin layout: Linear pinning, Solder pin [P]: 3.15 mm, number of solder pins per potential: 1, type of packaging: packed in cardboard. Product with pin output on right side

ICC25-TS2,5/4R5,0-9005 - PCB terminal block

1380306

<https://www.phoenixcontact.com/us/products/1380306>



Printed circuit board terminal, nominal current: 24 A, rated voltage (III/2): 300 V, nominal cross section: 2.5 mm², number of potentials: 4, number of rows: 1, number of positions per row: 4, product range: ICC..-TS2,5/..R5,0, pitch: 5 mm, connection method: Screw connection with tension sleeve, screw head form: H1L Slotted Phillips recess, mounting: Wave soldering, conductor/PCB connection direction: 0 °, color: black, Pin layout: Linear pinning, Solder pin [P]: 3.15 mm, number of solder pins per potential: 1, type of packaging: packed in cardboard. Product with pin output on right side

ICC25-TP2,5/4R5,0-7035 - PCB terminal block



1474491

<https://www.phoenixcontact.com/us/products/1474491>

ICC25-H/5L3,5-1018 - PCB header

1357417

<https://www.phoenixcontact.com/us/products/1357417>



PCB headers, color: yellow, nominal current: 8 A, rated voltage (III/2): 150 V, contact surface: Sn, contact connection type: Pin, number of potentials: 5, number of rows: 1, number of positions: 5, number of connections: 5, product range: ICC...-H/...L3,5, pitch: 3.5 mm, mounting: Wave soldering, pin layout: Linear pinning, solder pin [P]: 2.8 mm, number of solder pins per potential: 1, plug-in system: ICC 1,5, Pin connector pattern alignment: Standard, locking: Snap-in locking, mounting method: without, type of packaging: Box packaging, Product with pin output on left side

ICC25-H/5L3,5-5015 - PCB header

1522853

<https://www.phoenixcontact.com/us/products/1522853>



PCB headers, color: blue, nominal current: 8 A, rated voltage (III/2): 150 V, contact surface: Sn, contact connection type: Pin, number of potentials: 5, number of rows: 1, number of positions: 5, number of connections: 5, product range: ICC...-H/...L3,5, pitch: 3.5 mm, mounting: Wave soldering, pin layout: Linear pinning, solder pin [P]: 2.8 mm, number of solder pins per potential: 1, plug-in system: ICC 1,5, Pin connector pattern alignment: Standard, locking: Snap-in locking, mounting method: without, type of packaging: Box packaging, Product with pin output on left side

ICC25-TP2,5/4R5,0-7035 - PCB terminal block



1474491

<https://www.phoenixcontact.com/us/products/1474491>

ICC25-H/5L3,5-7035 - PCB header

1084018

<https://www.phoenixcontact.com/us/products/1084018>



PCB headers, color: light gray, nominal current: 8 A, rated voltage (III/2): 150 V, contact surface: Sn, contact connection type: Pin, number of potentials: 5, number of rows: 1, number of positions: 5, number of connections: 5, product range: ICC...-H/...L3,5, pitch: 3.5 mm, mounting: Wave soldering, pin layout: Linear pinning, solder pin [P]: 2.8 mm, number of solder pins per potential: 1, plug-in system: ICC 1,5, Pin connector pattern alignment: Standard, locking: Snap-in locking, mounting method: without, type of packaging: Box packaging, Product with pin output on left side

ICC25-H/5L3,5-9005 - PCB header

1524091

<https://www.phoenixcontact.com/us/products/1524091>



PCB headers, color: black, nominal current: 8 A, rated voltage (III/2): 150 V, contact surface: Sn, contact connection type: Pin, number of potentials: 5, number of rows: 1, number of positions: 5, number of connections: 5, product range: ICC...-H/...L3,5, pitch: 3.5 mm, mounting: Wave soldering, pin layout: Linear pinning, solder pin [P]: 2.8 mm, number of solder pins per potential: 1, plug-in system: ICC 1,5, Pin connector pattern alignment: Standard, locking: Snap-in locking, mounting method: without, type of packaging: Box packaging, Product with pin output on left side

ICC25-TP2,5/4R5,0-7035 - PCB terminal block



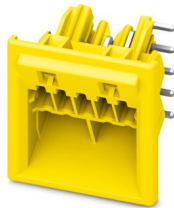
1474491

<https://www.phoenixcontact.com/us/products/1474491>

ICC25-H/5R3,5-1018 - PCB header

1357416

<https://www.phoenixcontact.com/us/products/1357416>



PCB headers, color: yellow, nominal current: 8 A, rated voltage (III/2): 150 V, contact surface: Sn, contact connection type: Pin, number of potentials: 5, number of rows: 1, number of positions: 5, number of connections: 5, product range: ICC...-H/...R3,5, pitch: 3.5 mm, mounting: Wave soldering, pin layout: Linear pinning, solder pin [P]: 2.8 mm, number of solder pins per potential: 1, plug-in system: ICC 1,5, Pin connector pattern alignment: Standard, locking: Snap-in locking, mounting method: without, type of packaging: Box packaging, Product with pin output on right side

ICC25-H/5R3,5-5015 - PCB header

1643166

<https://www.phoenixcontact.com/us/products/1643166>



PCB headers, color: blue, nominal current: 8 A, rated voltage (III/2): 150 V, contact surface: Sn, contact connection type: Pin, number of potentials: 5, number of rows: 1, number of positions: 5, number of connections: 5, product range: ICC...-H/...R3,5, pitch: 3.5 mm, mounting: Wave soldering, pin layout: Linear pinning, solder pin [P]: 2.8 mm, number of solder pins per potential: 1, plug-in system: ICC 1,5, Pin connector pattern alignment: Standard, locking: Snap-in locking, mounting method: without, type of packaging: Box packaging, Product with pin output on right side

ICC25-TP2,5/4R5,0-7035 - PCB terminal block



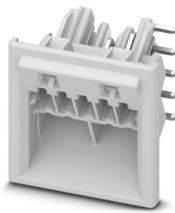
1474491

<https://www.phoenixcontact.com/us/products/1474491>

ICC25-H/5R3,5-7035 - PCB header

1084017

<https://www.phoenixcontact.com/us/products/1084017>

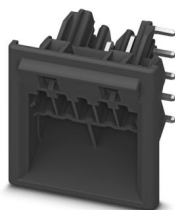


PCB headers, color: light gray, nominal current: 8 A, rated voltage (III/2): 150 V, contact surface: Sn, contact connection type: Pin, number of potentials: 5, number of rows: 1, number of positions: 5, number of connections: 5, product range: ICC...-H/...R3,5, pitch: 3.5 mm, mounting: Wave soldering, pin layout: Linear pinning, solder pin [P]: 2.8 mm, number of solder pins per potential: 1, plug-in system: ICC 1,5, Pin connector pattern alignment: Standard, locking: Snap-in locking, mounting method: without, type of packaging: Box packaging, Product with pin output on right side

ICC25-H/5R3,5-9005 - PCB header

1524100

<https://www.phoenixcontact.com/us/products/1524100>



PCB headers, color: black, nominal current: 8 A, rated voltage (III/2): 150 V, contact surface: Sn, contact connection type: Pin, number of potentials: 5, number of rows: 1, number of positions: 5, number of connections: 5, product range: ICC...-H/...R3,5, pitch: 3.5 mm, mounting: Wave soldering, pin layout: Linear pinning, solder pin [P]: 2.8 mm, number of solder pins per potential: 1, plug-in system: ICC 1,5, Pin connector pattern alignment: Standard, locking: Snap-in locking, mounting method: without, type of packaging: Box packaging, Product with pin output on right side

ICC25-TP2,5/4R5,0-7035 - PCB terminal block



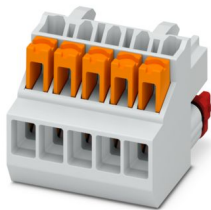
1474491

<https://www.phoenixcontact.com/us/products/1474491>

ICC25-PPC1,5/5-3,5-AA-7035 - PCB connector

1102108

<https://www.phoenixcontact.com/us/products/1102108>

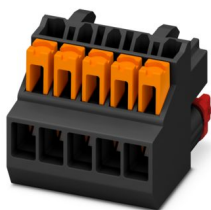


PCB connector, nominal cross section: 1.5 mm², color: light gray, nominal current: 8 A, rated voltage (III/2): 150 V, contact surface: Sn, contact connection type: Socket, number of potentials: 5, number of rows: 1, number of positions: 5, number of connections: 5, product range: ICC...-PPC1,5/...-3,5, pitch: 3.5 mm, connection method: Push-in spring connection, conductor/PCB connection direction: 0 °, locking clip: - Locking clip, plug-in system: ICC 1,5, locking: without, mounting method: without, type of packaging: packed in cardboard, Color of the spring lever: orange

ICC25-PPC1,5/5-3,5-AA-BK - PCB connector

1561123

<https://www.phoenixcontact.com/us/products/1561123>



PCB connector, nominal cross section: 1.5 mm², color: black, nominal current: 8 A, rated voltage (III/2): 150 V, contact surface: Sn, contact connection type: Socket, number of potentials: 5, number of rows: 1, number of positions: 5, number of connections: 5, product range: ICC...-PPC1,5/...-3,5, pitch: 3.5 mm, connection method: Push-in spring connection, conductor/PCB connection direction: 0 °, locking clip: - Locking clip, plug-in system: ICC 1,5, locking: without, mounting method: without, type of packaging: packed in cardboard, Color of the spring lever: orange

ICC25-TP2,5/4R5,0-7035 - PCB terminal block



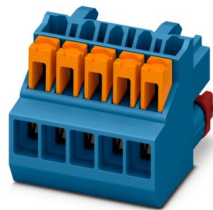
1474491

<https://www.phoenixcontact.com/us/products/1474491>

ICC25-PPC1,5/5-3,5-AA-5015 - PCB connector

1522851

<https://www.phoenixcontact.com/us/products/1522851>



PCB connector, nominal cross section: 1.5 mm², color: blue, nominal current: 8 A, rated voltage (III/2): 150 V, contact surface: Sn, contact connection type: Socket, number of potentials: 5, number of rows: 1, number of positions: 5, number of connections: 5, product range: ICC...-PPC1,5/...-3,5, pitch: 3.5 mm, connection method: Push-in spring connection, conductor/PCB connection direction: 0 °, locking clip: - Locking clip, plug-in system: ICC 1,5, locking: without, mounting method: without, type of packaging: packed in cardboard, Color of the spring lever: orange

ICC25-PSC1,5/5-3,5-AA-7035 - PCB connector

1084024

<https://www.phoenixcontact.com/us/products/1084024>



PCB connector, nominal cross section: 1.5 mm², color: light gray, nominal current: 8 A, rated voltage (III/2): 150 V, contact surface: Sn, contact connection type: Socket, number of potentials: 5, number of rows: 1, number of positions: 5, number of connections: 5, product range: ICC...-PSC1,5/...-3,5, pitch: 3.5 mm, connection method: Screw connection with tension sleeve, screw head form: L Slotted, conductor/PCB connection direction: 0 °, locking clip: - Locking clip, plug-in system: ICC 1,5, locking: without, mounting method: without, type of packaging: packed in cardboard

ICC25-TP2,5/4R5,0-7035 - PCB terminal block



1474491

<https://www.phoenixcontact.com/us/products/1474491>

ICC25-PSC1,5/5-3,5-AA-BK - PCB connector

1560994

<https://www.phoenixcontact.com/us/products/1560994>



PCB connector, nominal cross section: 1.5 mm², color: black, nominal current: 8 A, rated voltage (III/2): 150 V, contact surface: Sn, contact connection type: Socket, number of potentials: 5, number of rows: 1, number of positions: 5, number of connections: 5, product range: ICC...-PSC1,5/...-3,5, pitch: 3.5 mm, connection method: Screw connection with tension sleeve, screw head form: L Slotted, conductor/PCB connection direction: 0 °, locking clip: - Locking clip, plug-in system: ICC 1,5, locking: without, mounting method: without, type of packaging: packed in cardboard

HS LC-H-D3/ R1XC1 - Fiber optic

2202313

<https://www.phoenixcontact.com/us/products/2202313>



Multiple light guides, passive, rigid, Cylinder head, emission surface: planar, number of displays: 1, (1 row, 1 column), pitch: 5.08 mm, ESD protection: <10 kV, can be used for the ME, ME-MAX, ME-IO, ME PLC, and EH housing ranges (housing must be processed)

ICC25-TP2,5/4R5,0-7035 - PCB terminal block



1474491

<https://www.phoenixcontact.com/us/products/1474491>

HS LC-H-5X2/ R1XC1 - Fiber optic

2202314

<https://www.phoenixcontact.com/us/products/2202314>



Single light guide, passive, rigid, Rectangular, straight, emission surface: planar, number of displays: 1, (1 row, 1 column), ESD protection: <10 kV, can be used for the ME, ME-MAX, ME-IO, ME PLC, and EH housing ranges (housing must be processed)

HS LC-H-D3/ R2XC1-5,08 - Fiber optic

2202315

<https://www.phoenixcontact.com/us/products/2202315>



Multiple light guides, passive, rigid, Cylinder head, emission surface: planar, number of displays: 2, (2 rows, 1 column), pitch: 5.08 mm, ESD protection: <5 kV, can be used for the ME, ME-MAX, ME-IO, ME PLC, and EH housing ranges (housing must be processed)

ICC25-TP2,5/4R5,0-7035 - PCB terminal block



1474491

<https://www.phoenixcontact.com/us/products/1474491>

HS LC-H-D2/ R2XC1-2,54 - Fiber optic

2202316

<https://www.phoenixcontact.com/us/products/2202316>



Multiple light guides with glare protection, passive, rigid, Raised head, emission surface: spherical, number of displays: 2, (2 rows, 1 column), pitch: 2.54 mm, ESD protection: <8 kV, can be used for the ME, ME-MAX, ME-IO, ME PLC, and EH housing ranges (housing must be processed)

HS LC-H-D2/ R2XC2-2,54 - Fiber optic

2202317

<https://www.phoenixcontact.com/us/products/2202317>



Multiple light guides with glare protection, passive, rigid, Raised head, emission surface: spherical, number of displays: 4, (2 rows, 2 columns), pitch: 2.54 mm, ESD protection: <8 kV, can be used for the ME, ME-MAX, ME-IO, ME PLC, and EH housing ranges (housing must be processed)

ICC25-TP2,5/4R5,0-7035 - PCB terminal block



1474491

<https://www.phoenixcontact.com/us/products/1474491>

HS LC-H-D2/ R2XC4-2,54 - Fiber optic

2202531

<https://www.phoenixcontact.com/us/products/2202531>



Multiple light guides with glare protection, passive, rigid, Raised head, emission surface: spherical, number of displays: 8, (2 rows, 4 columns), pitch: 2.54 mm, ESD protection: <8 kV, can be used for the ME, ME-MAX, ME-IO, ME PLC, and EH housing ranges (housing must be processed)

HS LC-H-D2/ R2XC5-2,54 - Fiber optic

2202318

<https://www.phoenixcontact.com/us/products/2202318>



Multiple light guides with glare protection, passive, rigid, Raised head, emission surface: spherical, number of displays: 10, (2 rows, 5 columns), pitch: 2.54 mm, ESD protection: <8 kV, can be used for the ME, ME-MAX, ME-IO, ME PLC, and EH housing ranges (housing must be processed)

ICC25-TP2,5/4R5,0-7035 - PCB terminal block



1474491

<https://www.phoenixcontact.com/us/products/1474491>

HS LC-H-D2/ R2XC10-2,54 - Fiber optic

2202319

<https://www.phoenixcontact.com/us/products/2202319>



Multiple light guides with glare protection, passive, rigid, Raised head, emission surface: spherical, number of displays: 20, (2 rows, 10 columns), pitch: 2.54 mm, ESD protection: <8 kV, can be used for the ME, ME-MAX, ME-IO, ME PLC, and EH housing ranges (housing must be processed)

HS LC-H-D2/ R3XC1-2,54 - Fiber optic

1393207

<https://www.phoenixcontact.com/us/products/1393207>



Multiple light guides with glare protection, passive, rigid, Raised head, emission surface: spherical, number of displays: 3, (3 rows, 1 column), pitch: 2.54 mm, ESD protection: <8 kV, can be used for the ME, ME-MAX, ME-IO, ME PLC, and EH housing ranges (housing must be processed)

ICC25-TP2,5/4R5,0-7035 - PCB terminal block



1474491

<https://www.phoenixcontact.com/us/products/1474491>

HS LC-H-D2/ R3XC10-2,54 - Fiber optic

1104374

<https://www.phoenixcontact.com/us/products/1104374>



Multiple light guides with glare protection, passive, rigid, Raised head, emission surface: spherical, number of displays: 30, (3 rows, 10 columns), pitch: 2.54 mm, ESD protection: <8 kV, can be used for the ME, ME-MAX, ME-IO, ME PLC, and EH housing ranges (housing must be processed)

HS LC-H-D2/ R4XC4-2,54 - Fiber optic

2202532

<https://www.phoenixcontact.com/us/products/2202532>



Multiple light guides with glare protection, passive, rigid, Raised head, emission surface: spherical, number of displays: 16, (4 rows, 4 columns), pitch: 2.54 mm, ESD protection: <8 kV, can be used for the ME, ME-MAX, ME-IO, ME PLC, and EH housing ranges (housing must be processed)

ICC25-TP2,5/4R5,0-7035 - PCB terminal block



1474491

<https://www.phoenixcontact.com/us/products/1474491>

HS LC-H-D2/ R4XC2-2,54 - Fiber optic

2202320

<https://www.phoenixcontact.com/us/products/2202320>



Multiple light guides with glare protection, passive, rigid, Raised head, emission surface: spherical, number of displays: 8, (4 rows, 2 columns), pitch: 2.54 mm, ESD protection: <8 kV, can be used for the ME, ME-MAX, ME-IO, ME PLC, and EH housing ranges (housing must be processed)

HS LC-H-D2/ R4XC5-2,54 - Fiber optic

2202321

<https://www.phoenixcontact.com/us/products/2202321>



Multiple light guides with glare protection, passive, rigid, Raised head, emission surface: spherical, number of displays: 20, (4 rows, 5 columns), pitch: 2.54 mm, ESD protection: <8 kV, can be used for the ME, ME-MAX, ME-IO, ME PLC, and EH housing ranges (housing must be processed)

ICC25-TP2,5/4R5,0-7035 - PCB terminal block



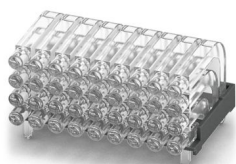
1474491

<https://www.phoenixcontact.com/us/products/1474491>

HS LC-H-D2/ R4XC9-2,54 - Fiber optic

2202322

<https://www.phoenixcontact.com/us/products/2202322>



Multiple light guides with glare protection, passive, rigid, Raised head, emission surface: spherical, number of displays: 36, (4 rows, 9 columns), pitch: 2.54 mm, ESD protection: <8 kV, can be used for the ME, ME-MAX, ME-IO, ME PLC, and EH housing ranges (housing must be processed)

HS LC-H-D2/ R4XC10-2,54 - Fiber optic

2202323

<https://www.phoenixcontact.com/us/products/2202323>



Multiple light guides with glare protection, passive, rigid, Raised head, emission surface: spherical, number of displays: 40, (4 rows, 10 columns), pitch: 2.54 mm, ESD protection: <8 kV, can be used for the ME, ME-MAX, ME-IO, ME PLC, and EH housing ranges (housing must be processed)

ICC25-TP2,5/4R5,0-7035 - PCB terminal block



1474491

<https://www.phoenixcontact.com/us/products/1474491>

HS LC-H-D2C/ R2XC1-2,54 - Fiber optic

1036658

<https://www.phoenixcontact.com/us/products/1036658>



Multiple light guides with glare protection, passive, rigid, Raised head, conical, emission surface: spherical, number of displays: 2, (2 rows, 1 column), pitch: 2.54 mm, ESD protection: <8 kV, can be used for the ME, ME-MAX, ME-IO, ME PLC, and EH housing ranges (housing must be processed)

HS LC-H-D2C/ R2XC2-2,54 - Fiber optic

1043044

<https://www.phoenixcontact.com/us/products/1043044>



Multiple light guides with glare protection, passive, rigid, Raised head, conical, emission surface: spherical, number of displays: 4, (2 rows, 2 columns), pitch: 2.54 mm, ESD protection: <8 kV, can be used for the ME, ME-MAX, ME-IO, ME PLC, and EH housing ranges (housing must be processed)

ICC25-TP2,5/4R5,0-7035 - PCB terminal block



1474491

<https://www.phoenixcontact.com/us/products/1474491>

HS LC-H-D2C/ R2XC4-2,54 - Fiber optic

1036724

<https://www.phoenixcontact.com/us/products/1036724>



Multiple light guides with glare protection, passive, rigid, Raised head, conical, emission surface: spherical, number of displays: 8, (2 rows, 4 columns), pitch: 2.54 mm, ESD protection: <8 kV, can be used for the ME, ME-MAX, ME-IO, ME PLC, and EH housing ranges (housing must be processed)

HS LC-H-D2C/ R2XC5-2,54 - Fiber optic

1071310

<https://www.phoenixcontact.com/us/products/1071310>



Multiple light guides with glare protection, passive, rigid, Raised head, conical, emission surface: spherical, number of displays: 10, (2 rows, 5 columns), pitch: 2.54 mm, ESD protection: <8 kV, can be used for the ME, ME-MAX, ME-IO, ME PLC, and EH housing ranges (housing must be processed)

ICC25-TP2,5/4R5,0-7035 - PCB terminal block



1474491

<https://www.phoenixcontact.com/us/products/1474491>

HS LC-H-D2C/ R2XC10-2,54 - Fiber optic

1071314

<https://www.phoenixcontact.com/us/products/1071314>

Multiple light guides with glare protection, passive, rigid, Raised head, conical, emission surface: spherical, number of displays: 20, (2 rows, 10 columns), pitch: 2.54 mm, ESD protection: <8 kV, can be used for the ME, ME-MAX, ME-IO, ME PLC, and EH housing ranges (housing must be processed)



HS LC-H-D2C/ R4XC2-2,54 - Fiber optic

1071316

<https://www.phoenixcontact.com/us/products/1071316>

Multiple light guides with glare protection, passive, rigid, Raised head, conical, emission surface: spherical, number of displays: 8, (4 rows, 2 columns), pitch: 2.54 mm, ESD protection: <8 kV, can be used for the ME, ME-MAX, ME-IO, ME PLC, and EH housing ranges (housing must be processed)



ICC25-TP2,5/4R5,0-7035 - PCB terminal block



1474491

<https://www.phoenixcontact.com/us/products/1474491>

HS LC-H-D2C/ R4XC4-2,54 - Fiber optic

1036727

<https://www.phoenixcontact.com/us/products/1036727>



Multiple light guides with glare protection, passive, rigid, Raised head, conical, emission surface: spherical, number of displays: 16, (4 rows, 4 columns), pitch: 2.54 mm, ESD protection: <8 kV, can be used for the ME, ME-MAX, ME-IO, ME PLC, and EH housing ranges (housing must be processed)

HS LC-H-D2C/ R4XC5-2,54 - Fiber optic

1071318

<https://www.phoenixcontact.com/us/products/1071318>



Multiple light guides with glare protection, passive, rigid, Raised head, conical, emission surface: spherical, number of displays: 20, (4 rows, 5 columns), pitch: 2.54 mm, ESD protection: <8 kV, can be used for the ME, ME-MAX, ME-IO, ME PLC, and EH housing ranges (housing must be processed)

ICC25-TP2,5/4R5,0-7035 - PCB terminal block



1474491

<https://www.phoenixcontact.com/us/products/1474491>

HS LC-H-D2C/ R4XC9-2,54 - Fiber optic

1071321

<https://www.phoenixcontact.com/us/products/1071321>

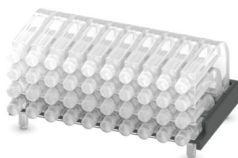


Multiple light guides with glare protection, passive, rigid, Raised head, conical, emission surface: spherical, number of displays: 36, (4 rows, 9 columns), pitch: 2.54 mm, ESD protection: <8 kV, can be used for the ME, ME-MAX, ME-IO, ME PLC, and EH housing ranges (housing must be processed)

HS LC-H-D2C/ R4XC10-2,54 - Fiber optic

1071329

<https://www.phoenixcontact.com/us/products/1071329>



Multiple light guides with glare protection, passive, rigid, Raised head, conical, emission surface: spherical, number of displays: 40, (4 rows, 10 columns), pitch: 2.54 mm, ESD protection: <8 kV, can be used for the ME, ME-MAX, ME-IO, ME PLC, and EH housing ranges (housing must be processed)

ICC25-TP2,5/4R5,0-7035 - PCB terminal block



1474491

<https://www.phoenixcontact.com/us/products/1474491>

HS LC-H-D3PL/ R2XC2-5,08 - Fiber optic

1474395

<https://www.phoenixcontact.com/us/products/1474395>



Multiple light guides with glare protection, passive, rigid, Cylinder head, emission surface: planar, number of displays: 4, (2 rows, 2 columns), pitch: 5.08 mm, ESD protection: <8 kV, can be used for the ME, ME-MAX, ME-IO, ME PLC, and EH housing ranges (housing must be processed)

HS LC-H-D3PL/ R2XC3-5,08 - Fiber optic

1474396

<https://www.phoenixcontact.com/us/products/1474396>



Multiple light guides with glare protection, passive, rigid, Cylinder head, emission surface: planar, number of displays: 6, (2 rows, 3 columns), pitch: 5.08 mm, ESD protection: <8 kV, can be used for the ME, ME-MAX, ME-IO, ME PLC, and EH housing ranges (housing must be processed)

ICC25-TP2,5/4R5,0-7035 - PCB terminal block



1474491

<https://www.phoenixcontact.com/us/products/1474491>

HS LC-H-D3PL/ R2XC4-5,08 - Fiber optic

1474397

<https://www.phoenixcontact.com/us/products/1474397>



Multiple light guides with glare protection, passive, rigid, Cylinder head, emission surface: planar, number of displays: 8, (2 rows, 4 columns), pitch: 5.08 mm, ESD protection: <8 kV, can be used for the ME, ME-MAX, ME-IO, ME PLC, and EH housing ranges (housing must be processed)

HS LC-H-D3PL/ R2XC5-5,08 - Fiber optic

1474399

<https://www.phoenixcontact.com/us/products/1474399>



Multiple light guides with glare protection, passive, rigid, Cylinder head, emission surface: planar, number of displays: 10, (2 rows, 5 columns), pitch: 5.08 mm, ESD protection: <8 kV, can be used for the ME, ME-MAX, ME-IO, ME PLC, and EH housing ranges (housing must be processed)

ICC25-TP2,5/4R5,0-7035 - PCB terminal block

1474491

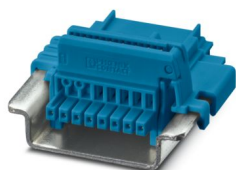
<https://www.phoenixcontact.com/us/products/1474491>



TBUS8-25,0-PPPPPPPP-5015 - DIN rail bus connector

1071426

<https://www.phoenixcontact.com/us/products/1071426>

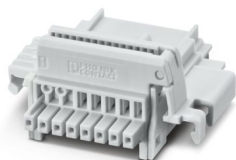


DIN rail bus connector, color: blue, nominal current: 6 A (parallel contacts), rated voltage (III/2): 32 V, number of positions: 8, product range: TBUS8-25..., pitch: 2.54 mm, mounting: DIN rail mounting, locking: without, mounting method: without, type of packaging: packed in cardboard, Item with gold-plated contacts, bus connectors for connecting with electronics housings, 8 parallel contacts

TBUS8-25,0-PPPPPPPP-7035 - DIN rail bus connector

2202891

<https://www.phoenixcontact.com/us/products/2202891>



DIN rail bus connector, color: light gray, nominal current: 6 A (parallel contacts), rated voltage (III/2): 32 V, number of positions: 8, product range: TBUS8-25..., pitch: 2.54 mm, mounting: DIN rail mounting, locking: without, mounting method: without, type of packaging: packed in cardboard, Item with gold-plated contacts, bus connectors for connecting with electronics housings, 8 parallel contacts

ICC25-TP2,5/4R5,0-7035 - PCB terminal block



1474491

<https://www.phoenixcontact.com/us/products/1474491>

TBUS8-25,0-PPPPPPPP-9005 - DIN rail bus connector

1072478

<https://www.phoenixcontact.com/us/products/1072478>

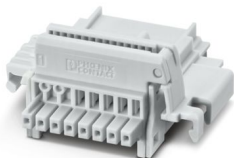


DIN rail bus connector, color: black, nominal current: 6 A (parallel contacts), rated voltage (III/2): 32 V, number of positions: 8, product range: TBUS8-25..., pitch: 2.54 mm, mounting: DIN rail mounting, locking: without, mounting method: without, type of packaging: packed in cardboard, Item with gold-plated contacts, bus connectors for connecting with electronics housings, 8 parallel contacts

TBUS8-25,0-PPPPPPPS-7035 - DIN rail bus connector

2202890

<https://www.phoenixcontact.com/us/products/2202890>



DIN rail bus connector, color: light gray, nominal current: 6 A, 4 A (parallel contacts) (Serial contacts), rated voltage (III/2): 32 V, number of positions: 8, product range: TBUS8-25..., pitch: 2.54 mm, mounting: DIN rail mounting, locking: without, mounting method: without, type of packaging: packed in cardboard, Item with gold-plated contacts, bus connectors for connecting with electronics housings, 7 parallel contacts/1 serial contact

ICC25-TP2,5/4R5,0-7035 - PCB terminal block



1474491

<https://www.phoenixcontact.com/us/products/1474491>

TBUS8-25,0-PPPPPPPS-9005 - DIN rail bus connector

1072472

<https://www.phoenixcontact.com/us/products/1072472>

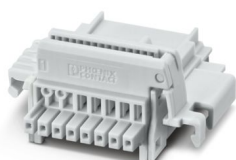


DIN rail bus connector, color: black, nominal current: 6 A, 4 A (parallel contacts) (Serial contacts), rated voltage (III/2): 32 V, number of positions: 8, product range: TBUS8-25..., pitch: 2.54 mm, mounting: DIN rail mounting, locking: without, mounting method: without, type of packaging: packed in cardboard, Item with gold-plated contacts, bus connectors for connecting with electronics housings, 7 parallel contacts/1 serial contact

TBUS8-25,0-PPPPPPSS-7035 - DIN rail bus connector

2202895

<https://www.phoenixcontact.com/us/products/2202895>



DIN rail bus connector, color: light gray, nominal current: 6 A, 4 A (parallel contacts) (Serial contacts), rated voltage (III/2): 32 V, number of positions: 8, product range: TBUS8-25..., pitch: 2.54 mm, mounting: DIN rail mounting, locking: without, mounting method: without, type of packaging: packed in cardboard, Item with gold-plated contacts, bus connectors for connecting with electronics housings, 6 parallel contacts/2 serial contacts

ICC25-TP2,5/4R5,0-7035 - PCB terminal block



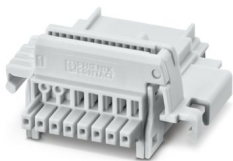
1474491

<https://www.phoenixcontact.com/us/products/1474491>

TBUS8-25,0-PPPPSSSS-7035 - DIN rail bus connector

1156781

<https://www.phoenixcontact.com/us/products/1156781>



DIN rail bus connector, color: light gray, nominal current: 6 A, 4 A (parallel contacts) (Serial contacts), rated voltage (III/2): 32 V, number of positions: 8, product range: TBUS8-25..., pitch: 2.54 mm, mounting: DIN rail mounting, locking: without, mounting method: without, type of packaging: packed in cardboard, Item with gold-plated contacts, bus connectors for connecting with electronics housings, 4 parallel contacts/4 serial contacts

TBUS8-25,0-PPPPSSSS-9005 - DIN rail bus connector

1174596

<https://www.phoenixcontact.com/us/products/1174596>



DIN rail bus connector, color: black, nominal current: 6 A, 4 A (parallel contacts) (Serial contacts), rated voltage (III/2): 32 V, number of positions: 8, product range: TBUS8-25..., pitch: 2.54 mm, mounting: DIN rail mounting, locking: without, mounting method: without, type of packaging: packed in cardboard, Item with gold-plated contacts, bus connectors for connecting with electronics housings, 4 parallel contacts/4 serial contacts

ICC25-TP2,5/4R5,0-7035 - PCB terminal block



1474491

<https://www.phoenixcontact.com/us/products/1474491>

TBUS8-25-BRIDGE-7035 - DIN rail bus connector

1387008

<https://www.phoenixcontact.com/us/products/1387008>

DIN rail bus adapter for ICS, overall width: 25 mm, 8 parallel positions, color: light grey (similar to RAL 7035)

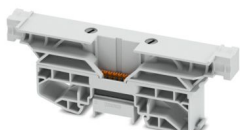


TBUS8-SPL-KIT-7035 - DIN rail bus connector

1488805

<https://www.phoenixcontact.com/us/products/1488805>

DIN rail bus connector, nominal cross section: 0.5 mm², color: light gray, nominal current: 6 A (parallel contacts), rated voltage (III/2): 32 V, contact surface: Au, contact connection type: Socket, number of potentials: 8, number of positions: 8, number of connections: 8, product range: TBUS8..2,54, pitch: 2.54 mm, connection method: Push-in spring connection, mounting: DIN rail mounting, conductor/PCB connection direction: 0 °, locking: Snap-in locking, mounting method: without, type of packaging: packed in cardboard, Integrated end bracket function



ICC25-TP2,5/4R5,0-7035 - PCB terminal block

1474491

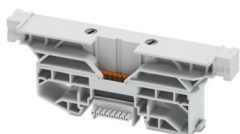
<https://www.phoenixcontact.com/us/products/1474491>



TBUS8-TAP-KIT-7035 - DIN rail bus connector

1488806

<https://www.phoenixcontact.com/us/products/1488806>



DIN rail bus connector, nominal cross section: 0.5 mm², color: light gray, nominal current: 6 A (parallel contacts), rated voltage (III/2): 32 V, contact surface: Au, contact connection type: Socket, number of potentials: 8, number of positions: 8, number of connections: 8, product range: TBUS8..2,54, pitch: 2.54 mm, connection method: Push-in spring connection, mounting: DIN rail mounting, conductor/PCB connection direction: 0 °, locking: Snap-in locking, mounting method: without, type of packaging: packed in cardboard, Integrated end bracket function

MPS-MT 1-S4-B RD - Accessories

1982800

<https://www.phoenixcontact.com/us/products/1982800>

Test plug terminal block



ICC25-TP2,5/4R5,0-7035 - PCB terminal block



1474491

<https://www.phoenixcontact.com/us/products/1474491>

CRIMPFOX 6 - Crimping pliers

1212034

<https://www.phoenixcontact.com/us/products/1212034>



Crimping pliers, for ferrules without insulating collar according to DIN 46228 Part 1 and ferrules with insulating collar according to DIN 46228 Part 4, 0.25 mm² ... 6.0 mm², lateral entry, trapezoidal crimp

SZS 0,4X2,5 VDE - Screwdriver

1205037

<https://www.phoenixcontact.com/us/products/1205037>



Screwdriver, slot-headed, VDE insulated, size: 0.4 x 2.5 x 80 mm, 2-component grip, with non-slip grip

Phoenix Contact 2025 © - all rights reserved
<https://www.phoenixcontact.com>

Phoenix Contact USA
586 Fulling Mill Road
Middletown, PA 17057, United States
(+717) 944-1300
info@phoenixcon.com