

# QPD W 4PE2,5 9-16 M20 FC EX - Panel feed-through



1411399

<https://www.phoenixcontact.com/us/products/1411399>

Please be informed that the data shown in this PDF document is generated from our online catalog. Please find the complete data in the user documentation. Our general terms of use for downloads are valid.



QUICKON panel feed-through for the hazardous area, 4+PE-pos., 1.0 mm<sup>2</sup> ... 2.5 mm<sup>2</sup>/with QUICKON nut, black, for cable diameter 9 mm ... 16 mm, M20 connection thread with 5 slip-on contacts for slip-on sleeves.

## Your advantages

- Innovative and time saving - QUICKON fast connection for time saving of up to 80 % for on-site connection
- Robust throughout: housing with IP68/IP69K and IK07 protection for a wide range of applications
- Safer connection with mechanical coding to protect against mismatching, and touch-proof protection in accordance with DIN EN 0105
- Efficient - by using panel feed-throughs, devices no longer need to be opened in order to connect cables

## Commercial data

|                                      |               |
|--------------------------------------|---------------|
| Item number                          | 1411399       |
| Packing unit                         | 1 pc          |
| Minimum order quantity               | 25 pc         |
| Product key                          | AF6ACB        |
| GTIN                                 | 4046356932028 |
| Weight per piece (including packing) | 53.2 g        |
| Weight per piece (excluding packing) | 53.2 g        |
| Country of origin                    | PL            |

## Technical data

### Notes

|         |  |
|---------|--|
| General | Intended for applications in intrinsically safe circuits in accordance with EN 60079-11 and EN 60079-14. |
|---------|--|

### Product properties

|                                    |                    |
|------------------------------------|--------------------|
| Product type                       | Panel feed-through |
| Product family                     | QPD                |
| Type                               | QPD 5x2,5          |
| Number of positions                | 5                  |
| Connection profile                 | 4+PE               |
| Position marking                   | 1, 2, 3, N, PE     |
| Number of connections              | 10                 |
| Number of connections per position | 1                  |
| Coding                             | coded              |

### Insulation characteristics

|                      |     |
|----------------------|-----|
| Overvoltage category | III |
| Degree of pollution  | 3   |

### Connection data

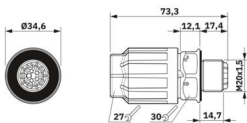
#### Connection technology

|   |                  |
|---|------------------|
| Connection method On the device side                                  | Spade connection |
| Connection method On the field side                                   | IDC connection   |
| Frequency of connections between conductors of the same cross section | max. 10          |

#### Conductor connection

|                                  |   |
|----------------------------------|---|
| Conductor cross section flexibel | 1 mm <sup>2</sup> ... 2.5 mm <sup>2</sup> |
| Conductor cross section solid    | 1 mm <sup>2</sup> ... 2.5 mm <sup>2</sup> |
| Connection cross section AWG     | 16 ... 14                                 |
| Tightening torque Union nut      | 10 Nm                                     |
| Tightening torque Locking nut    | 5 Nm                                      |
| Wrench size Union nut            | 27 mm                                     |
| Wrench size Locking nut          | 30 mm                                     |

### Dimensions

|                     |  |
|---------------------|--|
| Dimensional drawing |  |
|---------------------|--|

1411399

<https://www.phoenixcontact.com/us/products/1411399>

|                          |         |
|--------------------------|---------|
| Width                    | 34.6 mm |
| Height                   | 34.6 mm |
| Length                   | 71.8 mm |
| Diameter                 | 34.6 mm |
| Wrench size              | 27 mm   |
| Wrench size for mounting | 27 mm   |

## Electrical properties

|                             |        |
|-----------------------------|--------|
| Rated surge voltage (II/2)  | 8 kV   |
| Rated surge voltage (III/2) | 8 kV   |
| Rated surge voltage (III/3) | 6 kV   |
| Contact resistance          | < 3 mΩ |
| Rated voltage (III/3)       | 60 V   |
| Nominal voltage $U_N$       | 60 V   |
| Nominal current $I_N$       | 20 A   |

## Material specifications

|  |                   |
|--|-------------------|
| Material Housing                       | PA                |
| Material Contact                       | Cu                |
| Material Contact surface               | silver-plated     |
| Flammability rating according to UL 94 | V0                |
| Material wire insulation               | PVC/PE/TPE/rubber |

## Cable/line

|   |                                    |
|---|------------------------------------|
| Structure of individual litz in acc. with VDE 0295 / smallest wire diameter | VDE 0295 class 1 to 6/min. 0.15 mm |
| Wire diameter including insulation  | 2 mm ... 3.8 mm                    |
| Position marking  | 1, 2, 3, N, PE                     |
| Material wire insulation  | PVC/PE/TPE/rubber                  |

## Mounting

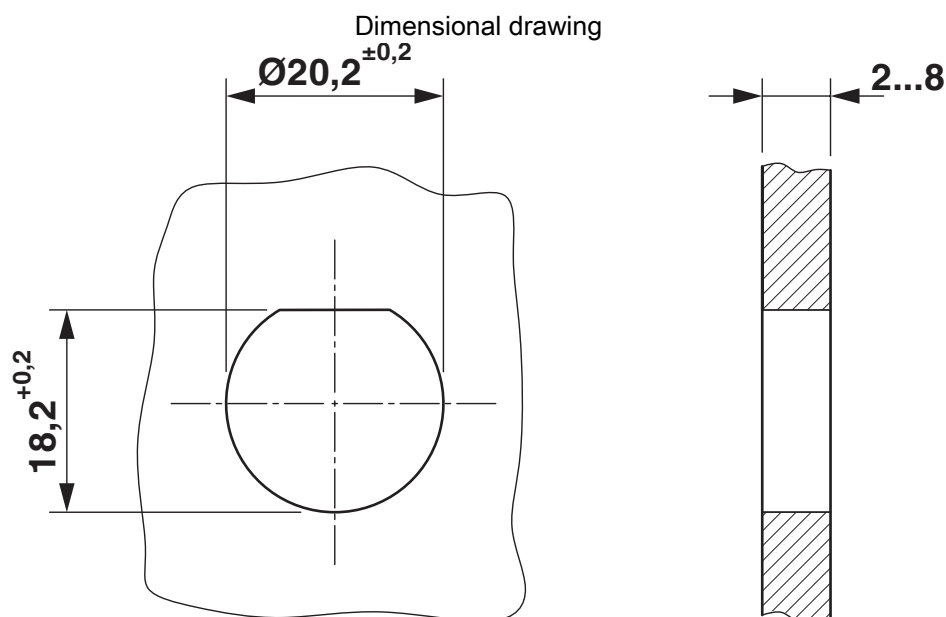
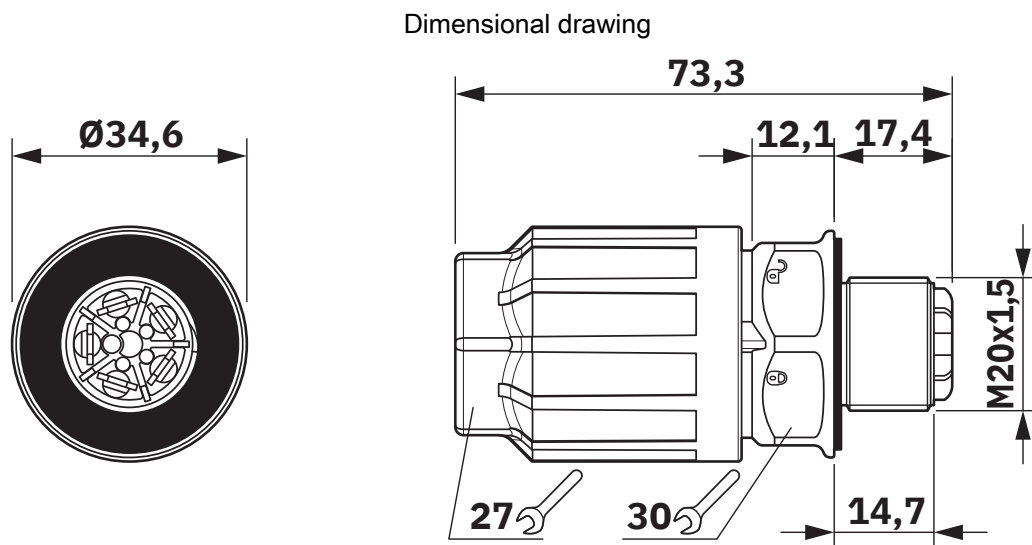
|               |                    |
|---------------|--------------------|
| Mounting type | Front mounting M20 |
|---------------|--------------------|

## Environmental and real-life conditions

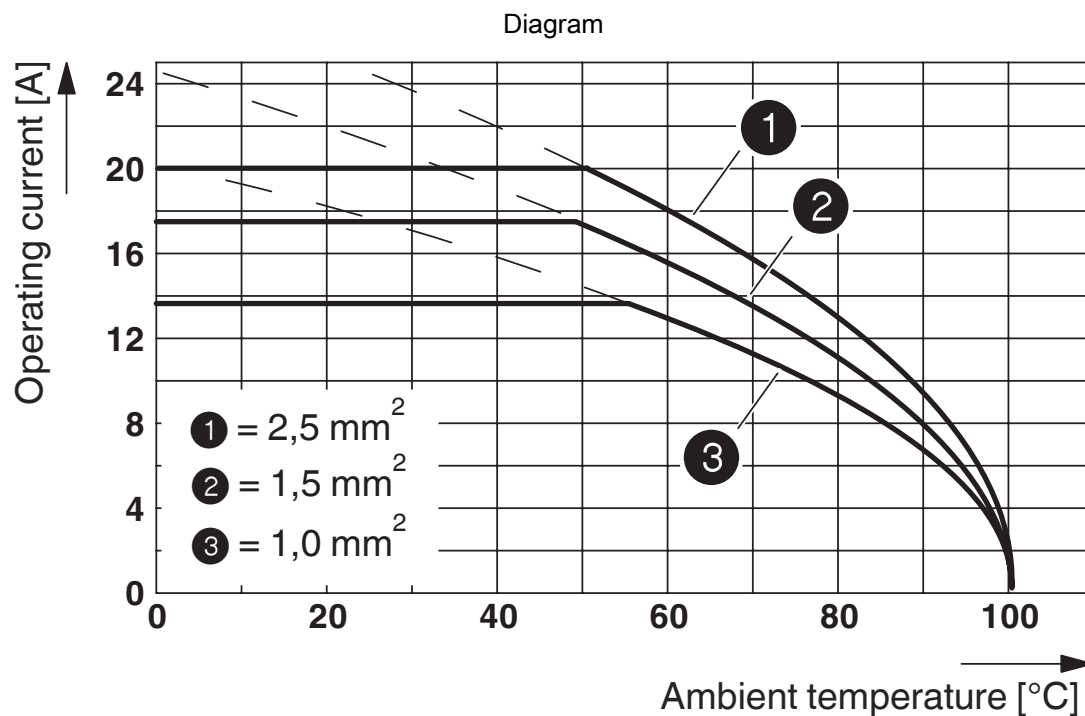
### Ambient conditions

|   |                   |
|---|-------------------|
| Degree of protection                    | IP66              |
|   | IP68 (2 m / 24 h) |
|   | IP69K             |
| Impact strength                         | IK07              |
| Ambient temperature (operation)         | -40 °C ... 100 °C |
| Temperature when conductor connected    | -5 °C ... 50 °C   |
| Ambient temperature (storage/transport) | -40 °C ... 80 °C  |

## Drawings



Housing cutout



# QPD W 4PE2,5 9-16 M20 FC EX - Panel feed-through



1411399

<https://www.phoenixcontact.com/us/products/1411399>

## Classifications

### ECLASS

|             |          |
|-------------|----------|
| ECLASS-13.0 | 27440602 |
| ECLASS-15.0 | 27440602 |

### UNSPSC

|             |          |
|-------------|----------|
| UNSPSC 21.0 | 39121522 |
|-------------|----------|

1411399

<https://www.phoenixcontact.com/us/products/1411399>

## Environmental product compliance

### EU RoHS

|   |                    |
|---|--------------------|
| Fulfills EU RoHS substance requirements | Yes, No exemptions |
|---|--------------------|

### China RoHS

|  |  |
|--|--|
| Environment friendly use period (EFUP) | EFUP-E                                   |
|  | No hazardous substances above the limits |

### EU REACH SVHC

|                                     |                            |
|-------------------------------------|----------------------------|
| REACH candidate substance (CAS No.) | No substance above 0.1 wt% |
|-------------------------------------|----------------------------|

Phoenix Contact 2025 © - all rights reserved

<https://www.phoenixcontact.com>

Phoenix Contact USA  
586 Fulling Mill Road  
Middletown, PA 17057, United States  
(+717) 944-1300  
[info@phoenixcon.com](mailto:info@phoenixcon.com)