

MC 1000T-MM SC - FO converters

1329827

<https://www.phoenixcontact.com/us/products/1329827>



Please be informed that the data shown in this PDF document is generated from our online catalog. Please find the complete data in the user documentation. Our general terms of use for downloads are valid.



Fiber optic converter with SC duplex connection (1310 nm) for 100Base-TX to multimode fiber optics, DIN rail mountable, extended temperature range, redundant power supply.

Product description

The MC 1000T-MM SC media converter comes with one 10/100 Mbps twisted-pair RJ45 port and one 100 Mbps multimode fiber optics port with an SC-duplex connector and wide operating temperature range.

Your advantages

- Auto MDI/MDI-X switch-over
- Data transfer rates of 100 Mbps
- Link fault pass through (LFPT) function for easy connection monitoring

Commercial data

| | |
|--------------------------------------|---------------|
| Item number | 1329827 |
| Packing unit | 1 pc |
| Minimum order quantity | 1 pc |
| Sales key | DN06 |
| Product key | DNC314 |
| GTIN | 4063151625511 |
| Weight per piece (including packing) | 270.6 g |
| Weight per piece (excluding packing) | 180 g |
| Customs tariff number | 85176200 |
| Country of origin | CA |

MC 1000T-MM SC - FO converters



1329827

<https://www.phoenixcontact.com/us/products/1329827>

Technical data

Notes

Note on application

| | |
|---------------------|-------------------------|
| Note on application | Only for industrial use |
|---------------------|-------------------------|

Utilization restriction

| | |
|----------|---|
| EMC note | EMC: class A product, see manufacturer's declaration in the download area |
|----------|---|

Product properties

| | |
|----------------|--|
| Product type | Media converter |
| Product family | MC 1000T |
| MTTF | 68.5 Years (MIL-HDBK-217F standard, temperature 25°C, operating cycle 100%) |
| | 508.3 Years (SN 29500 standard, temperature 25°C, operating cycle 21%) |
| | 551.7 Years (Telcordia standard, temperature 25 °C, operating cycle 100 % (7 days a week, 24 hours a day)) |

Electrical properties

Supply

| | |
|-----------------------------|-------------------------|
| Supply voltage range | 12 V DC ... 57 V DC |
| Nominal supply voltage | 24 V DC |
| | 48 V DC |
| Typical current consumption | 20 mA (24 V DC) |
| Max. current consumption | 170 mA (12 V DC, 75 °C) |

Output data

Signal

| | |
|-----------------------|--|
| Voltage output signal | 12 V DC ... 48 V DC (depending on the input voltage) |
| Current output signal | 100 mA |

Connection data

Supply

| | |
|---|---------------------------|
| Connection method | Push-in spring connection |
| Single conductor/terminal point, rigid | 0.2 mm² ... 2.5 mm² |
| Single-wire/terminal point, flexible | 0.2 mm² ... 2.5 mm² |
| Conductor cross-section, flexible [AWG] | 24 ... 12 |
| Stripping length | 10.00 mm |

Interfaces

| | |
|--------|----------|
| Signal | Ethernet |
|--------|----------|

MC 1000T-MM SC - FO converters



1329827

<https://www.phoenixcontact.com/us/products/1329827>

Data: optical FO

| | |
|---|---|
| Transmit capacity, minimum | -20 dBm (62.5/125 µm, multimode fiberglass) |
| | -23.5 dBm (50/125 µm, multimode fiberglass) |
| Transmit capacity, maximum | -14 dBm |
| Transmission length incl. 3 dB system reserve | 2 km |
| Connection method | SC duplex |
| Wavelength | 1310 nm |
| Minimum receiver sensitivity | -32 dBm |
| Maximum receiver sensitivity | -8 dBm |
| Transmission medium | Multi-mode fiberglass |

Data: Ethernet interface, 100Base-T(X) in accordance with IEEE 802.3

| | |
|------------------------|--------------------------------|
| Transmission speed | 10/100 Mbps |
| Connection method | RJ45 jack, shielded |
| No. of channels | 1 |
| Transmission length | 100 m (twisted pair, shielded) |
| Transmission medium | Copper |
| Signal LEDs | LNK/ACT, SPD, Err, US, US2 |
| Auto-negotiation modes | Auto |
| Link through | Link fault pass through |
| MDI-/MDI-X switchover | Auto-MDI(X) |

Dimensions

| | |
|--------|---------|
| Width | 22.5 mm |
| Height | 123 mm |
| Depth | 90 mm |

Material specifications

| | |
|--------------------|---------------------------------|
| Material (Housing) | Polyamide fiberglass reinforced |
| | Aluminum |
| | Sheet steel |

Cable/line

FO cable

| | |
|-------------|-------------|
| Fiber types | 50/125 µm |
| | 62.5/125 µm |
| | Fiberglass |

Mechanical tests

| | |
|--|------------------------------------|
| Vibration resistance in accordance with EN 60068-2-6/IEC 60068-2-6 | : 5g, 150 Hz, Criterion 3 |
| Shock in accordance with EN 60068-2-27/IEC 60068-2-27 | : 30g, 11 ms half-sine shock pulse |

Environmental and real-life conditions

MC 1000T-MM SC - FO converters



1329827

<https://www.phoenixcontact.com/us/products/1329827>

Ambient conditions

| | |
|---|--|
| Degree of protection | IP30 |
| Ambient temperature (operation) | -40 °C ... 75 °C |
| Ambient temperature (storage/transport) | -40 °C ... 85 °C |
| Altitude | ≤ 2000 m (in acc. with UL) |
| Permissible humidity (operation) | 10 % ... 95 % (non-condensing) |
| Shock | 300 m/s ² , 11 ms (IEC 60068-2) |

Approvals

CE

| | |
|-------------|--------------|
| Certificate | CE-compliant |
|-------------|--------------|

UL, USA/Canada

| | |
|----------------|--|
| Identification | Class I, Division 2, Groups A, B, C, and D, T4 |
|----------------|--|

UL data

| | |
|-----------------------------|--------|
| Primary rated current range | 170 mA |
|-----------------------------|--------|

EMC data

| | |
|-------------------------------|---|
| Electromagnetic compatibility | Conformance with EMC Directive 2014/30/EU |
|-------------------------------|---|

Electrostatic discharge

| | |
|-----------------------|--------------|
| Standards/regulations | EN 61000-4-2 |
|-----------------------|--------------|

Electrostatic discharge

| | |
|----------|-------------|
| Comments | Criterion B |
|----------|-------------|

Electromagnetic HF field

| | |
|-----------------------|--------------|
| Standards/regulations | EN 61000-4-3 |
|-----------------------|--------------|

Electromagnetic HF field

| | |
|----------|-------------|
| Comments | Criterion A |
|----------|-------------|

Fast transients (burst)

| | |
|-----------------------|--------------|
| Standards/regulations | EN 61000-4-4 |
|-----------------------|--------------|

Fast transients (burst)

| | |
|----------|-------------|
| Comments | Criterion A |
|----------|-------------|

Surge current load (surge)

| | |
|-----------------------|--------------|
| Standards/regulations | EN 61000-4-5 |
|-----------------------|--------------|

Surge current load (surge)

| | |
|----------|-------------|
| Comments | Criterion B |
|----------|-------------|

Conducted interference

| | |
|-----------------------|--------------|
| Standards/regulations | EN 61000-4-6 |
|-----------------------|--------------|

Conducted interference

MC 1000T-MM SC - FO converters



1329827

<https://www.phoenixcontact.com/us/products/1329827>

| Comments | Criterion A |
|-----------------------|-------------|
| Emitted interference | |
| Standards/regulations | EN 55032 |

Mounting

| | |
|-----------------------|--|
| Mounting type | DIN rail mounting |
| Mounting position | on horizontal DIN rail NS 35 in acc. with EN 60715 |
| Useable DIN rail type | DIN rail: 35 mm |


MC 1000T-MM SC - FO converters



1329827

<https://www.phoenixcontact.com/us/products/1329827>

Approvals

 To download certificates, visit the product detail page: <https://www.phoenixcontact.com/us/products/1329827>



cULus Listed

Approval ID: E238705

BSH

Approval ID: BSH Nr. 1176



cULus Listed

Approval ID: E196811

MC 1000T-MM SC - FO converters



1329827

<https://www.phoenixcontact.com/us/products/1329827>

Classifications

ECLASS

| | |
|-------------|----------|
| ECLASS-13.0 | 19170411 |
| ECLASS-15.0 | 19170411 |

ETIM

| | |
|----------|----------|
| ETIM 9.0 | EC001467 |
|----------|----------|

UNSPSC

| | |
|-------------|----------|
| UNSPSC 21.0 | 43223323 |
|-------------|----------|

MC 1000T-MM SC - FO converters



1329827

<https://www.phoenixcontact.com/us/products/1329827>

Environmental product compliance

| | |
|---|--|
| EU RoHS | |
| Fulfills EU RoHS substance requirements | Yes, No exemptions |
| China RoHS | |
| Environment friendly use period (EFUP) | EFUP-E |
| | No hazardous substances above the limits |
| EU REACH SVHC | |
| REACH candidate substance (CAS No.) | No substance above 0.1 wt% |

MC 1000T-MM SC - FO converters



1329827

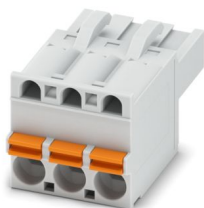
<https://www.phoenixcontact.com/us/products/1329827>

Accessories

FKCT 2,5/ 3-ST KMGY - PCB connector

1998263

<https://www.phoenixcontact.com/us/products/1998263>



PCB connector, nominal cross section: 2.5 mm², color: light gray, nominal current: 12 A, rated voltage (III/2): 320 V, contact surface: Sn, contact connection type: Socket, number of potentials: 3, number of rows: 1, number of positions: 3, number of connections: 3, product range: FKCT 2,5/...-ST, pitch: 5 mm, connection method: Push-in spring connection, conductor/PCB connection direction: 0 °, locking clip: - Locking clip, plug-in system: COMBICON MSTB 2,5, locking: without, mounting method: without, type of packaging: packed in cardboard

DT-LAN-CAT.6+ - Surge protection device

2881007

<https://www.phoenixcontact.com/us/products/2881007>



Surge protection in accordance with Class E_A (CAT6_A), for Gigabit Ethernet (up to 10 Gbps), token ring, FDDI/CDDI, ISDN, DS1. Suitable for Power over Ethernet (PoE++/4PPoE) "Mode A" and "Mode B". RJ45 intermediate plug with separate grounding cable and ground connection snap-on foot for NS 35 DIN rails. Products with similar requirements: DT-LAN-CAT.6A (2908726) und D-LAN-CAT.5-HC (2800763).

MC 1000T-MM SC - FO converters



1329827

<https://www.phoenixcontact.com/us/products/1329827>

FL DIN-RAIL ADAPTER 22.5 - Mounting panel

1085485

<https://www.phoenixcontact.com/us/products/1085485>



The FL DIN-RAIL ADAPTER 22.5 is designed to allow products 22.5 mm wide to be mounted flush to a standard 35 mm DIN rail, in any orientation.

FL PANEL ADAPTER 22.5 - Mounting panel

1085488

<https://www.phoenixcontact.com/us/products/1085488>



The FL PANEL ADAPTER 22.5 is designed to allow products 22.5 mm wide to be mounted flush to a panel, in any orientation.

MC 1000T-MM SC - FO converters

1329827

<https://www.phoenixcontact.com/us/products/1329827>

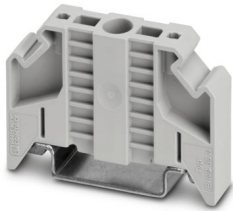


E/NS 35 N - End bracket

0800886

<https://www.phoenixcontact.com/us/products/0800886>

End clamp, width: 9.5 mm, color: gray



FL CAT5 PATCH 0,5 - Patch cable

2832263

<https://www.phoenixcontact.com/us/products/2832263>

Patch cable, CAT5, assembled, 0.5 m



MC 1000T-MM SC - FO converters

1329827

<https://www.phoenixcontact.com/us/products/1329827>



FL CAT5 PATCH 1,0 - Patch cable

2832276

<https://www.phoenixcontact.com/us/products/2832276>



Patch cable, CAT5, assembled, 1 m

FL CAT5 PATCH 2,0 - Patch cable

2832289

<https://www.phoenixcontact.com/us/products/2832289>



Patch cable, CAT5, assembled, 2 m

MC 1000T-MM SC - FO converters



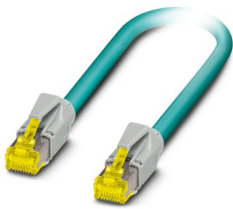
1329827

<https://www.phoenixcontact.com/us/products/1329827>

NBC-R4AC-R4AC-IE8A/.../... - Patch cable

1411854

<https://www.phoenixcontact.com/us/products/1411854>

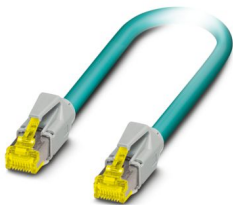


Patch cable, degree of protection: IP20, number of positions: 8, 10 Gbps, CAT6_A, cable outlet: straight, Ethernet

NBC-R4AC/10G-R4AC/10G-94F/2,0 - Patch cable

1408360

<https://www.phoenixcontact.com/us/products/1408360>



Patch cable, CAT6_A, 4-pair, shielded, connection not crossed (line), assembled at both ends with RJ45/IP20 connectors, outer sheath material: PUR, length: 2.0 m

MC 1000T-MM SC - FO converters



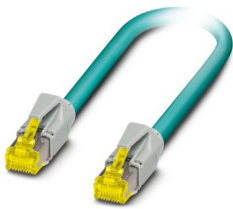
1329827

<https://www.phoenixcontact.com/us/products/1329827>

NBC-R4AC/10G-R4AC/10G-94F/3,0 - Patch cable

1408365

<https://www.phoenixcontact.com/us/products/1408365>

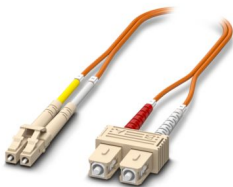


Patch cable, CAT6_A, 4-pair, shielded, connection not crossed (line), assembled at both ends with RJ45/IP20 connectors, outer sheath material: PUR, length: 3.0 m

FOC-LC:PA-SC:PA-OM2:D01/1 - FO patch cable

1115607

<https://www.phoenixcontact.com/us/products/1115607>



Multi-mode OM2 duplex jumper, LC-SC, UPC polishing, length 1 m

MC 1000T-MM SC - FO converters



1329827

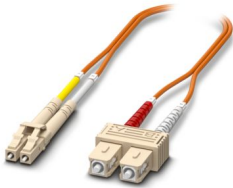
<https://www.phoenixcontact.com/us/products/1329827>

FOC-LC:PA-SC:PA-OM2:D01/2 - FO patch cable

1115605

<https://www.phoenixcontact.com/us/products/1115605>

Multi-mode OM2 duplex jumper, LC-SC, UPC polishing, length 2 m

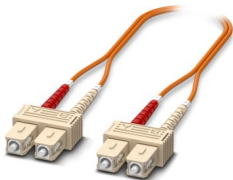


FOC-SC:PA-SC:PA-OM2:D01/1 - FO patch cable

1115536

<https://www.phoenixcontact.com/us/products/1115536>

Multi-mode OM2 duplex jumper, SC-SC, UPC polishing, length 1 m



MC 1000T-MM SC - FO converters



1329827

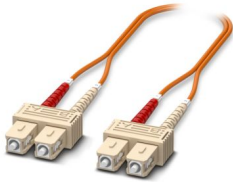
<https://www.phoenixcontact.com/us/products/1329827>

FOC-SC:PA-SC:PA-OM2:D01/2 - FO patch cable

1115535

<https://www.phoenixcontact.com/us/products/1115535>

Multi-mode OM2 duplex jumper, SC-SC, UPC polishing, length 2 m

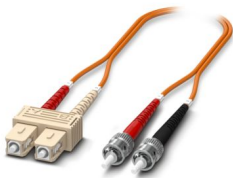


FOC-ST:PA-SC:PA-OM2:D01/1 - FO patch cable

1115574

<https://www.phoenixcontact.com/us/products/1115574>

Multi-mode OM2 duplex jumper, ST-SC, UPC polishing, length 1 m



MC 1000T-MM SC - FO converters



1329827

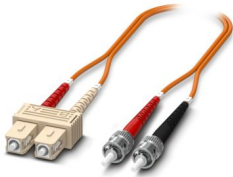
<https://www.phoenixcontact.com/us/products/1329827>

FOC-ST:PA-SC:PA-OM2:D01/2 - FO patch cable

1115573

<https://www.phoenixcontact.com/us/products/1115573>

Multi-mode OM2 duplex jumper, ST-SC, UPC polishing, length 2 m

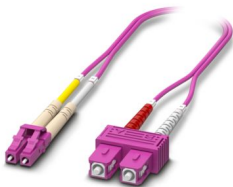


FOC-LC:PA-SC:PA-OM4:D01/1 - FO patch cable

1115601

<https://www.phoenixcontact.com/us/products/1115601>

Multi-mode OM4 duplex jumper, LC-SC, UPC polishing, length 1 m



MC 1000T-MM SC - FO converters



1329827

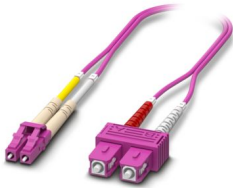
<https://www.phoenixcontact.com/us/products/1329827>

FOC-LC:PA-SC:PA-OM4:D01/2 - FO patch cable

1115600

<https://www.phoenixcontact.com/us/products/1115600>

Multi-mode OM4 duplex jumper, LC-SC, UPC polishing, length 2 m

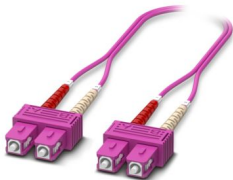


FOC-SC:PA-SC:PA-OM4:D01/1 - FO patch cable

1115424

<https://www.phoenixcontact.com/us/products/1115424>

Multi-mode OM4 duplex jumper, SC-SC, UPC polishing, length 1 m



MC 1000T-MM SC - FO converters

1329827

<https://www.phoenixcontact.com/us/products/1329827>

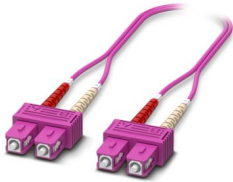


FOC-SC:PA-SC:PA-OM4:D01/2 - FO patch cable

1115423

<https://www.phoenixcontact.com/us/products/1115423>

Multi-mode OM4 duplex jumper, SC-SC, UPC polishing, length 2 m



SZS 0,4X2,0 - Screwdriver

1205202

<https://www.phoenixcontact.com/us/products/1205202>

Micro screwdriver, bladed, size: 0.4 x 2.0 x 60 mm, 2-component grip, with non-slip grip and twist cap



MC 1000T-MM SC - FO converters

1329827

<https://www.phoenixcontact.com/us/products/1329827>



FL DIN RA - DIN rail adapter

2891053

<https://www.phoenixcontact.com/us/products/2891053>

The FL DIN RA is installed in a standard, 19-inch rack (EIA-310-D, IEC 60297-3-100) to allow DIN rail mounted equipment to be rack mounted.



Phoenix Contact 2025 © - all rights reserved

<https://www.phoenixcontact.com>

Phoenix Contact USA
586 Fulling Mill Road
Middletown, PA 17057, United States
(+717) 944-1300
info@phoenixcon.com