

# RC-12P1N12C364 - Rear panel feed-through



1597167

<https://www.phoenixcontact.com/us/products/1597167>

Please be informed that the data shown in this PDF document is generated from our online catalog. Please find the complete data in the user documentation. Our general terms of use for downloads are valid.



M23, Rear panel feed-through, series: RC, straight, shielded: yes, Screw locking mechanism, No. of pos.: 12, Direction of rotation: Standard, contact connection type: Pin, Solder cup, Radial O-ring, Panel thickness max.: 2.5 mm, cable diameter range: 6.5 mm ... 7.5 mm, coding: N. This product is in the process of being discontinued. This product must no longer be considered for new projects. Please contact your sales representative for alternatives.

## Commercial data

Item number	1597167
Packing unit	20 pc
Minimum order quantity	1 pc
Product key	ABRAFJ
GTIN	4046356214704
Weight per piece (including packing)	86.653 g
Weight per piece (excluding packing)	86.653 g
Country of origin	DE

# RC-12P1N12C364 - Rear panel feed-through



1597167

<https://www.phoenixcontact.com/us/products/1597167>

## Technical data

### Product properties

Product type	Circular connectors (device side)
--------------	-----------------------------------

### Connector

#### Insulating body

Coding	N
Material (Insulating body)	PBT
Material (Contact)	CuZn
Material (Contact surface)	Ni/Au
Insertion/withdrawal cycles	100
Connection method	Solder cup
Contact switching type	Pin
Application	Signal
Number of positions	12
Direction of rotation	Standard
Connection profile	12
Number Contact (Contact group 1)	12
Diameter Contact (Contact group 1)	1 mm
Litz wire cross-section min. Contact (Contact group 1)	0.08 mm <sup>2</sup>
Litz wire cross-section max. Contact (Contact group 1)	1 mm <sup>2</sup>
Rated current Contact (Contact group 1)	8 A (for max. connection cross section)
Rated voltage Contact (Contact group 1)	48 V AC
	74 V DC
Rated surge voltage	1.5 kV
Overvoltage category	III
Degree of pollution	3

#### Housing

Order information:	Order contact inserts and cable clamping/shield accessories separately
Type	Feed-through header
Thread type	M23
Design	straight
Type of locking	Screw locking mechanism
Pg screw connection	none
Mounting type	Rear mounting/square flange (4x M3)
Housing material	Metal
Degree of protection (plugged in)	IP67
Seal for the device	Radial O-ring

#### Seal

External cable diameter	6.5 mm ... 7.5 mm
-------------------------	-------------------

# RC-12P1N12C364 - Rear panel feed-through

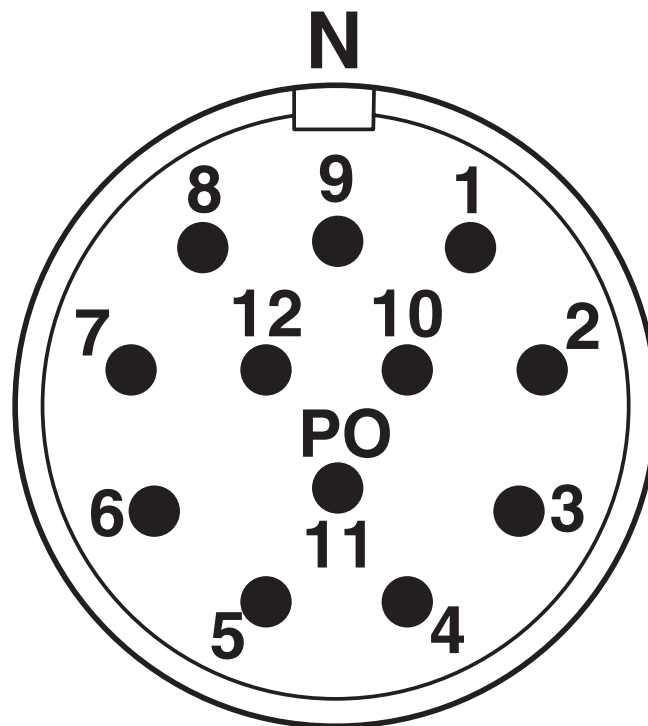


1597167

<https://www.phoenixcontact.com/us/products/1597167>

## Drawings

Schematic diagram



Connector pin assignment

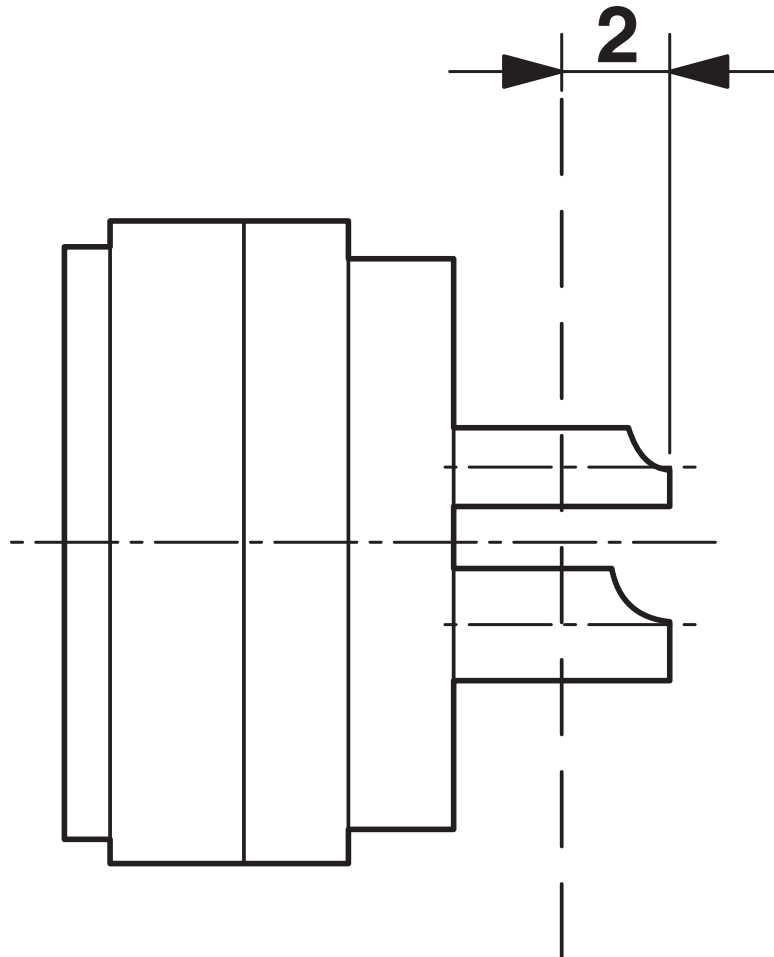
# RC-12P1N12C364 - Rear panel feed-through



1597167

<https://www.phoenixcontact.com/us/products/1597167>

Schematic diagram



Dimensional drawing

# RC-12P1N12C364 - Rear panel feed-through



1597167

<https://www.phoenixcontact.com/us/products/1597167>

## Classifications

### ECLASS

ECLASS-13.0	27440109
ECLASS-15.0	27440109

### ETIM

ETIM 9.0	EC003569
----------	----------

### UNSPSC

UNSPSC 21.0	39121400
-------------	----------

# RC-12P1N12C364 - Rear panel feed-through



1597167

<https://www.phoenixcontact.com/us/products/1597167>

## Environmental product compliance

### EU RoHS

Fulfills EU RoHS substance requirements	Yes
Exemption	6(c)

### China RoHS

Environment friendly use period (EFUP)	EFUP-50
	An article-related China RoHS declaration table can be found in the download area for the respective article under "Manufacturer declaration". For all articles with EFUP-E, no China RoHS declaration table issued and required.

### EU REACH SVHC

REACH candidate substance (CAS No.)	Lead(CAS: 7439-92-1)
SCIP	a555aa80-96f6-4567-a3a3-cb3437bbffd

Phoenix Contact 2025 © - all rights reserved

<https://www.phoenixcontact.com>

Phoenix Contact USA  
586 Fulling Mill Road  
Middletown, PA 17057, United States  
(+717) 944-1300  
[info@phoenixcon.com](mailto:info@phoenixcon.com)