

UM- 8 RELS/KSR-G24/21/MT/PLC - Active module



2962463

<https://www.phoenixcontact.com/us/products/2962463>

Please be informed that the data shown in this PDF document is generated from our online catalog. Please find the complete data in the user documentation. Our general terms of use for downloads are valid.



VARIOFACE output module, with plug-in bases for 8 miniature relays, 1 changeover contact each, for 24 V DC, with knife-disconnect terminal blocks in the output (without relays)

Your advantages

- Supply voltage indicator (LED)
- Polarity protection diode
- LED status indicator and freewheeling diode per signal path
- Plug-in miniature relays

Commercial data

Item number	2962463
Packing unit	1 pc
Minimum order quantity	1 pc
Note	Made to order (non-returnable)
Sales key	C421
Product key	DK2191
GTIN	4017918087166
Weight per piece (including packing)	374.9 g
Weight per piece (excluding packing)	374.9 g
Customs tariff number	85364190
Country of origin	DE

UM- 8 RELS/KSR-G24/21/MT/PLC - Active module



2962463

<https://www.phoenixcontact.com/us/products/2962463>

Technical data

Product properties

Product type	Interface module
No. of channels	8
Operating mode	100% operating factor
Mechanical service life	3x 10 ⁷ cycles
Compatible components	Miniature relay, REL-MR- 24DC/21HC
With components	no

Insulation characteristics

Overvoltage category	III
Pollution degree	2

Electrical properties

Rated insulation voltage	300 V AC
Rated surge voltage	4 kV (Basic insulation between output contact current paths) 6 kV (Safe isolation and reinforced insulation between input circuit and output contact paths)

Supported controller SIEMENS S7-1500

Suitable I/O card	6ES7522-1BH00-0AB0
	6ES7522-1BH01-0AB0
	6ES7522-1BL00-0AB0
	6ES7522-1BL01-0AB0

Supported controller SIEMENS S7-400

Suitable I/O card	6ES7422-1BL00-0AA0
	6ES7422-7BL00-0AB0

Supported controller SIEMENS S7-300 / ET 200 M

Suitable I/O card	CPU 313C-2DP
	CPU 314C-2DP
	CPU 314C-2PtP
	6ES7322-1BH01-0AA0
	6ES7322-1BL00-0AA0
	6ES7323-1BH01-0AA0
	6ES7323-1BL00-0AA0
	CPU 313C
	CPU 313C-2PtP

Supported controller ALLEN-BRADLEY PLC 5

Suitable I/O card	1771 OBN
-------------------	----------

Supported controller ALLEN-BRADLEY SLC 500

Suitable I/O card	1746 OB 32
-------------------	------------

UM- 8 RELS/KSR-G24/21/MT/PLC - Active module



2962463

<https://www.phoenixcontact.com/us/products/2962463>

Supported controller HONEYWELL Experion PKS C200

Suitable I/O card	TC-ODD 321
-------------------	------------

Supported controller MITSUBISHI MELSEC Q

Suitable I/O card	QY81P
	QY82P

Supported controller ABB S800 I/O

Suitable I/O card	DO810
	DO840

Supported controller GE-FANUC RX3i

Suitable I/O card	IC694MDL754
-------------------	-------------

Supported controller MITSUBISHI MELSEC L

Suitable I/O card	LY41PT1P
	LY42PT1P

Input data

Nominal input voltage U_N	24 V DC
Protective circuit	Freewheeling diode; Freewheeling diode Reverse polarity protection; Polarity protection diode
Operating voltage display	Green LED
Status display/channel	Yellow LED

Output data

Compatible components	Miniature relay, REL-MR- 24DC/21HC
-----------------------	------------------------------------

Switching

Note	The interrupting ratings apply when using the REL-MR- 24DC/21HC relay (2961312)
Contact switching type	1 changeover contact
Maximum switching voltage	250 V AC/DC
Limiting continuous current	5 A
Min. switching current	10 mA

Connection data

Controller level

Connection method	IDC/FLK pin strip
Number of connections	1
Number of positions	14
Pitch	2.54 mm

Field level

Connection method	Screw connection with disconnect knife
Stripping length	8 mm

UM- 8 RELS/KSR-G24/21/MT/PLC - Active module



2962463

<https://www.phoenixcontact.com/us/products/2962463>

Screw thread	M3
Number of connections	24
Conductor cross-section rigid	0.2 mm² ... 4 mm²
Conductor cross-section flexible	0.2 mm² ... 2.5 mm²
Conductor cross-section AWG	24 ... 12

Supply

Connection method	Screw connection with disconnect knife
Stripping length	8 mm
Screw thread	M3
Number of connections	2
Conductor cross-section rigid	0.2 mm² ... 4 mm²
Conductor cross-section flexible	0.2 mm² ... 2.5 mm²
Conductor cross-section AWG	24 ... 12

Signaling

Status display present	yes
------------------------	-----

Dimensions

Width	145.5 mm
Height	112 mm
Depth	52 mm

Material specifications

Color	green (RAL 6021)
-------	------------------

Environmental and real-life conditions

Ambient conditions

Degree of protection	IP00
Ambient temperature (operation)	-20 °C ... 50 °C
Ambient temperature (storage/transport)	-20 °C ... 70 °C

Standards and regulations

Standards/regulations	EN 61010-2-201
	IEC 60664

Mounting

Mounting type	DIN rail mounting
Assembly note	in rows with zero spacing
Mounting position	any

Notes

Notes on operation	Observe the maximum switching capacity of the relays used
Notes on operation	Do not connect adjacent channels to SELV/ PELV and voltages dangerous to the touch.

UM- 8 RELS/KSR-G24/21/MT/PLC - Active module



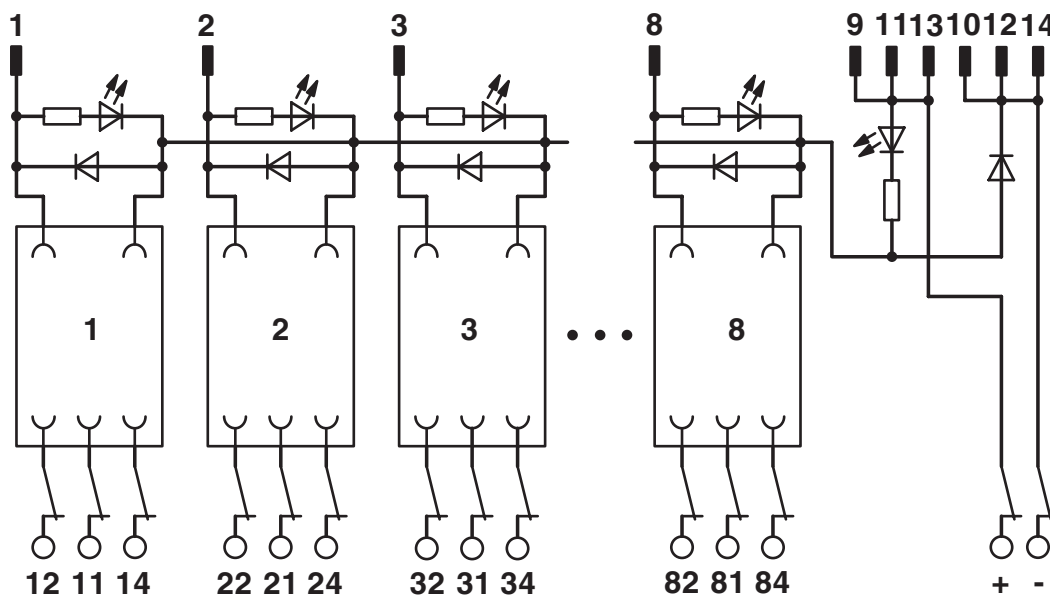
2962463

<https://www.phoenixcontact.com/us/products/2962463>

Notes on operation	The outputs are not suitable for switching different line conductors. The sum of the switching voltages used for adjacent outputs must not exceed the rated insulation voltage value
Notes on operation	The necessary requirements for insulation (basic insulation or reinforced insulation) from adjacent modules (in DIN-rail direction) must be realized by applying suitable measures (e. g., partition plates).
Notes on operation	For proper use, the specifications of the installation directive (see Downloads) must be observed. For applications or use with third-party products, the specifications, and the safety and warning instructions of the respective third-party manufacturer must also be met.
Utilization restriction	
EMC note	EMC: class A product, see manufacturer's declaration in the download area

Drawings

Circuit diagram



UM- 8 RELS/KSR-G24/21/MT/PLC - Active module



2962463

<https://www.phoenixcontact.com/us/products/2962463>

Approvals

🔗 To download certificates, visit the product detail page: <https://www.phoenixcontact.com/us/products/2962463>



EAC

Approval ID: RU*DE*08.B.01841/19

UM- 8 RELS/KSR-G24/21/MT/PLC - Active module



2962463

<https://www.phoenixcontact.com/us/products/2962463>

Classifications

ECLASS

ECLASS-13.0	27141152
ECLASS-15.0	27141152

ETIM

ETIM 9.0	EC002780
----------	----------

UNSPSC

UNSPSC 21.0	39121400
-------------	----------

Environmental product compliance

EU RoHS

Fulfills EU RoHS substance requirements	Yes
Exemption	6(c), 7(a)

China RoHS

Environment friendly use period (EFUP)	EFUP-50
	An article-related China RoHS declaration table can be found in the download area for the respective article under "Manufacturer declaration". For all articles with EFUP-E, no China RoHS declaration table issued and required.

EU REACH SVHC

REACH candidate substance (CAS No.)	Hexahydromethylphthalic anhydride(CAS: n/a)
	Lead(CAS: 7439-92-1)
SCIP	1dc85595-ea71-4aba-8eee-36a9526eb2c3