

# UEGH 22,5 - Electronics housing

2757102

<https://www.phoenixcontact.com/us/products/2757102>



Please be informed that the data shown in this PDF document is generated from our online catalog. Please find the complete data in the user documentation. Our general terms of use for downloads are valid.



Electronic housing, double-level, fully equipped with 6 screw connections per side for one printed circuit board

## Commercial data

Item number	2757102
Packing unit	10 pc
Minimum order quantity	1 pc
Sales key	AC11
Product key	ACHCCD
GTIN	4017918063542
Weight per piece (including packing)	72.92 g
Weight per piece (excluding packing)	72.92 g
Customs tariff number	85369010
Country of origin	DE

## Technical data

### Product properties

Product type	Complete housing
Housing type	Complete housing
Housing series	UEG
Product family	UEGH
Type	Connection system integrated, housing closed
Number of positions	12
Pitch	5 mm
Number of rows	2
Pin layout	Linear pinning

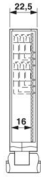
### Electrical properties

Nominal voltage $U_N$	500 V
Nominal current $I_N$	10 A

### Connection data

Connection method	Screw connection
-------------------	------------------

### Dimensions

Dimensional drawing	
Width	22.5 mm
Installed height	106.7 mm
Height NS 35/7,5	106.7 mm
Depth	79 mm
Length	79 mm
Pitch	5 mm

### Material specifications

Color (Housing)	green (RAL 6021)
Material Housing	PA
Flammability rating according to UL 94	V0
Surface characteristics	untreated

### Environmental and real-life conditions

#### Ambient conditions

Ambient temperature (operation)	-40 °C ... 105 °C
---------------------------------	-------------------

# UEGH 22,5 - Electronics housing

2757102

<https://www.phoenixcontact.com/us/products/2757102>



## Mounting

Mounting type	Soldering
Pin layout	Linear pinning

# UEGH 22,5 - Electronics housing

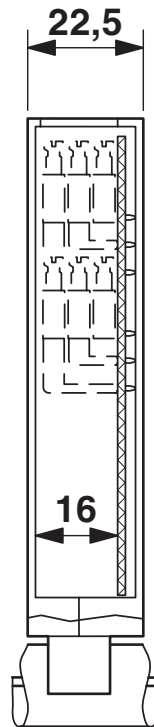
2757102

<https://www.phoenixcontact.com/us/products/2757102>



## Drawings

### Dimensional drawing



For 1 PCB, 12 pos.

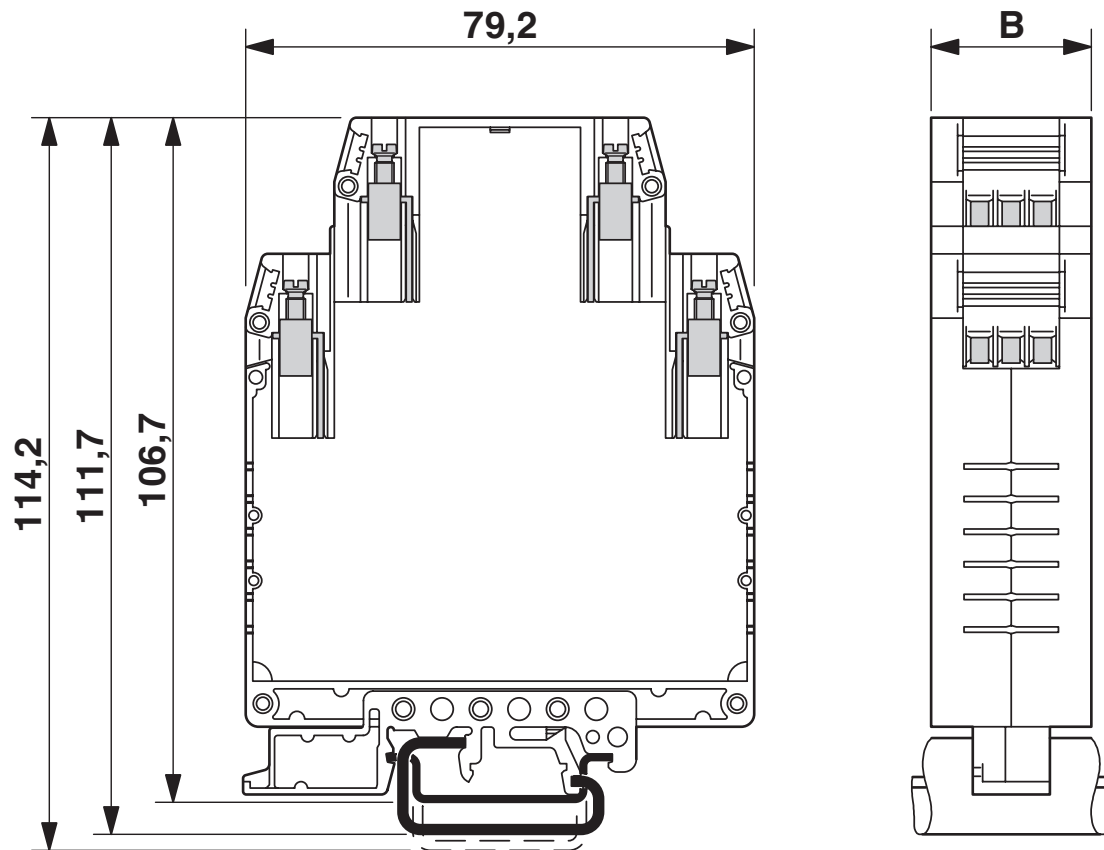
# UEGH 22,5 - Electronics housing

2757102

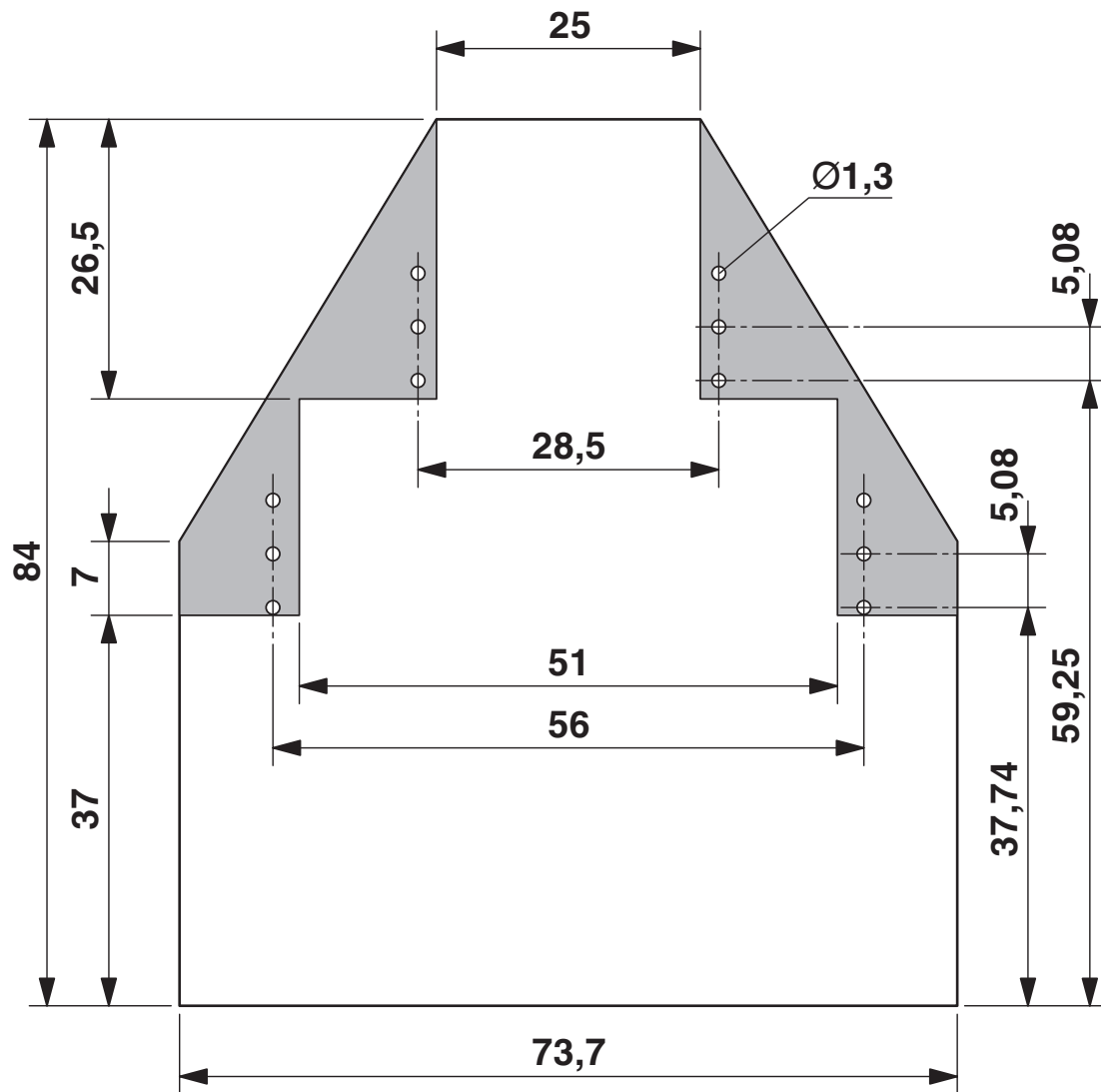
<https://www.phoenixcontact.com/us/products/2757102>



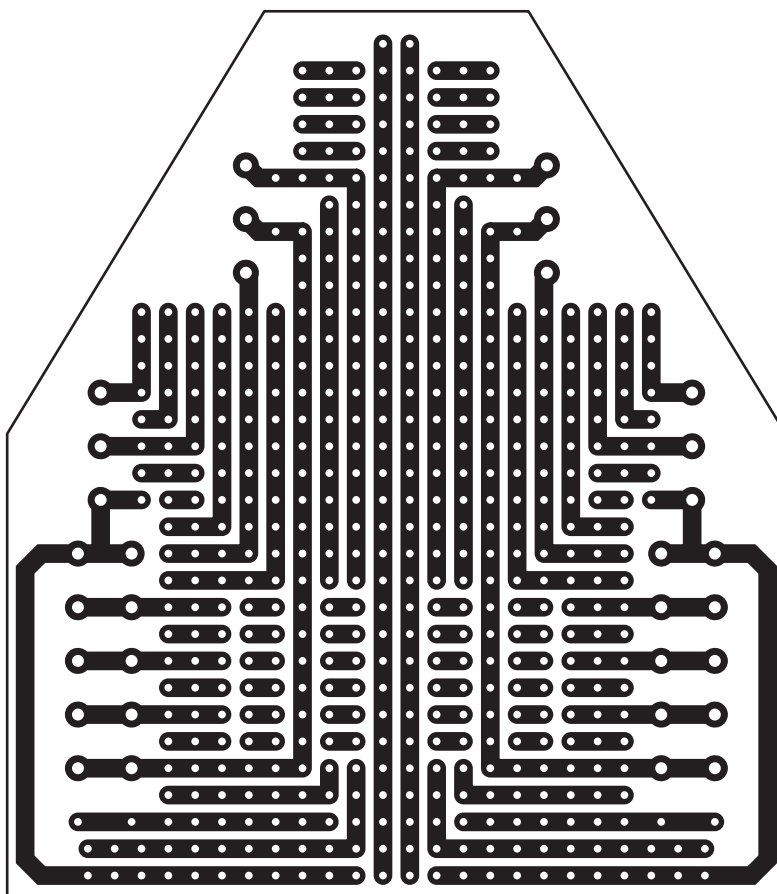
Dimensional drawing



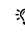
Dimensional drawing




Schematic diagram



Approvals

 To download certificates, visit the product detail page: <https://www.phoenixcontact.com/us/products/2757102>

<div> <b>cULus Recognized</b> Approval ID: E60425-19770427</div>				
	Nominal voltage $U_N$	Nominal current $I_N$	Cross section AWG	Cross section $\text{mm}^2$
B				
	300 V	10 A	30 - 12	-
D				
	300 V	10 A	30 - 12	-



# UEGH 22,5 - Electronics housing

2757102

<https://www.phoenixcontact.com/us/products/2757102>



## Classifications

### ECLASS

ECLASS-13.0	27190501
ECLASS-15.0	27190501

### ETIM

ETIM 9.0	EC001031
----------	----------

### UNSPSC

UNSPSC 21.0	31261500
-------------	----------

# UEGH 22,5 - Electronics housing



2757102

<https://www.phoenixcontact.com/us/products/2757102>

## Environmental product compliance

EU RoHS	
Fulfills EU RoHS substance requirements	Yes, No exemptions
China RoHS	
Environment friendly use period (EFUP)	EFUP-E
	No hazardous substances above the limits
EU REACH SVHC	
REACH candidate substance (CAS No.)	No substance above 0.1 wt%

Phoenix Contact 2025 © - all rights reserved  
<https://www.phoenixcontact.com>

Phoenix Contact USA  
586 Fulling Mill Road  
Middletown, PA 17057, United States  
(+717) 944-1300  
[info@phoenixcon.com](mailto:info@phoenixcon.com)