

UM 72-FE KMGY - Foot element

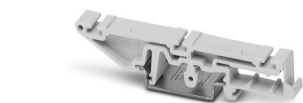
2695840

<https://www.phoenixcontact.com/us/products/2695840>



Please be informed that the data shown in this PDF document is generated from our online catalog. Please find the complete data in the user documentation. Our general terms of use for downloads are valid.

Press-drawn section housings, Base element for the DIN rail, for mounting below UM-PRO PROFILE (width: 72 mm), Foot element



Commercial data

Item number	2695840
Packing unit	10 pc
Minimum order quantity	20 pc
Product key	ACHDBA
GTIN	4046356479592
Weight per piece (including packing)	5.91 g
Weight per piece (excluding packing)	5.89 g
Country of origin	PL

UM 72-FE KMGY - Foot element

2695840

<https://www.phoenixcontact.com/us/products/2695840>



Technical data

Product properties

Product type	Base latches
Housing type	Press-drawn section housings
Housing series	UM
Product family	UM72

Material specifications

Color (Housing)	light gray (RAL 7035)
Material Housing	PA
Flammability rating according to UL 94	V0
Surface characteristics	untreated

UM 72-FE KMGY - Foot element

2695840

<https://www.phoenixcontact.com/us/products/2695840>



Approvals

🔗 To download certificates, visit the product detail page: <https://www.phoenixcontact.com/us/products/2695840>



UL Recognized

Approval ID: E240868

UM 72-FE KMGY - Foot element



2695840

<https://www.phoenixcontact.com/us/products/2695840>

Classifications

ECLASS

ECLASS-13.0	27190605
ECLASS-15.0	27190605

ETIM

ETIM 9.0	EC002779
----------	----------

UNSPSC

UNSPSC 21.0	31261500
-------------	----------

UM 72-FE KMGY - Foot element

2695840

<https://www.phoenixcontact.com/us/products/2695840>



Environmental product compliance

EU RoHS	
Fulfills EU RoHS substance requirements	Yes, No exemptions
China RoHS	
Environment friendly use period (EFUP)	EFUP-E
	No hazardous substances above the limits
EU REACH SVHC	
REACH candidate substance (CAS No.)	No substance above 0.1 wt%

Phoenix Contact 2025 © - all rights reserved
<https://www.phoenixcontact.com>

Phoenix Contact USA
586 Fulling Mill Road
Middletown, PA 17057, United States
(+717) 944-1300
info@phoenixcon.com