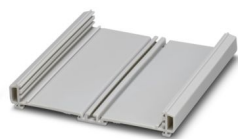


Please be informed that the data shown in this PDF document is generated from our online catalog. Please find the complete data in the user documentation. Our general terms of use for downloads are valid.

Press-drawn section housings, Latching with side elements, latching with foot element, Basic profile, profile width (internal): 108 mm, length: 232.5 mm, depth: 19.8 mm



Your advantages

- Tailor-made housing length, can be cut to length with millimeter precision
- Easy integration of large electronics components, thanks to the open design
- Heat-resistant UM-PRO made from polyamide with UL approval up to 100°C
- Easy device mounting thanks to snap-mount principle (the sides are fixed without the aid of tools)
- High degree of flexibility, thanks to freely positionable covering hoods

Commercial data

Item number	2201139
Packing unit	50 pc
Minimum order quantity	50 pc
Sales key	NULL
Product key	ACHDAA
GTIN	4046356734226
Weight per piece (including packing)	143.8 g
Weight per piece (excluding packing)	130 g
Customs tariff number	39169010
Country of origin	DE

## Technical data

### Notes

Assembly note	Please observe the application note in the download area.
---------------	---

### Product properties

Product type	Component housing lower part
Housing type	Press-drawn section housings
Housing series	UM-PRO

### Dimensions

Depth	19.8 mm
Length	23.25 cm

#### Internal dimensions

Profile width (internal)	108 mm
--------------------------	--------

#### PCB design

PCB thickness	1.4 mm ... 1.8 mm
---------------	-------------------

### Material specifications

Color (Housing)	light gray (RAL 7035)
Material Housing	PA
Flammability rating according to UL 94	V0
CTI according to IEC 60112	600
Surface characteristics	untreated

### Environmental and real-life conditions

#### Ambient conditions

Max. IP code to attain	IP20
Ambient temperature (operation)	-40 °C ... 105 °C (depending on power dissipation)
Ambient temperature (storage/transport)	-40 °C ... 55 °C
Ambient temperature (assembly)	-5 °C ... 100 °C
Relative humidity (storage/transport)	80 %

### PCB data

Number of PCB holders	3
Type of PCB mount	Insertion/securing with additional elements
Thickness of the PCB	1.4 mm ... 1.8 mm

### Mounting

Mounting type	Latching with side elements, latching with foot element
Mounting position	parallel to the DIN rail


# UM-PRO 108-PROFIL L 23,25CM GY - Profile



2201139

<https://www.phoenixcontact.com/us/products/2201139>

## Approvals

 To download certificates, visit the product detail page: <https://www.phoenixcontact.com/us/products/2201139>



**UL Recognized**

Approval ID: E240868

# UM-PRO 108-PROFIL L 23,25CM GY - Profile



2201139

<https://www.phoenixcontact.com/us/products/2201139>

## Classifications

### ECLASS

ECLASS-13.0	27190601
ECLASS-15.0	27190601

### ETIM

ETIM 8.0	EC002779
----------	----------

### UNSPSC

UNSPSC 21.0	31261501
-------------	----------

# UM-PRO 108-PROFIL L 23,25CM GY - Profile



2201139

<https://www.phoenixcontact.com/us/products/2201139>

## Environmental product compliance

EU RoHS	
Fulfills EU RoHS substance requirements	Yes, No exemptions
China RoHS	
Environment friendly use period (EFUP)	EFUP-E
	No hazardous substances above the limits
EU REACH SVHC	
REACH candidate substance (CAS No.)	No substance above 0.1 wt%

Phoenix Contact 2025 © - all rights reserved  
<https://www.phoenixcontact.com>

Phoenix Contact USA  
586 Fulling Mill Road  
Middletown, PA 17057, United States  
(+717) 944-1300  
[info@phoenixcon.com](mailto:info@phoenixcon.com)