

RC-12S1N12M0DU - Coupler connector



1610885

<https://www.phoenixcontact.com/us/products/1610885>

Please be informed that the data shown in this PDF document is generated from our online catalog. Please find the complete data in the user documentation. Our general terms of use for downloads are valid.



M23, Coupler connector, series: RC, straight plastic-sheathed, shielded: yes, Screw locking mechanism, No. of pos.: 12, Direction of rotation: Standard, contact connection type: Socket, Solder cup, cable diameter range: 4.5 mm ... 5.5 mm, coding: N

Commercial data

Item number	1610885
Packing unit	20 pc
Minimum order quantity	1 pc
Note	Made to order (non-returnable)
Product key	ABRAFG
GTIN	4046356392990
Weight per piece (including packing)	47.87 g
Weight per piece (excluding packing)	43.82 g
Country of origin	DE

RC-12S1N12M0DU - Coupler connector



1610885

<https://www.phoenixcontact.com/us/products/1610885>

Technical data

Product properties

Product type	Circular connectors (device side)
--------------	-----------------------------------

Connector

Insulating body

Coding	N
Material (Insulating body)	PBT
Material (Contact)	CuZn
Material (Contact surface)	Ni/Au
Insertion/withdrawal cycles	50
Connection method	Solder cup
Contact switching type	Socket
Application	Signal
Number of positions	12
Direction of rotation	Standard
Connection profile	12
Number Contact (Contact group 1)	12
Diameter Contact (Contact group 1)	1 mm
Litz wire cross-section min. Contact (Contact group 1)	0.08 mm ²
Litz wire cross-section max. Contact (Contact group 1)	1 mm ²
Rated current Contact (Contact group 1)	8 A (for max. connection cross section)
Rated voltage Contact (Contact group 1)	48 V AC
	74 V DC
Rated surge voltage	1.5 kV
Overvoltage category	III
Degree of pollution	3

Housing

Type	Coupling housing
Thread type	M23
Design	straight plastic-sheathed
Type of locking	Screw locking mechanism
Pg screw connection	none
Material (Housing)	GD-Zn
Material (Seal)	FPM (O-ring)
Degree of protection (plugged in)	IP67

Seal

External cable diameter	4.5 mm ... 5.5 mm
Seal material	NBR

RC-12S1N12M0DU - Coupler connector

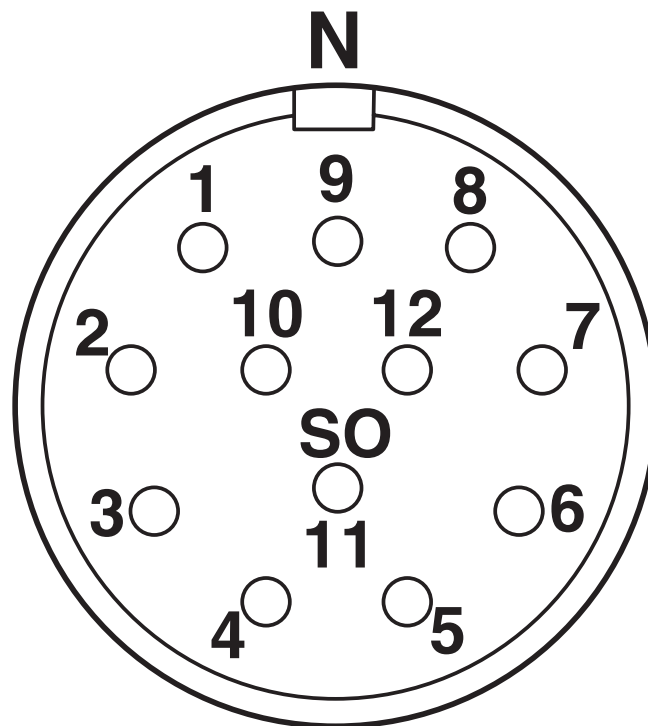
1610885

<https://www.phoenixcontact.com/us/products/1610885>



Drawings

Schematic diagram



Connector pin assignment

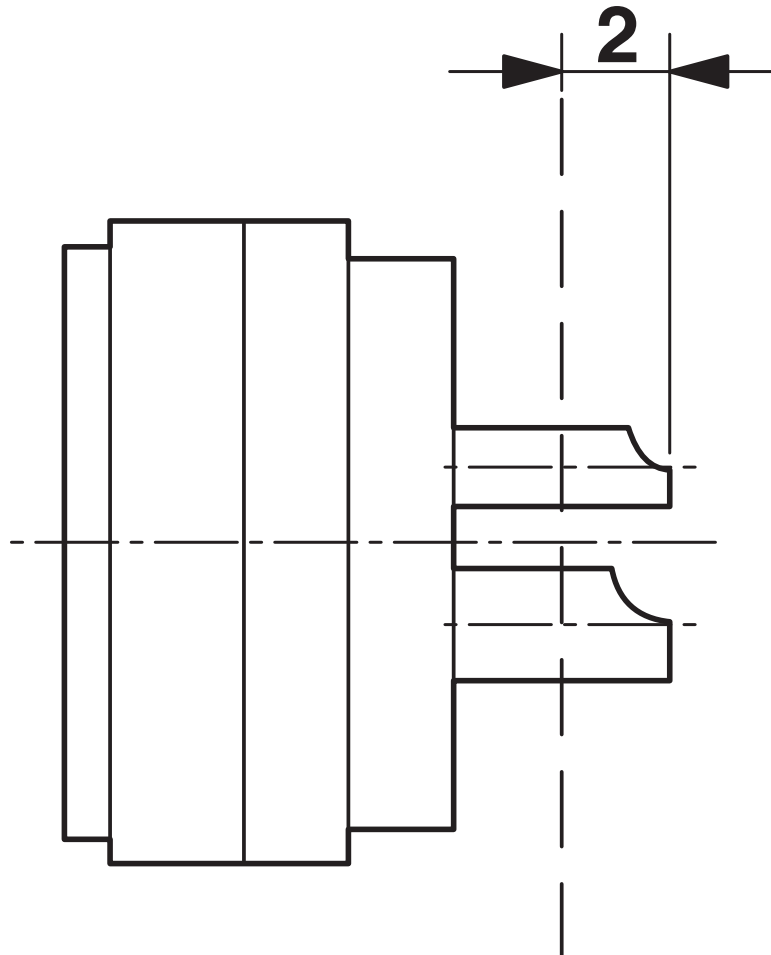
RC-12S1N12M0DU - Coupler connector

1610885

<https://www.phoenixcontact.com/us/products/1610885>



Schematic diagram



Dimensional drawing

RC-12S1N12M0DU - Coupler connector



1610885

<https://www.phoenixcontact.com/us/products/1610885>

Classifications

ETIM

ETIM 8.0	EC002635
----------	----------

UNSPSC

UNSPSC 21.0	39121400
-------------	----------

RC-12S1N12M0DU - Coupler connector



1610885

<https://www.phoenixcontact.com/us/products/1610885>

Environmental product compliance

EU RoHS

Fulfills EU RoHS substance requirements	Yes
Exemption	6(c)

China RoHS

Environment friendly use period (EFUP)	EFUP-50
	An article-related China RoHS declaration table can be found in the download area for the respective article under "Manufacturer declaration". For all articles with EFUP-E, no China RoHS declaration table issued and required.

EU REACH SVHC

REACH candidate substance (CAS No.)	Lead(CAS: 7439-92-1)
SCIP	4a7d4031-4809-48f9-9e2b-7e5da02f71dd

Phoenix Contact 2025 © - all rights reserved

<https://www.phoenixcontact.com>

Phoenix Contact USA
586 Fulling Mill Road
Middletown, PA 17057, United States
(+717) 944-1300
info@phoenixcon.com