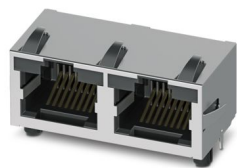


1337251  
<https://www.phoenixcontact.com/us/products/1337251>

Please be informed that the data shown in this PDF document is generated from our online catalog. Please find the complete data in the user documentation. Our general terms of use for downloads are valid.

RJ45 PCB connector, number of positions: 8, 10 Gbps, PCB mounting, degree of protection: IP20, connection method: THR reflow/THT wave, Tape and Reel



Your advantages

- The right version for every application. Available with and without LED, single- and multi-port
- The reflow capability enables efficient, cost-optimized processing
- High standoffs allow ideal thermal airflow during processing
- Tape-on-reel packaging is perfect for automated processing
- The extended temperature range from -50 °C ... +85 °C enables use in demanding applications
- Through-hole technology (THT) provides high mechanical stability when connecting the female connector to the PCB

Commercial data

Item number	1337251
Packing unit	100 pc
Minimum order quantity	100 pc
Sales key	AB12
Product key	ABNADA
GTIN	4063151638399
Weight per piece (including packing)	10.28 g
Weight per piece (excluding packing)	10.28 g
Customs tariff number	85366930
Country of origin	CN

# CUC-MP-J1ST-A/2R4LT-THR - RJ45 PCB connector



1337251

<https://www.phoenixcontact.com/us/products/1337251>

## Technical data

### Product properties

Product type	Data connector (device side)
Number of positions	8
Connection profile	RJ45
Housing shield springs	Yes
Number of slots	2
Shielded	yes

### Insulation characteristics

Overvoltage category	I
Degree of pollution	2

### Electrical properties

Rated voltage	72 V DC
Rated surge voltage	1.5 kV DC
Rated current	1.5 A
Frequency range	10 Hz ... 500 Hz
Insulation resistance	> 500 MΩ
Transmission speed	10 Gbps
Transmission speed	10 Gbps
Power transmission	PoE++

### Connection data

#### Connection technology

Connection method	THR reflow/THT wave
-------------------	---------------------

### Dimensions

Width	35.5 mm
Height	18.2 mm
Length	15.9 mm
Installed height	13.60 mm
Orientation to PCB	90.00 °
Data pin length	2.00 mm

### Material specifications

Material Metal surface contact area (top layer)	Au (1.27 µm/50 µ") (Metal surface contact area (top layer))
Material Metal surface soldering area (top layer)	Sn (2.54 µm/100 µ")
Material Metal surface soldering area (middle layer)	Ni (1.27 µm/50 µ")
Material Metal surface contact area (middle layer)	Ni (1.27 µm/50 µ")
Material Housing	Stainless steel (Housing (shielding))
Material	LCP (Housing (female/insert))
Material Contact	Phosphor bronze

# CUC-MP-J1ST-A/2R4LT-THR - RJ45 PCB connector



1337251

<https://www.phoenixcontact.com/us/products/1337251>

Material Contact carrier	LCP
Material Housing	Metal

## Cable/line

Test voltage Core/Core	1 kV DC
Test voltage Core/Shield	1.50 kV DC
Halogen-free	yes
Flame resistance	UL 94 V0

## Mechanical properties

### Mechanical data

Insertion/withdrawal cycles	> 750
Insertion force	20 N
Withdrawal force	20 N

## Environmental and real-life conditions

### Test specification

Frequency	10-500 Hz
Sweep speed	1 octave/min
Amplitude	0.35 mm
Acceleration	50.00 m/s <sup>2</sup>
Test duration	20.00 s

### Test specification

Specification	IEC60068-2-27
Acceleration	295.00 m/s <sup>2</sup>

### Ambient conditions

Degree of protection (when plugged in)	IP20
Degree of protection (not plugged in)	IP20
Ambient temperature (operation)	-50 °C ... 85 °C
Ambient temperature (storage/transport)	-50 °C ... 85 °C

## Standards and regulations

Flame resistance	UL 94 V0
------------------	----------

## Mounting

Mounting type	PCB mounting
---------------	--------------

### Processing notes

Process	THR
Moisture Sensitive Level	MSL 1
Classification temperature T <sub>c</sub>	260 °C
Solder cycles in the reflow	3

# CUC-MP-J1ST-A/2R4LT-THR - RJ45 PCB connector



1337251

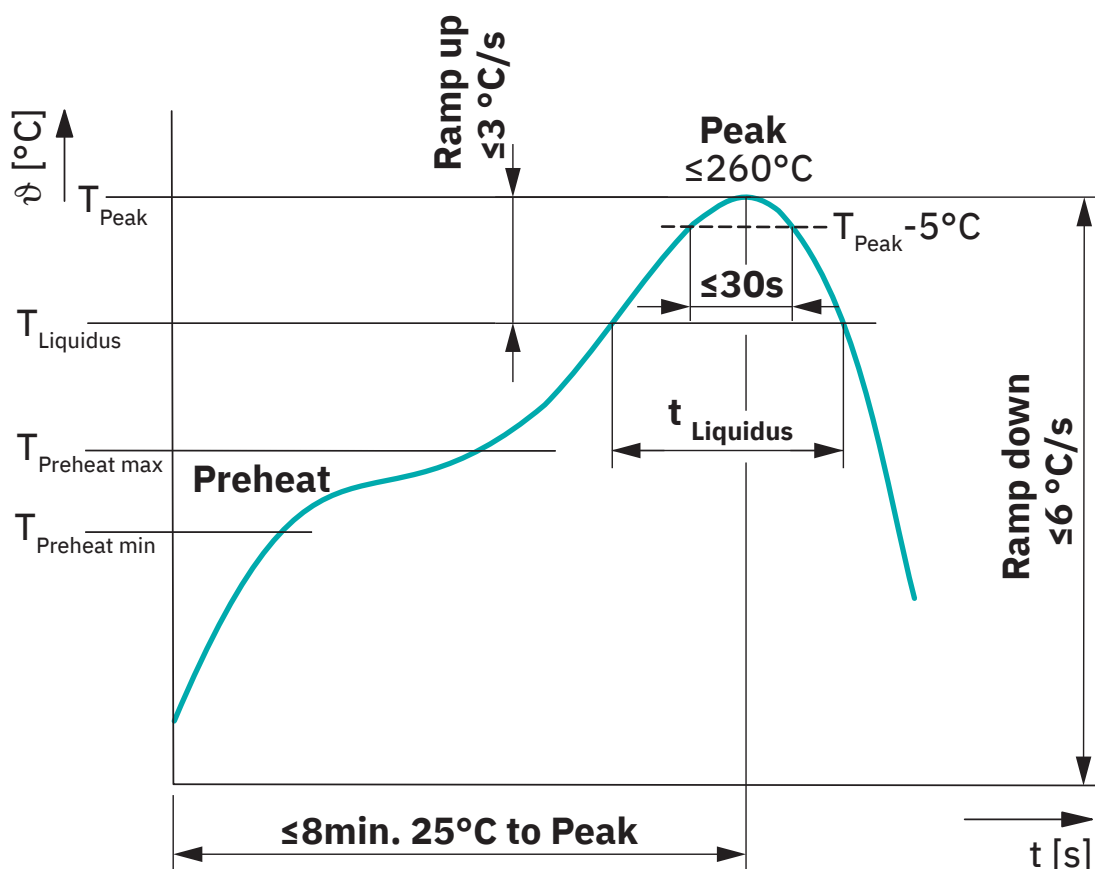
<https://www.phoenixcontact.com/us/products/1337251>

## Packaging specifications

Type of packaging	Tape and Reel
[W] tape width	56 mm
[W2] coil overall dimension	61.1 mm
[A] coil diameter	330 mm

## Drawings

Diagram



Classification reflow soldering profile

# CUC-MP-J1ST-A/2R4LT-THR - RJ45 PCB connector



1337251

<https://www.phoenixcontact.com/us/products/1337251>

## Approvals

To download certificates, visit the product detail page: <https://www.phoenixcontact.com/us/products/1337251>



**UL Recognized**

Approval ID: FILE E 335024

# CUC-MP-J1ST-A/2R4LT-THR - RJ45 PCB connector



1337251

<https://www.phoenixcontact.com/us/products/1337251>

## Classifications

### ECLASS

ECLASS-13.0	27460201
ECLASS-15.0	27460201

### ETIM

ETIM 9.0	EC002637
----------	----------

### UNSPSC

UNSPSC 21.0	39121400
-------------	----------

Environmental product compliance

EU RoHS	
Fulfills EU RoHS substance requirements	Yes, No exemptions
China RoHS	
Environment friendly use period (EFUP)	EFUP-E
	No hazardous substances above the limits
EU REACH SVHC	
REACH candidate substance (CAS No.)	No substance above 0.1 wt%