

EMG 45-LG/SET - Electronics housing



2940032

<https://www.phoenixcontact.com/us/products/2940032>

Please be informed that the data shown in this PDF document is generated from our online catalog. Please find the complete data in the user documentation. Our general terms of use for downloads are valid.



Electronic housing set, consisting of electronic module and printed circuit termination blocks, pitch 5

Commercial data

Item number	2940032
Packing unit	1 pc
Note	Made to order (non-returnable)
Sales key	AC11
Product key	ACHCBA
GTIN	4017918079819
Weight per piece (including packing)	72.36 g
Weight per piece (excluding packing)	72.36 g
Customs tariff number	85369010
Country of origin	DE

EMG 45-LG/SET - Electronics housing



2940032

<https://www.phoenixcontact.com/us/products/2940032>

Set consists of

MKDS 3/ 3-5,08 - PCB terminal block

1711738

<https://www.phoenixcontact.com/us/products/1711738>



Printed circuit board terminal, nominal current: 24 A, rated voltage (III/2): 400 V, nominal cross section: 2.5 mm², number of potentials: 3, number of rows: 1, number of positions per row: 3, product range: MKDS 3, pitch: 5.08 mm, connection method: Screw connection with tension sleeve, screw head form: L Slotted, mounting: Wave soldering, conductor/PCB connection direction: 0 °, color: green, Pin layout: Linear pinning, Solder pin [P]: 5 mm, number of solder pins per potential: 1, type of packaging: packed in cardboard. The article can be aligned to create different nos. of positions!

EMG 45-LG - Electronics housing

2946191

<https://www.phoenixcontact.com/us/products/2946191>



Electronic housing, for PCB insertion, without screw connection terminal blocks and cover

2940032

<https://www.phoenixcontact.com/us/products/2940032>

MKDS 3/ 2-5,08 - PCB terminal block

1711725

<https://www.phoenixcontact.com/us/products/1711725>

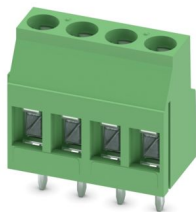


Printed circuit board terminal, nominal current: 24 A, rated voltage (III/2): 400 V, nominal cross section: 2.5 mm², number of potentials: 2, number of rows: 1, number of positions per row: 2, product range: MKDS 3, pitch: 5.08 mm, connection method: Screw connection with tension sleeve, screw head form: L Slotted, mounting: Wave soldering, conductor/PCB connection direction: 0 °, color: green, Pin layout: Linear pinning, Solder pin [P]: 5 mm, number of solder pins per potential: 1, type of packaging: packed in cardboard. The article can be aligned to create different nos. of positions!

MKDS 3/ 4-5,08 - PCB terminal block

1712805

<https://www.phoenixcontact.com/us/products/1712805>



Printed circuit board terminal, nominal current: 24 A, rated voltage (III/2): 400 V, nominal cross section: 2.5 mm², number of potentials: 4, number of rows: 1, number of positions per row: 4, product range: MKDS 3, pitch: 5.08 mm, connection method: Screw connection with tension sleeve, screw head form: L Slotted, mounting: Wave soldering, conductor/PCB connection direction: 0 °, color: green, Pin layout: Linear pinning, Solder pin [P]: 5 mm, number of solder pins per potential: 1, type of packaging: packed in cardboard. The article can be aligned to create different nos. of positions!

EMG 45-LG/SET - Electronics housing



2940032

<https://www.phoenixcontact.com/us/products/2940032>

Technical data

Product properties

Product type	Stackable housing set
Housing type	Component housing
Product family	EMG...-LG
Type	Lower housing part, removable cover as option, connection system integrated
Number of positions	16
Pitch	5.08 mm

Dimensions

Dimensional drawing	
Width	45 mm
Installed height	47.5 mm
Height NS 35/7,5	55 mm
	83 mm
	100 mm
Depth	75 mm
Length	75 mm
Pitch	5.08 mm

Material specifications

Color	green
Flammability rating according to UL 94	V0
Housing material	Polycarbonate fiber reinforced

Environmental and real-life conditions

Ambient conditions

Ambient temperature (operation)	-40 °C ... 125 °C
---------------------------------	-------------------

Mounting

Mounting type	DIN rail mounting
---------------	-------------------

EMG 45-LG/SET - Electronics housing

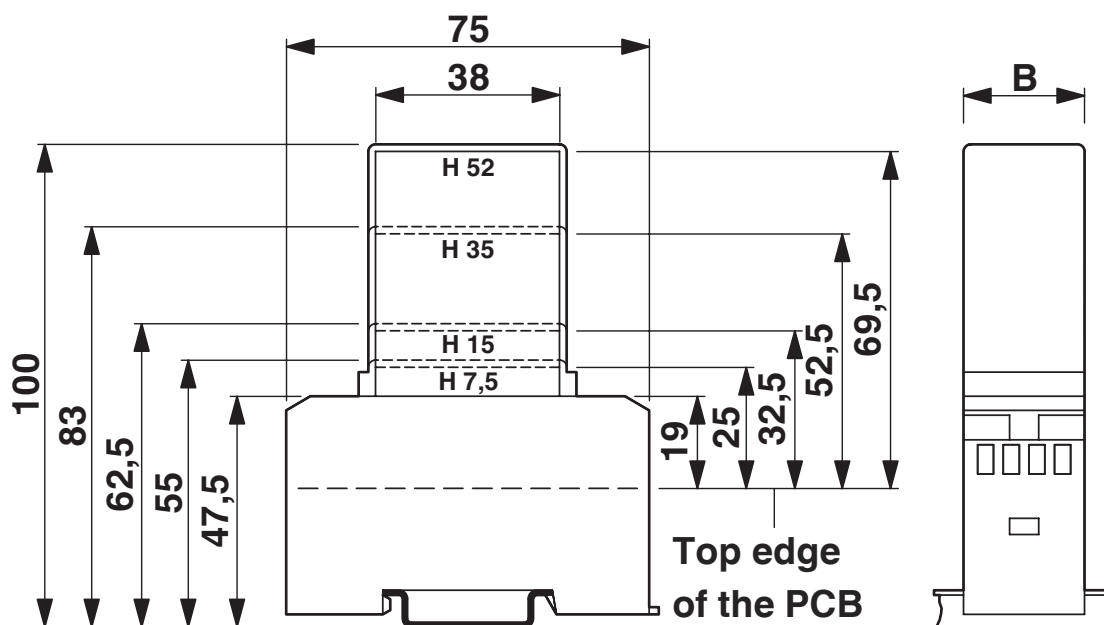
2940032

<https://www.phoenixcontact.com/us/products/2940032>



Drawings

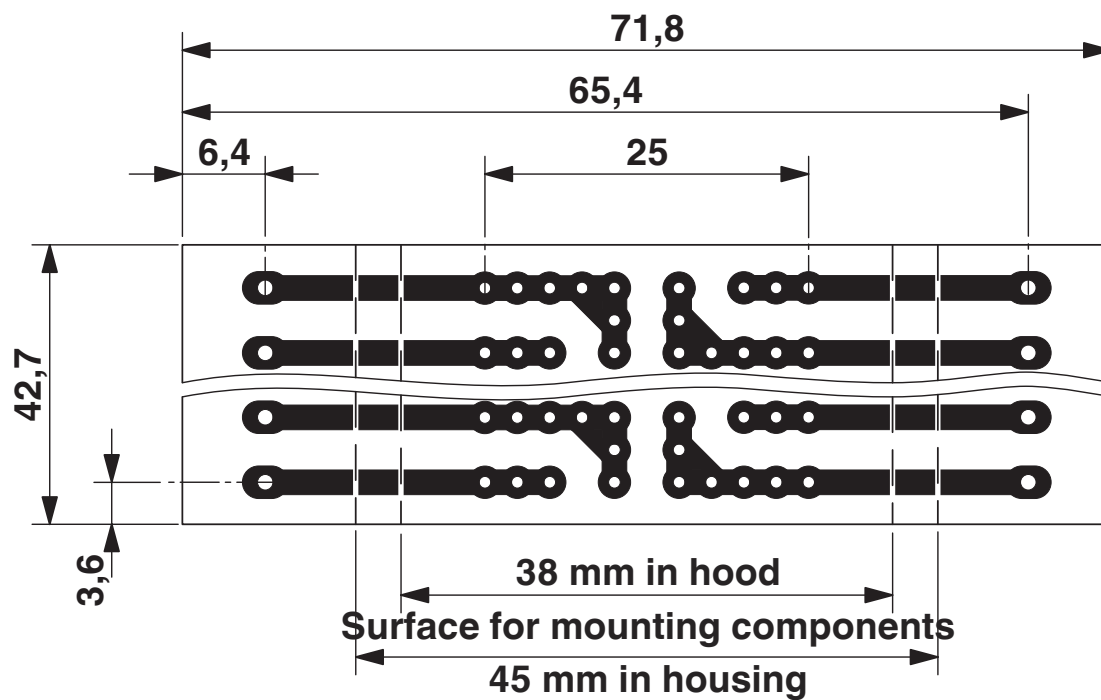
Dimensional drawing



1 = Top edge of the PCB

B = Housing width

Dimensional drawing



Pitch 5.08 mm

a = Area for mounting components, 38 mm in the hood

b = Area for mounting components, 45 mm in the housing

EMG 45-LG/SET - Electronics housing



2940032

<https://www.phoenixcontact.com/us/products/2940032>

Classifications

ETIM

ETIM 8.0	EC001031
----------	----------

UNSPSC

UNSPSC 21.0	31261500
-------------	----------

EMG 45-LG/SET - Electronics housing



2940032

<https://www.phoenixcontact.com/us/products/2940032>

Environmental product compliance

EU RoHS

Fulfills EU RoHS substance requirements	Yes
Exemption	6(c)

China RoHS

Environment friendly use period (EFUP)	EFUP-50
	An article-related China RoHS declaration table can be found in the download area for the respective article under "Manufacturer declaration". For all articles with EFUP-E, no China RoHS declaration table issued and required.

EU REACH SVHC

REACH candidate substance (CAS No.)	Lead(CAS: 7439-92-1)
-------------------------------------	----------------------

Phoenix Contact 2025 © - all rights reserved
<https://www.phoenixcontact.com>

Phoenix Contact USA
586 Fulling Mill Road
Middletown, PA 17057, United States
(+717) 944-1300
info@phoenixcon.com