

PSD-S ME T-P 45 - Mounting material



2700152

<https://www.phoenixcontact.com/us/products/2700152>

Please be informed that the data shown in this PDF document is generated from our online catalog. Please find the complete data in the user documentation. Our general terms of use for downloads are valid.



Tube, 45 mm long, Ø 25 mm, for direct tube mounting on the foldaway base

Commercial data

Item number	2700152
Packing unit	1 pc
Minimum order quantity	1 pc
Sales key	DR07
Product key	DRL117
GTIN	4046356491433
Weight per piece (including packing)	13.6 g
Weight per piece (excluding packing)	13.2 g
Customs tariff number	39269097
Country of origin	DE

PSD-S ME T-P 45 - Mounting material



2700152

<https://www.phoenixcontact.com/us/products/2700152>

Technical data

Notes

Note on application

Note on application

Only for industrial use

Product properties

Product type

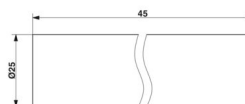
Assembly element

Product family

PSD-S

Dimensions

Dimensional drawing



Height

45 mm

Diameter

25 mm

Material specifications

Color

black

Material

PE

Environmental and real-life conditions

Ambient conditions

Ambient temperature (operation)

-30 °C ... 60 °C

Mounting

Mounting type

Tube mounting (for foldaway base)

Mounting position

any

PSD-S ME T-P 45 - Mounting material

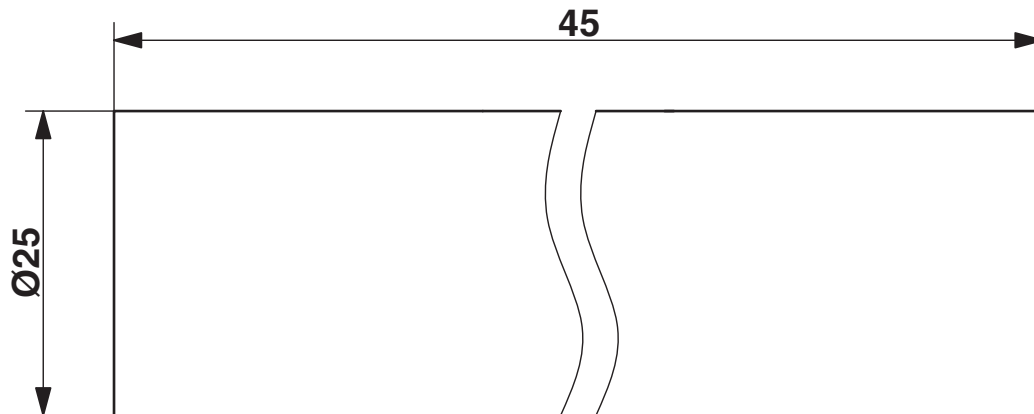


2700152

<https://www.phoenixcontact.com/us/products/2700152>

Drawings

Dimensional drawing



PSD-S ME T-P 45 - Mounting material



2700152

<https://www.phoenixcontact.com/us/products/2700152>

Classifications

ECLASS

ECLASS-13.0	27371236
ECLASS-15.0	27371236

ETIM

ETIM 9.0	EC001155
----------	----------

UNSPSC

UNSPSC 21.0	46171600
-------------	----------

PSD-S ME T-P 45 - Mounting material



2700152

<https://www.phoenixcontact.com/us/products/2700152>

Environmental product compliance

EU RoHS	
Fulfills EU RoHS substance requirements	Yes, No exemptions
China RoHS	
Environment friendly use period (EFUP)	EFUP-E
	No hazardous substances above the limits
EU REACH SVHC	
REACH candidate substance (CAS No.)	No substance above 0.1 wt%

Phoenix Contact 2025 © - all rights reserved
<https://www.phoenixcontact.com>

Phoenix Contact USA
586 Fulling Mill Road
Middletown, PA 17057, United States
(+717) 944-1300
info@phoenixcon.com