

RC-12P1N12K0GA - Cable connector



1597242

<https://www.phoenixcontact.com/us/products/1597242>

Please be informed that the data shown in this PDF document is generated from our online catalog. Please find the complete data in the user documentation. Our general terms of use for downloads are valid.



M23, Cable connector, series: RC, straight plastic-sheathed, shielded: yes, Screw locking mechanism, No. of pos.: 12, Direction of rotation: Standard, contact connection type: Pin, Solder cup, cable diameter range: 5.5 mm ... 6.5 mm, coding: N, Alternative product in accordance with RoHS II without Exemption 6c (Pb < 0.1 %) item no.: 1240817

Commercial data

Item number	1597242
Packing unit	20 pc
Minimum order quantity	1 pc
Note	Made to order (non-returnable)
Product key	ABRAFA
GTIN	4046356215114
Weight per piece (including packing)	47.76 g
Weight per piece (excluding packing)	47.76 g
Country of origin	DE

RC-12P1N12K0GA - Cable connector



1597242

<https://www.phoenixcontact.com/us/products/1597242>

Technical data

Product properties

Product type	Circular connector (cable-side)
--------------	---------------------------------

Material specifications

Housing material	Metal
------------------	-------

Connector

Insulating body

Coding	N
Material (Insulating body)	PBT
Material (Contact)	CuZn
Material (Contact surface)	Ni/Au
Insertion/withdrawal cycles	100
Connection method	Solder cup
Contact switching type	Pin
Application	Signal
Number of positions	12
Direction of rotation	Standard
Connection profile	12
Number Contact (Contact group 1)	12
Diameter Contact (Contact group 1)	1 mm
Litz wire cross-section min. Contact (Contact group 1)	0.08 mm ²
Litz wire cross-section max. Contact (Contact group 1)	1 mm ²
Rated current Contact (Contact group 1)	8 A (for max. connection cross section)
Rated voltage Contact (Contact group 1)	48 V AC
	74 V DC
Rated surge voltage	1.5 kV
Overvoltage category	III
Degree of pollution	3

Housing

Type	Cable connector housing
Thread type	M23
Design	straight plastic-sheathed
Type of locking	Screw locking mechanism
Pg screw connection	none
Material (Housing)	GD-Zn
Material (Rotating parts)	CuZn
Degree of protection (plugged in)	IP67

Seal

External cable diameter	5.5 mm ... 6.5 mm
-------------------------	-------------------

RC-12P1N12K0GA - Cable connector



1597242

<https://www.phoenixcontact.com/us/products/1597242>

Seal material	NBR
---------------	-----

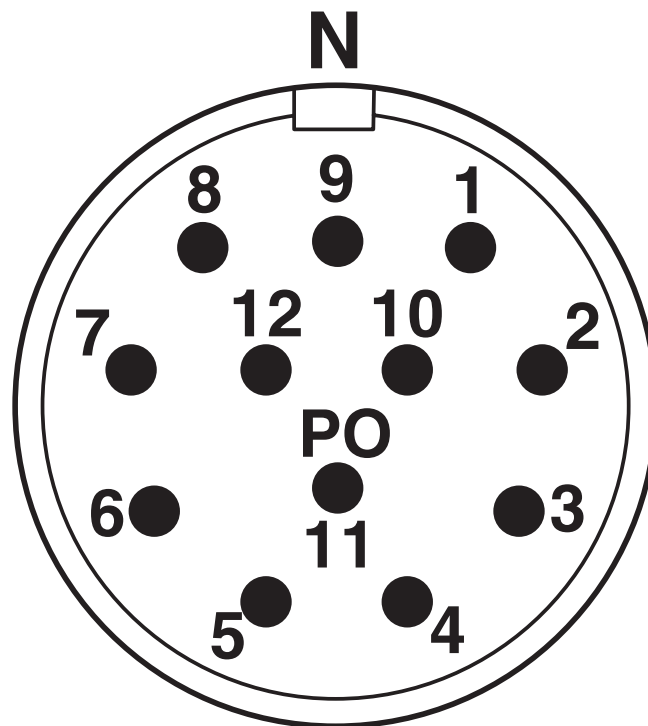
RC-12P1N12K0GA - Cable connector

1597242

<https://www.phoenixcontact.com/us/products/1597242>

Drawings

Schematic diagram



Connector pin assignment

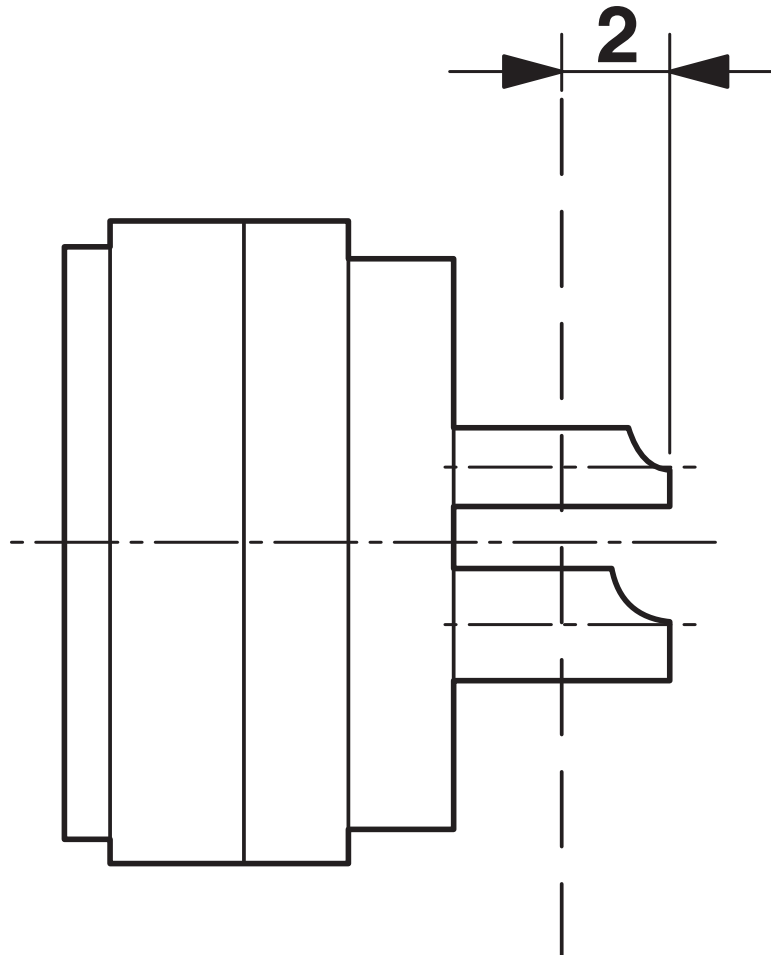
RC-12P1N12K0GA - Cable connector

1597242

<https://www.phoenixcontact.com/us/products/1597242>



Schematic diagram



Dimensional drawing

RC-12P1N12K0GA - Cable connector



1597242

<https://www.phoenixcontact.com/us/products/1597242>

Classifications

ECLASS

ECLASS-13.0	27440116
-------------	----------

ETIM

ETIM 8.0	EC002635
----------	----------

UNSPSC

UNSPSC 21.0	39121400
-------------	----------

RC-12P1N12K0GA - Cable connector



1597242

<https://www.phoenixcontact.com/us/products/1597242>

Environmental product compliance

EU RoHS

Fulfills EU RoHS substance requirements	Yes
Exemption	6(c)

China RoHS

Environment friendly use period (EFUP)	EFUP-50
	An article-related China RoHS declaration table can be found in the download area for the respective article under "Manufacturer declaration". For all articles with EFUP-E, no China RoHS declaration table issued and required.

EU REACH SVHC

REACH candidate substance (CAS No.)	Lead(CAS: 7439-92-1)
SCIP	b2059081-9862-48d4-a732-36036c72b18a

Phoenix Contact 2025 © - all rights reserved

<https://www.phoenixcontact.com>

Phoenix Contact USA
586 Fulling Mill Road
Middletown, PA 17057, United States
(+717) 944-1300
info@phoenixcon.com