

RC-12P1N128059 - Cable connector



1596984

<https://www.phoenixcontact.com/us/products/1596984>

Please be informed that the data shown in this PDF document is generated from our online catalog. Please find the complete data in the user documentation. Our general terms of use for downloads are valid.



M23, Cable connector, straight, Screw locking mechanism, No. of pos.: 12, Direction of rotation: Standard, contact connection type: Pin, Solder cup, cable diameter range: 4.5 mm ... 5.5 mm, coding: N, this item is expected to be lead-free from Q1 2027 in accordance with RoHS II without exception 6c (Pb < 0.1%), a lead-free alternative is possible on request in advance

Commercial data

| | |
|--------------------------------------|--------------------------------|
| Item number | 1596984 |
| Packing unit | 20 pc |
| Minimum order quantity | 1 pc |
| Note | Made to order (non-returnable) |
| Product key | ABRAFA |
| GTIN | 4046356213783 |
| Weight per piece (including packing) | 76.65 g |
| Weight per piece (excluding packing) | 72.606 g |
| Country of origin | DE |

RC-12P1N128059 - Cable connector



1596984

<https://www.phoenixcontact.com/us/products/1596984>

Technical data

Product properties

| | |
|--------------|---------------------------------|
| Product type | Circular connector (cable-side) |
|--------------|---------------------------------|

Connector

Insulating body

| | |
|--|---|
| Coding | N |
| Material (Insulating body) | PBT |
| Material (Contact) | CuZn |
| Material (Contact surface) | Ni/Au |
| Insertion/withdrawal cycles | 100 |
| Connection method | Solder cup |
| Contact switching type | Pin |
| Application | Signal |
| Number of positions | 12 |
| Direction of rotation | Standard |
| Connection profile | 12 |
| Number Contact (Contact group 1) | 12 |
| Diameter Contact (Contact group 1) | 1 mm |
| Litz wire cross-section min. Contact (Contact group 1) | 0.08 mm ² |
| Litz wire cross-section max. Contact (Contact group 1) | 1 mm ² |
| Rated current Contact (Contact group 1) | 8 A (for max. connection cross section) |
| Rated voltage Contact (Contact group 1) | 48 V AC |
| | 74 V DC |
| Rated surge voltage | 1.5 kV |
| Overvoltage category | III |
| Degree of pollution | 3 |

Housing

| | |
|-----------------------------------|----------------------------------|
| Note | Order contact inserts separately |
| Type | Cable connector housing |
| Thread type | M23 |
| Design | straight |
| Type of locking | Screw locking mechanism |
| Pg screw connection | none |
| Material (Housing) | Metal |
| Degree of protection (plugged in) | IP65 |
| | IP67 |
| | IP68 |

Seal

| | |
|-------------------------|-------------------|
| External cable diameter | 4.5 mm ... 5.5 mm |
|-------------------------|-------------------|

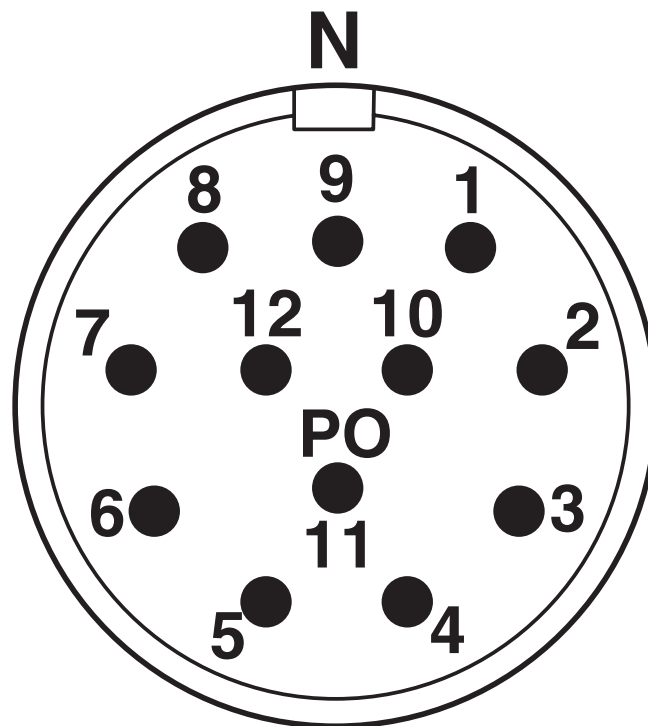
RC-12P1N128059 - Cable connector

1596984

<https://www.phoenixcontact.com/us/products/1596984>

Drawings

Schematic diagram



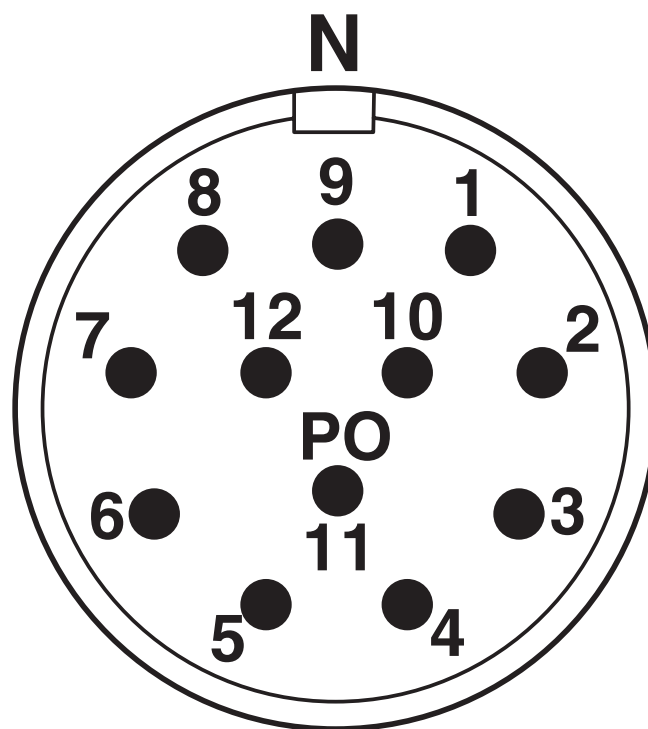
Connector pin assignment

RC-12P1N128059 - Cable connector

1596984

<https://www.phoenixcontact.com/us/products/1596984>

Schematic diagram



Connector pin assignment

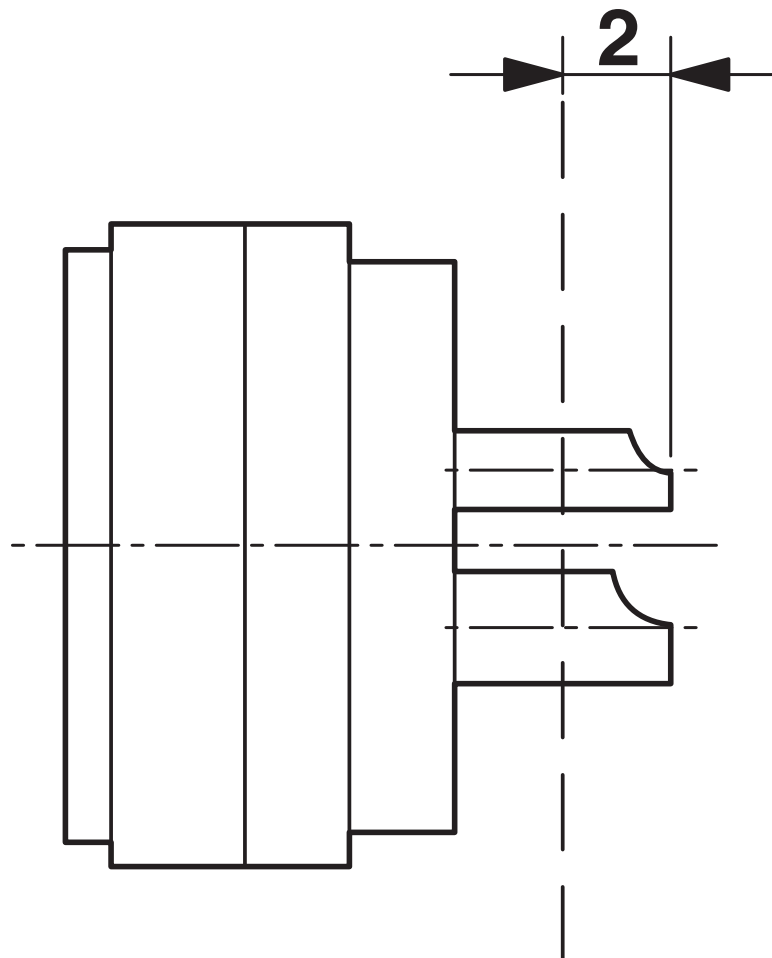
RC-12P1N128059 - Cable connector

1596984

<https://www.phoenixcontact.com/us/products/1596984>



Schematic diagram



Dimensional drawing

RC-12P1N128059 - Cable connector



1596984

<https://www.phoenixcontact.com/us/products/1596984>

Classifications

ECLASS

| | |
|-------------|----------|
| ECLASS-13.0 | 27440116 |
| ECLASS-15.0 | 27440116 |

ETIM

| | |
|----------|----------|
| ETIM 9.0 | EC002635 |
|----------|----------|

UNSPSC

| | |
|-------------|----------|
| UNSPSC 21.0 | 39121400 |
|-------------|----------|

RC-12P1N128059 - Cable connector



1596984

<https://www.phoenixcontact.com/us/products/1596984>

Environmental product compliance

EU RoHS

| | |
|---|------|
| Fulfills EU RoHS substance requirements | Yes |
| Exemption | 6(c) |

China RoHS

| | |
|--|---|
| Environment friendly use period (EFUP) | EFUP-50 |
| | An article-related China RoHS declaration table can be found in the download area for the respective article under "Manufacturer declaration". For all articles with EFUP-E, no China RoHS declaration table issued and required. |

EU REACH SVHC

| | |
|-------------------------------------|--------------------------------------|
| REACH candidate substance (CAS No.) | Lead(CAS: 7439-92-1) |
| SCIP | 9b76b122-ab39-4614-8342-d8dfc5c68aae |

Phoenix Contact 2025 © - all rights reserved

<https://www.phoenixcontact.com>

Phoenix Contact USA
586 Fulling Mill Road
Middletown, PA 17057, United States
(+717) 944-1300
info@phoenixcon.com