

RC-12P1N127600 - Coupler connector



1596953

<https://www.phoenixcontact.com/us/products/1596953>

Please be informed that the data shown in this PDF document is generated from our online catalog. Please find the complete data in the user documentation. Our general terms of use for downloads are valid.



M23, Coupler connector, series: RC, straight, shielded: no, Screw locking mechanism, No. of pos.: 12, Direction of rotation: Standard, contact connection type: Pin, Solder cup, coding: N, this item is expected to be lead-free from Q2 2026 in accordance with RoHS II without exception 6c (Pb < 0.1%), a lead-free alternative is possible on request in advance

Commercial data

Item number	1596953
Packing unit	20 pc
Minimum order quantity	1 pc
Product key	ABRAFG
GTIN	4046356213592
Weight per piece (including packing)	92.16 g
Weight per piece (excluding packing)	85.17 g
Country of origin	DE

RC-12P1N127600 - Coupler connector



1596953

<https://www.phoenixcontact.com/us/products/1596953>

Technical data

Product properties

Product type	Circular connector (cable-side)
Thread type	M23

Material specifications

Flammability rating according to UL 94	V0
--	----

Connector

Insulating body

Coding	N
Material (Insulating body)	PBT
Material (Contact)	CuZn
Material (Contact surface)	Ni/Au
Insertion/withdrawal cycles	100
Connection method	Solder cup
Contact switching type	Pin
Application	Signal
Number of positions	12
Direction of rotation	Standard
Connection profile	12
Number Contact (Contact group 1)	12
Diameter Contact (Contact group 1)	1 mm
Litz wire cross-section min. Contact (Contact group 1)	0.08 mm ²
Litz wire cross-section max. Contact (Contact group 1)	1 mm ²
Rated current Contact (Contact group 1)	8 A (for max. connection cross section)
Rated voltage Contact (Contact group 1)	48 V AC
	74 V DC
Rated surge voltage	1.5 kV
Overvoltage category	III
Degree of pollution	3

Housing

Type	Coupling housing
Thread type	M23
Design	straight
Type of locking	Screw locking mechanism
Pg screw connection	Pg11
Material (Housing)	GD-Zn
Material (Housing surface)	Ni
Material (Rotating parts)	CuZn
	IP65

RC-12P1N127600 - Coupler connector



1596953

<https://www.phoenixcontact.com/us/products/1596953>

Degree of protection (plugged in)	IP67
	IP68

Environmental and real-life conditions

Ambient conditions	
Degree of protection	IP67

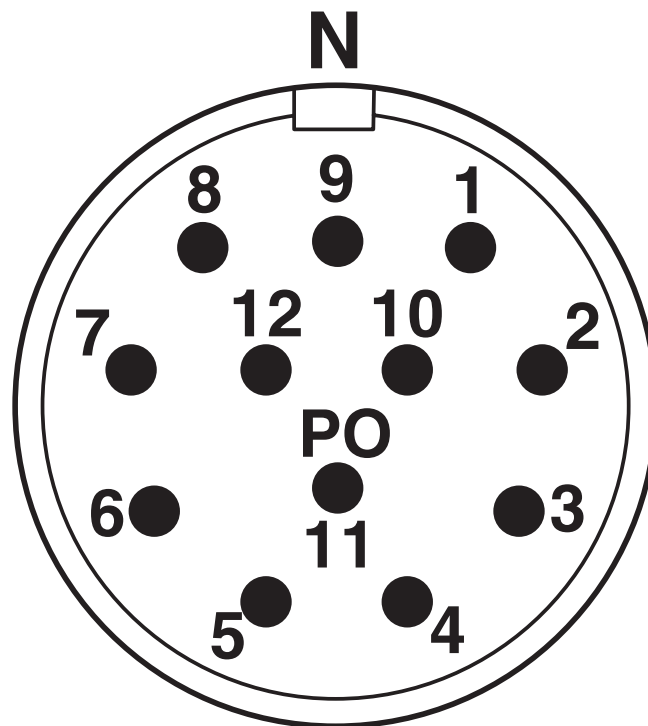
RC-12P1N127600 - Coupler connector

1596953

<https://www.phoenixcontact.com/us/products/1596953>

Drawings

Schematic diagram



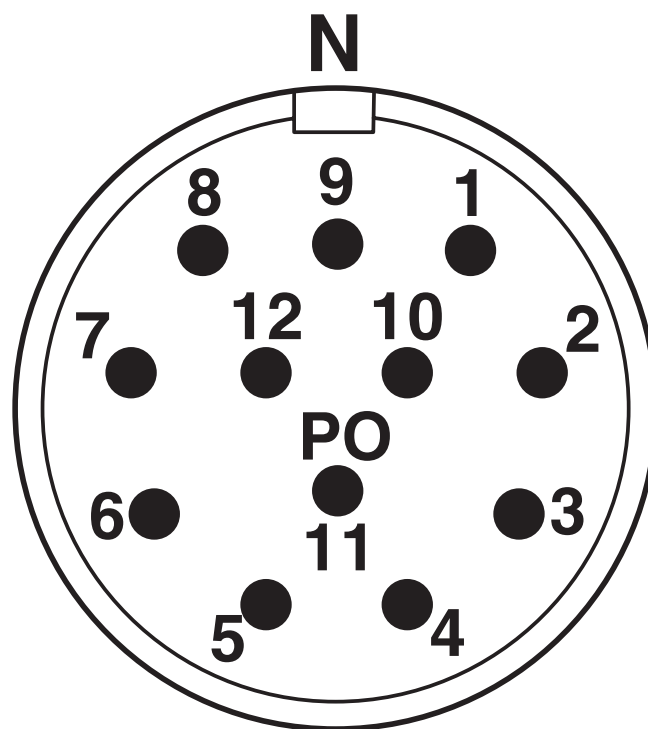
Connector pin assignment

RC-12P1N127600 - Coupler connector

1596953

<https://www.phoenixcontact.com/us/products/1596953>

Schematic diagram



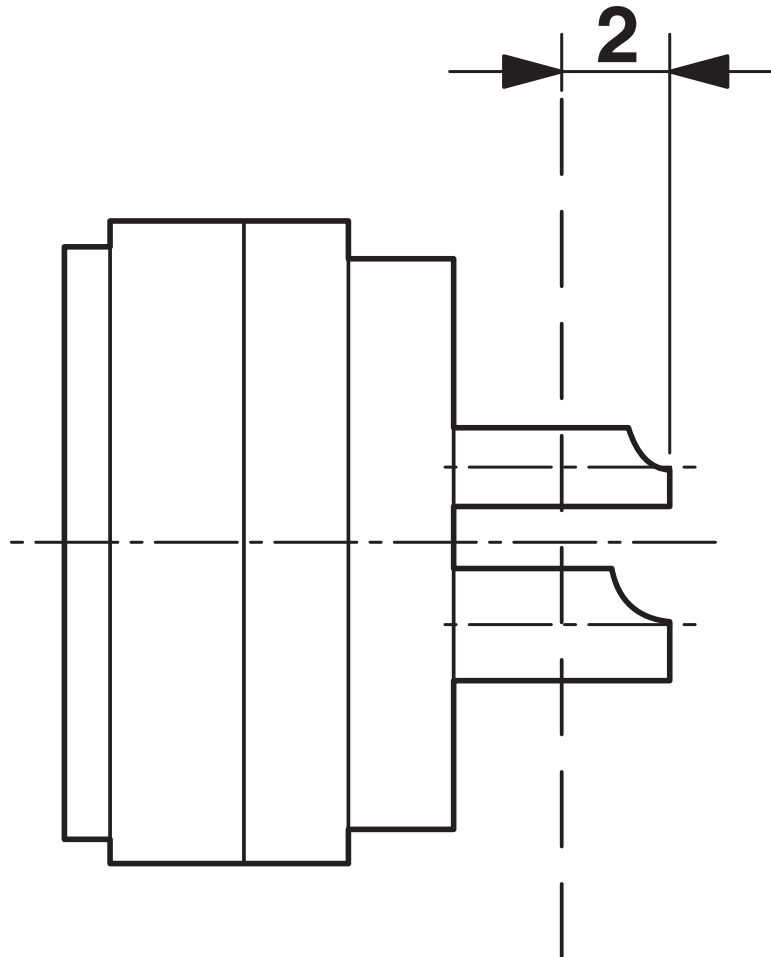
Connector pin assignment

RC-12P1N127600 - Coupler connector

1596953

<https://www.phoenixcontact.com/us/products/1596953>

Schematic diagram



Dimensional drawing

RC-12P1N127600 - Coupler connector



1596953

<https://www.phoenixcontact.com/us/products/1596953>

Classifications

ECLASS

ECLASS-13.0	27440116
ECLASS-15.0	27440116

ETIM

ETIM 9.0	EC002635
----------	----------

UNSPSC

UNSPSC 21.0	39121400
-------------	----------

RC-12P1N127600 - Coupler connector



1596953

<https://www.phoenixcontact.com/us/products/1596953>

Environmental product compliance

EU RoHS

Fulfills EU RoHS substance requirements	Yes
Exemption	6(c)

China RoHS

Environment friendly use period (EFUP)	EFUP-50
	An article-related China RoHS declaration table can be found in the download area for the respective article under "Manufacturer declaration". For all articles with EFUP-E, no China RoHS declaration table issued and required.

EU REACH SVHC

REACH candidate substance (CAS No.)	Lead(CAS: 7439-92-1)
SCIP	98e29556-38f9-49a2-b3f5-85d4469cb6fa

Phoenix Contact 2025 © - all rights reserved

<https://www.phoenixcontact.com>

Phoenix Contact USA
586 Fulling Mill Road
Middletown, PA 17057, United States
(+717) 944-1300
info@phoenixcon.com