

# EB 3-20 - Insertion bridge

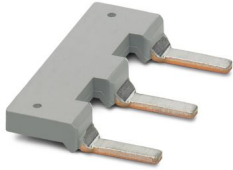


0206147

<https://www.phoenixcontact.com/us/products/0206147>

Please be informed that the data shown in this PDF document is generated from our online catalog. Please find the complete data in the user documentation. Our general terms of use for downloads are valid.

Insertion bridge, 3-pos., fully insulated



## Commercial data

|                                      |               |
|--------------------------------------|---------------|
| Item number                          | 0206147       |
| Packing unit                         | 10 pc         |
| Minimum order quantity               | 1 pc          |
| Product key                          | BE1Z2X        |
| GTIN                                 | 4017918098889 |
| Weight per piece (including packing) | 14.73 g       |
| Weight per piece (excluding packing) | 14.73 g       |
| Country of origin                    | PL            |

# EB 3-20 - Insertion bridge



0206147

<https://www.phoenixcontact.com/us/products/0206147>

## Technical data

### Product properties

|                     |                  |
|---------------------|------------------|
| Product type        | Insertion bridge |
| Number of positions | 3                |

### Material specifications

|       |                 |
|-------|-----------------|
| Color | gray (RAL 7042) |
|-------|-----------------|

# EB 3-20 - Insertion bridge



0206147

<https://www.phoenixcontact.com/us/products/0206147>

## Classifications

### ETIM

|          |          |
|----------|----------|
| ETIM 8.0 | EC000489 |
|----------|----------|

### UNSPSC

|             |          |
|-------------|----------|
| UNSPSC 21.0 | 39121400 |
|-------------|----------|

# EB 3-20 - Insertion bridge



0206147

<https://www.phoenixcontact.com/us/products/0206147>

## Environmental product compliance

### EU RoHS

|   |                    |
|---|--------------------|
| Fulfills EU RoHS substance requirements | Yes, No exemptions |
|---|--------------------|

### China RoHS

|  |  |
|--|--|
| Environment friendly use period (EFUP) | EFUP-E                                   |
|  | No hazardous substances above the limits |

### EU REACH SVHC

|                                     |                            |
|-------------------------------------|----------------------------|
| REACH candidate substance (CAS No.) | No substance above 0.1 wt% |
|-------------------------------------|----------------------------|

Phoenix Contact 2025 © - all rights reserved  
<https://www.phoenixcontact.com>

Phoenix Contact USA  
586 Fulling Mill Road  
Middletown, PA 17057, United States  
(+717) 944-1300  
[info@phoenixcon.com](mailto:info@phoenixcon.com)