

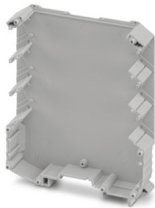
# ME MAX 22,5 GEH-R G 3-3 GY - Housing half shell



2202159

<https://www.phoenixcontact.com/us/products/2202159>

Please be informed that the data shown in this PDF document is generated from our online catalog. Please find the complete data in the user documentation. Our general terms of use for downloads are valid.



DIN rail housing, Housing half shell (right), tall design, without vents, width: 16.3 mm, height: 99 mm, depth: 112.85 mm, color: gray (similar RAL 7042), cross connection: DIN rail bus connector (optional)

## Your advantages

- Easy installation
- Variety of connection technology

## Commercial data

Item number	2202159
Packing unit	50 pc
Minimum order quantity	50 pc
Note	Made to order (non-returnable)
Sales key	AC08
Product key	ACHABZ
GTIN	4055626004280
Weight per piece (including packing)	27.22 g
Weight per piece (excluding packing)	23.15 g
Customs tariff number	85389099
Country of origin	DE

# ME MAX 22,5 GEH-R G 3-3 GY - Housing half shell



2202159

<https://www.phoenixcontact.com/us/products/2202159>

## Technical data

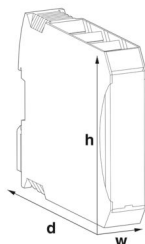
### Notes

Assembly note	Please observe the application note in the download area.
Recommendation	Material of contact pads for bus connector, galvanic gold (hard gold)

### Product properties

Product type	Housing half shells
Housing type	DIN rail housing
Housing series	ME-MAX
Product family	ME MAX.. 3-3
Number of rows	3
Type	Housing half shell (right), tall design
Ventilation openings present	no

### Dimensions

Dimensional drawing	
Width	16.3 mm
Height	99 mm
Depth	112.85 mm
Depth from top edge of DIN rail	107 mm

### PCB design

PCB thickness	1.4 mm ... 1.8 mm
---------------	-------------------

### Material specifications

Color (Housing)	gray (RAL 7042)
Flammability rating according to UL 94	V0
CTI according to IEC 60112	600
Housing material	PA
Surface characteristics	untreated

### Environmental and real-life conditions

#### Ambient conditions

Max. IP code to attain	IP20
Ambient temperature (operation)	-40 °C ... 105 °C (depending on power dissipation)

# ME MAX 22,5 GEH-R G 3-3 GY - Housing half shell



2202159

<https://www.phoenixcontact.com/us/products/2202159>

Ambient temperature (storage/transport)	-40 °C ... 55 °C
Ambient temperature (assembly)	-5 °C ... 100 °C
Relative humidity (storage/transport)	80 %

## PCB data

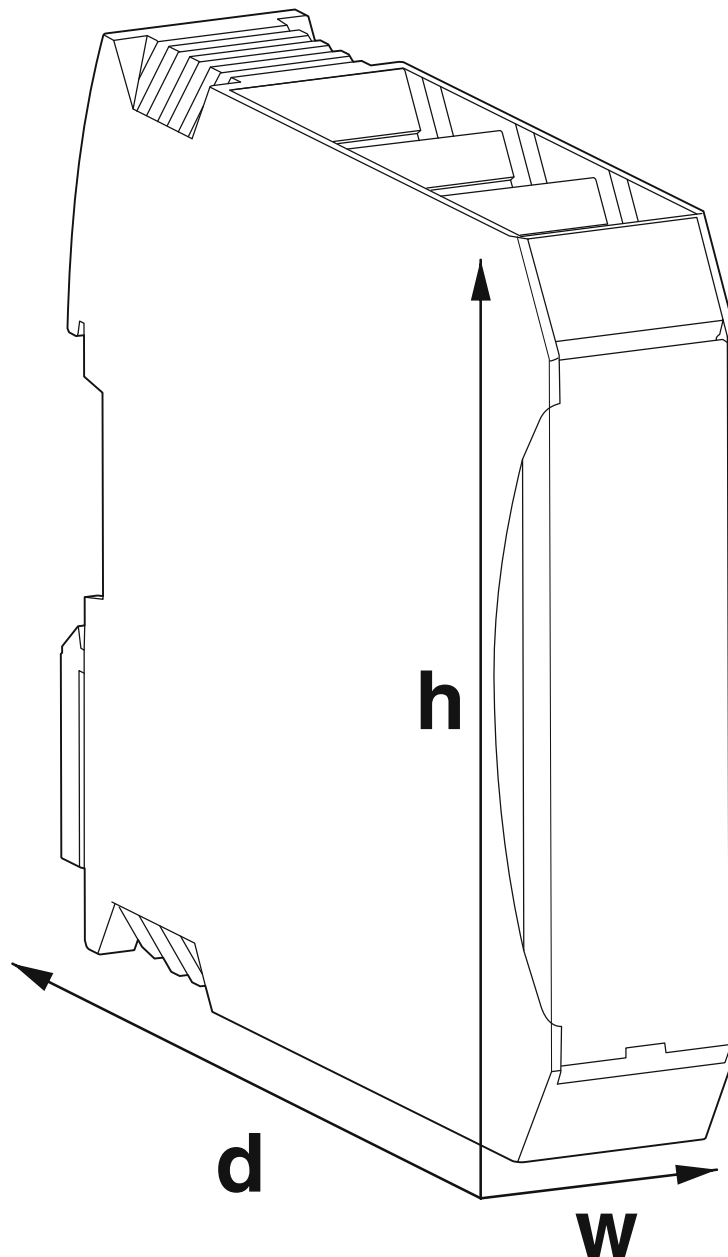
Type of PCB mount	Latching
Thickness of the PCB	1.4 mm ... 1.8 mm

## Mounting

Mounting type	DIN rail mounting
---------------	-------------------

## Drawings

Dimensional drawing



Schematic view

# ME MAX 22,5 GEH-R G 3-3 GY - Housing half shell



2202159

<https://www.phoenixcontact.com/us/products/2202159>

## Approvals

🔗 To download certificates, visit the product detail page: <https://www.phoenixcontact.com/us/products/2202159>



**UL Recognized**

Approval ID: E240868

# ME MAX 22,5 GEH-R G 3-3 GY - Housing half shell



2202159

<https://www.phoenixcontact.com/us/products/2202159>

## Classifications

### ECLASS

ECLASS-13.0	27190602
-------------	----------

### ETIM

ETIM 9.0	EC002779
----------	----------

### UNSPSC

UNSPSC 21.0	31261500
-------------	----------

# ME MAX 22,5 GEH-R G 3-3 GY - Housing half shell



2202159

<https://www.phoenixcontact.com/us/products/2202159>

## Environmental product compliance

EU RoHS	
Fulfills EU RoHS substance requirements	Yes, No exemptions
China RoHS	
Environment friendly use period (EFUP)	EFUP-E
	No hazardous substances above the limits
EU REACH SVHC	
REACH candidate substance (CAS No.)	No substance above 0.1 wt%

Phoenix Contact 2025 © - all rights reserved  
<https://www.phoenixcontact.com>

Phoenix Contact USA  
586 Fulling Mill Road  
Middletown, PA 17057, United States  
(+717) 944-1300  
[info@phoenixcon.com](mailto:info@phoenixcon.com)