

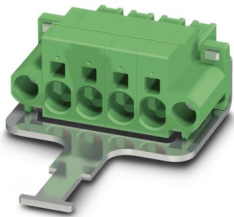
SPC 5/ 4-STF-SH-7,62 - PCB connector



1704071

<https://www.phoenixcontact.com/us/products/1704071>

Please be informed that the data shown in this PDF document is generated from our online catalog. Please find the complete data in the user documentation. Our general terms of use for downloads are valid.



PCB connector, nominal cross section: 6 mm², color: green, nominal current: 32 A, rated voltage (III/2): 1000 V, contact surface: Sn, contact connection type: Socket, number of potentials: 4, number of rows: 1, number of positions: 4, number of connections: 4, product range: SPC 5/-STF-SH, pitch: 7.62 mm, connection method: Push-in spring connection, conductor/PCB connection direction: 0 °, locking clip: - without locking clip, plug-in system: COMBICON PC 5, Electrical properties: shielded, locking: Screw locking mechanism, mounting method: Screw flange, type of packaging: packed in cardboard

Your advantages

- Time saving push-in connection, tools not required
- Defined contact force ensures that contact remains stable over the long term
- Clamping space opened by means of fixed screwdriver enables convenient conductor connection
- Integrated double steel spring provides additional safety in the event of temperature and power fluctuations
- Optimized for tight installation situations: operation and conductor connection from one direction
- Shield for adherence to the EMC requirements and an optional strain relief
- Screwable flange for superior mechanical stability
- 600 V UL approval in the smallest of dimensions

Commercial data

| | |
|--------------------------------------|---------------|
| Item number | 1704071 |
| Packing unit | 50 pc |
| Minimum order quantity | 50 pc |
| Sales key | AA04 |
| Product key | AADFBC |
| GTIN | 4046356031820 |
| Weight per piece (including packing) | 36.54 g |
| Weight per piece (excluding packing) | 25.2 g |
| Customs tariff number | 85366990 |
| Country of origin | IN |

SPC 5/ 4-STF-SH-7,62 - PCB connector



1704071

<https://www.phoenixcontact.com/us/products/1704071>

Technical data

Product properties

| | |
|---------------------------|-----------------------|
| Product type | PCB connector |
| Product family | SPC 5/...-STF-SH |
| Product line | COMBICON Connectors L |
| Type | Standard |
| Number of positions | 4 |
| Pitch | 7.62 mm |
| Number of connections | 4 |
| Number of rows | 1 |
| Number of potentials | 4 |
| Mounting flange | Screw flange |
| Electrical characteristic | shielded |

Electrical properties

Properties

| | |
|-----------------------------|----------|
| Nominal current I_N | 32 A |
| Nominal voltage U_N | 1000 V |
| Rated voltage (III/3) | 1000 V |
| Rated surge voltage (III/3) | 8 kV |
| Rated voltage (III/2) | 1000 V |
| Rated surge voltage (III/2) | 8 kV |
| Rated voltage (II/2) | 1000 V |
| Rated surge voltage (II/2) | 6 kV |
| Electrical characteristic | shielded |

Connection data

Connection technology

| | |
|-------------------------|-------------------|
| Type | Standard |
| Connector system | COMBICON PC 5 |
| Nominal cross section | 6 mm ² |
| Contact connection type | Socket |

Interlock

| | |
|-------------------|-------------------------|
| Locking type | Screw locking mechanism |
| Mounting flange | Screw flange |
| Tightening torque | 0.3 Nm ... 0.7 Nm |

Conductor connection

| | |
|------------------------------------|--|
| Connection method | Push-in spring connection |
| Conductor/PCB connection direction | 0 ° |
| Conductor cross section rigid | 0.2 mm ² ... 10 mm ² |

SPC 5/ 4-STF-SH-7,62 - PCB connector



1704071

<https://www.phoenixcontact.com/us/products/1704071>

| | |
|---|--------------------------|
| Conductor cross section flexible | 0.2 mm² ... 6 mm² |
| Conductor cross section AWG | 24 ... 8 |
| Conductor cross section flexible, with ferrule without plastic sleeve | 0.25 mm² ... 6 mm² |
| Conductor cross section, flexible, with ferrule, with plastic sleeve | 0.25 mm² ... 4 mm² |
| 2 conductors with the same cross section, flexible, with TWIN ferrule with plastic sleeve | 0.25 mm² ... 1.5 mm² |
| Cylindrical gauge a x b / diameter | 4.3 mm x 4.0 mm / 4.0 mm |
| Stripping length | 15 mm |

Specifications for ferrules without insulating collar

| | |
|--|--|
| recommended crimping tool | 1212034 CRIMPFOX 6 |
| | 1213144 CRIMPFOX CENTRUS 6S |
| | 1213146 CRIMPFOX CENTRUS 6H |
| ferrules without insulating collar, according to DIN 46228-1 | Cross section: 0.5 mm²; Length: 10 mm ... 15 mm |
| | Cross section: 0.75 mm²; Length: 10 mm ... 15 mm |
| | Cross section: 1 mm²; Length: 10 mm ... 15 mm |
| | Cross section: 1.5 mm²; Length: 12 mm ... 15 mm |
| | Cross section: 2.5 mm²; Length: 12 mm ... 15 mm |
| | Cross section: 4 mm²; Length: 12 mm ... 15 mm |
| | Cross section: 6 mm²; Length: 12 mm ... 15 mm |

Specifications for ferrules with insulating collar

| | |
|---|--|
| recommended crimping tool | 1212034 CRIMPFOX 6 |
| | 1213144 CRIMPFOX CENTRUS 6S |
| | 1213146 CRIMPFOX CENTRUS 6H |
| ferrules with insulating collar, according to DIN 46228-4 | Cross section: 0.5 mm²; Length: 10 mm ... 15 mm |
| | Cross section: 0.75 mm²; Length: 12 mm ... 15 mm |
| | Cross section: 1 mm²; Length: 12 mm ... 15 mm |
| | Cross section: 1.5 mm²; Length: 12 mm ... 15 mm |
| | Cross section: 2.5 mm²; Length: 12 mm ... 15 mm |
| | Cross section: 4 mm²; Length: 12 mm ... 15 mm |

Material specifications

Material data - contact

| | |
|--|--|
| Note | WEEE/RoHS-compliant, free of whiskers according to IEC 60068-2-82/JEDEC JESD 201 |
| Contact material | Cu alloy |
| Surface characteristics | hot-dip tin-plated |
| Metal surface terminal point (top layer) | Tin (4 - 8 µm Sn) |
| Metal surface contact area (top layer) | Tin (4 - 8 µm Sn) |

Material data - housing

| | |
|---------------------------|--------------|
| Color (Housing) | green (6021) |
| Insulating material | PA |
| Insulating material group | I |

SPC 5/ 4-STF-SH-7,62 - PCB connector

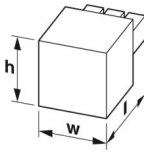


1704071

<https://www.phoenixcontact.com/us/products/1704071>

| | |
|---|--------|
| CTI according to IEC 60112 | 600 |
| Flammability rating according to UL 94 | V0 |
| Glow wire flammability index GWFI according to EN 60695-2-12 | 850 |
| Glow wire ignition temperature GWIT according to EN 60695-2-13 | 775 |
| Temperature for the ball pressure test according to EN 60695-10-2 | 125 °C |

Dimensions

| | |
|---------------------|--|
| Dimensional drawing |  |
| Pitch | 7.62 mm |
| Width [w] | 30.46 mm |
| Height [h] | 21.4 mm |
| Length [l] | 78.7 mm |

Mounting

Flange

| | |
|-------------------|-------------------|
| Tightening torque | 0.3 Nm ... 0.7 Nm |
|-------------------|-------------------|

Notes

| | |
|--------------------|--|
| Notes on operation | In accordance with IEC 61984, COMBICON connectors have no switching power (COC). During designated use, they must not be plugged in or disconnected when carrying voltage or under load. |
|--------------------|--|

Environmental and real-life conditions

Ambient conditions

| | |
|---|---|
| Ambient temperature (operation) | -40 °C ... 100 °C (dependent on the derating curve) |
| Ambient temperature (storage/transport) | -40 °C ... 70 °C |
| Relative humidity (storage/transport) | 30 % ... 70 % |
| Ambient temperature (assembly) | -5 °C ... 100 °C |

Electrical tests

Air clearances and creepage distances |

| | |
|--|---------------------|
| Specification | IEC 60664-1:2007-04 |
| Insulating material group | I |
| Comparative tracking index (IEC 60112) | CTI 600 |
| Rated insulation voltage (III/3) | 1000 V |
| Rated surge voltage (III/3) | 8 kV |
| minimum clearance value - non-homogenous field (III/3) | 8 mm |
| minimum creepage distance (III/3) | 12.5 mm |

SPC 5/ 4-STF-SH-7,62 - PCB connector



1704071

<https://www.phoenixcontact.com/us/products/1704071>

| | |
|--|--------|
| Rated insulation voltage (III/2) | 1000 V |
| Rated surge voltage (III/2) | 8 kV |
| minimum clearance value - non-homogenous field (III/2) | 8 mm |
| minimum creepage distance (III/2) | 8 mm |
| Rated insulation voltage (II/2) | 1000 V |
| Rated surge voltage (II/2) | 6 kV |
| minimum clearance value - non-homogenous field (II/2) | 8 mm |
| minimum creepage distance (II/2) | 8 mm |

Packaging specifications

| | |
|-------------------|---------------------|
| Type of packaging | packed in cardboard |
|-------------------|---------------------|

SPC 5/ 4-STF-SH-7,62 - PCB connector

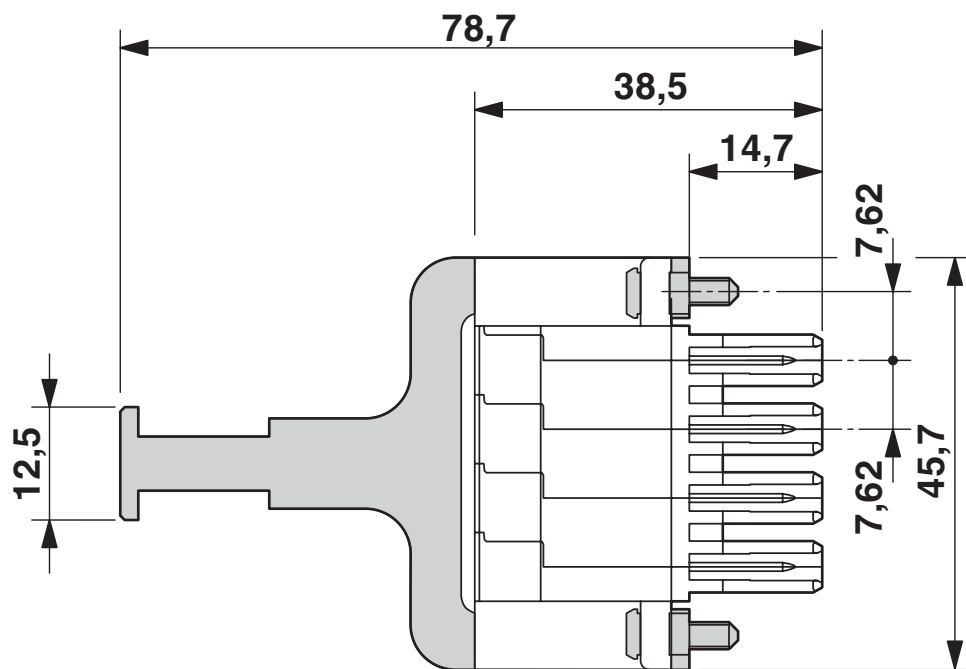
1704071

<https://www.phoenixcontact.com/us/products/1704071>



Drawings

Dimensional drawing



SPC 5/ 4-STF-SH-7,62 - PCB connector




1704071

<https://www.phoenixcontact.com/us/products/1704071>

Approvals

To download certificates, visit the product detail page: <https://www.phoenixcontact.com/us/products/1704071>

| | | | | |
|---|-----------------------|-----------------------|-------------------|-----------------------------|
| <div> cULus Recognized Approval ID: E60425-19920722</div> | | | | |
| | Nominal voltage U_N | Nominal current I_N | Cross section AWG | Cross section mm^2 |
| Use group B | 600 V | 35 A | 24 - 8 | - |
| | | | | |
| Use group C | 600 V | 35 A | 24 - 8 | - |
| | | | | |

SPC 5/ 4-STF-SH-7,62 - PCB connector



1704071

<https://www.phoenixcontact.com/us/products/1704071>

Classifications

ECLASS

| | |
|-------------|----------|
| ECLASS-13.0 | 27460202 |
|-------------|----------|

ETIM

| | |
|----------|----------|
| ETIM 9.0 | EC002638 |
|----------|----------|

UNSPSC

| | |
|-------------|----------|
| UNSPSC 21.0 | 39121400 |
|-------------|----------|

SPC 5/ 4-STF-SH-7,62 - PCB connector



1704071

<https://www.phoenixcontact.com/us/products/1704071>

Environmental product compliance

EU RoHS

| | |
|---|--------------------|
| Fulfills EU RoHS substance requirements | Yes, No exemptions |
|---|--------------------|

China RoHS

| | |
|--|--|
| Environment friendly use period (EFUP) | EFUP-E |
| | No hazardous substances above the limits |

EU REACH SVHC

| | |
|-------------------------------------|----------------------------|
| REACH candidate substance (CAS No.) | No substance above 0.1 wt% |
|-------------------------------------|----------------------------|

Phoenix Contact 2025 © - all rights reserved
<https://www.phoenixcontact.com>

Phoenix Contact USA
586 Fulling Mill Road
Middletown, PA 17057, United States
(+717) 944-1300
info@phoenixcon.com