

# RC-17S1N12K0X7 - Cable connector



1601989

<https://www.phoenixcontact.com/us/products/1601989>

Please be informed that the data shown in this PDF document is generated from our online catalog. Please find the complete data in the user documentation. Our general terms of use for downloads are valid.



M23, Cable connector, series: RC, straight plastic-sheathed, shielded: yes, Screw locking mechanism, No. of pos.: 17, Direction of rotation: Standard, contact connection type: Socket, Solder cup, cable diameter range: 4.5 mm ... 5.5 mm, coding: N

## Commercial data

|                                      |                                |
|--------------------------------------|--------------------------------|
| Item number                          | 1601989                        |
| Packing unit                         | 20 pc                          |
| Minimum order quantity               | 1 pc                           |
| Note                                 | Made to order (non-returnable) |
| Product key                          | ABRAFA                         |
| GTIN                                 | 4046356237598                  |
| Weight per piece (including packing) | 43.83 g                        |
| Weight per piece (excluding packing) | 43.83 g                        |
| Country of origin                    | DE                             |

# RC-17S1N12K0X7 - Cable connector



1601989

<https://www.phoenixcontact.com/us/products/1601989>

## Technical data

### Product properties

|              |                                 |
|--------------|---------------------------------|
| Product type | Circular connector (cable-side) |
|--------------|---------------------------------|

### Connector

#### Insulating body

|  |   |
|--|---|
| Coding   | N                                       |
| Contact material                                       | CuZn                                    |
| Contact surface material                               | Ni/Au                                   |
| Insertion/withdrawal cycles                            | 50                                      |
| Connection method                                      | Solder cup                              |
| Contact switching type                                 | Socket                                  |
| Application  | Signal                                  |
| Number of positions                                    | 17                                      |
| Direction of rotation                                  | Standard                                |
| Connection profile                                     | 17                                      |
| Number Contact (Contact group 1)                       | 17                                      |
| Diameter Contact (Contact group 1)                     | 1 mm                                    |
| Litz wire cross-section min. Contact (Contact group 1) | 0.08 mm <sup>2</sup>                    |
| Litz wire cross-section max. Contact (Contact group 1) | 1 mm <sup>2</sup>                       |
| Rated current Contact (Contact group 1)                | 8 A (for max. connection cross section) |
| Rated voltage Contact (Contact group 1)                | 48 V AC                                 |
|  | 74 V DC                                 |
| Rated surge voltage                                    | 1.5 kV                                  |
| Overvoltage category                                   | III                                     |
| Degree of pollution                                    | 3                                       |

#### Housing

|                                   |                         |
|-----------------------------------|-------------------------|
| Thread type                       | M23                     |
| Type of locking                   | Screw locking mechanism |
| Pg screw connection               | none                    |
| Housing material                  | GD-Zn                   |
| Degree of protection (plugged in) | IP67                    |

#### Seal

|                         |                   |
|-------------------------|-------------------|
| External cable diameter | 4.5 mm ... 5.5 mm |
|-------------------------|-------------------|

# RC-17S1N12K0X7 - Cable connector

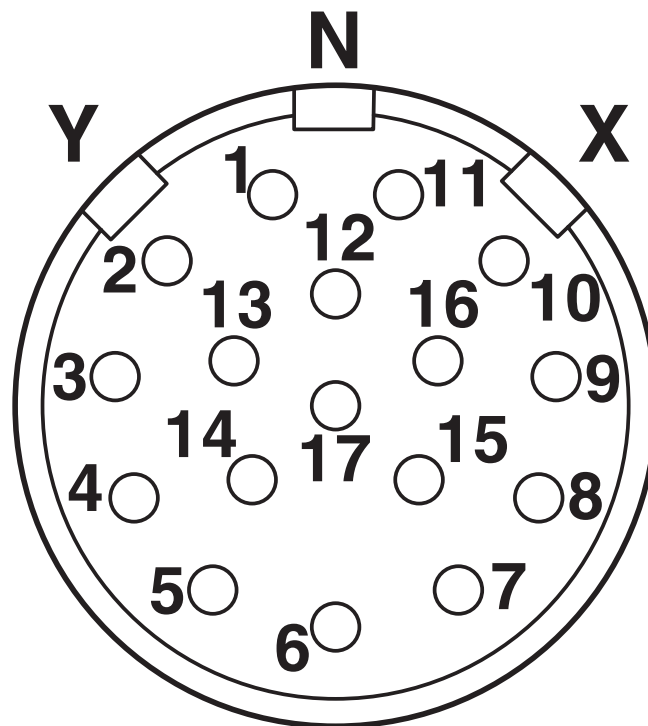
1601989

<https://www.phoenixcontact.com/us/products/1601989>



## Drawings

Schematic diagram



Connector pin assignment

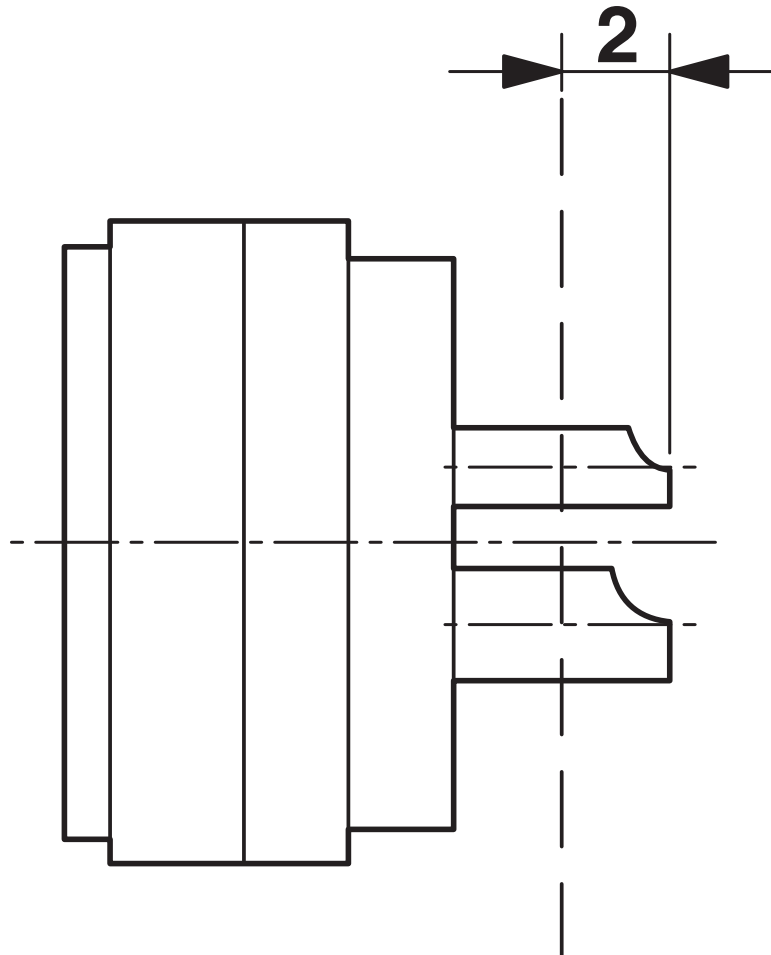
# RC-17S1N12K0X7 - Cable connector



1601989

<https://www.phoenixcontact.com/us/products/1601989>

Schematic diagram



Dimensional drawing

Phoenix Contact 2025 © - all rights reserved  
<https://www.phoenixcontact.com>

Phoenix Contact USA  
586 Fulling Mill Road  
Middletown, PA 17057, United States  
(+717) 944-1300  
[info@phoenixcon.com](mailto:info@phoenixcon.com)