

RC-16S1N124100 - Device connector rear mounting



1600857

<https://www.phoenixcontact.com/us/products/1600857>

Please be informed that the data shown in this PDF document is generated from our online catalog. Please find the complete data in the user documentation. Our general terms of use for downloads are valid.



M23, Device connector rear mounting, series: RC, straight, Screw locking mechanism, No. of pos.: 16, Direction of rotation: Standard, contact connection type: Socket, Solder cup, Flat gasket, Panel thickness min.: 2.7 mm, Panel thickness max.: 3.5 mm, coding: N, this item is expected to be lead-free from Q4 2025 in accordance with RoHS II without exception 6c (Pb < 0.1%), a lead-free alternative is possible on request in advance

Commercial data

Item number	1600857
Packing unit	40 pc
Minimum order quantity	1 pc
Product key	ABRAFR
GTIN	4046356232128
Weight per piece (including packing)	33.705 g
Weight per piece (excluding packing)	31.661 g
Country of origin	DE

RC-16S1N124100 - Device connector rear mounting



1600857

<https://www.phoenixcontact.com/us/products/1600857>

Technical data

Product properties

Product type	Circular connectors (device side)
--------------	-----------------------------------

Material specifications

Flammability rating according to UL 94	V0
--	----

Connection data

Conductor connection

Connection method	Solder connection
-------------------	-------------------

Connector

Insulating body

Coding	N
Contact material	CuZn
Contact surface material	Ni/Au
Insertion/withdrawal cycles	50
Connection method	Solder cup
Contact switching type	Socket
Application	Signal
Number of positions	16
Direction of rotation	Standard
Connection profile	16
Number Contact (Contact group 1)	16
Diameter Contact (Contact group 1)	1 mm
Litz wire cross-section min. Contact (Contact group 1)	0.08 mm ²
Litz wire cross-section max. Contact (Contact group 1)	1 mm ²
Rated current Contact (Contact group 1)	8 A (for max. connection cross section)
Rated voltage Contact (Contact group 1)	48 V AC
	74 V DC
Rated surge voltage	1.5 kV
Overvoltage category	III
Degree of pollution	3

Housing

Thread type	M23
Type of locking	Screw locking mechanism
Pg screw connection	none
Housing material	Metal
Degree of protection (plugged in)	IP67

Environmental and real-life conditions

RC-16S1N124100 - Device connector rear mounting



1600857

<https://www.phoenixcontact.com/us/products/1600857>

Ambient conditions

Degree of protection	IP67
----------------------	------

RC-16S1N124100 - Device connector rear mounting

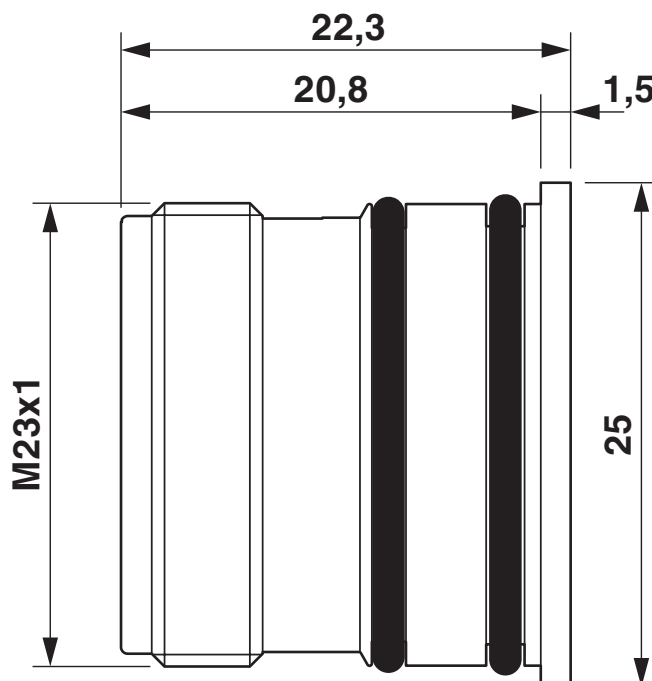
1600857

<https://www.phoenixcontact.com/us/products/1600857>



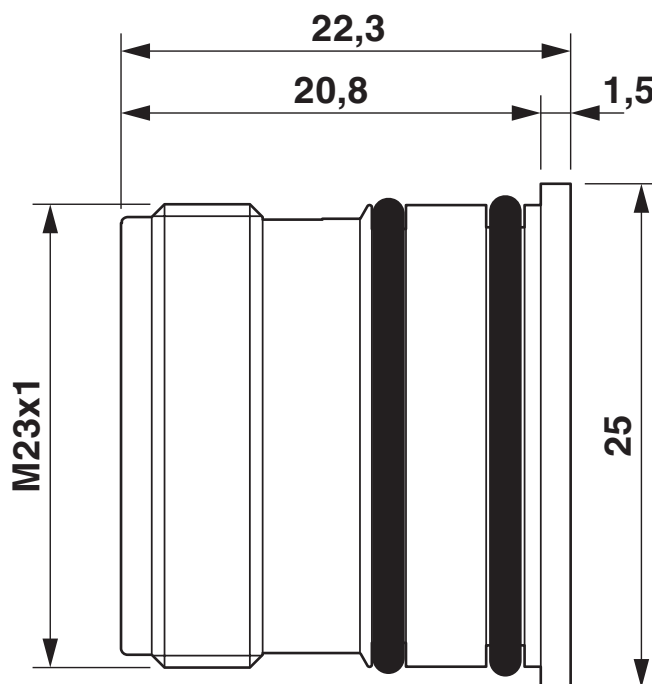
Drawings

Dimensional drawing



Dimensional drawing

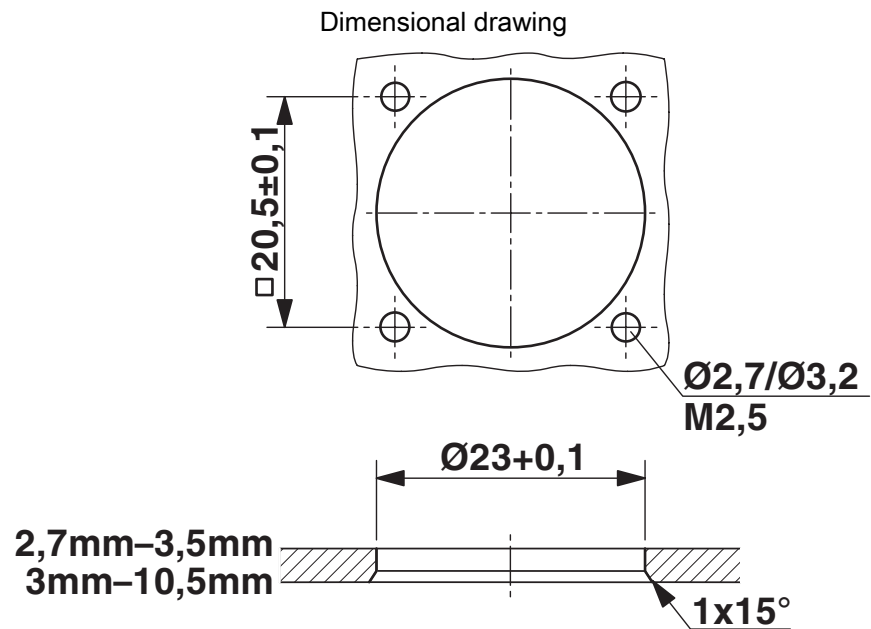
Dimensional drawing



Dimensional drawing

1600857

<https://www.phoenixcontact.com/us/products/1600857>

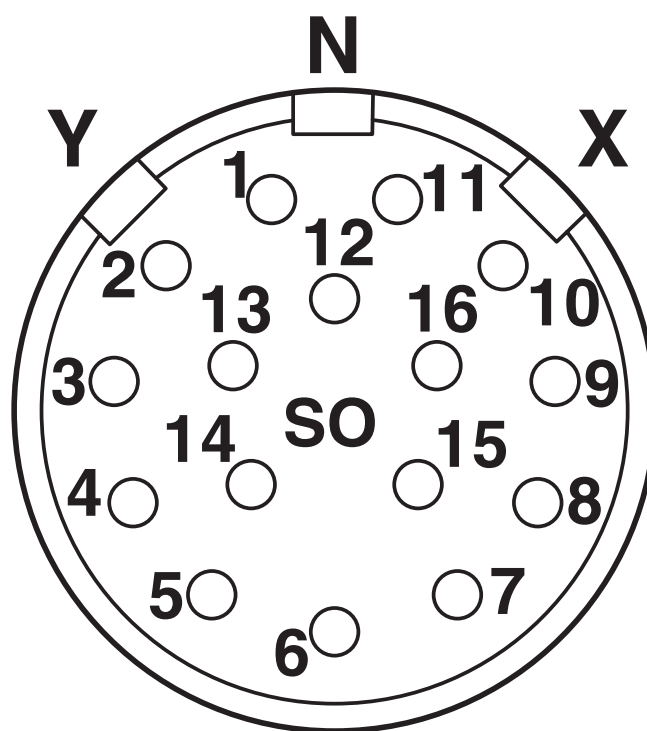


Installation dimensions

1600857

<https://www.phoenixcontact.com/us/products/1600857>

Schematic diagram

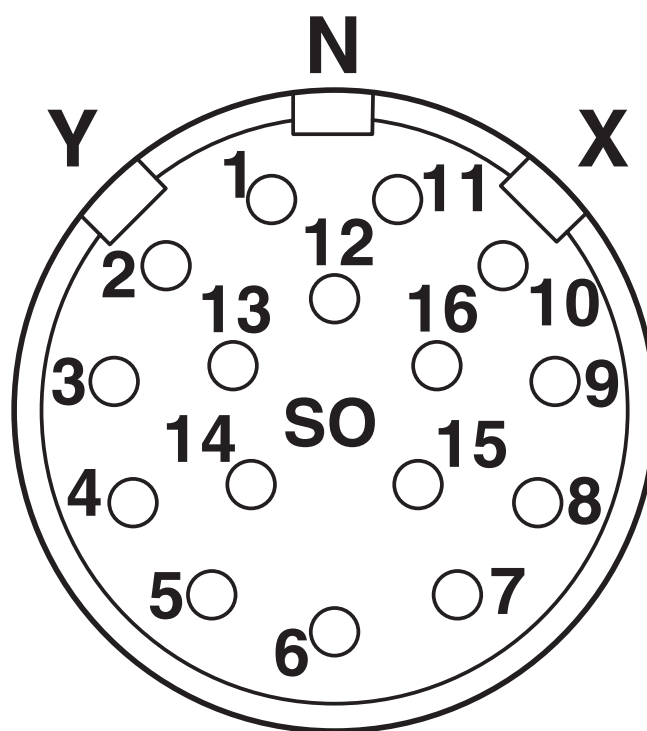


Connector pin assignment

1600857

<https://www.phoenixcontact.com/us/products/1600857>

Schematic diagram

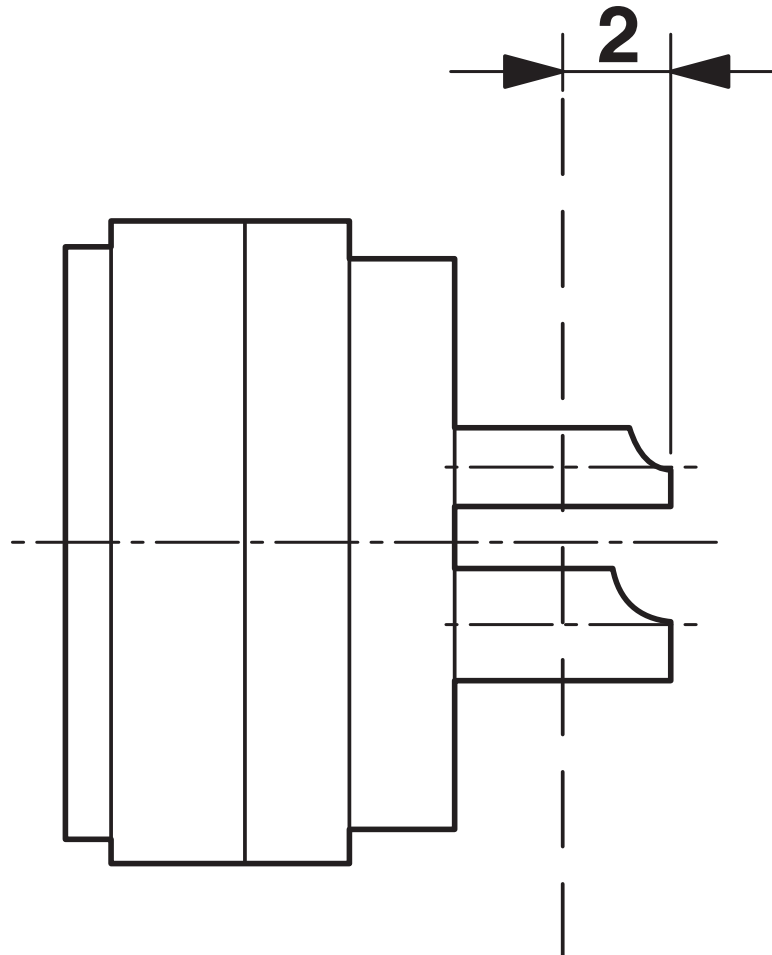


Connector pin assignment

1600857

<https://www.phoenixcontact.com/us/products/1600857>

Schematic diagram



Dimensional drawing

RC-16S1N124100 - Device connector rear mounting



1600857

<https://www.phoenixcontact.com/us/products/1600857>

Classifications

ECLASS

ECLASS-13.0	27440109
-------------	----------

ETIM

ETIM 9.0	EC003569
----------	----------

UNSPSC

UNSPSC 21.0	39121400
-------------	----------

1600857

<https://www.phoenixcontact.com/us/products/1600857>

Environmental product compliance

EU RoHS

Fulfills EU RoHS substance requirements	Yes
Exemption	6(c)

China RoHS

Environment friendly use period (EFUP)	EFUP-50
	An article-related China RoHS declaration table can be found in the download area for the respective article under "Manufacturer declaration". For all articles with EFUP-E, no China RoHS declaration table issued and required.

EU REACH SVHC

REACH candidate substance (CAS No.)	Lead(CAS: 7439-92-1)
SCIP	73d34831-6196-4302-bf6b-20cbf3f3c67f

Phoenix Contact 2025 © - all rights reserved

<https://www.phoenixcontact.com>

Phoenix Contact USA
586 Fulling Mill Road
Middletown, PA 17057, United States
(+717) 944-1300
info@phoenixcon.com