

# RC-12P1N12C0B7 - Rear panel feed-through



1597156

<https://www.phoenixcontact.com/us/products/1597156>

Please be informed that the data shown in this PDF document is generated from our online catalog. Please find the complete data in the user documentation. Our general terms of use for downloads are valid.



M23, Rear panel feed-through, series: RC, straight, shielded: yes, Screw locking mechanism, No. of pos.: 12, Direction of rotation: Standard, contact connection type: Pin, Solder cup, Flat gasket, Panel thickness max.: 2.5 mm, cable diameter range: 7.5 mm ... 9.5 mm, coding: N, Alternative product in accordance with RoHS II without Exemption 6c (Pb < 0.1 %) item no.: 1240807

## Commercial data

|                                      |                                |
|--------------------------------------|--------------------------------|
| Item number                          | 1597156                        |
| Packing unit                         | 20 pc                          |
| Minimum order quantity               | 1 pc                           |
| Note                                 | Made to order (non-returnable) |
| Product key                          | ABRAFJ                         |
| GTIN                                 | 4046356214612                  |
| Weight per piece (including packing) | 95.19 g                        |
| Weight per piece (excluding packing) | 95.19 g                        |
| Country of origin                    | DE                             |

# RC-12P1N12C0B7 - Rear panel feed-through



1597156

<https://www.phoenixcontact.com/us/products/1597156>

## Technical data

### Product properties

|              |                                 |
|--------------|---------------------------------|
| Product type | Circular connector (cable-side) |
|--------------|---------------------------------|

### Connector

#### Insulating body

|  |   |
|--|---|
| Coding   | N                                       |
| Contact material                                       | CuZn                                    |
| Contact surface material                               | Ni/Au                                   |
| Insertion/withdrawal cycles                            | 100                                     |
| Connection method                                      | Solder cup                              |
| Contact switching type                                 | Pin                                     |
| Application  | Signal                                  |
| Number of positions                                    | 12                                      |
| Direction of rotation                                  | Standard                                |
| Connection profile                                     | 12                                      |
| Number Contact (Contact group 1)                       | 12                                      |
| Diameter Contact (Contact group 1)                     | 1 mm                                    |
| Litz wire cross-section min. Contact (Contact group 1) | 0.08 mm <sup>2</sup>                    |
| Litz wire cross-section max. Contact (Contact group 1) | 1 mm <sup>2</sup>                       |
| Rated current Contact (Contact group 1)                | 8 A (for max. connection cross section) |
| Rated voltage Contact (Contact group 1)                | 48 V AC                                 |
|  | 74 V DC                                 |
| Rated surge voltage                                    | 1.5 kV                                  |
| Overvoltage category                                   | III                                     |
| Degree of pollution                                    | 3                                       |

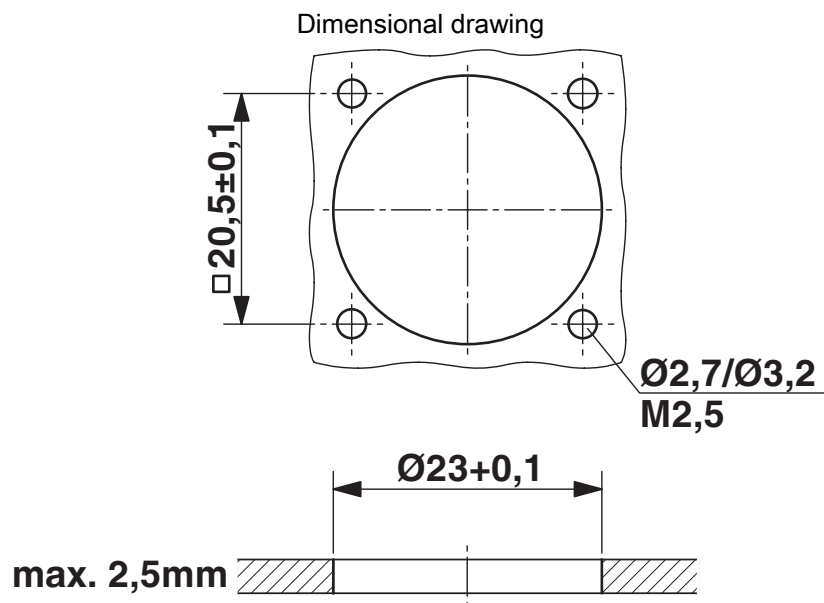
#### Housing

|                                   |                         |
|-----------------------------------|-------------------------|
| Thread type                       | M23                     |
| Type of locking                   | Screw locking mechanism |
| Pg screw connection               | none                    |
| Housing material                  | GD-Zn                   |
| Degree of protection (plugged in) | IP67                    |

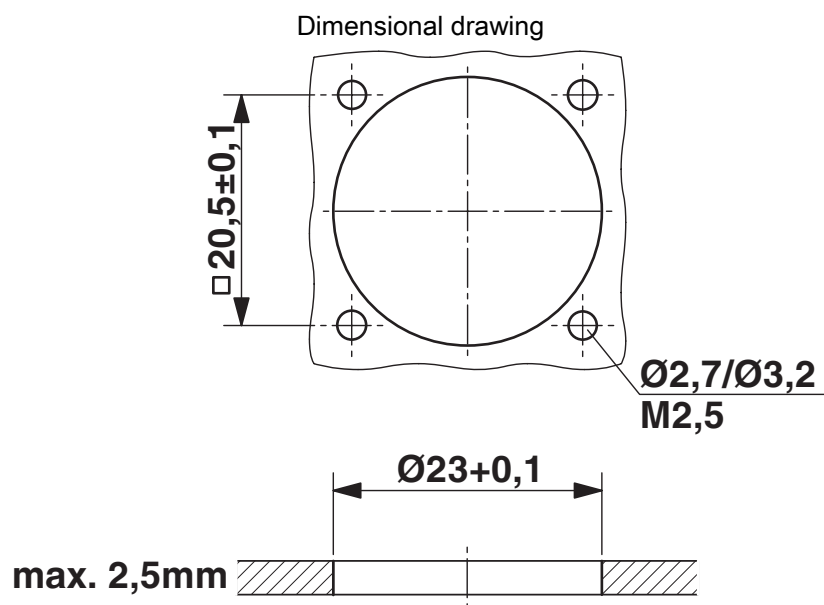
#### Seal

|                         |                   |
|-------------------------|-------------------|
| External cable diameter | 7.5 mm ... 9.5 mm |
| Seal material           | NBR               |

## Drawings



## Installation dimensions



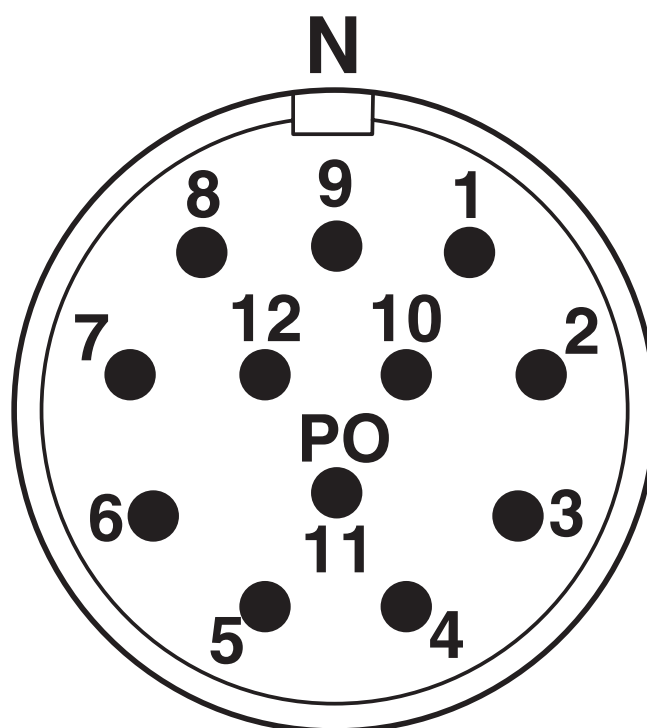
## Installation dimensions

# RC-12P1N12C0B7 - Rear panel feed-through

1597156

<https://www.phoenixcontact.com/us/products/1597156>

Schematic diagram



Connector pin assignment

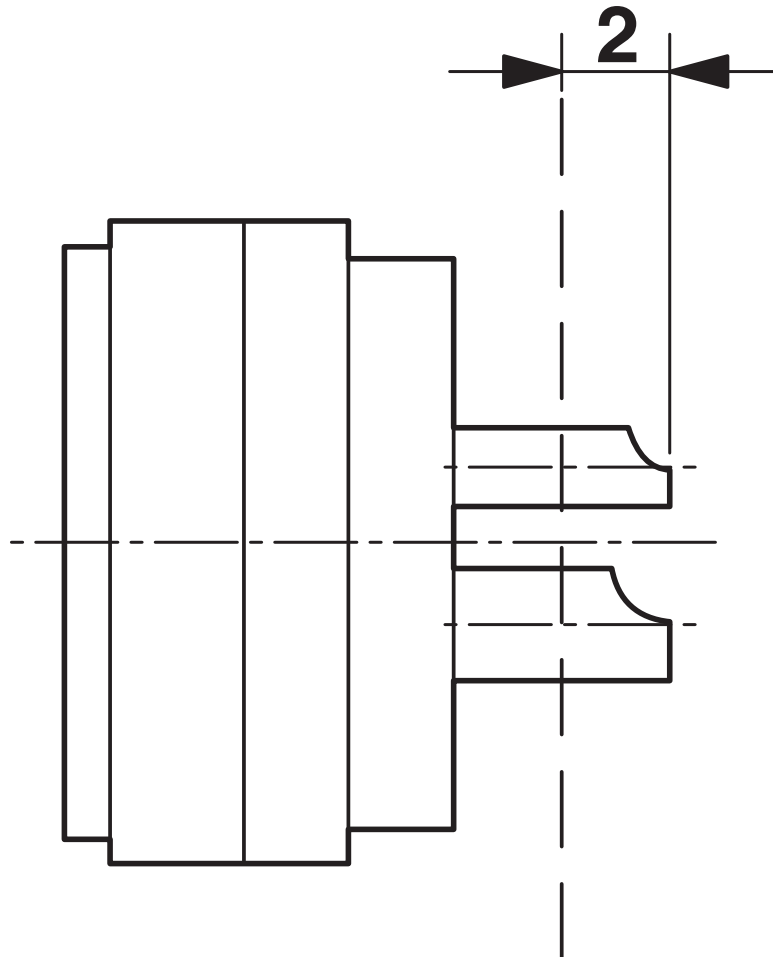
# RC-12P1N12C0B7 - Rear panel feed-through



1597156

<https://www.phoenixcontact.com/us/products/1597156>

Schematic diagram



Dimensional drawing

# RC-12P1N12C0B7 - Rear panel feed-through



1597156

<https://www.phoenixcontact.com/us/products/1597156>

## Classifications

### ECLASS

|             |          |
|-------------|----------|
| ECLASS-13.0 | 27440116 |
|-------------|----------|

### ETIM

|          |          |
|----------|----------|
| ETIM 8.0 | EC002635 |
|----------|----------|

### UNSPSC

|             |          |
|-------------|----------|
| UNSPSC 21.0 | 39121400 |
|-------------|----------|

# RC-12P1N12C0B7 - Rear panel feed-through



1597156

<https://www.phoenixcontact.com/us/products/1597156>

## Environmental product compliance

### EU RoHS

|   |      |
|---|------|
| Fulfills EU RoHS substance requirements | Yes  |
| Exemption                               | 6(c) |

### China RoHS

|  |   |
|--|---|
| Environment friendly use period (EFUP) | EFUP-50   |
|  | An article-related China RoHS declaration table can be found in the download area for the respective article under "Manufacturer declaration". For all articles with EFUP-E, no China RoHS declaration table issued and required. |

### EU REACH SVHC

|                                     |                                      |
|-------------------------------------|--------------------------------------|
| REACH candidate substance (CAS No.) | Lead(CAS: 7439-92-1)                 |
| SCIP                                | c193a052-b2a3-4d2c-8c6b-2fafab6e9581 |

Phoenix Contact 2025 © - all rights reserved

<https://www.phoenixcontact.com>

Phoenix Contact USA  
586 Fulling Mill Road  
Middletown, PA 17057, United States  
(+717) 944-1300  
[info@phoenixcon.com](mailto:info@phoenixcon.com)