

# RC-12P1N128004 - Cable connector



1596967

<https://www.phoenixcontact.com/us/products/1596967>

Please be informed that the data shown in this PDF document is generated from our online catalog. Please find the complete data in the user documentation. Our general terms of use for downloads are valid.



M23, Cable connector, straight, Screw locking mechanism, No. of pos.: 12, Direction of rotation: Standard, contact connection type: Pin, Solder cup, cable diameter range: 7.5 mm ... 9.5 mm, coding: N

## Commercial data

Item number	1596967
Packing unit	20 pc
Minimum order quantity	1 pc
Note	Made to order (non-returnable)
Product key	ABRAFA
GTIN	4046356378833
Weight per piece (including packing)	76.695 g
Weight per piece (excluding packing)	72.9 g
Country of origin	DE

# RC-12P1N128004 - Cable connector

1596967

<https://www.phoenixcontact.com/us/products/1596967>



## Technical data

### Product properties

Product type	Circular connector (cable-side)
--------------	---------------------------------

### Connector

#### Insulating body

Coding	N
Contact material	CuZn
Contact surface material	Ni/Au
Insertion/withdrawal cycles	100
Connection method	Solder cup
Contact switching type	Pin
Application	Signal
Number of positions	12
Direction of rotation	Standard
Connection profile	12
Number Contact (Contact group 1)	12
Diameter Contact (Contact group 1)	1 mm
Litz wire cross-section min. Contact (Contact group 1)	0.08 mm <sup>2</sup>
Litz wire cross-section max. Contact (Contact group 1)	1 mm <sup>2</sup>
Rated current Contact (Contact group 1)	8 A (for max. connection cross section)
Rated voltage Contact (Contact group 1)	48 V AC
	74 V DC
Rated surge voltage	1.5 kV
Overvoltage category	III
Degree of pollution	3

#### Housing

Note	Order contact inserts separately
Thread type	M23
Type of locking	Screw locking mechanism
Pg screw connection	none
Housing material	Metal
Degree of protection (plugged in)	IP65
	IP67
	IP68

#### Seal

External cable diameter	7.5 mm ... 9.5 mm
-------------------------	-------------------

# RC-12P1N128004 - Cable connector

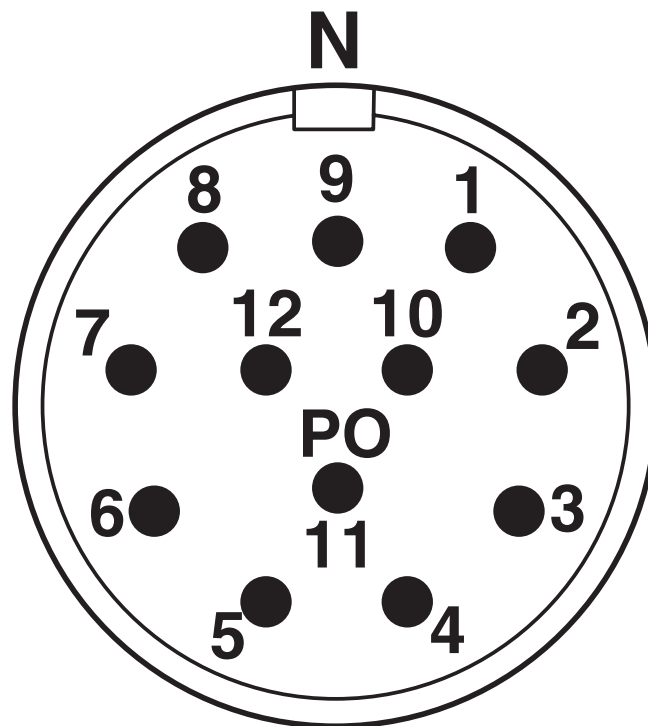
1596967

<https://www.phoenixcontact.com/us/products/1596967>



## Drawings

Schematic diagram



Connector pin assignment

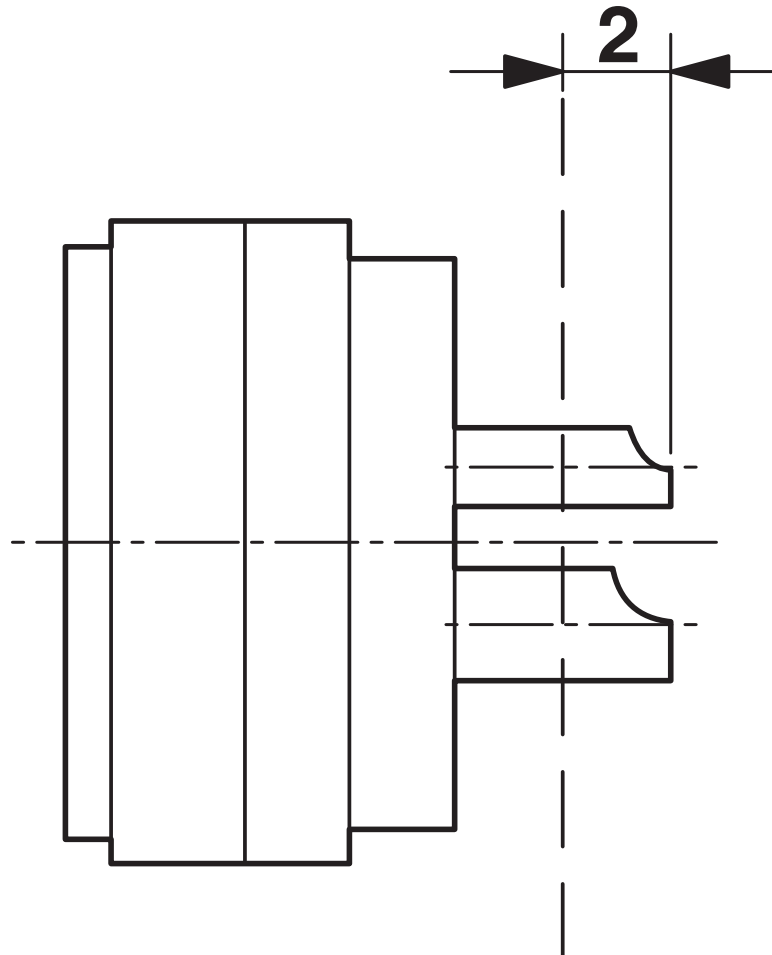
# RC-12P1N128004 - Cable connector



1596967

<https://www.phoenixcontact.com/us/products/1596967>

Schematic diagram



Dimensional drawing

Phoenix Contact 2025 © - all rights reserved  
<https://www.phoenixcontact.com>

Phoenix Contact USA  
586 Fulling Mill Road  
Middletown, PA 17057, United States  
(+717) 944-1300  
[info@phoenixcon.com](mailto:info@phoenixcon.com)